



The Small Cruise
Ship Collection

www.small-cruise-ships.com



small-cruise-ships.com

info@small-cruise-ships.com

FRONTIER LANDS OF PAPUA NEW GUINEA CRUISE

Frontier lands where over 700 languages flourish amongst 5 million people. Ancient cultures remain unchanged for centuries in this remarkably diverse nation.



ITINERARY

DAY 1: DEPART CAIRNS

Arrive at Trinity Wharf (berth to be advised) for boarding at 7:30am for a 9:00am departure. Join our expedition staff as they introduce you to the journey and the many experiences you will enjoy. This evening, join the Captain's welcome drinks and meet your crew and fellow guests as the sun sets.

At Sea

Spend today relaxing onboard, listen and learn from our Guest Lecturer presentations, or enjoy an engine room or bridge tour.

Samarai Island

The Small Cruise
Ship Collection

www.small-cruise-ships.com

01432 507 280 (within UK)

info@small-cruise-ships.com | small-cruise-ships.com



The Small Cruise Ship Collection

www.small-cruise-ships.com



small-cruise-ships.com

info@small-cruise-ships.com

Clear into Papua New Guinea at this historic former administrative capital, once the second largest settlement after Port Moresby. Choose to explore colonial Samarai and purchase pearls or snorkel at nearby Ebuma Island.

[Dobu Island & Dei Dei Springs](#)

Walk to the mythical Dei Dei Hot Springs, where locals share spiritual tales and still cook food in palm frond baskets. Learn about the ancient Kula Ring trading network at Dobu Island and snorkel the bubbling springs reef.

[Kuiawa Island | Trobriand Islands](#)

Visit the famous 'Islands of Love' where Trobriand Islanders employ traditional magic to grow better produce. Witness cultural performances, browse local markets and swim off pristine beaches in this Polynesian-influenced community.

[Tufi Fjord](#)

Explore the spectacular fjords of Cape Nelson, famous for tapa cloth production. Enjoy cultural demonstrations, nature walks, and world-class snorkelling and diving amongst uncharted reefs in this dramatic landscape.

[Buna & Sanananda](#)

Pay tribute at these significant WWII battlefields where fierce fighting occurred between Australian, American and Japanese forces. Visit the village-built War Museum and experience traditional welcomes honouring all sides.

[Dregerhafen, Morobe](#)

Experience a high-spirited welcome at Gingala Village and browse the markets, famous for their traditional Tami bowls and timber paddles. Enjoy water activities in pristine lagoons

surrounded by the stunning coastline of the Finschhafen district.

[Madang](#)

Discover Madang, the capital of Madang Province, named during the late German administration in the 1890s. Visit Bilbil village for traditional clay pot demonstrations and the Coast Watchers monument, then spend the afternoon diving, relaxing at the waterside Madang Resort, or browsing the town's vibrant markets.

[Sepik River](#)

Navigate Papua New Guinea's longest river, renowned as one of the world's most prolific art-producing regions. Visit Bien village to meet master carvers, enjoy traditional performances, and cruise by Xplorer to spot a diverse array of wildlife.

[At Sea](#)

Sail towards New Britain while enjoying presentations about the remarkable coral reef systems ahead. Reflect on the incredible cultural connections you've made throughout Papua New Guinea's diverse frontier regions.

[Kimbe Bay](#)

Explore the 'coral crucible' with over 860 tropical fish species and 400 coral varieties. Join traditional sing-sings at the Catholic Mission before swimming, snorkelling and diving at the spectacular Witu Islands.

[Day 13: Arrive Rabaul](#)

Disembark at 8:00am in this dramatic volcanic harbour town. For those wanting to explore more, consider adding on our Beyond Frontiers of Papua New Guinea voyage or join the included post-cruise charter flight back to Cairns.



The Small Cruise Ship Collection

www.small-cruise-ships.com

01432 507 280 (within UK)

info@small-cruise-ships.com | small-cruise-ships.com



The Small Cruise Ship Collection

www.small-cruise-ships.com



small-cruise-ships.com

info@small-cruise-ships.com

Please note:

Embrace the unexpected - it's part of the adventure. This itinerary is a guide. We adjust plans based on weather, tides, wildlife, and opportunities we encounter. Remote communities may be unavailable due to local customs. Flexibility makes expeditions special.



The Small Cruise
Ship Collection

www.small-cruise-ships.com

01432 507 280 (within UK)

info@small-cruise-ships.com | small-cruise-ships.com



The Small Cruise
Ship Collection

www.small-cruise-ships.com



small-cruise-ships.com

info@small-cruise-ships.com

YOUR SHIP: CORAL ADVENTURER

YOUR SHIP: Coral Adventurer

VESSEL TYPE:

LENGTH:

PASSENGER CAPACITY:

BUILT/REFURBISHED:

Launched in 2018 with her maiden voyage in 2019, Coral Adventurer has been designed and built to take you closer to unspoilt vistas in comfort, style and safety. A culmination of two years of design and three decades of passion for expedition cruising. BIGGER IS NOT BETTER At a time when cruise ships get larger and glitzier, we remain stubbornly compact and intimate. Our ships are designed to take you to unspoilt destinations not accessible to large ships. We want you to have the luxury of space, dine with whom you please, or find your quiet corner on deck. So Coral Adventurer has just 60 spacious cabins. This preserves the intimate atmosphere we are known for without sacrificing the stability and comfort of a true ocean going vessel. BUILT FOR DISCOVERY The Coral Adventurer features the trademark dual 'Xplorer' tenders cradled on a hydraulic platform slung off the back of the ship, enabling our guests to go ashore in comfort and ease. The shallow draft of the ship enables us to go closer to shore than larger ships. Together with a renowned expedition team, this new ship will offer the most advanced expedition capabilities of any small ship afloat. BUILT FOR COMFORT With active stabilisers dampening sea motion, mostly balcony cabins, and interiors designed with the colours and

textures of tropical Queensland, the Coral Adventurer is a comfortable ship. She features promenade decks, generous communal areas that accommodate all guests, a passenger elevator, and an open kitchen where you can observe our chefs whip up small batch cuisine from locally sourced ingredients. BUILT FOR PERSONAL SERVICE The Coral Adventurer will continue a proud tradition of Australian flagged vessels with friendly and professional Australian crew. The onboard atmosphere remains refreshingly informal and intimate. Take your seat at our bridge lounge, chat with the captain at your leisure or accompany our chefs on a market tour. Food and wine features Single seating dining area with communal 'wine table' finished with Australian stone; serving buffet breakfast and lunch, and multi-course table d'hote dinners Showcase galley visible to guests for fresh small-batch cuisine featuring Australian produce Multiple indoor and outdoor bars, including the Explorer bar on the sundeck for sunset drinks with 180 degree views Curated wine cellar featuring modestly priced boutique wines for daily drinking and exceptional vintage Australian reds. Guest comfort All outside guest cabins with en-suite bathrooms; majority have private balcony Active stabilisers to dampen sea motion Gym equipped with elliptical trainers and treadmills Passenger elevator Wi-Fi available in all

The Small Cruise
Ship Collection

www.small-cruise-ships.com

01432 507 280 (within UK)

info@small-cruise-ships.com | small-cruise-ships.com



The Small Cruise Ship Collection

www.small-cruise-ships.com



small-cruise-ships.com

info@small-cruise-ships.com



guest areas



01432 507 280 (within UK)

info@small-cruise-ships.com | small-cruise-ships.com



The Small Cruise Ship Collection

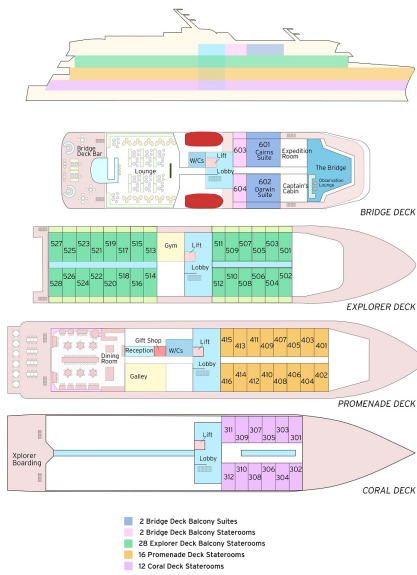
www.small-cruise-ships.com



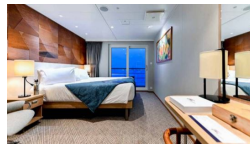
small-cruise-ships.com

info@small-cruise-ships.com

INSIDE YOUR SHIP



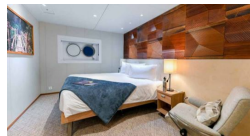
BRIDGE DECK BALCONY STATEROOM



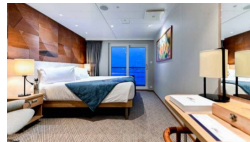
BRIDGE DECK BALCONY SUITE



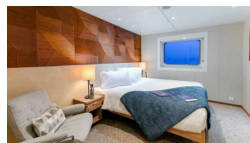
CORAL DECK STATEROOM



EXPLORER DECK BALCONY STATEROOM



PROMENADE DECK STATEROOM





The Small Cruise Ship Collection

www.small-cruise-ships.com



small-cruise-ships.com

info@small-cruise-ships.com

PRICING

16-Oct-2026 to 28-Oct-2026

BRIDGE DECK BALCONY STATEROOM	£11645 GBP pp
BRIDGE DECK BALCONY SUITE	£14795 GBP pp
CORAL DECK STATEROOM	£6975 GBP pp
PROMENADE DECK STATEROOM	£8235 GBP pp
EXPLORER DECK BALCONY STATEROOM	£10705 GBP pp

22-Sep-2027 to 04-Oct-2027

BRIDGE DECK BALCONY STATEROOM	£11475 GBP pp
BRIDGE DECK BALCONY SUITE	£15975 GBP pp
EXPLORER DECK BALCONY STATEROOM	£10475 GBP pp
PROMENADE DECK STATEROOM	£8475 GBP pp
CORAL DECK STATEROOM	£6975 GBP pp



The Small Cruise Ship Collection

www.small-cruise-ships.com

01432 507 280 (within UK)

info@small-cruise-ships.com | small-cruise-ships.com