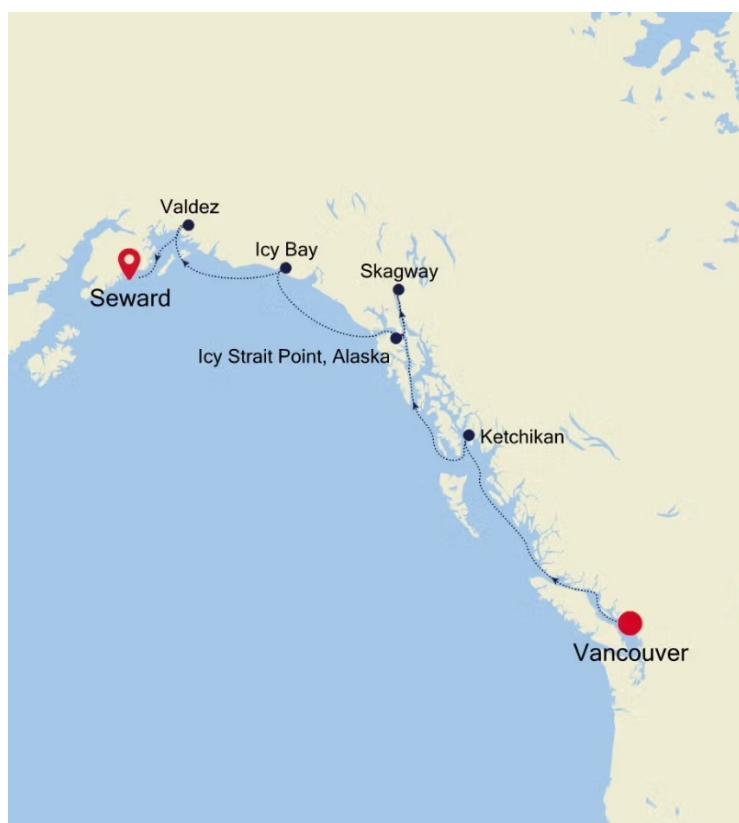




FROM VANCOUVER TO SEWARD - CRUISE TO THE HEART OF ALASKA IN LUXURY

This voyage takes you to the heart of Alaska going from the mountains of Vancouver to Seward's monumental scenery. Embark from Vancouver and sail to Ketchikan for an introduction to wild Alaska. Sail to see the majestic Mendenhall Glacier at Juneau, then spend time immersed in Skagway's wild remote beauty. You'll enjoy a stop in Sitka known for its bears and icy adventures, then a cruise around the majestic Hubbard Glacier awaits before arrival in Seward.



ITINERARY

DAY 0 Pre Cruise

Day 1 Vancouver

Boasting mountains, sea, culture, art and so much more, many



The Small Cruise Ship Collection

www.small-cruise-ships.com

small-cruise-ships.com

info@small-cruise-ships.com

cities claim to have it all, but few can back it up like Vancouver. Famously livable, just visiting this highrise city - surrounded by staggering natural beauty - is a thrill. Offering all of the creature comforts of an ultra-modern, worldly metropolis - even downtown has a hint of mountain-freshness to its air - and part of Vancouver's appeal is how easily you can swap the skyscrapers for whale-filled oceans and mountain-punctured skies. Head up to the Vancouver Lookout Tower for the ultimate 360-degree views of the city glistening, amid the beautiful embrace of the beckoning wilderness beyond. But what to see first? Art lovers might choose the Vancouver Art Gallery or the Contemporary Art Gallery. Nature lovers might rush for the ferry to visit Vancouver Island - where they can encounter grizzly bears, whales and orcas. Culture vultures, on the other hand, will probably head for the sights and sounds of Canada's biggest Chinatown. From steaming dim sum for lunch to Chinese apothecaries offering herbs to soothe any illness, it's all here thanks to the migrant workers of the 19th century. The one-of-a-kind treasure of Stanley Park brings wild wonder and natural beauty to this cosmopolitan city's doorstep, and the pine-tree clad park offers isolated trails and amazing views. Wander the Seawall that encircles it - a 20-mile coastal path, full of joggers, whizzing skaters and wandering couples. Grab a bike and cycle between Coal Harbour and Kitsilano Beach. You can top up your tan on the shore, as you soak in the glorious views of the mountains and cityscape from the sands.

Day 2 Cruise Inside Passage

Navigate through the intricate outlays of some of Alaska's most

staggering winter scenery, threading a needle between craggy, snow-dusted islands, and slipping glacial giants. To cruise this 500-mile stretch of Alaskan beauty is to sail through a living work of natural art - with perfectly sculpted mountains soaring from the shoreline, and clutches of islands scattered across the dark waters with delicate attention to detail. A common sailing route due to its calm sheltered waters, gorgeous natural set pieces constantly play out here - whether it's killer whales accompanying you through the breathtaking icy passages, harbour seals catching a break on floating hunks of ice, or wisps of cloud clinging to distant mountain peaks. Witness Mother Nature at her most dramatic and elaborate along this Alaskan coastline, where glaciers groan and creak melodramatically, before finally releasing colossal shelves of ice, allowing them to free fall into the waters below, and explode with angry booms and thunderous splashes. While fundamental displays of nature's power always awe and amaze, it's the tranquil beauty of this passage - amid still waters, splitting only to reveal the smooth backs of breaching humpback whales - that is relentlessly moving. A journey of glaciers, remote hidden villages, and carved fjords - the Inside Passage is a breathtaking voyage through the intricate mesh of Alaska's fractured, raw and spectacular coastal landscapes.

Day 3 Ketchikan, Alaska

The Salmon Capital of the World is a thrilling introduction to wild and wonderful Alaska, sitting at the southern gateway to the Inside Passage's famed route of larger than life scenery. Cruise through the waters, or soar just above in a sightseeing plane, to

The Small Cruise Ship Collection
www.small-cruise-ships.com

01432 507 280 (within UK)

info@small-cruise-ships.com | small-cruise-ships.com



The Small Cruise Ship Collection

www.small-cruise-ships.com

small-cruise-ships.com

info@small-cruise-ships.com

take in the full majesty of the magnificent Misty Fjords National Monument. Home to grizzly and black bears - as well as cruising whales and swimming seals - the wildlife spotting opportunities in this majestic corner of the world are nothing short of spectacular. Towered over by steep banks and valley walls, Ketchikan's ocean inlet is peppered with granite stacks, looming from the waters. Surrounded by glorious landscapes, head to the Alaska Rainforest Sanctuary, which is alive with bald eagles, black bears and remarkable, thick, yellow banana slugs - the squeamish are advised to keep well clear. Visit Ketchikan's Heritage Centre, where a collection of intricately carved totem poles rise up, preserving the heritage of the indigenous Tlingit and Haida people of these lands. Ketchikan has the world's largest collection, and some of the oldest and most precious totems in existence. This frontier city hasn't always been so wholesome, however. See the colourful historic street that is built on crooked stilts over Ketchikan Creek, which has a crude history as the main red-light district in the city. The brothels closed in the 1950s, but you can explore this legendarily seedy past at Dolly's House - a brothel turned museum. See the Married Man trail, a historical route used to enter Creek Street away from prying eyes.

Day 4 Juneau (Alaska)

Extraordinary adventures amid nature's wildest staging await at Juneau. The majestic Mendenhall Glacier sprawls down from Juneau Icefield, which provides an icy cap to the area's rip-roaring scenery. State capitals simply don't get more dramatic than this isolated, remote city lost amid the Alaskan

wilds. Even the roads eventually peter out, absorbed by forests and viewpoints, firmly underlining the isolated location, hidden behind an impenetrable wall of rigid mountains. Rise up to Mount Roberts Tramway's viewpoint, to see the city swallowed by this most colossal backdrop. This is glacier country, and no fewer than 38 ice flows branch off from the main Juneau Icefield, slowly carving out valleys in their wakes. Taku Glacier cuts deep into the mountain, forming a colossal sculpture that is one of the world's thickest - almost a mile deep. Mendenhall Glacier cascades down, just 12 miles away from downtown, terminating in its own lake and visitor centre. With 1,500 square miles of ice field to explore, one of the best ways to take in the magnitude and majesty of this epic ice sculpture is to hold on tight as the propeller whirs, and you soar into the skies on an exhilarating sightseeing flight. Cruising up above the icy world that fills in these serrated mountain peaks is a once in a lifetime experience. The animals that inhabit the Southeast Alaskan wilds are just as inspiring as the landscapes - families of bears patrol the riverbanks, bald eagles survey the surroundings watchfully, and Pacific humpbacks migrate from Hawaii's waters to feast on the krill rich, icy waters. Fish for huge catches, power across the ice in a snow-sledge, or kayak just below glaciers. However you choose to immerse yourself in it, Juneau's incredible outdoor adventures never disappoint.

Day 5 Skagway (Alaska)

Feel the same rush of excitement as the gold rush chasers did, when they first arrived in Skagway, intent on finding their fortune. While the gold may now be gone, a treasure trove of

The Small Cruise Ship Collection
www.small-cruise-ships.com

01432 507 280 (within UK)

info@small-cruise-ships.com | small-cruise-ships.com



The Small Cruise Ship Collection

www.small-cruise-ships.com

small-cruise-ships.com

info@small-cruise-ships.com

natural glory waits to be discovered here. The adrenaline of America's legendary gold rush still pulses along Skagway's streets, especially in Klondike Gold Rush National Historical Park and the historic downtown area - which sprang up during the heady heights of the 1890's goldrush. The jagged mountain ridges - with peaks of white snow above a treeline of soaring pine forests - provide a reward for the ages. Recapture the evocative sense of adventure, as you ride one of the world's most spectacular railroads. Your engine will puff steam below the precipitous, colossal scenery, while the vintage carriages curve around the White Pass & Yukon Route, alongside tumbling waterfalls and spanning deeply-etched gorges. Wander historic trails like the Chilkoot Trail Hike, to walk in the well-trodden footsteps of the gold seekers. Set on the northern tip of the Inside Passage, Skagway luxuriates in a remarkably beautiful and dramatic landscape. Explore mighty rivers teeming with thick salmon leaping over rapids and see brown bears edging from the shelter of the trees. Endless forests spread as far as the eye can see, while bald eagles perch on treetops, surveying the surroundings from above. Whales roam offshore, and glaciers creak and calve nearby, in this magical natural kingdom.

Day 6 Sitka (Alaska)

A distant land of bears, wild landscapes and icy adventures, sail between glorious islands and witness the diverse wildlife of the Inside Passage. Eagles watch over the scenery overhead, while whales and sea lions add glorious weight to the animal life that thrives and thrashes in these icy seas. With a quintet of Pacific

salmon species filling the rich rivers and waterways with life, settle back to enjoy the show, as Sitka's immense setpieces play out before you. You might notice the onion-shaped dome atop St. Michael's Church - a relic of the area's Russian history. Sitka formed a part of the Russian Empire until a deal was struck in 1867, and the territory was sold to the United States, with the handover ceremony taking place here in Sitka. The native Tlingit culture is an important presence, and elaborate totem poles rocket up in Sitka National Historical Park. They mark the battleground of 1804, when the indigenous people clashed fiercely with the Russians. The snow-capped peak of the dormant volcano, Mount Edgecumbe, draws understandable comparisons with Mount Fuji's symmetrical cone. Climb to thrilling heights, as you arrive on Kruzof Island, and enjoy richly spellbinding views of the scattered Pacific islands, while hiking. Whether you want to spend your time flying above snow-dusted mountain ridges, fishing for colossal King salmon, or savouring Northwest frontier cuisine in waterfront restaurants, there's no shortage of ways to experience Sitka's natural wonders.

Day 7 Cruise Hubbard Glacier, Alaska

Hubbard Glacier, off the coast of Yakutat, Alaska, is the largest glacier in North America, with a calving front that is more than six miles wide. One of the main sources for Hubbard Glacier originates 76 mi inland. It has been a very active glacier, experiencing two major surges in the past 30 years. This glacier was named after Gardiner Greene Hubbard, a U.S. lawyer, financier, and philanthropist. He was the first president of the National Geographic Society.

The Small Cruise Ship Collection
www.small-cruise-ships.com

01432 507 280 (within UK)

info@small-cruise-ships.com | small-cruise-ships.com



Day 8 Seward (Anchorage, Alaska)

Monumental scenery surrounds you in this remote corner of the world, where glaciers calve and whales cruise through inky waters, before an immense mountain backdrop. Almost totally submerged by the colossal landscapes around it, Seward - and the wonders of Kenai Fjords National Park - offer some of astonishing Alaska's most thrilling scenery. Located in a deep gash in the Kenai Peninsula, Seward is a place to immerse yourself in nature's majesty. Fjords carve into the landscape, while the Harding Icefield - which caps Kenai Fjords National Park - reaches out its icy fingers, with glaciers spilling down between mountain peaks. Head to Holgate Glacier, to come face to face with a breathtaking stack of intense blue and white ice. Get up close in a kayak or boat ride, to slalom through the discarded confetti of ice chunks, and perhaps even witness the powerful spectacle of an ice ledge creaking and groaning, before plunging to the waters below. The city of Anchorage is easily within reach from here, offering an incongruous contrast to the wild wonders of Alaska. A place where deep-sea fishermen bump shoulders with businesspeople on the 9-5, it's a fascinating, remote city. Home to almost half of the Alaskan population, Anchorage and its humble skyline is dwarfed by the snowy peaks of the wilderness beyond. Don't miss the opportunity to immerse yourself in the unique culture, traditions and heritage of the First Nation people of these lands too.

Please note:

Itineraries are subject to change.



The Small Cruise Ship Collection

www.small-cruise-ships.com

small-cruise-ships.com

info@small-cruise-ships.com

YOUR SHIP: SILVER MOON

YOUR SHIP:	Silver Moon
VESSEL TYPE:	Luxury Cruise
LENGTH:	698 Feet / 212.8 Metres
PASSENGER CAPACITY:	596
BUILT/REFURBISHED:	2020

Built by cruise lovers, for cruise lovers, Silver Moon is the epitome of 21st-century luxury travel. Building on the phenomenal success of Silver Muse, Silver Moon mirrors her sister ship and establishes a new era of Silversea. At 40,700 gross tons and with a capacity to accommodate 596 passengers on board, Silver Moon maintains the small-ship intimacy and spacious all-suite accommodation, which are the hallmarks of the Silversea experience. Silver Moon also features the all-new Sea And Land Taste (S.A.L.T.) programme - an immersive culinary concept that enables guests to travel deeper through a range of destination-based gastronomic experiences. Get ready for a new world of travel. DINING S.A.L.T. Kitchen Take your travel experience further than ever before in the S.A.L.T. Kitchen. Silver Moon's exclusive destination focused restaurant is the place to be when it comes to enjoying the local cuisine, culture and rich culinary heritage of your voyage. Taste your way through regional specialities for your most immersive travel experience ever. Whether you are looking for excellent food and wine, a social meal with friends or a deeper understanding of your region's culture, expect to find it in the S.A.L.T. Kitchen. La Dame Silversea's signature French restaurant, La Dame is the

epitome of fine dining. Featuring the rich, smooth flavours of France, La Dame's reputation for gastronomic excellence is fully upheld aboard Silver Moon. Expect only the very best; chic contemporary style, vast ocean-view windows, crisp white table linens and impeccable white-gloved silver service with a smile. Decorated with custom-made interior panel compositions created by Lalique, there is no better place to feel the culinary soul of France than in La Dame. The Grill Silversea's much-loved casual dining restaurants serves a delectable range of burgers and salads by day, and turns into our famous Hot Rocks table BBQ concept by night. The Grill is quite simply, the best place to eat between sea and sky. If you like flavour some meals cooked to perfection, a casual laid back atmosphere and OMG views, then The Grill is the answer to your prayers. Atlantide Instantly recalling images of the sea in all her watery majesty, the Atlantides are the seven nymph daughters of Atlas. Creative muses, known for their wisdom and beauty, the sisters were granted immortality in the form of stars and can be seen today in the constellation of Taurus. Pivotal to Silver Moon dining experience, this elegant bar and grill incorporates the best that the sea has to offer. Created to temper your taste buds, designer dishes such as royal crab, blue lobster and Verbena infused red snapper in a sea salt crust are showcased alongside the best steaks offshore. La Terrazza La Terrazza is a celebration of the way Italians eat today, an ode to the delicious evolution of the world's most beloved cuisine. Evolving one of Silversea's signature restaurants, La Terrazza serves fresh twists on great classics, and also explores the new heroes of Italian cuisine. The notion of comfort traditionally associated with Italian cuisine is



The Small Cruise Ship Collection

www.small-cruise-ships.com

small-cruise-ships.com

info@small-cruise-ships.com

present in every dish, every bite, yet always with a subtle element of surprise. La Terrazza is open for casual, buffet-style breakfast and lunch with indoor or al fresco dining on the outdoor terrace. During the evening, the venue transforms into an a la carte Italian restaurant. Seating is limited for dinner and reservations are recommended. Silver Note A sumptuous, intimate setting with a lively, joie de vivre ambience is the perfect place to dine, dance and dream the night away... Small plate tapas-style dishes of mouth-watering international cuisine perfectly compliment the rich, exciting entertainment as the smooth sounds of jazz and blues gently caress your ears. A refined late evening menu perfectly showcases the panache and style of Silver Moon's plentiful dining options, so expect multisensory fireworks as you swing and sway effortlessly across the dance floor as Silver Moon gracefully takes you to your next destination. Spaccanapoli Reflecting Silversea's Italian heritage, this emblematic street in Naples divides the city in two and is renowned for its pizzerias. No visit to the city is complete without a journey to Spaccanapoli. Therefore it is unsurprising that Spaccanapoli aboard Silver Moon reflects the true Italian way of life: the freshest ingredients, authentic dough and a perfect sense of the fabled Italian lust for life. The simplicity of la dolce vita is reflected in the relaxed dining style of the restaurant. Kaiseki The fine art of Kaiseki lies in its meticulous preparation and beautiful presentation. Dishes reflect a passion for tradition and performance and our reinterpretation of these values is clear. Balanced menus have been inspired by the five elements of Japanese nutritional cuisine and respect the equilibrium of yin and yang. Daytime menus feature a varied and balanced menu of sushi, sashimi and other raw Asian-inspired dishes, while the evenings are alive with the taste and traditions of fine Japanese dining. PUBLIC AREAS S.A.L.T. Bar Nothing says

authentic experience better than Silver Moon's S.A.L.T. Bar. Get a taste for the authentic and settle down to enjoy locally-inspired cocktails and drinks. How can you go wrong with a Rum Punch in Barbados, a Pastis over ice in Marseille or a Pisco Sour in Lima? Nothing unites new faces and old friends in quite the same way. Be inspired to find your perfect locally-inspired beverage at the S.A.L.T. Bar and let in the colour and flavours of your journey rush in. S.A.L.T. Lab Welcome to the S.A.L.T. Lab, an interactive space where guests can deep-dive into local culinary heritage and techniques. Join our talented chefs and learn how your region's food is central to its culture. Engage in your destination through workshops, lectures and cooking demonstrations for an authentic souvenir not available in any shop. The S.A.L.T. Lab is not just about food and flavour; it is a unique place where holistic destination immersion gives an entirely new dimension to travelling. This is where the magic happens! Panorama Lounge From early morning to late at night, the Panorama lounge offers everything you could wish for. A peaceful retreat that is the perfect place to break away to, a social place to meet and greet old friends, or an evening venue to partake in a cocktail as you sit back and watch the world go by. Sink into the plush seats and come evening, enjoy listening to the gentle sounds of a pianist, or the invigorating beats of our in-house DJ. Casino Let the fun begin! Channel your inner James Bond and enjoy a flutter at a variety of table games including American Roulette, Blackjack and Ocean Poker as Silver Moon glides silently through the waves. An assortment of multi-game, multi-denominational reel and video slot machines are also available. Prepare yourself for a luxurious and exhilarating experience with every turn of a card and spin of the wheel. Game on! Dolce Vita Our main bar has been newly reimagined for Silver Moon! Dolce Vita has of course kept her

The Small Cruise Ship Collection
www.small-cruise-ships.com

01432 507 280 (within UK)

info@small-cruise-ships.com | small-cruise-ships.com



The Small Cruise Ship Collection

www.small-cruise-ships.com

small-cruise-ships.com

info@small-cruise-ships.com

legendary charm, inspired cocktails, stylish decor and comfortable seating, but a central bar now means the warm ambience is better than ever! Oozing Italian glamour, Dolce Vita is a relaxed, refined bar with a nightly piano player playing all your favourite tunes. Perfect for pre-dinner aperitivi, or even a post-dinner cocktail, Dolce Vita is truly the beating heart of social life on board. Fitness Centre With state of the art Technogym® equipment, free weights and speciality classes, the Fitness Centre brings together elite design with programs that are specifically created for your body type and needs. With personal trainers available for individual sessions, training here is more a five-star experience for all levels of fitness and experience. And with the best view that you'll ever get whilst working out, there are definitely no more excuses ... Zagara Beauty Spa Relax, rejuvenate and renew all your senses. The Zagara Beauty Spa by Silversea is a sanctuary of pure bliss... Sweeping sea views from the floor-to-ceiling windows, nine treatment rooms, an acupuncture suite, relaxation areas and a dedicated outdoor whirlpool allow delectable indulgence on board. Invigorating therapies including facials, body wraps and massages, plus men's and women's saunas and steam rooms are perfect for relaxing before your spa treatment or after your workout. Observation Library Set on the highest level at the very top of the ship, this is a quiet space for reading and reflection while being dazzled by the undulating seascapes that are constituent to life on board. Borrow a book from the in-house library, read the papers or just embrace the tranquillity of being at sea. Connoisseur's Corner Our smoking lounge aboard Silver Moon is our latest venue where cigar-lovers can buy and sample some of the world's finest Havanas, Cohibas, Partagas, Montecristos, Ramon Allones and Bolivars. Combining all the elements of cigar culture both indoors and on its stylish terrace,

the Connoisseur's Corner is where aficionados can meet and mingle to share their iconic passion. Arts Cafe Nestled cosily on deck 8 is the all-new Arts Cafe. Hosting varied and exciting exhibitions, the Arts Cafe will showcase paintings and sculptures from a broad range of talent. The distinctive design of the venue is a relaxing getaway and offers daytime cuisine in the form of a cafe and deli-bar. But come early evening, the venue turns into a lively, evening cocktail lounge meaning you can retreat to one of the comfortable chairs, grab a drink and relax as you absorb the incredible view and watch the world float by. Whether you prefer the gentle sea breeze of the terrace or the sophistication of the inside, a superlative experience is always assured. Pool Deck & Jacuzzi Area The epitome of open air living -- defining how you enjoy the outdoors, this is the place to cool off, unwind and enjoy the sunshine. Take a dip in the pool, relax in one of the whirlpools or simply soak up the view from one of the sunbeds, while your pool attendant anticipates your every whim. A little more ice? Certainly. A plush towel to dry off with? Of course. With breathtaking landmarks gliding by, dive into the clear waters in a setting that is so idyllic that you will not want to disembark. Boutique Exceptional shopping experiences do not end in the cosmopolitan cities we visit. Silversea's striking new shipboard boutiques, reimagined and redesigned are stunning modern design spaces befitting the finest creations from legendary designers. Carefully selected partners onboard Silversea's duty-free boutiques offers our guests a carefully curated selection of cutting edge fashions, jewelry, accessories, fine perfumes, cosmetics and Silversea Logo collection all at duty-free prices. Zagara Beauty Salon A full range of salon services including hairstyling, manicures and pedicures, is available on board this luxury cruise ship for both men and women. Appointments for these chargeable services may be

The Small Cruise Ship Collection
www.small-cruise-ships.com

01432 507 280 (within UK)

info@small-cruise-ships.com | small-cruise-ships.com



The Small Cruise Ship Collection

www.small-cruise-ships.com



small-cruise-ships.com

info@small-cruise-ships.com

made on board the ship, or in advance via My Silversea. Maintain the look of prestige travel while you cruise. Venetian Lounge The grandeur and magic of music and theatre. The experience of being transported by performance. That satisfying feeling of seeing an evening show ... Welcome to Venetian Lounge, a place where the arts of theatre and music meet with full-scale productions and feature films. Paying tribute to a golden age of glamour, Venetian Lounge offers belle-epoque style cabaret seating, with intimate tables and chairs subtly placed between the rows of comfortable tiered banquettes. As the stage lights are dimmed, soak up the atmosphere, relax and enjoy a night of dazzling sights

and sounds.



The Small Cruise Ship Collection

www.small-cruise-ships.com

01432 507 280 (within UK)

info@small-cruise-ships.com | small-cruise-ships.com



The Small Cruise
Ship Collection

www.small-cruise-ships.com

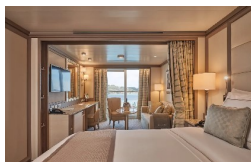


small-cruise-ships.com

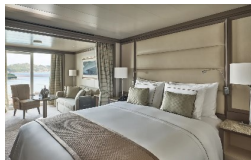
info@small-cruise-ships.com

INSIDE YOUR SHIP

Classic Veranda Suite



Deluxe Veranda Suite



Grand Suite



Owner's Suite



Panorama Suite

Royal Suite

Silver Suite

Superior Veranda Suite



The Small Cruise
Ship Collection

www.small-cruise-ships.com

01432 507 280 (within UK)

info@small-cruise-ships.com | small-cruise-ships.com



The Small Cruise Ship Collection

www.small-cruise-ships.com



small-cruise-ships.com

info@small-cruise-ships.com

PRICING

04-Sep-2025 to 11-Sep-2025

Vista Suite	£5304 GBP pp
Grand Suite	£13821 GBP pp
Classic Veranda Suite	£6120 GBP pp
Silver Suite	£8670 GBP pp
Royal Suite	£12189 GBP pp
Owner's Suite	£16473 GBP pp
Deluxe Veranda Suite	£6579 GBP pp
Panorama Suite	£5610 GBP pp
Superior Veranda Suite	£6273 GBP pp



The Small Cruise Ship Collection

www.small-cruise-ships.com

01432 507 280 (within UK)

info@small-cruise-ships.com | small-cruise-ships.com