

The Small Cruise Ship Collection

www.small-cruise-ships.com

small-cruise-ships.com

info@small-cruise-ships.com

FROM THE NORWEGIAN FJORDS TO THE BAY OF BISCAY LUXURY CRUISE

Fall under the spell of an enchanted journey linking the spectacular fjords of Norway to the elegant shorelines of Southwestern France. Between vertiginous reliefs and majestic waterfalls, the Nordic landscapes will unveil raw and soothing nature, before making way, travelling down the North Sea, for softer horizons, where Belgium reveals its discreet coastlines, with their maritime heritage and authentic charm. Gradually, Normandy then Brittany will come into view, with characterful ports, historic villages and the light of the Atlantic, down to the Gironde estuary, home to a warmer atmosphere shaped by way of life and wide open spaces.



ITINERARY

Day 1 - Bergen

Located at the end of **Byfjord**, **Bergen** was the capital of Norway in the 12th and 13th Centuries and has preserved some very beautiful monuments from the time when it was home to royalty. Wandering through Bergen's streets means going back in time, in search of the hidden treasures that have been listed as **World Heritage Sites by UNESCO**. A veritable openair museum, Bergen is home to a thriving artistic community of painters, potters, jewellers. The Bergen cable car offers you a splendid panorama over the port and the surrounding fjords. Do not miss the visit to the old quarter with its narrow streets, a testimony of the power of the hanseatic

The Small Cruise Ship Collection

www.small-cruise-ships.com

01432 507 280 (within UK)

info@small-cruise-ships.com | small-cruise-ships.com



The Small Cruise Ship Collection

www.small-cruise-ships.com

small-cruise-ships.com

info@small-cruise-ships.com

League that controlled trade in Northern Europe at the end of the Middle Ages.

Day 2 - Eidfjord

Eidfjord is nestled in one of the last branches of the beautiful **Hardanger Fjord**, 'the Norwegian orchard', which has been famous for its fruit production since medieval times. All the forces of nature seem to come together in this ancient glacial valley. Imposing and majestic mountains border the **Hardangervidda National Park**, the largest high-altitude plateau in Europe. The serene waters of the fjord and **Lake Eidfjord** are matched by the roar of the **Voring Falls**, one of Europe's highest waterfalls and Norway's main source of hydroelectric power.

Day 2 - Sailing in the Hardangerfjord

In the heart of Norway's natural scenery, to the southeast of Bergen, you will sail the peaceful waters of the **Hardangerfjord**, the second longest fjord in Norway. At the wide mouth of this majestic fjord, gently sloping valleys offer the sight of lush meadows and fruit trees galore. Moreover, it is rightly nicknamed the "fruit orchard of Norway". As you continue sailing and move further inland, the fjord narrows and the rolling surroundings make way for vertiginous walls and high mountainous areas. Enhanced by the reflections of the light on the soft waters, at times clear, at times deep, the landscapes become wilder and reveal an uncut diamond of singular beauty.

Day 3 - Egersund

Like a painter's palette, the former industrial town of **Egersund** unveils its colours as if to better charm its passing visitors. Its small wooden houses, among the best conserved in Norway, certainly display **colourful façades**

that distinguish them from the other municipalities of the southern Norwegian coast, which opted for white at a time when this was a sign of wealth. Admire the façades of Strandgaten, the **former main street** of the town, and wander the old district of Hauen, which is now full of cafes, galleries and boutiques. Also make a detour to the Heidningeholmen Church, whose foundations date back to the 17th century, and dive into Egersund's past.

Day 4 - At sea

During your journey at sea, make the most of the many services and activities on board. Treat yourself to a moment of relaxation in the spa or stay in shape in the fitness centre. Depending on the season, let yourself be tempted by the swimming pool or a spot of sunbathing. This journey without a port of call will also be an opportunity to enjoy the conferences or shows proposed on board, depending on the activities offered, or to do some shopping in the boutique or to meet the PONANT photographers in their dedicated space. As for lovers of the open sea, they will be able to visit the ship's upper deck to admire the spectacle of the waves and perhaps be lucky enough to observe marine species. A truly enchanted interlude, combining comfort, rest and entertainment.

Day 5 - Antwerp

Located in the Flemish region of **Belgium**, **Antwerp** is worth a visit for its remarkable architectural heritage. In this moderately-sized, cosmopolitan city, you will be able to stroll around the ancient city centre, dominated by the most important monument in Antwerp, the **Notre-Dame Cathedral**, a UNESCO World Heritage site. The museums of the city retrace the history of Antwerp, including the **home of Rubens**, containing the works of the painter, and the

The Small Cruise Ship Collection
www.small-cruise-ships.com

01432 507 280 (within UK)

info@small-cruise-ships.com | small-cruise-ships.com



The Small Cruise Ship Collection

www.small-cruise-ships.com

small-cruise-ships.com

info@small-cruise-ships.com

****Plantin-Moretus museum**** , a print works and publishing house that are UNESCO listed. From ****Grote Markt**** , the central square in the city, you will be captivated by the attractive sight formed by the unusual medieval architecture of the guild houses.

Day 6 - Ostend

Located on the Flemish coastline, half way between France and the Netherlands, the elegant city of ****Ostend**** is a favourite summer destination for Belgians. You can enjoy the "queen of beaches", a stretch of fine white sand punctuated by breakwaters, covered by the North Sea at high tide. The seafront boasts sumptuous facades from the Belle Epoque, such as ****Villa Maritza,**** which stands witness to this seaside town's rich past. Art amateurs will enjoy the excellent ****Kunstmuseum aan Zee,**** where a retrospective of Belgian art dating from 1830 is on display.

Day 7 - Honfleur

A treasure of the ****Cote Fleurie,**** Honfleur is located on the edge of la Crique de Rouen in Normandy. You will no doubt admire the historical ships moored in its ****old port.**** With its tall, slate-covered houses, the quays provide a great setting for a very nice walk. In the streets behind the harbour, you will see many timber houses. These picturesque places were the cradle of several pre-impressionist painters. You can see their works in the ****Eugene Boudin museum.**** Exhibited works represent scenes of medieval streets and the coastline as it used to be, as illustrated by the Butin beach and its lush green hillsides.

Day 8 - Saint-Malo

The mere mention of ****Saint-Malo**** 's name is enough to plunge us back into the richness of its past. The fortifications

stand as testimony to the Malouins' determination to defend their citadel, fought over by France and Britain in turn. When we drop anchor here, immerse yourself in the diversity of its heritage: the time when privateers sailed the oceans in search of trade and victories; the legendary yacht races the port city is still famous for, such as the Route du Rhum; and the final resting place of the French writer François-Rene de Chateaubriand, who was born here and chose to be buried here anonymously.

Day 9 - Roscoff

Once a city of corsairs, the port of ****Roscoff**** is now a popular seaside resort proud to have been labelled a **"**Small Town with Character**"** . From its tumultuous and fascinating past, Roscoff has preserved an exceptional architectural heritage from the 16th and 17th centuries. Its historic centre is brimming with relics from the past: the magnificent granite mansions of shipowners, the ****Notre-Dame-de-Croaz-Batz gothic church**** , and the ****Old Port**** , once the stronghold of smugglers and merchants. The town is also known for its foreshore, which boasts a rich algal biodiversity. Its study, beginning in 1872, led to the creation of the first European research and teaching centre in marine biology and oceanography, the ****Station Biologique de Roscoff**** .

Day 10 - Quiberon

Welcome to the ****Quiberon**** peninsula in the ****Morbihan,**** Brittany's wild and contrasting landscape. On the Atlantic Ocean side, you will see stretches of wild coastline with rugged, windswept cliffs, and on the Quiberon Bay side, long sandy beaches overlooking emerald waters. ****Port Haliguen**** , a ten-minute walk from Quiberon, is a marina that has retained all its charms of yesteryear.

The Small Cruise Ship Collection
www.small-cruise-ships.com

01432 507 280 (within UK)

info@small-cruise-ships.com | small-cruise-ships.com



The Small Cruise Ship Collection

www.small-cruise-ships.com

small-cruise-ships.com

info@small-cruise-ships.com

Day 11 - Sailing in the Gironde Estuary

Located on France's Atlantic coast, **the Gironde Estuary** stretches between Bordeaux and the Atlantic Ocean. Sail through peaceful landscapes lined with **traditional fishing huts, charming villages, and renowned vineyards** bordering the estuary's shores. Between shifting light and preserved nature, let yourself be carried away by the unique atmosphere of this majestic waterway, shaped by the tides and the region's maritime history.

Day 12 - Bordeaux

Bordeaux stretches along the banks of the Garonne river, in South-West France. Its rich wine tradition makes it the **world capital of wine**. **Let yourself be carried away by the history of the Port de la Lune, made a UNESCO World Heritage site for its prestigious classical architecture.** On the famous Place de la Bourse, the past and the present unite: here you can observe the majestic old buildings reflected in the contemporary **Miroir d'eau** creation.

Please note:

Itineraries are subject to change.



The Small Cruise
Ship Collection

www.small-cruise-ships.com

01432 507 280 (within UK)

info@small-cruise-ships.com | small-cruise-ships.com



The Small Cruise Ship Collection

www.small-cruise-ships.com

small-cruise-ships.com

info@small-cruise-ships.com

YOUR SHIP: LE CHAMPLAIN

YOUR SHIP: Le Champlain

VESSEL TYPE:

LENGTH:

PASSENGER CAPACITY:

BUILT/REFURBISHED:

Featuring innovative and environmentally-friendly equipment, elegantly designed cabins, spacious suites with large windows, and lounge areas that open onto the outside, this new limited-capacity yacht boasting just 92 cabins and suites will offer you a truly unique cruising experience. As the first ship in a new series, Le Champlain will embody the unique atmosphere that is the cruise line's hallmark: a subtle blend of refinement, intimacy and comfort. Aboard this ship that flies the French flag, you will experience the incomparable pleasure of an intimate cruise, with the possibility of exploring an ever-increasing range of destinations in an ethnic-chic ambiance with luxury service. Experience a luxurious setting where the accent is on authenticity and passion for travel. RESTAURANTS As it is an essential part of French culture, gastronomy will naturally have pride of place aboard this new ship. Through its two restaurants, Le Champlain will invite you on a journey to elegance and epicureanism. In a relaxed atmosphere, a first dining area located on Deck 3 and able to seat 70 will serve grilled meats daily, along with a variety of salads and desserts. To the back of Deck 4, you will find a 260 m² panoramic restaurant which can accommodate all of our passengers in a single sitting. Designed

differently to that on our other ships, this dining area, which opens onto the outside, will have a buffet of salads, desserts and cheeses at your disposal. Our discreet and attentive crew will provide table service for hot meals. PUBLIC AREAS Like Le Boreal and its sisterships, Le Champlain has many common areas that are designed and equipped to meet all of your needs while preserving the intimacy of each passenger. A 140 m² reception area includes: A reception/concierge desk, An excursions desk, The ship's administrative services, The sales office, manned by our Guest Relations Officer, Our 50 m² boutique which sells clothing, jewellery, beauty products, postcards and various accessories, Toilets accessible to passengers with reduced mobility. A new hydraulic platform with adjustable height provides: Easier boarding than on any other cruise ship, Easier Zodiac embarkation and disembarkation for expeditions, Easier access to the sea for swimming and practising various water sports such as kayaking or paddle-boarding. A pool deck offering: A pool with a panoramic view, equipped with a counter-current swimming system, A pleasant solarium, An outdoor bar and lounge with armchairs and sofas. A 200 m² main lounge which can accommodate all of our passengers to share convivial moments and to host activities organised during the day or evening. Lastly, a theatre that seats 188, equipped with: The latest sound and lighting technology, A LED wall as the stage backdrop, for the projection of high-resolution images and videos. Please click the following links to read more about Ponant and the other Ponant

The Small Cruise Ship Collection

www.small-cruise-ships.com

01432 507 280 (within UK)

info@small-cruise-ships.com | small-cruise-ships.com



The Small Cruise Ship Collection

www.small-cruise-ships.com



small-cruise-ships.com

info@small-cruise-ships.com



cruise ships.



The Small Cruise Ship Collection

www.small-cruise-ships.com

01432 507 280 (within UK)

info@small-cruise-ships.com | small-cruise-ships.com

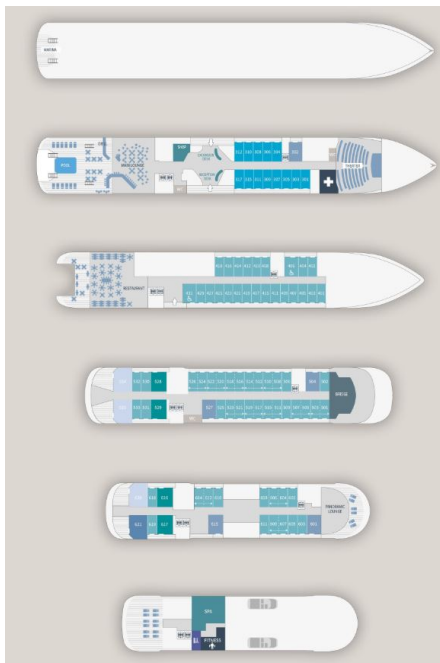
The Small Cruise Ship Collection

www.small-cruise-ships.com

small-cruise-ships.com

info@small-cruise-ships.com

INSIDE YOUR SHIP



Deluxe Stateroom

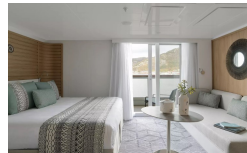


Deluxe Suite Deck 3



Deluxe Suite Deck 4

Deluxe Suite Deck 5



Deluxe Suite Deck 6

Grand Deluxe Suite

Owner's Suite

Prestige Stateroom Deck 4

Prestige Stateroom Deck 5

Prestige Stateroom Deck 6

Prestige Suite Deck 5

Prestige Suite Deck 6

Privilege Suite Deck 5

Privilege Suite Deck 6



The Small Cruise Ship Collection

www.small-cruise-ships.com

small-cruise-ships.com

info@small-cruise-ships.com

PRICING

08-Jul-2028 to 19-Jul-2028

Deluxe Suite Deck 5	£7285 GBP pp
Prestige Stateroom Deck 6	£5435 GBP pp
Deluxe Suite Deck 3	£7285 GBP pp
Deluxe Stateroom	£4835 GBP pp
Owner's Suite	£12365 GBP pp
Privilege Suite Deck 6	£8285 GBP pp
Privilege Suite Deck 5	£8285 GBP pp
Prestige Suite Deck 6	£8075 GBP pp
Prestige Suite Deck 5	£7835 GBP pp
Prestige Stateroom Deck 5	£5235 GBP pp
Prestige Stateroom Deck 4	£5085 GBP pp
Grand Deluxe Suite	£8525 GBP pp
Deluxe Suite Deck 6	£7285 GBP pp
Deluxe Suite Deck 4	£7285 GBP pp