

The Small Cruise Ship Collection

www.small-cruise-ships.com

small-cruise-ships.com

info@small-cruise-ships.com

FROM THE ENGLISH CHANNEL TO THE IRISH SEA - BRITISH ISLES LUXURY CRUISE

PONANT invites you on a brand-new exploration cruise from Normandy to the British shores via mythical Cornwall and the Irish coast. This 9-day interlude will take you to the heart of lush green countryside, authentic ports, and historic cities. From the charming port of the Norman city of Honfleur, Le Boreal will set a course northward, in the mythical waters of the English Channel, to reach the Isle of Portland. Succumb to the charms of this limestone-rich island covered in lush vegetation. Here, serenity and a gentle way of life reign. Next, you will sail to legendary Cornwall. In Fowey, you will marvel at Mother Nature's masterpieces. There, you will discover a spellbinding environment of majestic cliffs and vast natural spaces, conducive to escape and tranquillity. Then, Falmouth will emerge before you. Surrounded by charming coastal landscapes, beaches of golden sand, and isolated coves, the British city promises a unique experience. Le Boreal will leave England for Ireland, where you will discover the charming Kinsale Harbour, at the estuary of the River Bandon. Back in England, you will call at Fishguard. This small coastal town, sitting between two hills, was once a Viking trading post. After calling at Warrenpoint, a charming small town nestling in an exceptional natural environment, you will reach Portrush. From here, you will have the possibility of visiting the legendary Giant's Causeway, a gigantic geological formation listed with UNESCO. For its grand finale, this trip draws to an end in Glasgow, Scotland's biggest city, known for its convivial and authentic atmosphere.



ITINERARY

Day 1 HONFLEUR

A treasure of the Cote Fleurie, Honfleur is located on the edge of la Crique de Rouen in Normandy. You will no doubt admire the historical ships moored in its old port. With its tall, slate-covered houses, the quays provide a great setting for a very nice walk. In the streets behind the harbour, you will see many timber

The Small Cruise Ship Collection
www.small-cruise-ships.com

01432 507 280 (within UK)

info@small-cruise-ships.com | small-cruise-ships.com



The Small Cruise Ship Collection

www.small-cruise-ships.com

small-cruise-ships.com

info@small-cruise-ships.com

houses. These picturesque places were the cradle of several pre-impressionist painters. You can see their works in the Eugene Boudin museum. Exhibited works represent scenes of medieval streets and the coastline as it used to be, as illustrated by the Butin beach and its lush green hillsides.

Day 2 ISLE OF PORTLAND

Lying along the steep shores of the Channel, at the southernmost point of the county of Dorset, in south-west England, the limestone-rich island of Portland surprises visitors with its wild and unspoiled natural environment, its easy way of life, and its mild seaside climate. The island was the site of the first Viking raid on British soil in 789 and still bears traces of a rich history. One of these is its castle, built in the 16th century, at the request of Henry VIII, to counter the French attempts to invade. The British island welcomes numerous species of migratory birds. It also stands out for its environment combining sheer cliffs, carved by the waves, and a rich biodiversity. This is an unforgettable port of call, where the accent is on tranquillity, elation and discovery.

Day 3 FOWEY

In mythical Cornwall, at the mouth of the River Fowey, the eponymous town surprises and enchants. Edged with lush valleys, Fowey is ideal for those who love nature and the great outdoors and are looking to escape and relax. The charming little town has many coastal hiking trails. Stroll through its narrow streets of its picturesque old town, which was home to the British novelist and playwright Daphne du Maurier as well as

inspiring her work.

Day 4 FALMOUTH

In the far south of legendary Cornwall, along the banks of the Fal ria, fall in love with the enchanting port city of Falmouth. Nestling at the heart of lush landscapes, between verdant plains and beautiful beaches edged by the crystal-clear waters of its bay, Falmouth is the ideal destination for visitors seeking serenity, history and authenticity. Here, you will be surprised by the perfect blend of maritime heritage, historical landmarks, natural beauty, and relaxed atmosphere.

Day 5 KINSALE

Considered Ireland's most beautiful village, Kinsale will captivate you with its sublime natural landscapes and rich cultural heritage. Located at the mouth of the Bandon River in County Cork, this charming little port is home to picturesque streets lined with colourful houses, art galleries and theatres, as well as to a 17th-century fort. Not far away, perched on a rocky promontory, stands the Old Head of Kinsale Lighthouse: still in operation today, it has magnificent views over the Atlantic Ocean.

Day 6 FISHGUARD

A small coastal town located in the South Wales, Fishguard will offer you a peaceful stop during your cruise. Nestling in the hollow of two hills, the city, once a Viking trading post, is now

The Small Cruise
Ship Collection
www.small-cruise-ships.com

01432 507 280 (within UK)

info@small-cruise-ships.com | small-cruise-ships.com



the ideal starting point for exploring the Welsh countryside. Across its vast expanses of fertile land, its green valleys and its magnificent moors, the region will reveal its rich historical heritage to you. Among other things, you will be able to visit mediaeval Pembroke Castle, renowned for its impressive architecture and the illustrious people who have lived there, such as Gerald de Windsor.

Day 7 WARRENPOINT

On the shores of Carlingford Lough, a fjord marking the eastern end of the border between Ireland and the UK, lies the charming seaside resort of Warrenpoint. Set in stunning natural surroundings and dominated by the Mourne and Cooley peaks, the area is ideal for walking. It is also the starting point for an escape to discover the archaeological site of Fort Navan, also known as Emain Macha, once considered the capital of the Ulster kings. At the Castle Ward, a Victorian tower house, you can gain an insight into the lives of its inhabitants in the 18th century. Or you may prefer to learn about the history of Belfast's water supply at Silent Valley Park.

Day 8 PORTRUSH

Portrush is a small seaside resort in County Antrim, Northern Ireland, which is famous for hosting The Open golf tournament in 1951 and 2019. The main part of the old town is located on a peninsula that is 1.5-km (1-mile) long, Ramore Head. With three beautiful sandy beaches, the town has a pleasant seaside atmosphere and great appeal due to its proximity to exceptional cultural sites, such as Dunluce Castle or the Giant's Causeway,

a unique natural wonder, the most fascinating formation of basalt columns in the world, and the first UNESCO World Heritage Site in Northern Ireland.

Day 9 GLASGOW, SCOTLAND

In the heart of the Clyde Valley, the bustling city of Glasgow contrasts starkly with the wild beauty of the surrounding countryside. Scotland's biggest city overflows with landmarks from its extensive artistic heritage and outstanding architectural tradition. The city's chequerboard layout makes walking through the major pedestrian thoroughfares easy: go with the flow and let the lively street atmosphere take you past the many Victorian monuments. Don't miss the collections on display in the numerous museums and art galleries. The Kelvingrove Art Gallery and Museum is an outstanding example.

Please note:

Itineraries are subject to change.



The Small Cruise Ship Collection

www.small-cruise-ships.com

small-cruise-ships.com

info@small-cruise-ships.com

YOUR SHIP: L'AUSTRAL

YOUR SHIP:

L'Austral

VESSEL TYPE:

**142 metres. Passenger Capacity:
264 (200 in Antarctica). Built:**

LENGTH:

2011

PASSENGER CAPACITY:

BUILT/REFURBISHED:

Luxury Expedition / Cruise Ship This superb mega-yacht with 132 cabins is the result of the expertise of the Italian Fincantieri shipyard and French sophistication, as interpreted by designer Jean-Philippe Nuel. L'Austral has a unique atmosphere, a subtle blend of luxury, intimacy and well-being. A sleek silhouette softened by elegantly smooth contours and large, arched windows opening up to the sea and the light: so many features come together to give L'Austral her distinctive shape. Precious materials, discreet elegance and a perfect balance between chic and casual, combine to make you feel as if you are on your own private yacht. A design blending tradition and innovation, where a nautical mood has been subtly recreated. Precious materials in smoothing neutral tones are brought to life with splashes of cheerful reds. So many personal touches create the spirit of a "private yacht". Suites and staterooms You can expect magnificent ocean views as 124 staterooms and suites have balconies. Individually-controlled airconditioning · Cabin layout: kingsize bed, or twin beds, communicating cabins available (children welcome) · Minibar · Flat screen satellite TV · iPod™

players · Desk with stationery · Electronic safe · French bath products · Dressing table and hairdryer · Bath robes · Satellite direct line telephone · 110/220 volts · 24hr room service · WiFi · Balcony Cuisine Loyal to the great French tradition, the haute cuisine on board is worthy of the finest restaurants, where discreet, attentive service is the hallmark. Choose from two restaurants for breakfasts, lunch and dinner. The Gastronomic Restaurant is situated on Le Liberte Deck and serves you French and international cuisine accompanied by fine wine. On the Grill Restaurant, you have the opportunity to eat outside and enjoy buffet lunch and themed dinner. Life On Board Whether you want to join other guests in the theatre or games area (Wii™ consoles, etc), or relax on your own in a quiet corner of the library, L'Austral has been designed to meet the needs of every guest. Everything has been done to preserve the independence of each guest to suit their personal tastes: lounges for lectures and shows, a spa in partnership with Sothys™, but also more intimate spaces such as the library and internet corner. Comfortable cabins, nearly all with private balcony, are available for families either as triples or as communicating cabins. There is also a games area with Wii™ consoles, children's menus, and a baby-sitting service. Just as if you were on a private yacht, your time is your own to do as you please. Fitted with the latest equipment (Kinesis Wall, running machine) and in partnership with the famous Sothys™ brand, the Beauty Centre on L'Austral welcomes you for some unforgettable moments of relaxation and pampering (beauty treatments, hairdresser). Wheelchairs 3 specially adapted wheelchair cabins (Deck 3 = Superior cabin no. 307, no balcony, Deck 4 = Prestige Cabin no. 407 - with



The Small Cruise Ship Collection

www.small-cruise-ships.com



small-cruise-ships.com

info@small-cruise-ships.com

balcony and Deck 5 = Prestige Cabin no 509, with balcony) and lifts to all decks/areas. Details Please click the following links to read more about Ponant and the other Ponant



cruise ships.



The Small Cruise Ship Collection

www.small-cruise-ships.com

01432 507 280 (within UK)

info@small-cruise-ships.com | small-cruise-ships.com

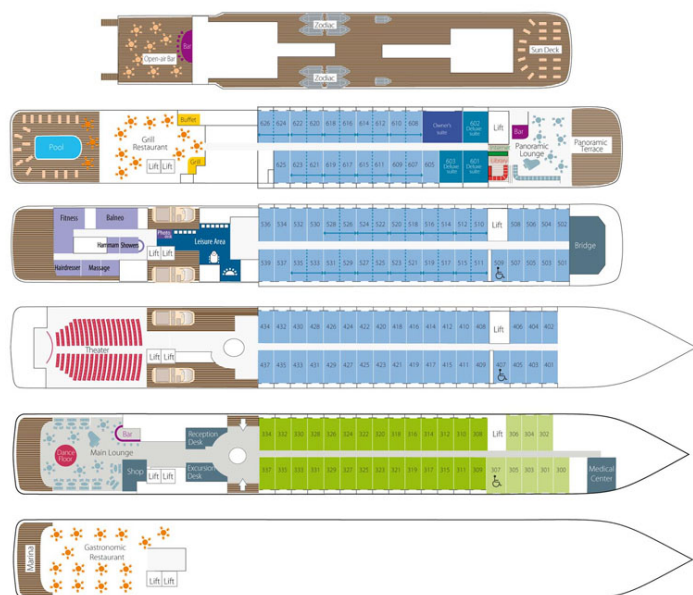
The Small Cruise Ship Collection

www.small-cruise-ships.com

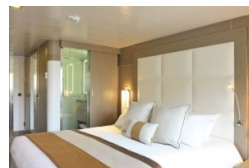
small-cruise-ships.com

info@small-cruise-ships.com

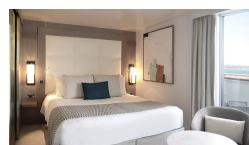
INSIDE YOUR SHIP



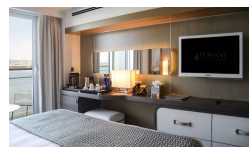
Deluxe Stateroom



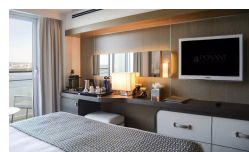
Deluxe Suite



Prestige Deck 4



Prestige Deck 5



Prestige Deck 5 Suite

Prestige Deck 6

Prestige Deck 6 Suite

Superior Stateroom



The Small Cruise Ship Collection

www.small-cruise-ships.com

small-cruise-ships.com

info@small-cruise-ships.com

PRICING

19-May-2026 to 27-May-2026

| | |
|-----------------------|--------------|
| Deluxe Stateroom | £3795 GBP pp |
| Prestige Deck 4 | £3985 GBP pp |
| Prestige Deck 5 Suite | £6165 GBP pp |
| Prestige Deck 6 Suite | £6355 GBP pp |
| Superior Stateroom | £3515 GBP pp |
| Prestige Deck 6 | £4265 GBP pp |
| Prestige Deck 5 | £4115 GBP pp |
| Deluxe Suite | £5725 GBP pp |

ADDITIONAL CHARGES:

Port Taxes 520 AUD pp

The Small Cruise
Ship Collection
www.small-cruise-ships.com

01432 507 280 (within UK)

info@small-cruise-ships.com | small-cruise-ships.com