

The Small Cruise Ship Collection

www.small-cruise-ships.com

small-cruise-ships.com

info@small-cruise-ships.com

FROM MADAGASCAR TO THE SEYCHELLES, UNSUSPECTED ISLANDS LUXURY CRUISE

Between the island country of Madagascar and the Seychelles, nature will plunge you into a waking dream. As the gentle trade winds caress the turquoise ocean, the idyllic islands and captivating atolls of the Indian Ocean stretch out before you, draped in mysterious beauty. Nosy Be, Nosy Tanikely, Nosy Hara, Diego Suarez The jewels of Madagascar unveil their treasures: primary forests where rosewood, camphor and ylang-ylang trees thrive, underwater scenery sheltering a myriad of colourful fish, picturesque bays edged by an emerald sea. The show continues in the atolls of the Seychelles, where each landscape becomes the setting of preserved fauna: white sandy beaches, crystal-clear water teeming with sea life, lush vegetation home to numerous bird species. An unforgettable adventure blending exploration with wonder in the heart of untouched nature.



ITINERARY

Day 1 - Nosy Be

Nosy Be (from the Malagasy: Nosy meaning island and Be meaning large), in the Mozambique Channel, is located near the north-eastern coastlines of Madagascar. A former French protectorate, known under the promising name of "the scented island", of volcanic origin, it is located on a maritime route with access to India and Asia. Cosmopolitan, a boulevard of encounters, its mixed-race and multicultural population still remembers its past as a significant trading post. Today, its 321 km² enchant lovers of nature and idyllic beaches. Its sumptuous primary forest is home to animals that are endemic to the island as well as surprising flora.

The Small Cruise Ship Collection

www.small-cruise-ships.com

01432 507 280 (within UK)

info@small-cruise-ships.com | small-cruise-ships.com



The Small Cruise Ship Collection

www.small-cruise-ships.com

small-cruise-ships.com

info@small-cruise-ships.com

Day 2 - Nosy Komba

During your cruise, your ship will stop in **Nosy Komba**, otherwise known as **lemur island**. Not far from the Madagascar mainland, this volcanic island shaped like a gigantic turtle shell is covered in dense tropical rainforest. This vegetation is home to amusing **black lemurs** - furry orange-brown and black creatures that are surprisingly agile and call to each other from amongst the trees. The many small beaches and the emerald-coloured water make Nosy Komba a natural gem that only a select few visit.

Day 2 - Nosy Tanikely

In the heart of the **Nosy Be** archipelago, discover **Nosy Tanikely**, nicknamed the "island of little earth." In addition to a magnificent white sand beach bordering a lagoon of crystal-clear waters, the island, which is uninhabited, has exceptional marine and terrestrial biodiversity. Thanks to this, the area has been classified as a **marine and coastal protected area** since 2010. It is a perfect spot for swimming and snorkelling. Hiking fans won't be left out either: a stunning walk that climbs to the summit of the island will enable them to discover the old lighthouse built at the beginning of the 20th century and enjoy superb views over the ocean and surrounding islands.

Day 3 - Nosy Hara

Its limestone rock formations rising from the waters, or marine "tsingies" typical of Madagascar, make **Nosy Hara** both exceptional and immediately recognisable. Located to the north-west of Madagascar, the island is a protected area due to its incredible biodiversity. It is a veritable open-air aquarium inhabited by around 280 marine species. The rocky columns edged with gorgeous white-sand and pebble beaches fading

into shades of deep blue make an idyllic place cut off from the world. Succumb to the charms of this untouched jewel that will welcome you into its stunning decor for a special experience. This is an ideal location for snorkelling.

Day 4 - Diego Suarez (Antsiranana)

A jewel on the north coast of Madagascar, **Diego Suarez**, also known as **Antsiranana**, reveals itself in all of its splendour, from its idyllic beaches to its turquoise waters and its mountains. Enjoy the gentleness of its heavenly stretches of fine sand and fall under the spell of its pristine landscapes where nature reigns supreme. Diego Suarez is not only a nature sanctuary home to certain endemic species such as the brookesia micra, one of the world's smallest chameleons, it is also a dream location for hikers.

Day 5 - At sea

During your journey at sea, make the most of the many services and activities on board. Treat yourself to a moment of relaxation in the spa or stay in shape in the fitness centre. Depending on the season, let yourself be tempted by the swimming pool or a spot of sunbathing. This journey without a port of call will also be an opportunity to enjoy the conferences or shows proposed on board, depending on the activities offered, or to do some shopping in the boutique or to meet the PONANT photographers in their dedicated space. As for lovers of the open sea, they will be able to visit the ship's upper deck to admire the spectacle of the waves and perhaps be lucky enough to observe marine species. A truly enchanted interlude, combining comfort, rest and entertainment.

Day 6 - Assumption Island



The Small Cruise Ship Collection

www.small-cruise-ships.com

small-cruise-ships.com

info@small-cruise-ships.com

****Assumption Island**** is part of the ****Aldabra group**** (Outer Islands), situated in the south-west of the Seychelles. Discovered in the mid-18th century by the French captain Nicolas Morphey, this bean-shaped island covered in ****dunes**** and ****shrubs**** is relatively flat. A handful of people live there, in a small village in the island's west. The island's beaches are a ****major egg-laying and breeding site for sea turtles****. The surrounding waters are ideal for scuba diving. This is where Jacques-Yves Cousteau filmed some of the scenes for his famous documentary film "The Silent World", released in 1956.

Day 7 - At sea

During your journey at sea, make the most of the many services and activities on board. Treat yourself to a moment of relaxation in the spa or stay in shape in the fitness centre. Depending on the season, let yourself be tempted by the swimming pool or a spot of sunbathing. This journey without a port of call will also be an opportunity to enjoy the conferences or shows proposed on board, depending on the activities offered, or to do some shopping in the boutique or to meet the PONANT photographers in their dedicated space. As for lovers of the open sea, they will be able to visit the ship's upper deck to admire the spectacle of the waves and perhaps be lucky enough to observe marine species. A truly enchanted interlude, combining comfort, rest and entertainment.

Day 8 - Saint François Atoll

In the heart of the Outer Islands of the Seychelles, St. François Atoll paints the Indian Ocean in an infinite palette of blues. This coral atoll, made up of the Bijoutier and St. François islands, is exactly what people imagine when they think of the Seychelles. Formed around volcanos having vanished into the abyssal

depths of the Indian Ocean, its islands are protected by ****splendid and fragile coral reefs****. Here, the population is composed of myriad birds on land and of sea turtles and a multitude of fish in the water, making this the ideal place for hiking or snorkelling.

Day 9 - Rémire island

****Remire Island**** is like a piece of confetti in the Indian Ocean and is a captivating place to visit. Located in the ****Outer Islands of the Seychelles****, it is prized for its unique biodiversity, including its exceptionally rich underwater life. The rare inhabitants of this ****tropical islet**** watch over its preservation, and a walk amidst its lush vegetation, home to delightful birds, will delight fans of unspoilt areas. For those who love ****snorkelling****, myriad colourful fish live among the coral reefs that border the island.

Day 10 - Aride Island

****Aride**** is an island in the Seychelles situated a few kilometres north-west of Praslin. Listed as a ****nature reserve****, this pearl of the Indian Ocean will seduce you with the beauty of its landscapes of ****wild cliffs and fine-sand beaches****. Protected from human impact and sometimes called "bird capital", it is home to several endemic plants as well as exceptional wildlife. Most notably, it is the refuge of an impressive number of ****seabirds**** (Seychelles magpie-robins, terns, noddies, and more), and reptiles, such as Wright's skinks, which can be found in the island's wooded areas. Sea turtles can also be observed on the island's beaches.

Day 10 - La Digue Island

****La Digue Island**** is a veritable concentration of all the beauty of the Seychelles. Located 6 km south-east of Praslin,

The Small Cruise Ship Collection
www.small-cruise-ships.com

01432 507 280 (within UK)

info@small-cruise-ships.com | small-cruise-ships.com



The Small Cruise Ship Collection

www.small-cruise-ships.com

small-cruise-ships.com

info@small-cruise-ships.com

this small piece of land that looks like paradise is the third-largest island in the Seychelles, despite its modest size (5 km by 3 km)! Turquoise waters just asking you to swim in them, lush vegetation sheltering **giant tortoises**, beaches of fine sand fringed with coconut trees and surrounded with those emblematic **large granite rocks with their pink highlights** like at the famous Anse Source d'Argent: the perfect picture postcard... **Authentic and preserved**, the island follows a peaceful rhythm, with the only means of transport along its little roads being bikes or traditional oxcarts.

Day 11 - Victoria, Mahé

Discover **Mahé**, the main island of the Seychelles and also the largest of the archipelago, home to the capital, **Victoria**. Mahe has almost 70 beaches of fine sand, framed by the emblematic **granite rocks**, and whose crystal clear waters are renowned for their rich underwater life. The island is also famous for its **splendid mountain panoramas** accessible on hikes, such as the Morne Seychellois, which is 905 metres high and overlooks the Indian Ocean. Mahe is also an island full of history where fine colonial properties rub shoulders with **Creole houses** \- and don't forget the marvellous **Botanical Gardens** in Victoria.

Please note:

Itineraries are subject to change.



The Small Cruise Ship Collection

www.small-cruise-ships.com

01432 507 280 (within UK)

info@small-cruise-ships.com | small-cruise-ships.com



The Small Cruise Ship Collection

www.small-cruise-ships.com

small-cruise-ships.com

info@small-cruise-ships.com

YOUR SHIP: LE DUMONT D'URVILLE

YOUR SHIP: Le Dumont d'Urville

VESSEL TYPE:

LENGTH:

PASSENGER CAPACITY:

BUILT/REFURBISHED:

Featuring innovative and environmentally-friendly equipment, elegantly designed staterooms, spacious suites with large windows, and lounge areas that open onto the outside, this new limited-capacity yacht boasting just 92 staterooms and suites will offer you a truly unique cruising experience. As the first ship in a new series that remains true to the Ponant spirit, Le Dumont d'Urville will embody the unique atmosphere that is the cruise line's hallmark: a subtle blend of refinement, intimacy and comfort. Aboard this ship that flies the French flag, you will experience the incomparable pleasure of an intimate cruise, with the possibility of exploring an ever-increasing range of destinations in an ethnic-chic ambiance with luxury service. Experience a luxurious setting where the accent is on authenticity and passion for travel. **RESTAURANTS** As it is an essential part of French culture, gastronomy will naturally have pride of place aboard this new ship. Through its two restaurants, Le Dumont d'Urville will invite you on a journey to elegance and epicureanism. In a relaxed atmosphere, a first dining area located on Deck 3 and able to seat 70 will serve grilled meats daily, along with a variety of salads and desserts. To the back of Deck 4, you will find a 260 m² panoramic restaurant which can

accommodate all of our passengers in a single sitting. Designed differently to that on our other ships, this dining area, which opens onto the outside, will have a buffet of salads, desserts and cheeses at your disposal. Our discreet and attentive crew will provide table service for hot meals. **PUBLIC AREAS** Like Le Boreal and its sisterships, Le Dumont d'Urville has many common areas that are designed and equipped to meet all of your needs while preserving the intimacy of each passenger. A 140 m² reception area includes: A reception/concierge desk, An excursions desk, The ship's administrative services, The sales office, manned by our Guest Relations Officer, Our 50 m² boutique which sells clothing, jewellery, beauty products, postcards and various accessories, Toilets accessible to passengers with reduced mobility. A new hydraulic platform with adjustable height provides: Easier boarding than on any other cruise ship, Easier Zodiac embarkation and disembarkation for expeditions, Easier access to the sea for swimming and practising various water sports such as kayaking or paddle-boarding. A pool deck offering: A pool with a panoramic view, equipped with a counter-current swimming system, A pleasant solarium, An outdoor bar and lounge with armchairs and sofas. A 200 m² main lounge which can accommodate all of our passengers to share convivial moments and to host activities organised during the day or evening. Lastly, a theatre that seats 188, equipped with: The latest sound and lighting technology, A LED wall as the stage backdrop, for the projection of high-resolution images and videos. Please click the following links to read more about Ponant and the other Ponant

The Small Cruise Ship Collection

www.small-cruise-ships.com

01432 507 280 (within UK)

info@small-cruise-ships.com | small-cruise-ships.com



The Small Cruise Ship Collection

www.small-cruise-ships.com

small-cruise-ships.com

info@small-cruise-ships.com



cruise ships.

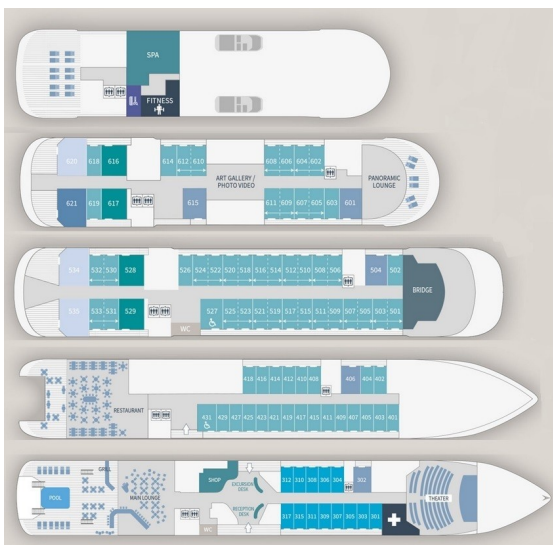
The Small Cruise Ship Collection

www.small-cruise-ships.com

small-cruise-ships.com

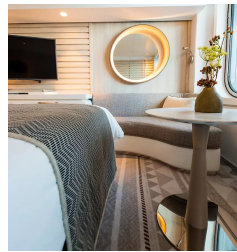
info@small-cruise-ships.com

INSIDE YOUR SHIP

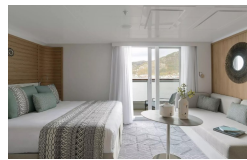


- Owner's Suite Deck 6
- Privilege Suites Deck 5-6
- Grand Deluxe Suites Deck 5-6
- Prestige Suites Deck 5-6
- Deluxe Suites Deck 5-6
- Prestige Cabins Deck 4-5-6
- Deluxe Cabins Deck 3

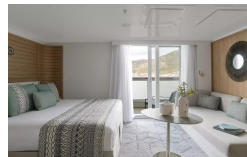
Deluxe Stateroom



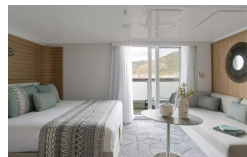
Deluxe Suite Deck 3



Deluxe Suite Deck 4



Deluxe Suite Deck 5



Deluxe Suite Deck 6

Owner's Suite

Prestige Stateroom Deck 5

Prestige Suite Deck 5

Privilege Suite Deck 5

Grand Deluxe Suite

Prestige Stateroom Deck 4

Prestige Stateroom Deck 6

Prestige Suite Deck 6

Privilege Suite Deck 6



The Small Cruise Ship Collection

www.small-cruise-ships.com

small-cruise-ships.com

info@small-cruise-ships.com

PRICING

07-Jan-2028 to 17-Jan-2028

Prestige Suite Deck 6	£12325 GBP pp
Privilege Suite Deck 6	£12905 GBP pp
Privilege Suite Deck 5	£12905 GBP pp
Prestige Suite Deck 5	£11755 GBP pp
Owner's Suite	£20585 GBP pp
Prestige Stateroom Deck 6	£6645 GBP pp
Prestige Stateroom Deck 5	£6325 GBP pp
Prestige Stateroom Deck 4	£6065 GBP pp
Grand Deluxe Suite	£14095 GBP pp
Deluxe Suite Deck 6	£8915 GBP pp
Deluxe Suite Deck 5	£8915 GBP pp
Deluxe Suite Deck 4	£8915 GBP pp
Deluxe Suite Deck 3	£8915 GBP pp
Deluxe Stateroom	£5555 GBP pp