



The Small Cruise  
Ship Collection

[www.small-cruise-ships.com](http://www.small-cruise-ships.com)

[small-cruise-ships.com](http://small-cruise-ships.com)

[info@small-cruise-ships.com](mailto:info@small-cruise-ships.com)

## FESTIVE HOLIDAYS WITH THE SCENT OF TROPICAL NATURE - CENTRAL AMERICA CRUISE

Experience Christmas in Central America - as rainforests pass by and warm encounters create unforgettable moments, you'll enjoy the festive atmosphere on board at the highest level.



### ITINERARY

Day 1 Colon/Panama, departure 24.00 hrs

Day 2 Relaxation at sea

Day 3 Santa Marta/Colombia, 07.00 - 18.00 hrs

With magnificent beaches and a rich historical heritage, Santa Marta on the coast of Colombia offers the perfect setting for relaxation and all kinds of discoveries. In one of the oldest cities in South America, it is worth taking a stroll through the narrow



The Small Cruise  
Ship Collection

[www.small-cruise-ships.com](http://www.small-cruise-ships.com)

01432 507 280 (within UK)

[info@small-cruise-ships.com](mailto:info@small-cruise-ships.com) | [small-cruise-ships.com](http://small-cruise-ships.com)



streets of the historic centre past colourful colonial architecture. Cafes and restaurants attract visitors to enjoy exotic juice, aromatic coffee and local seafood specialities. A stroll through one of the lively markets promises particularly authentic impressions. In the surrounding area, Tayrona National Park combines lush rainforest and white sandy beaches, while the Sierra Nevada de Santa Marta is famous as the highest coastal mountain range in the world.

**Day 4 Cartagena/Colombia, arrival 08.00 hrs**

A city full of history and zest for life lies on the Caribbean coast of Colombia: Cartagena de Indias, often referred to as one of the most beautiful cities in South America. Founded in 1533, the "queen of Colombia's coast" quickly developed into an important trading centre and is now a modern port with historical charm. Salsa beats, a gentle sea breeze and vibrant colours contribute to the atmosphere. The old town has cobbled streets, colonial buildings and exotic plazas to offer. At Plaza de Bolivar, behind the clock tower called Monumento Torre del Reloj, you can stop to sample local Colombian delicacies. The ship will stay overnight - perfect for enjoying your time to the fullest.

**Day 5 Cartagena/Colombia, departure 14.00 hrs**

**Day 6 Isla Aguja/San Blas Islands/Panama, 08.00 - 18.00 hrs**

Surrounded by crystal-clear water, Isla Aguja in the middle of the San Blas Islands is a paradise on earth. Nature lovers and adventurers will find pristine beaches, lush tropical vegetation and the tranquillity of the largely unspoilt surroundings - a perfect place to escape from everyday life. The colourful underwater world is perfect for snorkelling and diving, and rare bird species sing in the trees: enjoy the beauty of the Caribbean

in its most pristine form.

**Day 7 Daytime passage through the Panama Canal/Panama**

The daytime passage through the Panama Canal is a unique experience that takes visitors right through one of the world's most important engineering masterpieces. With its impressive locks, the canal connects the Atlantic and Pacific oceans and offers spectacular views of the lush tropical landscape. The famous locks of Miraflores and Gatun play a crucial role in the crossing and allow you to directly experience how nature and technology interact in a fascinating way. Sailing through the Panama Canal is more than just a passage - it is an insight into the heart of a global transport network that connects the world more closely together.

**Day 8 Relaxation at sea**

**Day 9 Isla Parida/Chiriqui National Park/Panama, 08.00 - 18.00 hrs**

With its sandy white beaches, crystal-clear waters and lush rainforest, Isla Parida off Panama's Pacific coast is a tropical paradise. It is part of the Gulf of Chiriqui National Marine Park, which is known for its magnificent coral reefs and rich wildlife. Enjoy the peaceful atmosphere of the island to your heart's content just as you wish - whether you prefer to relax and sunbathe or be active with hiking or snorkelling.

**Day 10 Puerto Jimenez/Costa Rica, 08.00 - 18.00 hrs**

In southern Costa Rica, Puerto Jimenez is the gateway to Corcovado National Park, famous for its dense rainforests and beautiful beaches. But the former gold mining town itself also boasts impressive exotic charm, hospitality and tropical surroundings. Perhaps you would like to spend a few relaxing hours on the beach or uncover the secrets of the jungle?



## The Small Cruise Ship Collection

[www.small-cruise-ships.com](http://www.small-cruise-ships.com)



[small-cruise-ships.com](http://small-cruise-ships.com)

[info@small-cruise-ships.com](mailto:info@small-cruise-ships.com)

### Day 11 Quepos/Costa Rica, 08.00 - 18.00 hrs

Quepos is located on the tropical Pacific coast of Costa Rica and is the gateway to the spectacular Manuel Antonio National Park. The region's lush rainforests and wild beaches are home to an impressive array of wildlife: howler monkeys, iguanas and sloths can all be found here and, with a little luck, observed at close range. Between July and November, whales visit the bay - an unforgettable natural spectacle. The town of Quepos itself has a relaxed atmosphere, where local restaurants and bustling markets invite you to while away some time and experience the friendly Costa Rican culture.

### Day 12 Marina Flamingo/Costa Rica, 08.00 - 18.00 hrs

With a tropical atmosphere, turquoise waters and the exclusive amenities of a marina, Marina Flamingo welcomes you to the beach of Bahia Potrero. Enjoy carefree hours under the Costa Rican sun or dive into the colourful underwater worlds of the Pacific Ocean. Nature lovers set off from here on adventures in the surrounding area, observe exotic birds or enjoy boat trips along the coast.

### Day 13 Isla Tortuga/Costa Rica, 06.00 - 17.00 hrs & Puntarenas/Costa Rica, arrival 20.00 hrs

Isla Tortuga - the "Turtle Island" - fulfils tropical holiday dreams with its fine sandy beaches, turquoise-blue water and exotic nature. The uninhabited island is a hotspot for snorkelling enthusiasts. Countless species of fish frolic among colourful coral reefs. Alternatively, relax to your heart's content under palm trees or keep an eye out for monkeys as you go on a hike.

### Day 14 Puntarenas/Costa Rica, departure 18.00 hrs

In western Costa Rica, on the Gulf of Nicoya, Puntarenas invites you to relax, explore and enjoy its lively atmosphere, historic

architecture and authentic gastronomic scene. A stroll along the Malecon waterfront promenade offers wonderful views. Gaze out over the Pacific Ocean and treat yourself to a break in one of the excellent fish restaurants serving ceviche, a regional speciality. The surrounding area offers beautiful beaches and unique nature experiences. Whether you opt for extensive sunbathing or outdoor activities, Puntarenas offers a wide range of opportunities for unforgettable experiences.

### Day 15 Relaxation at sea

### Day 16 Chapera Island/Panama, 10.00 - 18.00 hrs Panama City/Panama, arrival 23.00 hrs

Just a short boat trip from Panama City, Chapera Island is a picturesque idyll that welcomes visitors with its unspoilt beauty. Turquoise-coloured waves gently lap the beaches lined with tropical greenery, creating a laid-back atmosphere that makes everyday life seem very far away. If you want to escape the hustle and bustle of the city, you'll find a place of peace and relaxation here, surrounded by nature and a gentle sea breeze - perfect for unwinding.

### Day 17 Panama City/Panama Overnight stay on board

A fascinating mix of modern elegance and tropical charm awaits visitors to Panama City. The imposing skyline rises above the blue sea, an impressive contrast to the Casco Viejo, the historic old town: colourfully restored buildings and flower-filled courtyards with charming cafes, galleries and squares invite you to while away some time. A walk along the Cinta Costera promenade offers marvellous views of the sea and the city. Vibrant city life combined with exotic flair - Panama City offers an unforgettable urban experience.



The Small Cruise Ship Collection

[www.small-cruise-ships.com](http://www.small-cruise-ships.com)

01432 507 280 (within UK)

[info@small-cruise-ships.com](mailto:info@small-cruise-ships.com) | [small-cruise-ships.com](http://small-cruise-ships.com)



Day 18 Panama City/Panama

Please note:

\* Shore activities are not included in the cruise price and are in the planning stage. Subject to change.



The Small Cruise  
Ship Collection

[www.small-cruise-ships.com](http://www.small-cruise-ships.com)



[small-cruise-ships.com](http://small-cruise-ships.com)

[info@small-cruise-ships.com](mailto:info@small-cruise-ships.com)

## YOUR SHIP: EUROPA

**YOUR SHIP:** Europa

**VESSEL TYPE:**

**LENGTH:**

**PASSENGER CAPACITY:**

**BUILT/REFURBISHED:**

Extensive space for a maximum of 400 guests A crew-to-guest ratio of almost one to one Outside suites only, most with a veranda Five restaurants for the ultimate in culinary indulgence - including THE GLOBE by three-star chef Kevin Fehling Top-class entertainment: experience international artists and experts live on board EUROPA Refresh: new fitness and wellness concepts for even more well-being MS EUROPA is an award-winning luxury cruise ship renowned for setting global standards in refined small-ship cruising. Accommodating a maximum of just 400 guests, the ship offers an intimate and highly personalised experience, supported by an almost one-to-one crew-to-guest ratio. Designed around the concept of casual luxury, EUROPA combines spacious surroundings, attentive service, and elegant all-suite accommodation, with all suites featuring ocean views and most offering private verandas. Onboard, guests can enjoy five exceptional restaurants, including fine dining concepts created in collaboration with acclaimed chefs, alongside world-class entertainment, wellness facilities, and thoughtfully curated enrichment experiences. The ship's smaller size allows access to unique itineraries and exclusive ports beyond the reach of larger vessels, while recent EUROPA Refresh

enhancements have introduced updated fitness and wellness concepts for an even more elevated onboard experience. Blending sophistication, comfort, and flexibility, MS EUROPA delivers a truly premium voyage to destinations



worldwide.

The Small Cruise  
Ship Collection

[www.small-cruise-ships.com](http://www.small-cruise-ships.com)

01432 507 280 (within UK)

[info@small-cruise-ships.com](mailto:info@small-cruise-ships.com) | [small-cruise-ships.com](http://small-cruise-ships.com)



The Small Cruise  
Ship Collection

[www.small-cruise-ships.com](http://www.small-cruise-ships.com)



[small-cruise-ships.com](http://small-cruise-ships.com)

[info@small-cruise-ships.com](mailto:info@small-cruise-ships.com)

## INSIDE YOUR SHIP

Penthouse Deluxe Suite



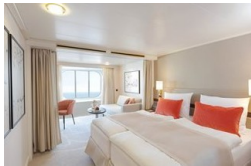
Penthouse Grand Suite



SPA Suite



Suite with panorama window



Veranda Suite Cat. 4-5

Veranda Suite Cat. 6-7



The Small Cruise  
Ship Collection

[www.small-cruise-ships.com](http://www.small-cruise-ships.com)



[small-cruise-ships.com](http://small-cruise-ships.com)

[info@small-cruise-ships.com](mailto:info@small-cruise-ships.com)

## PRICING

17-Dec-2028 to 03-Jan-2029

Suite with panorama window	£7459 GBP pp
Veranda Suite Cat. 4-5	£10389 GBP pp
Veranda Suite Cat. 6-7	£13479 GBP pp
SPA Suite	£14549 GBP pp
Penthouse Deluxe Suite	£23159 GBP pp
Penthouse Grand Suite	£36749 GBP pp