

# The Small Cruise Ship Collection

www.small-cruise-ships.com

small-cruise-ships.com

info@small-cruise-ships.com

## FESTIVE CELEBRATIONS AMIDST IDYLIC SURROUNDINGS - INDIAN OCEAN CRUISE

Turquoise waters, fine sand and lush rainforests - the islands in the Indian Ocean more than live up to their reputation as picture-postcard idylls. Immerse yourself in unique natural surroundings over Christmas and New Year and discover wonders both big and small.



### ITINERARY

Day 1 Port Louis/Mauritius, departure 20.00 hrs

Day 2 Le Port/Reunion/France, 8.00 - 17.00 hrs

The island of Reunion is shaped by an impressive chain of volcanoes, the highest of which, Piton des Neiges and Piton de la Fournaise, stretch high up into the blue sky. The diverse landscape is a paradise for hikers and nature lovers. Thanks to its fascinating biodiversity on land and underwater and the natural beauty of its scenery, the island has been awarded

The Small Cruise Ship Collection

www.small-cruise-ships.com

01432 507 280 (within UK)

info@small-cruise-ships.com | small-cruise-ships.com



## The Small Cruise Ship Collection

[www.small-cruise-ships.com](http://www.small-cruise-ships.com)

[small-cruise-ships.com](http://small-cruise-ships.com)

[info@small-cruise-ships.com](mailto:info@small-cruise-ships.com)

UNESCO World Heritage Site status. A visit to Reunion will be rounded off with a tasting of Creole cuisine, with its impressive variety and intense flavours.

Days 3 - 4 Relaxation at sea

Days 5 - 6 Victoria/Mahe/Seychelles, arrival 17.00 hrs

Victoria, the capital of the Seychelles, exudes relaxed charm - lively and colourful during the day, atmospheric and filled with tropical lightness in the evening. A stroll through the town offers insights into the island of Mahe and its diverse culture. You'll pass the bustling market with its exotic spices and fresh fish and admire the striking clock tower - a relic from the British colonial era - as well as the colourful Hindu temple. The Morne Seychellois nature reserve lies south-west of Victoria. Its 905 m (2,969 ft) high peak of the same name is the highest point in the Seychelles. The national park features dense rainforests and provides spectacular views over Mahe and the surrounding islands. The beaches in the vicinity, including the popular Beau Vallon, are ideal for relaxing and offer perfect conditions for swimming, snorkelling or enjoying the sunset.

Day 7 Victoria/Mahe/Seychelles, departure 06.00 hrs La Digue/Seychelles, 08.00 - 16.00 hrs

La Digue, the fourth largest island in the Seychelles, is legendary for its relaxed atmosphere and imposing granite cliffs: the colossal rounded rocks are particularly impressive at the idyllic Anse Source d'Argent, which is perfect for bathing thanks to its shallow turquoise waters. There are hardly any cars on La Digue and most people use bicycles to get around. It's a great way to explore the island and its hidden wild beaches in the north. In the south of the island is the L'Union Estate, a former plantation estate, which provides insights into the traditional

trades of the island and is home to two extremely rare species of terrapin.

Day 8 Curieuse/Seychelles, 08.00 - 24.00 hrs

Curieuse, the fifth-largest island in the Inner Seychelles, is located very close to its sister island Praslin and is a true natural paradise. The island, which is only about 3 km<sup>2</sup> (1.1 mi.<sup>2</sup>) in size, delights visitors with a diverse mangrove landscape where eight different species grow. Curieuse has been a protected nature reserve and part of the Curieuse Marine National Park for decades. A research station and a rescue and breeding station are dedicated to the conservation of Aldabra giant tortoises. Visitors have the rare opportunity to get up close to these impressive animals in the wild. In the south-west of the island, the historic Doctor's House - once a leper colony, now a museum - tells the eventful history of the island. Look forward to an exclusive destination whose backdrop promises a variety of experiences until late in the evening.

Day 9 Praslin/Seychelles, 07.00 - 18.00 hrs

White sandy beaches lined with palm forests, including Anse Georgette and Anse Lazio, are idyllic picture-perfect spots on Praslin, the second-largest island in the Inner Seychelles. Anse Lazio in particular, surrounded by impressive granite cliffs, is one of the most beautiful beaches in the region. The island's interior is home to Praslin's national park, the UNESCO World Heritage Site Vallee de Mai. This is where the ancient Seychelles coco de mer palm trees, some of which are over 1,000 years old, grow. Together with around 43 other species of plant and rare animals like the black parrot, they form a unique natural paradise.

Days 10 - 12 Relaxation at sea

The Small Cruise Ship Collection

[www.small-cruise-ships.com](http://www.small-cruise-ships.com)

01432 507 280 (within UK)

[info@small-cruise-ships.com](mailto:info@small-cruise-ships.com) | [small-cruise-ships.com](http://small-cruise-ships.com)



## The Small Cruise Ship Collection

[www.small-cruise-ships.com](http://www.small-cruise-ships.com)

[small-cruise-ships.com](http://small-cruise-ships.com)

[info@small-cruise-ships.com](mailto:info@small-cruise-ships.com)

Day 13 Lohifushi (Hudhuranfushi)/North Male Atoll/Maldives, 08.30 - 18.00 hrs

Water sports enthusiasts will find a special Garden of Eden on Lohifushi in the North Male Atoll. While sun worshippers spend the day dreaming on the fine sand and snorkellers observe the underwater world up close in the shallow water, one of the most famous surf waves in the Maldives breaks off the coast. With its snow-white sandy beach and crystal-clear water, the island promises a fantastic day of swimming and a spectacular play of colours.

Day 14 Kuda Finolhu/South Male Atoll/Maldives, 08.00 - 16.00 hrs

Kuda Finolhu welcomes you to the heart of the UNESCO Baa Atoll Biosphere Reserve - an archipelago that unfolds like a tropical work of art in the middle of the Indian Ocean. Here, luxury blends with the magic of virtually untouched nature. Underwater, an extraordinary diversity of species reveals itself - from manta rays to colourful coral reefs. The kilometre-long white sandy beach invites visitors to stroll, relax and enjoy unlimited swimming.

Day 15 Relaxation at sea

Day 16 Hambantota/Sri Lanka, 7.00 - 20.00 hrs

The south coast of Sri Lanka is your gateway to the island's wild side: Hambantota, the centre of the district of the same name, is the perfect base for exploring the impressive wilderness and natural beauties of Sri Lanka. Nearby is Yala National Park, famous for having the highest concentration of leopards in the world and for its fascinating animal kingdom. You can follow in their tracks on a photo safari. Udawalawe National Park around the shores of Udawalawe Reservoir has a large elephant population - in the attached elephant orphanage visitors can

learn interesting facts about these gentle giants. Bundala National Park offers plenty of variety: Around 200 species of bird spend the winter here. In the evening, the city also shows itself from its most beautiful side and invites you to enjoy whiling away some time.

Day 17 Colombo/Sri Lanka, arrival 21.00 hrs Overnight stay on board

Day 18 Colombo/Sri Lanka

Please Note:

\* The shore activities are not included in the cruise price and are in the planning stage. Subject to change.

The Small Cruise Ship Collection

[www.small-cruise-ships.com](http://www.small-cruise-ships.com)

01432 507 280 (within UK)

[info@small-cruise-ships.com](mailto:info@small-cruise-ships.com) | [small-cruise-ships.com](http://small-cruise-ships.com)



## The Small Cruise Ship Collection

[www.small-cruise-ships.com](http://www.small-cruise-ships.com)

[small-cruise-ships.com](http://small-cruise-ships.com)

[info@small-cruise-ships.com](mailto:info@small-cruise-ships.com)

## YOUR SHIP: EUROPA

**YOUR SHIP:** Europa

**VESSEL TYPE:**

**LENGTH:**

**PASSENGER CAPACITY:**

**BUILT/REFURBISHED:**

Extensive space for a maximum of 400 guests A crew-to-guest ratio of almost one to one Outside suites only, most with a veranda Five restaurants for the ultimate in culinary indulgence - including THE GLOBE by three-star chef Kevin Fehling Top-class entertainment: experience international artists and experts live on board EUROPA Refresh: new fitness and wellness concepts for even more well-being MS EUROPA is an award-winning luxury cruise ship renowned for setting global standards in refined small-ship cruising. Accommodating a maximum of just 400 guests, the ship offers an intimate and highly personalised experience, supported by an almost one-to-one crew-to-guest ratio. Designed around the concept of casual luxury, EUROPA combines spacious surroundings, attentive service, and elegant all-suite accommodation, with all suites featuring ocean views and most offering private verandas. Onboard, guests can enjoy five exceptional restaurants, including fine dining concepts created in collaboration with acclaimed chefs, alongside world-class entertainment, wellness facilities, and thoughtfully curated enrichment experiences. The ship's smaller size allows access to unique itineraries and exclusive ports beyond the reach of larger vessels, while recent EUROPA Refresh

enhancements have introduced updated fitness and wellness concepts for an even more elevated onboard experience. Blending sophistication, comfort, and flexibility, MS EUROPA delivers a truly premium voyage to destinations



worldwide.

The Small Cruise Ship Collection

[www.small-cruise-ships.com](http://www.small-cruise-ships.com)

01432 507 280 (within UK)

[info@small-cruise-ships.com](mailto:info@small-cruise-ships.com) | [small-cruise-ships.com](http://small-cruise-ships.com)



The Small Cruise Ship Collection

[www.small-cruise-ships.com](http://www.small-cruise-ships.com)

[small-cruise-ships.com](http://small-cruise-ships.com)

[info@small-cruise-ships.com](mailto:info@small-cruise-ships.com)

## INSIDE YOUR SHIP

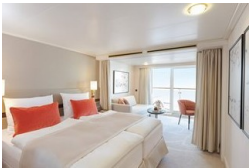
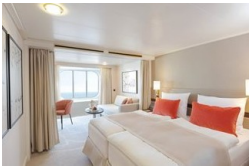
Penthouse Deluxe Suite

SPA Suite



Suite with panorama window

Veranda Suite Cat. 4-5



The Small Cruise Ship Collection

[www.small-cruise-ships.com](http://www.small-cruise-ships.com)

01432 507 280 (within UK)

[info@small-cruise-ships.com](mailto:info@small-cruise-ships.com) | [small-cruise-ships.com](http://small-cruise-ships.com)



# The Small Cruise Ship Collection

[www.small-cruise-ships.com](http://www.small-cruise-ships.com)

[small-cruise-ships.com](http://small-cruise-ships.com)

[info@small-cruise-ships.com](mailto:info@small-cruise-ships.com)

## PRICING

18-Dec-2027 to 03-Jan-2028

Suite with panorama window	£10345 GBP pp
Veranda Suite Cat. 4-5	£11999 GBP pp
Veranda Suite Cat. 6-7	£14695 GBP pp
SPA Suite	£15869 GBP pp
Penthouse Deluxe Suite	£24639 GBP pp