



FAROE ISLANDS, ICELAND, SPITSBERGEN ISLAND HOPPING IN AND AROUND THE ARCTIC

Island adventures Our springtime adventure starts in Bergen, Norway, before sailing to Lerwick in Scotland's Shetland Isles. From there, we travel to the green Faroe Islands, then cross to the north coast of Iceland. We finish our expedition cruise in Longyearbyen after sailing to scenic Spitsbergen in the High Arctic, in all its untouched glory. Keep watch for wildlife The pristine waters and stunning islands on this North Atlantic island-hopping adventure are home to all kinds of wildlife. We'll look out for birds, whales and more along the way. Keep your eyes peeled for the majestic - but elusive - polar bear as we sail the waters near Spitsbergen.



ITINERARY

Day 1 Beginning in Bergen

Explore UNESCO-listed Bryggen and mountain peaks

Your adventure begins in the charming city of Bergen. Surrounded by seven mountains and the sea, Norway's old capital is also one of its most picturesque cities.

If you have time before boarding the ship, why not stroll through



small-cruise-ships.com

info@small-cruise-ships.com

the UNESCO-listed Bryggen district, with its colourful wooden wharfs dating back to the 18th century. Across from Bryggen, you'll find the city's famous fish market.

You can even take the funicular railway to the top of Mount Fløyen for a refreshing hike and amazing views of the city, the mountains and sea beyond.

Day 2 The Shetland Islands

Explore Scotland's northernmost town

Welcome to the Shetland Islands. Lerwick, the capital, is a friendly, Victorian-influenced fishing town set in beautiful scenery.

Navigate the narrow lanes on foot to discover little shops selling local whiskies, woollen sweaters and fudge.

By the old waterfront, you'll find the Shetland Museum, showcasing Pictish carvings and lace shawls. Nearby you can see Fort Charlotte and the regal-looking town hall.

Keep your binoculars handy to scan for grey and common seals along Lerwick's beaches, as well as local birdlife such as Red-throated Divers, redshanks and curlews.

Day 3 10th century Tórshavn

A visit to Streymoy in the Faroe Islands

Tórshavn is located on Streymoy, the largest of the Faroe Islands. Founded by Norsemen in the 10th century, Tórshavn - Thor's Harbour - is one of Northern Europe's oldest capitals.

Wander through the cobbled alleyways and delight in the colourful, turf-roofed houses found here. In the local museums, you can learn about the city's origins and the flora, fauna and geology of the Faroe Islands.

About half a mile out of town, the Svartafoss waterfall tumbles over mossy rocks. And as you walk along the seafront, look out for Eider Ducks and the distinctive Faroese Starling with its beige-tipped wings

Day 4 Peaceful, tiny Elduvík

Surround yourself with the sounds of Faroese nature

Today we'll stop to explore the tiny village of Elduvik, with just 23 inhabitants. Set in the Funningsfjørður inlet in the Faroe Islands. Elduvik is split in two by the river Stora.

While small, Elduvik comes complete with a school, church, dock and pier. From the pier, enjoy the view across the sparkling waters to the nearby island of Kalsoy - it's astonishingly peaceful here.

As you walk through the village's charming streets, listen for the songs of seabirds, bleating sheep, and waves coming to shore from the fjord. You'll notice that the roofs of many houses are



The Small Cruise
Ship Collection

www.small-cruise-ships.com

small-cruise-ships.com

info@small-cruise-ships.com

built in the traditional Icelandic style: covered in grass instead of slate, offering much-needed insulation and protection against the weather.

Day 5 A day at sea

Enjoy a relaxing day as we cruise towards Iceland

As we sail to Bakkagerði, you'll have time to sit back and swap stories of your adventures with your new friends. Keep your eyes peeled while on deck for some wonderful marine life. Or why not relax in a hot tub and watch for seabirds at the same time.

Join the Expedition Team in the Science Center as they set the scene for the next leg of your expedition in northern Iceland. Learn about the island's stunning landscapes, cultures and beliefs.

Day 6 Magical Bakkagerði

Look for elves in natural beauty

Your Iceland cruise continues to Bakkagerði, a tiny, remote settlement. According to folklore, Bakkagerði is inhabited by a large population of local land spirits or elves, known as huldufolk, meaning 'hidden people'. Walk around town to explore this magical place.

The area around Bakkagerði is a popular hiking area. You can join the Expedition Team to walk through lush, green valleys and gorgeous scenery among colourful rhyolite rocks.

The coastal cliffs are home to fulmars, kittiwakes, eiders and puffins. We may also visit the Atlantic Puffin colony on Hafnarholmi - a true gem for nature lovers and wildlife photographers.

Day 7 Whale watching in Húsavík

Iceland's best whale watching spot

Today you'll discover Husavik, a fascinating small town that's one of the best places in the world from which to see whales.

Husavik looks out over Skjalfandi bay, which enjoys visits from humpback and minke whales, white-beaked dolphin, harbour porpoise and even the elusive blue whale. If you're lucky, you might see one or more of these giants at sea. Learn more about them at Husavik's Whale Museum.

The town's Exploration Museum has a section dedicated to space. As Husavik's geology resembles lunar rocks, NASA sent astronauts from their Apollo space missions to train here. You can also enjoy the geothermal waters at Geosea, which overlooks Skjalfandi bay, and refresh with a beer at the local microbrewery.

Day 8 Akureyri and Goðafoss

See dramatic moonscapes and waterfalls

The Small Cruise
Ship Collection

www.small-cruise-ships.com

01432 507 280 (within UK)

info@small-cruise-ships.com | small-cruise-ships.com



The Small Cruise Ship Collection

www.small-cruise-ships.com

small-cruise-ships.com

info@small-cruise-ships.com

Gaze at snowcapped peaks as we cruise along Eyjafjörður, Iceland's longest fjord. It's also known as a great place to spot humpbacks and minke whales, as well as white-beaked dolphins and harbour porpoises.

Iceland's 'Northern Capital', Akureyri, sits at the fjord base. Here, you can enjoy the oasis of a botanical garden, and visit top-notch eateries and museums.

A little further afield, you can witness the picturesque Goðafoss waterfall, where turquoise waters pound against black rocks. You can also keep an eye out for Eider and Harlequin Ducks at Lake Mývatn, one of Iceland's more active volcanic areas.

[Day 9 Relax and learn at sea](#)

Time to relax and discover what adventures lie ahead

As we cross the Arctic Circle and head towards Jan Mayen, you'll enjoy a day at sea. There's plenty to do on board. Scan for marine wildlife from the deck, enjoy the panoramic sauna or soak in a hot tub, or simply relax in the Explorer Lounge & Bar, a great place to read or watch the world glide by.

Visit the Science Center for insights into the destinations ahead on your island-hopping expedition cruise. Enjoy a fascinating lecture from the Expedition Team or help collect important data and contribute to Citizen Science projects.

Photography enthusiasts can pick up some pointers on how to capture wildlife and landscapes from our onboard photographer.

[Day 10 Volcanic Jan Mayen](#)

Visit an active volcano that's a haven for birdlife

Jan Mayen has no permanent residents and visits to the island are rare. In fact, we're one of the few to attempt landings here. If conditions allow, you'll be setting foot in one of Earth's most remote places.

Jan Mayen's surreal, moss- and lichen-streaked landscape is dominated by the Beerenberg volcanic cone. It's the world's northernmost active volcano and last erupted in 1985.

You won't see land mammals here, but the island is designated an Important Bird Area, supporting large populations of Northern Fulmars, Brunnich's Guillemots and Little Auks. Look out for abundant marine life in the surrounding waters too, including whales and seals.

[Day 11 Enjoy a day at sea](#)

A peaceful interlude in your adventure

Spend the day at your leisure as we sail deeper into the Arctic towards the Svalbard archipelago. Savour the quiet moments, simply appreciating the peaceful feeling of being at sea. This is a rare opportunity to disconnect and get a break from the modern world.

Feeling active? You can enjoy a workout in the gym or simply relax in the panoramic sauna while gazing out at the view. As

The Small Cruise Ship Collection
www.small-cruise-ships.com

01432 507 280 (within UK)

info@small-cruise-ships.com | small-cruise-ships.com



ever, our Expedition Team will be on hand to answer any questions you may have and offer insights about these Arctic islands.

Day 12-14 Scenic Spitsbergen

A land of spectacular beauty

Svalbard's largest island Spitsbergen showcases Arctic beauty in its untouched glory; a wilderness of steep mountains, glaciers, and beautiful islands.

Over the next three days, you'll explore some of the world's most dramatic fjords, listening for the creaks of glaciers as they calve icebergs into the sea. Delight in the rare chance to seek the region's apex predator, the magnificent polar bear, in its natural environment following the sea-ice edge hunting for seals.

We'll take advantage of every opportunity to land, taking expedition boats ashore for exploring. If we can, we'll launch our kayaks to enjoy the scenery in near-perfect silence.

Day 15 Longyearbyen

A last day at the top of the world

Your Arctic adventure ends in Longyearbyen, where you'll catch your flight back to Oslo.

You'll return home knowing more about Arctic animals, history, polar ice, and climate change than when you arrived - and with

memories of an incredible experience.

Please note:

Itineraries are subject to change.

The Small Cruise Ship Collection

www.small-cruise-ships.com



small-cruise-ships.com

info@small-cruise-ships.com

YOUR SHIP: SPITSBERGEN

YOUR SHIP:

Spitsbergen

Expedition Passenger Capacity:

335 Built / refurbished: 2009 /

VESSEL TYPE:

2016

LENGTH:

PASSENGER CAPACITY:

BUILT/REFURBISHED:

Completely rebuilt in 2016, the 100 metre MS Spitsbergen features high technical standards as well as comfortable, modern public areas and cabins. The vessel's fresh Scandinavian design reflects a colour palette derived from the sea. She is modern and environmentally progressive, and further improvements that will reduce emissions and fuel consumption even more are in process. The new ship's maneuverability and optimal size make her quite suitable for exploring polar waters of both the Arctic and Antarctica. Spitsbergen has a wide range of facilities including a sauna, fitness centre and hot tub, several bars and restaurants and a panoramic lounge. MS Spitsbergen has an on-board Expedition Team and serves as a university at sea. Interesting lectures inside the ship as well as out on the sun deck make this an exciting and educational journey. Topics depend on the season and the waters we sail in. The Expedition Team host a lecture programme and evening gatherings daily. Out on deck you can participate in live points of interest to learn more about the nature, culture and other phenomena we encounter along the coast. In addition, the Expedition Team will

introduce you to the uniquely Norwegian notion of `friluftsliv` (outdoor life), and encourage you take part in `friluftsliv` hikes and activities during the journey. Ship Facilities Compass Service Centre Brygga bistro Shop Torget main dining Wi-Fi Lift Guest launderette Panoramic deck 8 Outside bar for events,



decks 7 & 8



The Small Cruise
Ship Collection

www.small-cruise-ships.com



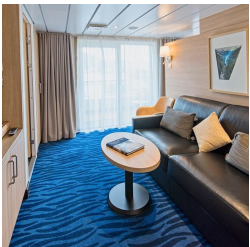
small-cruise-ships.com

info@small-cruise-ships.com

INSIDE YOUR SHIP

Arctic Superior. From

Expedition Suite. From



Polar Inside. From

Polar Outside. From

The Small Cruise
Ship Collection
www.small-cruise-ships.com

01432 507 280 (within UK)

info@small-cruise-ships.com | small-cruise-ships.com



The Small Cruise Ship Collection

www.small-cruise-ships.com



small-cruise-ships.com

info@small-cruise-ships.com

PRICING

16-May-2027 to 30-May-2027

Expedition Suite. From	£9195 GBP pp
Arctic Superior. From	£7575 GBP pp
Polar Inside. From	£5409 GBP pp
Polar Outside. From	£6329 GBP pp



The Small Cruise Ship Collection

www.small-cruise-ships.com

01432 507 280 (within UK)

info@small-cruise-ships.com | small-cruise-ships.com