

The Small Cruise Ship Collection

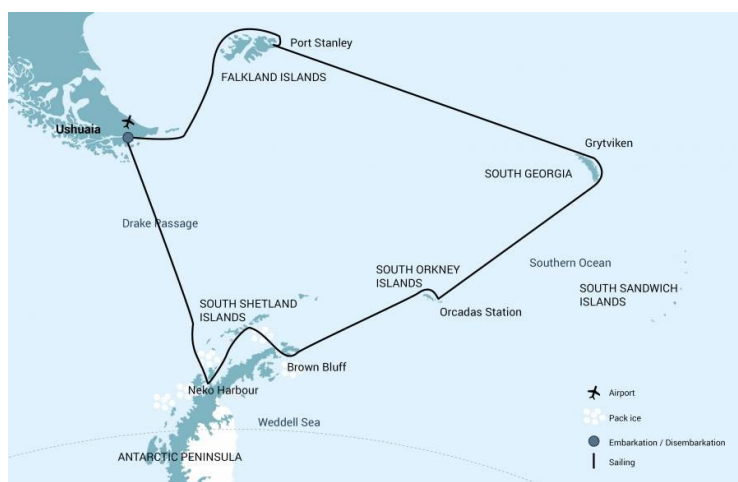
www.small-cruise-ships.com

small-cruise-ships.com

info@small-cruise-ships.com

FALKLANDS, SOUTH GEORGIA AND ANTARCTICA CRUISE

This Falkland Islands, South Georgia, and Antarctic Peninsula cruise is an animal-lover's dream come true. The expedition explores one of the last untamed areas on Earth - a land of ruggedly beautiful landscapes and amazingly varied wildlife. This iconic cruise visits major wildlife hotspots, some great historical locations and all the while enjoys the majesty of the extraordinary land and seascapes of the southern ocean: Vast icebergs, snow clad mountains, glaciers, rocky outcrops, extinct volcanoes, dramatic islands, winswept beaches and, in the Weddell Sea, probably the edge of the icepack. If you only ever undertake 1 cruise to Antarctica, the 'FSG' (Falklands, South Georgia and Antarctic Peninsula cruise) should be the one. Please Note: 1 Nov 2020 departure is 21 days long, it starts in Puerto Madryn and ends in Ushuaia. Fare includes All meals throughout the voyage aboard the ship including snacks, coffee and tea. All shore excursions and activities throughout the voyage by Zodiac. Program of lectures by noted naturalists and leadership by experienced expedition staff. Free use of rubber boots and snowshoes Luggage transfer from pick-up point to the vessel on the day of embarkation, in Ushuaia. Pre-scheduled group transfer from the vessel to the airport in Ushuaia (directly after disembarkation). All miscellaneous service taxes and port charges throughout the program. AECO fees and governmental taxes. Comprehensive pre-departure material.



ITINERARY

Day 1: End of the world, start of a journey

Your voyage begins where the world drops off. Ushuaia, Argentina, reputed to be the southernmost city on the planet, is located on the far southern tip of South America. Starting in the afternoon, you embark from this small resort town on Tierra del Fuego, nicknamed "The End of the World," and sail the mountain-fringed Beagle Channel for the remainder of the evening.

The Small Cruise Ship Collection
www.small-cruise-ships.com

01432 507 280 (within UK)

info@small-cruise-ships.com | small-cruise-ships.com



Day 2: The winged life of the westerlies

Several species of albatross follow the vessel into the westerlies, along with storm petrels, shearwaters, and diving petrels.

Day 3: Finding the Falklands

The Falkland (Malvinas) Islands offer an abundance of wildlife that is easily approachable, though caution is always advised. These islands are largely unknown gems, the site of a 1982 war between the UK and Argentina. Not only do various species of bird live here, but chances are great you'll see both Peale's dolphins and Commerson's dolphins in the surrounding waters. During this segment of the voyage, you may visit the following sites: Carcass Island - Despite its name, this island is pleasantly rodent-free and hence bounteous with birdlife. Anything from breeding Magellanic penguins and gentoos to numerous waders and passerine birds (including Cobb's wrens and tussock-birds) live here. Saunders Island - On Saunders Island you can see the black-browed albatross and its sometimes-clumsy landings, along with breeding imperial shags and rockhopper penguins. King penguins, Magellanic penguins, and gentoos are also found here.

Day 4: The seat of Falklands culture

The capital of the Falklands and center of its culture, Port Stanley has some Victorian-era charm: colorful houses, well-tended gardens, and English-style pubs are all to be found here. You can also see several century-old clipper ships nearby,

silent witnesses to the hardships of 19th century sailors. The small but interesting museum is also worth a visit, covering the early days of settlement up to the Falklands War. Approximately 2,100 people live in Port Stanley. Feel free to wander at will, though be aware that admission fees to local attractions are not included in the voyage.

Day 5 - 6: Once more to the sea

En route to South Georgia, you now cross the Antarctic Convergence. The temperature cools considerably within the space of a few hours, and nutritious water rises to the surface of the sea due to colliding water columns. This phenomenon attracts a multitude of seabirds near the ship, including several species of albatross, shearwaters, petrels, prions, and skuas.

Day 7 - 10: South Georgia Journey

Today you arrive at the first South Georgia activity site. Please keep in mind that weather conditions in this area can be challenging, largely dictating the program. Over the next several days, you have a chance to visit the following sites: Prion Island - This location is closed during the early part of the wandering albatross breeding season (November 20 - January 7). From January on, the breeding adults have found their partners and are sitting on eggs or nursing their chicks. Enjoy witnessing the gentle nature of these animals, which possess the largest wingspan of any birds in the world. Fortuna Bay - Near beaches inhabited by various penguins and seals, you have the chance to follow the final leg of Shackleton's route to the abandoned whaling village of Stromness. This path cuts across the



mountain pass beyond Shackleton's Waterfall, and as the terrain is partly swampy, be prepared to cross a few small streams. Salisbury Plain, St. Andrews Bay, Gold Harbour - These sites not only house the three largest king penguin colonies in South Georgia, they're also three of the world's largest breeding beaches for Antarctic fur seals. Literally millions breed on South Georgia during December and January. Only during the mid-season do they peak in their breeding cycle. Watch the large bulls keep a constant vigil (and occasionally fight) over territories where dozens of females have just given birth or are about to deliver. Watch your step and stay cool when walking the beaches during this time. Grytviken - In this abandoned whaling station, king penguins walk the streets and elephant seals lie around like they own the place - because they basically do. Here you might be able to see the South Georgia Museum as well as Shackleton's grave.

Day 11: Southward bound

There may be sea ice on this route, and at the edge of the ice some south polar skuas and snow petrels could join the other seabirds trailing the vessel south.

Day 12: The scenic vistas of South Orkney

Depending on the conditions, you might visit Orcadas Base, an Argentine scientific station on Laurie Island in the South Orkney archipelago. The personnel here will happily show you their facility, where you can enjoy expansive views of the surrounding glaciers. If a visit isn't possible, you may instead land in Signy Island's Shingle Cove.

Day 13: Last push to the Antarctic

Enormous icebergs and a fair chance of fin whale sightings ensure there's never a dull moment on this last sea voyage south. Also, your best chance to spot Antarctic petrels is here.

Day 14 - 16: Awe-inspiring Antarctica

If the ice conditions permit, you now sail into the Weddell Sea. Here colossal tabular icebergs herald your arrival to the eastern side of the Antarctic Peninsula. Paulet Island, with its large population of Adelie penguins, is a possible stop. You might also visit Brown Bluff, located in the ice-clogged Antarctic Sound, where you could get the chance to set foot on the Antarctic Continent itself. If conditions aren't favorable to enter the Weddell Sea from the east, the ship will set course for Elephant Island and head into the Bransfield Strait, between South Shetland Island and the Antarctic Peninsula. Here you can attempt to access the Antarctic Sound from the northwest. The breathtaking scenery continues in the southern Gerlache Strait, and if ice conditions allow, we may even reach Lemaire Channel. Conditions on the Drake Passage determine the exact time of departure.

Day 17 - 18: Familiar seas, familiar friends

Your return voyage is far from lonely. While crossing the Drake, you're again greeted by the vast array of seabirds remembered from the passage south. But they seem a little more familiar to you now, and you to them.



Day 19: There and back again

Every adventure, no matter how grand, must eventually come to an end. It's now time to disembark in Ushuaia, but with memories that will accompany you wherever your next adventure lies.

Please Note:

All itineraries are for guidance only. Programs may vary depending on local ice, weather, and wildlife conditions. The on-board expedition leader will determine the final itinerary. Flexibility is paramount for expedition cruises.



The Small Cruise Ship Collection

www.small-cruise-ships.com

small-cruise-ships.com

info@small-cruise-ships.com

YOUR SHIP: HONDIOUS

YOUR SHIP:

Hondius

VESSEL TYPE:

LENGTH:

PASSENGER CAPACITY:

BUILT/REFURBISHED:

Hondius is the first-registered Polar Class 6 vessel in the world, meeting the latest and highest Lloyd's Register demands for ice-strengthened cruise vessels. Hondius also exceeds the requirements of the Polar Code as adopted by the International Maritime Organization (IMO), allowing you to enjoy the polar regions as much as possible while impacting them as little as possible. Upon completion, Hondius will be the most flexible, advanced, innovative ice-strengthened vessel in the polar regions. It is optimized for exploratory voyages that provide you the utmost first-hand contact with the Arctic and Antarctica. Hotel comfort, expedition class Hondius offers high-quality accommodation for 176 passengers in a range of suites and cabins. The spacious 'Hondius' suite (35 square metres, 377 square feet), six grand suites with balconies (27 square metres, 291 square feet), eight junior suites (19 to 20 square metres, 205 to 215 square feet), eight superior cabins (20 to 21 square metres, 215 to 226 square feet), 11 twin deluxe cabins, (19 to 21 square metres, 205 to 226 square feet), 14 twin window cabins (12 to 14 square metres, 129 to 151 square feet) as well as 28 twin porthole cabins, two triple porthole cabins, and four quadruple porthole cabins that vary in size from 12 to 18

square metres, or 129 to 194 square feet all offer a high level of accommodation. The passenger capacity certificate for Hondius is 196 persons. One deck consists of a large observation lounge and separate lecture room, which are reserved for a wide variety of interactive workshops, exhibitions, and performances particular to Hondius. Though elegantly designed in stylish mid-century modern decor, this vessel holds true to Oceanwide's distinctive cozy and informal atmosphere. Swift & safe ship-to-shore operations. It is the philosophy of Hondius' managers to keep sea time as short as possible so that they can focus instead on fast, effective access to shore and near-shore activities. To give you the maximum contact with the nature and wildlife you traveled so far to see, they employ a tough fleet of rigid-hull inflatable Zodiac boats that guarantee swift and safe landing operations for all passengers at the same time. Hondius has two separate gangways and a sheltered indoor Zodiac embarkation platform that can also be used for special outdoor activities, such as kayaking. The fast, flexible, friendly heart of the polar regions. The top priority is taking advantage of every wildlife and terrain opportunity as it occurs. To keep the itineraries flexible itineraries and the response time rapid, Hondius is equipped with advanced stabilizers and two main engines capable of powering the vessel up to 15 knots. But Hondius sacrifices no warmth to achieve its keen polar edge: You will have 72 crew and staff members (including expedition and hotel staff) at your service while on board, ensuring that what little time you do spend on the ship you will spend comfortably

The Small Cruise
Ship Collection
www.small-cruise-ships.com

01432 507 280 (within UK)

info@small-cruise-ships.com | small-cruise-ships.com



The Small Cruise Ship Collection

www.small-cruise-ships.com



small-cruise-ships.com

info@small-cruise-ships.com



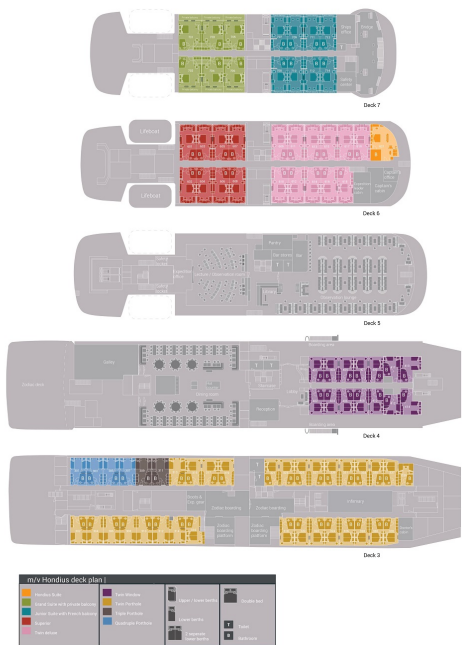
entertained.

The Small Cruise
Ship Collection

www.small-cruise-ships.com

small-cruise-ships.com
info@small-cruise-ships.com

INSIDE YOUR SHIP



Grand Suite with Private Balcony Junior Suite



Quadruple Porthole

Superior



Triple Porthole
Twin Porthole

Twin Deluxe
Twin Window



The Small Cruise Ship Collection

www.small-cruise-ships.com

small-cruise-ships.com

info@small-cruise-ships.com

PRICING

27-Nov-2025 to 15-Dec-2025

Twin Deluxe	£15400 GBP pp
Triple Porthole	£13552 GBP pp
Superior	£16478 GBP pp
Twin Window	£14168 GBP pp
Quadruple Porthole	£11396 GBP pp
Twin Porthole	£13552 GBP pp

11-Dec-2025 to 29-Dec-2025

Twin Deluxe	£15400 GBP pp
Triple Porthole	£13552 GBP pp
Superior	£16478 GBP pp
Twin Window	£14168 GBP pp
Quadruple Porthole	£11165 GBP pp
Twin Porthole	£13552 GBP pp

21-Dec-2025 to 08-Jan-2026

Twin Window	£15284 GBP pp
Triple Porthole	£13475 GBP pp
Junior Suite	£18826 GBP pp
Twin Porthole	£14746 GBP pp
Twin Deluxe	£16670 GBP pp
Grand Suite with Private Balcony	£21637 GBP pp
Superior	£17864 GBP pp
Quadruple Porthole	£12012 GBP pp

19-Jan-2026 to 06-Feb-2026

Quadruple Porthole	£12782 GBP pp
Triple Porthole	£15670 GBP pp
Superior	£18788 GBP pp
Twin Window	£16208 GBP pp
Twin Porthole	£15670 GBP pp
Twin Deluxe	£17633 GBP pp

28-Jan-2026 to 16-Feb-2026

Triple Porthole	£14514 GBP pp
Twin Porthole	£15785 GBP pp
Quadruple Porthole	£13013 GBP pp
Twin Deluxe	£17748 GBP pp
Junior Suite	£20290 GBP pp
Twin Window	£16324 GBP pp
Superior	£18904 GBP pp
Grand Suite with Private Balcony	£22600 GBP pp



The Small Cruise Ship Collection

www.small-cruise-ships.com

01432 507 280 (within UK)

info@small-cruise-ships.com | small-cruise-ships.com



The Small Cruise Ship Collection

www.small-cruise-ships.com



small-cruise-ships.com

info@small-cruise-ships.com

PRICING

23-Nov-2026 to 11-Dec-2026

Twin Porthole	£14130 GBP pp
Quadruple Porthole	£11588 GBP pp
Superior	£17094 GBP pp
Triple Porthole	£14130 GBP pp
Twin Window	£14784 GBP pp
Twin Deluxe	£16324 GBP pp

11-Dec-2026 to 29-Dec-2026

Quadruple Porthole	£11588 GBP pp
Twin Window	£14784 GBP pp
Twin Porthole	£14130 GBP pp
Triple Porthole	£14130 GBP pp
Superior	£17094 GBP pp
Twin Deluxe	£16324 GBP pp

27-Dec-2026 to 14-Jan-2027

Twin Porthole	£14130 GBP pp
Triple Porthole	£14130 GBP pp
Superior	£17094 GBP pp
Twin Deluxe	£16324 GBP pp
Twin Window	£14784 GBP pp
Quadruple Porthole	£11588 GBP pp

16-Jan-2027 to 03-Feb-2027

Grand Suite with Private Balcony	£24140 GBP pp
Quadruple Porthole	£13321 GBP pp
Triple Porthole	£14938 GBP pp
Twin Porthole	£16440 GBP pp
Twin Window	£17094 GBP pp
Twin Deluxe	£18788 GBP pp
Superior	£19828 GBP pp
Junior Suite	£21060 GBP pp



The Small Cruise Ship Collection

www.small-cruise-ships.com

01432 507 280 (within UK)

info@small-cruise-ships.com | small-cruise-ships.com