

The Small Cruise Ship Collection

www.small-cruise-ships.com

small-cruise-ships.com

info@small-cruise-ships.com

FALKLAND ISLANDS (MALVINAS) CRUISE

Discover one of the South Atlantic's most wildlife-rich archipelagos on this 10-day expedition to the Falkland Islands (Malvinas), sailing aboard a small expedition ship designed for remote exploration. Departing from Ushuaia, Argentina, this journey combines dramatic coastal landscapes, thriving penguin colonies, and encounters with island communities that preserve a deep connection to their environment. From windswept cliffs to white-sand beaches and rolling green hills, the Falklands offer a rare balance of raw nature and human history. Each landing is shaped by weather and wildlife conditions, allowing our Expedition Team to adapt the route in search of the most meaningful experiences.



ITINERARY

Day 1 Ushuaia, Embarkation

Your journey begins in Ushuaia, Argentina. Board your small ship and set sail along the scenic Beagle Channel, charting a course toward the Falkland Islands.

Important note: Boarding in Ushuaia is exclusively between

The Small Cruise Ship Collection

www.small-cruise-ships.com

01432 507 280 (within UK)

info@small-cruise-ships.com | small-cruise-ships.com



The Small Cruise Ship Collection

www.small-cruise-ships.com

small-cruise-ships.com

info@small-cruise-ships.com

15:00 hrs (3:00 PM) and 16:00 hrs (4:00 PM). At 16:00 hrs (4:00 PM), boarding will close. Please be on time. Keep your passport in hand and allow enough time to clear port security and reach the vessel.

Day 2 At Sea

As we journey across open waters, enjoy boutique amenities on board and join our expert lectures and presentations.

Day 3 New Island, Carcass Island

Weather permitting, the morning might bring us to New Island, one of the Falklands' most remote and visually striking locations, rich in wildlife. Towering cliffs and grassy slopes may host colonies of southern rockhopper penguins, imperial shags, and black-browed albatross. In the afternoon, we visit Carcass Island, a picturesque haven known for its rolling hills, sandy beaches, and sheltered bays. This wildlife-rich destination offers excellent opportunities to spot gentoo and Magellanic penguins, along with a variety of native bird species such as tussac birds and striated caracaras. Its tranquil setting and vibrant flora make it a favorite for photography and nature walks.

Day 4 Steeple Jason Island, Saunders Island

If weather and sea conditions permit, we might land on the remote and dramatic Steeple Jason Island, known for hosting the world's largest colony of black-browed albatross. Rockhopper penguins and imperial shags also share the rugged cliffs. In the afternoon, we enjoy a long white-sand beach while we visit Saunders Island. A true wilderness experience, the main attractions begin with the majestic king penguins, often seen along the shoreline or mingling among other species. You'll also encounter rockhopper penguins, nesting black-browed albatross, and sub-Antarctic gentoo penguins, creating an

unforgettable wildlife spectacle.

Day 5 Volunteer Point, Port Stanley

In the morning, if weather conditions allow, we visit Volunteer Point, a remote and spectacular location that hosts the largest King penguin colony in the Falklands, with over 1,000 breeding pairs. Here, majestic Kings share the beach with gentoo and magellanic penguins, creating one of the most iconic wildlife experiences in the South Atlantic. In the afternoon, our journey continues with a call at Port Stanley, the capital of the Falklands. Join guided walking tours or wander independently to discover the town's charming pubs, historic sites, maritime museum, and souvenir shops. A stroll along Ross Road offers views of poignant war memorials and everyday island life.

Day 6 Bleaker Island, Sea Lion Island

In the morning, we explore Bleaker Island, home to abundant coastal birdlife and colonies of gentoo, rockhopper, and magellanic penguins. The island's flat terrain and wide beaches provide excellent conditions for photography and relaxed exploration. In the afternoon, weather allowing, we continue to Bull Point on East Falkland, where windswept dunes and wild coastlines host elephant seals, sea lions, and nesting seabirds.

Don't miss the sunset as we transit the Falkland Sound, a magical moment on the journey.

Day 7 Pebble Island, Keppel Island

Our morning includes a landing on Pebble Island, noted for its varied terrain and prolific birdlife. Later, on Keppel Island, we'll discover traces of a historic mission of settlement and opportunities to spot upland geese, caracaras, and other native species along gentle trails.



The Small Cruise Ship Collection

www.small-cruise-ships.com

small-cruise-ships.com

info@small-cruise-ships.com

Day 8 West Point Island

In the morning, we visit West Point Island, a remote gem known for its dramatic coastal scenery and rich birdlife. An easy hike takes you to a spectacular colony of black-browed albatross and rockhopper penguins, perched on rugged cliffs overlooking the sea. This is one of the Falklands' most iconic wildlife encounters, complemented by a warm welcome and a traditional Falklands tea experience in this charming and secluded setting. In the afternoon, we set sail northward, reflecting on the unforgettable wildlife encounters and scenic vistas.

Day 9 At Sea

Enjoy the ship's hospitality as we make our way back to South America.

Day 10 Ushuaia, Disembarkation

Arrival and disembarkation in Ushuaia.

Please note:

Itineraries are subject to change.



The Small Cruise
Ship Collection

www.small-cruise-ships.com

01432 507 280 (within UK)

info@small-cruise-ships.com | small-cruise-ships.com

The Small Cruise Ship Collection

www.small-cruise-ships.com

small-cruise-ships.com

info@small-cruise-ships.com

YOUR SHIP: MAGELLAN EXPLORER

YOUR SHIP:

Magellan Explorer

VESSEL TYPE:

LENGTH:

PASSENGER CAPACITY:

BUILT/REFURBISHED:

MV Magellan Explorer features 50 passenger suites and cabins in five categories of accommodation, including dedicated single cabins. The cabins are very spacious, ranging in size from 40 m² (440 sq. ft.) to 20 m² (220 sq. ft.). All double cabins have two twin beds that can be configured as one queen-size bed, offering great flexibility to our guests. 42 cabins feature a large window and a private balcony, while 8 cabins feature a porthole. All cabins feature a private bathroom and a sitting area. Public areas include a large, forward-facing observation lounge, an observation deck, a dining room that accommodates all guests and expedition staff in a single sitting, two meeting rooms, a gift shop, a protected outdoor barbecue area, a gym, and a sauna. The bow of the ship is accessible to guests to offer expansive views during exploration. Optional adventure activities, such as kayaking and snowshoeing, are available. Specific measures have been taken to minimize MV Magellan Explorer's carbon footprint, including state-of-the-art engines that meet MARPOL's stringent Tier III emission standards. To minimize fuel consumption, a waste heat recovery system recycles the heat produced by the ship's engines and repurposes it to power the ship's heating system and to warm

the water used on board.





The Small Cruise Ship Collection

www.small-cruise-ships.com



small-cruise-ships.com

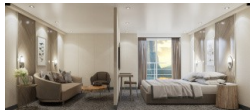
info@small-cruise-ships.com

INSIDE YOUR SHIP

Deluxe Veranda Cabin PH Suite



Porthole Cabin Suite



Triple Suite Veranda Cabin



The Small Cruise Ship Collection

www.small-cruise-ships.com

01432 507 280 (within UK)

info@small-cruise-ships.com | small-cruise-ships.com



The Small Cruise Ship Collection

www.small-cruise-ships.com



small-cruise-ships.com

info@small-cruise-ships.com

PRICING

04-Apr-2028 to 13-Apr-2028

Suite	£11549 GBP pp
PH Suite	£7315 GBP pp
Deluxe Veranda Cabin	£6159 GBP pp
Veranda Cabin	£5775 GBP pp
Porthole Cabin	£5235 GBP pp
Triple Suite	£5005 GBP pp



The Small Cruise Ship Collection

www.small-cruise-ships.com

01432 507 280 (within UK)

info@small-cruise-ships.com | small-cruise-ships.com