

The Small Cruise Ship Collection

www.small-cruise-ships.com

small-cruise-ships.com

info@small-cruise-ships.com

EXTENDED ANTARCTIC CIRCLE CROSSING CRUISE

Set sail for an adventure like no other. Spend 14 days following in the wake of Captain Cook as you cross the Antarctic Circle, home to the midnight sun and towering icebergs. On board the well-appointed Ocean Nova, leave Ushuaia and civilisation behind and journey towards the hauntingly beautiful icy wilderness of the Antarctic Continent. Experience the thrill of witnessing seals lie on ice floes, whales breaching the frigid waters and penguins patrolling the rocky shoreline in vast numbers. Enjoy jaw-dropping views witnessed by seldom few as you explore ice-filled bays by Zodiac, landing on Antarctica itself for onshore excursions. Set sail to the Antarctic Circle and experience nearly endless daylight during the high summer as you journey further south, uncovering the remoteness and untouched beauty of this less-visited part of the Antarctic Peninsula. Soak up the beauty of this wild place and take advantage of the extra days on the Antarctic Peninsula with this extended expedition. Enjoy more landings, visit more locations and have additional opportunities to witness Antarctica's breathtaking wildlife and landscapes. Gain insight from onboard polar experts who will cover a range of fascinating topics during their daily lectures, from the diverse wildlife to the unique geology of the region. Look for gentoo and chinstrap penguins, fur and Weddell seals, albatrosses and more, all set against the backdrop of towering icebergs and glaciated mountains. Take part in Citizen Science Projects and contribute to meaningful research by photographing whale flukes for Happy Whale, who help to track and identify individual whales across the oceans. The weather plays a pivotal part in this adventure and, although there's an itinerary in place, there are no guarantees that you'll

be able to do everything that is planned. A level of flexibility and openness to embracing the unexpected are important in expedition travel, especially in such a remote area like the Antarctic. There are nearly 200 recognised sites in the Antarctic Peninsula and South Shetlands and the places mentioned in the itinerary may need to be changed to other locations - which are just as interesting and beautiful! We may also be confined to the ship during rough weather, but there are plenty on onboard resources and activities. The ship's library and educational lectures are ideal ways to stay entertained, while the wellness spa, saunas, gym and yoga classes will keep you fresh for when the



**Exact landing sites may differ depending on weather and wildlife-spotting opportunities*

weather clears.

ITINERARY

Day 1. Ushuaia

The Small Cruise Ship Collection

www.small-cruise-ships.com

01432 507 280 (within UK)

info@small-cruise-ships.com | small-cruise-ships.com



The Small Cruise Ship Collection

www.small-cruise-ships.com

small-cruise-ships.com

info@small-cruise-ships.com

Welcome to Ushuaia - the gateway to Antarctica. Located at the southern tip of Argentina, these parts are known as Tierra del Fuego, often called 'The End of the World', but this is just the beginning of your Antarctic adventure. Those with a day or two may want to head to Tierra del Fuego National Park on a full day's adventure, or if you've only got a few hours to kill, why not stroll around town and visit the waterfront overlooking the Beagle Channel. You might also like to sample some handcrafted chocolate at a local cafe in town. Tonight, you'll have a welcome meeting at about 5 pm at your hotel, then you're free to get ready for an early morning tomorrow!

Hotel for the night

Day 2. Embark in Ushuaia

Enjoy some free time to explore Ushuaia and the surrounding area before boarding the Ocean Nova - your home for the next 12 nights. Today, your ship will make its way through the Beagle Channel towards the infamous Drake Passage. Named after Charles Darwin's historic ship, 'The Beagle', the deep open water of the channel presents many great photo opportunities. Be sure to wave goodbye to South America if you're not too busy snapping away at the incredible landscapes - your next land sighting will be the Antarctic Peninsula and the South Shetland Islands.

Days 3-4. Drake Passage

The Drake Passage is one of the planet's most famous bodies of water. It can be rough, but if weather conditions are reasonable, you can head out on the outer decks to spot ocean dwellers like whales, dolphins or seabirds, including the wandering albatross, prions and petrels. Over the next two days, you'll get to know your Expedition Team as your comprehensive lecture program

gets underway.

Your polar experts will share their knowledge of the Antarctic region so you can understand its wildlife, history and geology and help prepare you for the adventure. Your Expedition Team consists of experts on the marine and bird life that inhabits these parts. They will help you scout for sightings as you join them on the outer decks. Step onto the ship's bridge and take advantage of our open bridge policy, inviting you into Ocean Nova's command centre. This is your chance to observe the captain and the expedition in progress from an ideal viewpoint for spotting wildlife.

Days 5-8. South Shetland Islands and Antarctic Peninsula

Over the next few days, you'll make Zodiac cruises through the icy waters. There are several potential landing sites, and while weather dictates which specific site you'll land at, each presents an opportunity to get up close with some incredible wildlife. Look out for chinstrap, gentoo and Adelie penguin colonies as well as crabeater, Weddell, fur and elephant seals. When you are on board the Ocean Nova, your Expedition Team will keep the education going with a range of wildlife and history presentations and documentary screenings. A typical expedition day begins with a wake-up call from your Expedition Leader around 7 am, followed by breakfast.

Weather permitting, you can anticipate at least two excursions daily, providing ample opportunities to take in the breathtaking Antarctic landscape. For those who crave even more adventure, treat yourself to an optional paddling excursion that offers a new perspective of this frozen expanse. You'll also be able to take a polar plunge off the Ocean Nova. There's nothing like a quick dip in the Antarctic's icy depths to wake you up!

The Small Cruise Ship Collection
www.small-cruise-ships.com

01432 507 280 (within UK)

info@small-cruise-ships.com | small-cruise-ships.com



The Small Cruise Ship Collection

www.small-cruise-ships.com

small-cruise-ships.com

info@small-cruise-ships.com

Days 9-10. Antarctic Circle

Weather and ice conditions permitting, you'll celebrate reaching the latitude of 66°33'S and crossing the fabled Antarctic Circle. Toast to the sheer rawness of the surroundings and take it all in - while not a typical landing, the crossing of the Antarctic Circle leaves a lasting memory. Travel past colossal icebergs to a point on Earth where only a few travellers have sailed. Home to Weddell seals that are specially adapted to this icy environment, they use their canines and incisors to rasp open new ice and maintain holes in the ice through which to breathe. They also have highly accurate powers of navigation, enabling them to seek out breathing holes when their teeth are worn down, and they can no longer maintain or create breathing holes in the ice.

Day 11. South Shetland Islands and Antarctic Peninsula

As the Ocean Nova begins heading north, you'll be more familiar with the Antarctic waters. Test your newfound knowledge of penguin species and fine-tune your wildlife spotting skills as you differentiate between fur, leopard and Weddell seals. Zodiac cruises and landings will continue to ensure you make the most of the peninsula's wildlife opportunities and capture the perfect photographs.

Days 12-13 Drake Passage

The journey's final leg offers an opportunity to reflect on the spectacular scenery and prolific encounters. During the final days at sea, join additional onboard lectures and view a slideshow featuring captivating images captured by our Expedition Photographer throughout your journey--yours to keep as a cherished reminder of your incredible Antarctic expedition. By the evening of Day 13, you'll enter the relatively calm waters of the Beagle Channel, signalling the start of your return home. That evening, enjoy a final celebration with your fellow travellers

and Expedition Team to mark the end of this Antarctic adventure.

Day 12. Disembark in Ushuaia

After breakfast, disembark the Ocean Nova as your Antarctic expedition ends. A morning transfer to Ushuaia Airport or downtown is included, but if you'd like to extend your stay, just speak to your booking agent ahead of time.

****Special information****

On the day you disembark in Ushuaia, we recommend scheduling your flights for departure after 12 noon to allow for any potential delays due to weather conditions.

On this day, we've got your transfers covered! Choose between a morning transfer from the port to Ushuaia airport for your onward flight or a morning transfer from the port to Ushuaia downtown. Enjoy complimentary luggage storage for the day. If you plan to head to the airport at a later time or to your Ushuaia accommodation, it's entirely up to you and at your own expense.

The Small Cruise
Ship Collection

www.small-cruise-ships.com

01432 507 280 (within UK)

info@small-cruise-ships.com | small-cruise-ships.com



The Small Cruise Ship Collection

www.small-cruise-ships.com

small-cruise-ships.com

info@small-cruise-ships.com

YOUR SHIP: OCEAN NOVA

YOUR SHIP: Ocean Nova

VESSEL TYPE:

LENGTH:

PASSENGER CAPACITY:

BUILT/REFURBISHED:

The ice-strengthened 73 metre long expedition ship Ocean Nova was built in Denmark in 1992 with high ice class to serve Greenland's west coast. In 2004 to 2005 she was completely refurbished and has now a career as a small and comfortable expedition ship. The Ocean Nova can accommodate 86 passengers (but is often limited to 65 - 80 for some cruises) in single, double and triple cabins, all with sea-view and private facilities. The double cabins have either twin beds. The triple cabins have upper and lower beds. In your cabin you will also find a desk with chair and ample storage space for clothes and equipment. In the dining room you are treated to delicious meals in between landings and in the panorama lounge you can enjoy a drink with a breathtaking view of the surrounding polar landscape. This is where on board specialists entertain and educate you with lectures on polar biology, history, geology and conservation. There is also a library with panoramic views and a good selection of polar books. On board there is a satellite phone, gym and medical doctor. Passengers are welcome on the bridge around the clock and there is always something to see or search for from the spacious observation decks. The ship has North European officers and there is a friendly and informal

atmosphere on board. Travelling with this small expedition ship offers an entirely different experience and perspective than you can get on a larger and more conventional cruise ship. Cabins are spread over two decks and include cabins for the single traveller, double and triple cabins, all with sea-view and private facilities. The comfortable dining room located on the Upper deck seats all passengers in a single sitting and offers delicious meals with a mixture of table service and buffet. The informal dining arrangement adds to the friendly atmosphere onboard and meals are a great chance to discuss all you have seen with your fellow travellers, and for the expedition team to share their knowledge. With one of the highest ice classes (1B) and a 2000 hp diesel engine, Ocean Nova is a small but sturdy expedition vessel just as at home in the icy waters of Svalbard as she is in a tranquil Scottish loch. The ship has a crew of 34, including North European officers, whose prime concern is your safety as well as ensuring wildlife sightings and weather conditions are maximised. For your safety there are two fully enclosed lifeboats and a medical

The Small Cruise Ship Collection
www.small-cruise-ships.com

01432 507 280 (within UK)

info@small-cruise-ships.com | small-cruise-ships.com



The Small Cruise Ship Collection

www.small-cruise-ships.com



small-cruise-ships.com

info@small-cruise-ships.com



clinic onboard.



The Small Cruise Ship Collection

www.small-cruise-ships.com

01432 507 280 (within UK)

info@small-cruise-ships.com | small-cruise-ships.com

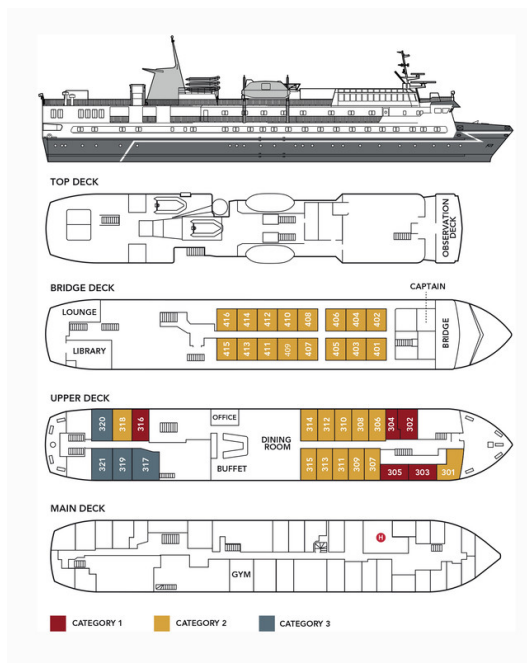
The Small Cruise Ship Collection

www.small-cruise-ships.com

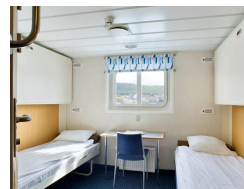
small-cruise-ships.com

info@small-cruise-ships.com

INSIDE YOUR SHIP



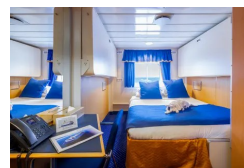
Classic Twin cabin



Comfort Twin



Explorer Twin or double



Quad Cabin



Single cabin

Triple Cabin

The Small Cruise Ship Collection

www.small-cruise-ships.com

small-cruise-ships.com

info@small-cruise-ships.com

PRICING

04-Feb-2027 to 17-Feb-2027

Comfort Twin	£9926 GBP pp
Explorer Twin or double	£9022 GBP pp
Triple Cabin	£8122 GBP pp
Quad Cabin	£7307 GBP pp
Single cabin	£14615 GBP pp
Classic Twin cabin	£8122 GBP pp

26-Feb-2027 to 11-Mar-2027

Triple Cabin	£8199 GBP pp
Single cabin	£14755 GBP pp
Comfort Twin	£10019 GBP pp
Explorer Twin or double	£9109 GBP pp
Classic Twin cabin	£8199 GBP pp
Quad Cabin	£7385 GBP pp

01-Dec-2027 to 14-Dec-2027

Single cabin	£15439 GBP pp
Comfort Twin	£10479 GBP pp
Explorer Twin or double	£9525 GBP pp
Triple Cabin	£8575 GBP pp
Classic Twin cabin	£8575 GBP pp
Quad Cabin	£7719 GBP pp

22-Dec-2027 to 04-Jan-2028

Single cabin	£17269 GBP pp
Comfort Twin	£11729 GBP pp
Explorer Twin or double	£10665 GBP pp
Triple Cabin	£9595 GBP pp
Classic Twin cabin	£9595 GBP pp
Quad Cabin	£8639 GBP pp

19-Feb-2028 to 03-Mar-2028

Comfort Twin	£10749 GBP pp
Explorer Twin or double	£9769 GBP pp
Single cabin	£15829 GBP pp
Triple Cabin	£8795 GBP pp
Classic Twin cabin	£8795 GBP pp
Quad Cabin	£7909 GBP pp