

The Small Cruise Ship Collection

www.small-cruise-ships.com

small-cruise-ships.com

info@small-cruise-ships.com

EXPLORING THE MALAY ARCHIPELAGO - LUXURY SMALL SHIP CRUISE

Embark on a captivating odyssey into the heart of the Malaysian archipelago, between South-East Asia and Oceania, where insular cultures with ancestral traditions meet preserved natural environments. Through this scattered chain of islands, the Philippines will reveal little-known shores that are perfect to be explored, with isolated beaches, historic villages and sailing to preserved islets. In Indonesia, the experience will continue. Observe enchanting marine life in Triton Bay, contemplate the pristine nature of the Tangkoko Nature Reserve, explore distant natural sites like Kitikiti Waterfall and discover Banda Neira in the Moluccas archipelago, a major site in the history of the spice trade. In West Papua, encounters and ancestral traditions will set the pace of your journey, while Triton Bay will enchant you with its karst landscapes visible during your Zodiac outing.



ITINERARY

Day 1 - Darwin

****Darwin**** is located in Australia's Northern Territory which is also known as the "Top End". It is the ****capital city**** and the most populated town of the Northern Territory. Darwin is a beautiful tropical city, a ****melting pot of people and cultures****, over 50 different cultures live and work side by side that prides itself in its unique and friendly laid-back lifestyle. Come discover the town's still recent history through its emblematic buildings such as the new ****Parliament House**** opened in 1994, a magnificent example of tropical architecture or ****Admiralty House**** declared heritage place, a tropical-style home elevated on stilts that has survived two cyclones and numerous

The Small Cruise Ship Collection

www.small-cruise-ships.com

01432 507 280 (within UK)

info@small-cruise-ships.com | small-cruise-ships.com



The Small Cruise Ship Collection

www.small-cruise-ships.com

small-cruise-ships.com

info@small-cruise-ships.com

air raids.

Day 2 - At sea

During your journey at sea, make the most of the many services and activities on board. Treat yourself to a moment of relaxation in the spa or stay in shape in the fitness centre. Depending on the season, let yourself be tempted by the swimming pool or a spot of sunbathing. This journey without a port of call will also be an opportunity to enjoy the conferences or shows proposed on board, depending on the activities offered, or to do some shopping in the boutique or to meet the PONANT photographers in their dedicated space. As for lovers of the open sea, they will be able to visit the ship's upper deck to admire the spectacle of the waves and perhaps be lucky enough to observe marine species. A truly enchanted interlude, combining comfort, rest and entertainment.

Day 3 - Kei Islands, Maluku Islands

The Kei Islands are blessed with kilometres of stunning, yet almost entirely empty, **white-sand beaches** and a deeply hospitable population. Beneath the mostly Christian facade, Kei culture is fascinatingly distinctive. Local history holds that ancestors of contemporary Kei islanders came from Bali, part of the expanding Hindu Majapahit kingdom from the western archipelago. Enjoy a day of **swimming and snorkelling** on an idyllic uninhabited picture **postcard tropical island**.

Day 4 - Triton Bay, West Papua

Triton Bay is one of three regions in Indonesia's West Papua province that comprise the Bird's Head Seascape (the other two are Raja Ampat and Cenderawasih Bay), which is now considered by marine biologists to be the **epicentre of the Coral Triangle**. It contains more fish and coral species than

anywhere else on the planet. Its unparalleled marine biodiversity and endemism, habitat richness, and relatively intact nature of its ecosystems are unique. Join your expedition team for a zodiac voyage through the spectacular rainforest capped karst islands. Later in the day enjoy the opportunity to explore the richness of the underwater realm.

Day 5 - Kitikiti Waterfall, Mommon

North of **Triton Bay**, in the Indonesian province of West Papua, lie the **Bomberai Peninsula** and **Sebakor** Bay. A real paradise for divers, this protected, authentic and very wild area boasts an exceptional biodiversity. Here, you will be able to admire the superb **Kitikiti Waterfall** where you could enjoy a swim or snorkel surrounded by lush nature, both on land and under water.

Day 6 - Banda Neira, Maluku Islands

From age-old traditional cultures and ancient vestiges, to coral reefs and lush green jungle... The attractions of the **remote Banda archipelago** seem endless. Better known as the legendary **"Spice Islands"** of the Ancient World, these small volcanic landmasses were the fabled prize of colonial powers for more than four centuries. Every colonial power of significance fought for control of these ten small islands that today have become largely forgotten. Walking the streets of **Banda Neira** is a surreal experience as your eyes are drawn to the eclectic **mix of Portuguese, Dutch and British architecture**, the remnants of a rich and tumultuous history. It is without doubt the most historically significant and interesting of all the "Spice Islands".

Day 7 - Pulau Molana

The Small Cruise Ship Collection

www.small-cruise-ships.com

01432 507 280 (within UK)

info@small-cruise-ships.com | small-cruise-ships.com



The Small Cruise Ship Collection

www.small-cruise-ships.com

small-cruise-ships.com

info@small-cruise-ships.com

In the heart of the Moluccas, Saparua Island offers an authentic port of call, where local traditions remain a way of life. After a **traditional welcome** in a small village, you will walk to a space devoted to cultural performances, before continuing on to a **restored former Dutch fort**, overlooking the ocean. With local guides, you will wander between the fort and the adjacent museum, dedicated to military history and regional conflicts. The island is particularly renowned for its traditional **palm sugar production**. Between heritage and strolling around the **streets edged with old houses**, this port of call will ensure a full immersion in the heart of the Moluccas culture.

Day 7 - Pulau Saparua

An uninhabited island with **untamed charm**, Molana is perfect for a simple getaway by the sea. Edged by a **vast white-sand beach**, it is an invitation to relaxation, swimming and contemplation in pristine natural surroundings. You will see coconut shells broken by the **coconut crab**, a species that is only seen at night. Some traces of occasional occupation, such as an old abandoned site or **temporary fishing camps**, bear witness to human passage without altering the island's isolated character. Between raw nature and absolute tranquillity, Molana offers a timeless port of call, ideal for savouring the simplicity of an intact environment.

Day 8 - At sea

During your journey at sea, make the most of the many services and activities on board. Treat yourself to a moment of relaxation in the spa or stay in shape in the fitness centre. Depending on the season, let yourself be tempted by the swimming pool or a spot of sunbathing. This journey without a port of call will also be an opportunity to enjoy the conferences or shows proposed on board, depending on the activities offered, or to do some

shopping in the boutique or to meet the PONANT photographers in their dedicated space. As for lovers of the open sea, they will be able to visit the ship's upper deck to admire the spectacle of the waves and perhaps be lucky enough to observe marine species. A truly enchanted interlude, combining comfort, rest and entertainment.

Day 9 - Tangkoko Nature Reserve, North Sulawesi

Day 10 - At sea

During your journey at sea, make the most of the many services and activities on board. Treat yourself to a moment of relaxation in the spa or stay in shape in the fitness centre. Depending on the season, let yourself be tempted by the swimming pool or a spot of sunbathing. This journey without a port of call will also be an opportunity to enjoy the conferences or shows proposed on board, depending on the activities offered, or to do some shopping in the boutique or to meet the PONANT photographers in their dedicated space. As for lovers of the open sea, they will be able to visit the ship's upper deck to admire the spectacle of the waves and perhaps be lucky enough to observe marine species. A truly enchanted interlude, combining comfort, rest and entertainment.

Day 11 - At sea

During your journey at sea, make the most of the many services and activities on board. Treat yourself to a moment of relaxation in the spa or stay in shape in the fitness centre. Depending on the season, let yourself be tempted by the swimming pool or a spot of sunbathing. This journey without a port of call will also be an opportunity to enjoy the conferences or shows proposed on board, depending on the activities offered, or to do some shopping in the boutique or to meet the PONANT photographers

The Small Cruise Ship Collection
www.small-cruise-ships.com

01432 507 280 (within UK)

info@small-cruise-ships.com | small-cruise-ships.com



The Small Cruise Ship Collection

www.small-cruise-ships.com

small-cruise-ships.com

info@small-cruise-ships.com

in their dedicated space. As for lovers of the open sea, they will be able to visit the ship's upper deck to admire the spectacle of the waves and perhaps be lucky enough to observe marine species. A truly enchanted interlude, combining comfort, rest and entertainment.

Day 12 - Limasawa

The island of Limasawa is small, **authentic, wild and well-preserved**. It has historic importance, since it is known around the world as the cradle of Christianity in the Philippines. **Luxuriant forests** line its coastline, and many sites are perfect for diving. You will ride a tricycle up to Magellan's Cross, an iconic site located on the island's heights, before coming back down in the direction of the small temple and a wishing well where you will **see typical shows and taste some local dishes**. During a **boat trip** along the wooded coast, you will be able to go **snorkelling** and admire a **great variety of coral and fish**. Offering both discovery and relaxation, this port of call promises a total change of scenery.

Day 13 - Cuatro Islands

Travelling through the eastern provinces of the **Philippines** enables us to discover some of the last remaining pristine environments and remote untouched villages scattered throughout this nation of contrasts. The **Cuatro Islands** is a 12,500-hectare protected landscape and seascape situated in the municipalities of Inopacan and Hindang. The Cuatro Islands are four small islands renowned for their white sand beaches, traditional **fishing villages** and colourful marine environment. Here you will have the opportunity to witness village life in a remote, traditional fishing village and snorkel in the **clear tropical waters**.

Day 14 - Cresta de Gallo Island

Located off the coast of the large island of Sibuyan, in the Romblon Province, Cresta de Gallo offers a real change of scenery, thanks to its breathtaking natural landscapes and its **tropical vegetation**. This preserved sanctuary is composed of two islands connected by a long **white sandbar**. The island is known to shelter diverse marine life, particularly **colourful tropical fish** and sea turtles. It has no tourist infrastructure or local community, and its ecosystem is rich in **coral reefs**. You will be able to explore the island on foot and take a dip in its **crystal-clear turquoise waters**, perfect for relaxing and **swimming**.

Day 15 - Manila

On first sight, the Philippines' capital shows its highly Americanised Asian megalopolis side, with ultramodern skyscrapers set all along the waterfront. But when you stroll through the cobbled streets of the **Intramuros** district, you'll discover a different side of **Manila**, one that's full of old-world charm. An enchanted pause in the middle of urban bustle, Rizal Park's 60 hectares of magnificent green parkland is perfect for recharging your batteries. To see the city from a different angle, take a walk along Roxas boulevard, a popular seaside promenade.

Please note:

Itineraries are subject to change.

The Small Cruise Ship Collection

www.small-cruise-ships.com

01432 507 280 (within UK)

info@small-cruise-ships.com | small-cruise-ships.com



The Small Cruise Ship Collection

www.small-cruise-ships.com

small-cruise-ships.com

info@small-cruise-ships.com

YOUR SHIP: LE SOLEAL

YOUR SHIP: Le Soleal

VESSEL TYPE:

LENGTH:

PASSENGER CAPACITY:

BUILT/REFURBISHED:

Luxury Small Ship A sleek silhouette, a welcoming intimate atmosphere, and the same philosophy that has made her sister ships, L'Austral, Lyrial and Le Boreal, such a success. This magnificent yacht of only 132 staterooms and suites, all with balconies, has contemporary decor inspired by the luxury yachting world, with fluid lines and a modern colour scheme combining natural wood with shades of grey and white. White Corian counters in the lobby contrast with the warmth of leather to recall a boat's hull, while the central sculpture of enamelled pieces takes its inspiration from the sea. In the lounge bar, the carpet picks up a tennis stripe theme symbolising a certain idea of cruising, one synonymous with French elegance and a chic seaside spirit. Wheelchairs 3 specially adapted wheelchair cabins (Deck 3 = Superior cabin no. 307, no balcony, Deck 4 = Prestige Cabin no. 407 - with balcony and Deck 5 = Prestige Cabin no 509, with balcony) and lifts to all decks/areas. Read about our recent Ponant cruise to Antarctica Please click the following links to read more about Ponant and the other Ponant cruise ships.



The Small Cruise Ship Collection

www.small-cruise-ships.com

01432 507 280 (within UK)

info@small-cruise-ships.com | small-cruise-ships.com

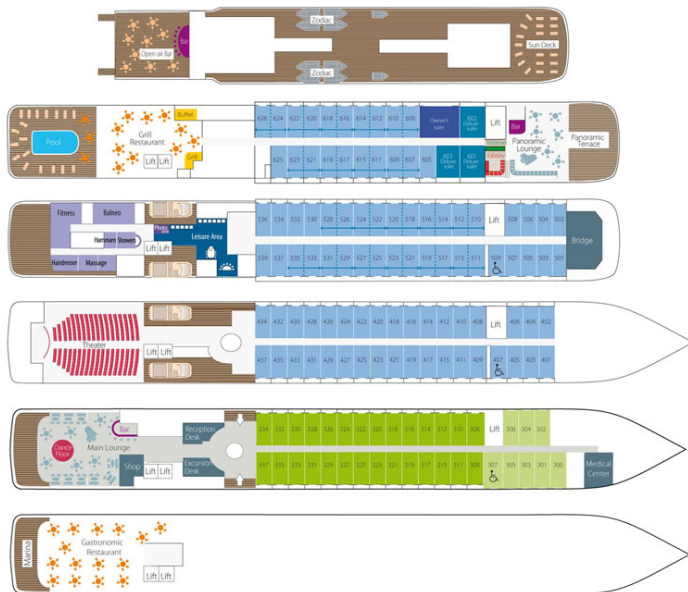
The Small Cruise Ship Collection

www.small-cruise-ships.com

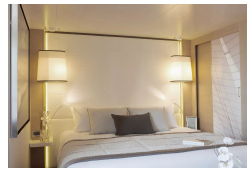
small-cruise-ships.com

info@small-cruise-ships.com

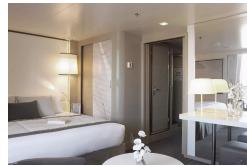
INSIDE YOUR SHIP



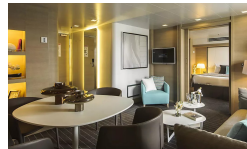
Deluxe Stateroom



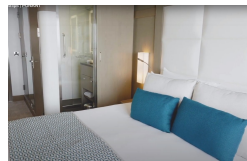
Deluxe Suite



Owner's Suite



Prestige Stateroom Deck 4



Prestige Stateroom Deck 5

Prestige Stateroom Deck 6

Prestige Suite Deck 5

Prestige Suite Deck 6

The Small Cruise Ship Collection

www.small-cruise-ships.com

01432 507 280 (within UK)

info@small-cruise-ships.com | small-cruise-ships.com



The Small Cruise Ship Collection

www.small-cruise-ships.com

small-cruise-ships.com

info@small-cruise-ships.com

PRICING

28-Aug-2027 to 11-Sep-2027

Prestige Stateroom Deck 6	£8885 GBP pp
Prestige Suite Deck 5	£16685 GBP pp
Superior Stateroom	£6665 GBP pp
Deluxe Suite	£12345 GBP pp
Prestige Stateroom Deck 4	£8015 GBP pp
Prestige Stateroom Deck 5	£8405 GBP pp
Prestige Suite Deck 6	£17555 GBP pp
Owner's Suite	£28575 GBP pp
Deluxe Stateroom	£7225 GBP pp

Owner's Suite	£28575 GBP pp
Prestige Stateroom Deck 5	£8405 GBP pp
Prestige Stateroom Deck 6	£8885 GBP pp
Superior Stateroom	£6665 GBP pp
Deluxe Stateroom	£7225 GBP pp
Prestige Stateroom Deck 4	£8015 GBP pp
Prestige Suite Deck 5	£16685 GBP pp
Prestige Suite Deck 6	£17555 GBP pp
Deluxe Suite	£12345 GBP pp

01-Jun-2028 to 15-Jun-2028

Owner's Suite	£28575 GBP pp
Prestige Stateroom Deck 6	£9475 GBP pp
Prestige Stateroom Deck 4	£8545 GBP pp
Deluxe Suite	£13195 GBP pp
Prestige Suite Deck 5	£17835 GBP pp
Superior Stateroom	£7105 GBP pp
Prestige Stateroom Deck 5	£8965 GBP pp
Prestige Suite Deck 6	£18765 GBP pp
Deluxe Stateroom	£7705 GBP pp

04-Sep-2028 to 18-Sep-2028