



## EXPLORING ICELAND: FJORDS, WATERFALLS AND WILDLIFE EXPEDITION

Discover the land of fire and ice on a six-day voyage to the remote shores and volcanic isles of northwest Iceland. Hike and bike along rugged fjords and discover stunning waterfalls and nature-filled landscapes. Set out by Zodiac to navigate dramatic shorelines, from the dramatic Westfjords to the storied and adventurous Skagafjörður region. Explore the legacy of Viking explorers and intrepid fishermen during visits to historic villages.



### ITINERARY

Day 1 Reykjavik, Iceland / Embark Ship

Arrive in Reykjavik, the world's northernmost capital, which lies just below the Arctic Circle. Transfer from the airport to the city and spend the day at your own pace exploring the sights, sounds and tastes of this Arctic capital. Check in with the hospitality desk this afternoon before embarking the ship.

Arrival Time: Arrive before 10:00 a.m.

Arrival City: Reykjavik, Iceland



Meals Included: Breakfast, Lunch, Dinner

#### Day 2 Djúpavík

Enjoy a leisurely morning at sea learning about Iceland and its incredible biodiversity. Join your expedition staff on the bow of the ship as you keep watch for the close to 20 whale species that call the Westfjords home. Spend the afternoon on the remote eastern side of the Westfjords, an area difficult to access but boasting spectacular beauty and rich history. The tiny town of Djúpavík held its place on the map because of the golden age of herring. During its heyday in the 1930s, its herring plant was the largest concrete structure in Iceland. The plant closed in 1954 but remains as a small museum and a memory of the rich productivity of the herring industry in Iceland. Visit the museum and learn about the significance of this resource to all of Iceland in the 20th century.

Meals Included: Breakfast, Lunch, Dinner

#### Day 3 Skagafjörður

Skagafjörður is the gateway to north Iceland, known for its glacial rivers, Icelandic horses and saga history. Take a float trip on the Jokulsa river or visit a historic rural turf farm to understand rural life in Iceland. Finally, learn about Grettir the Strong and the saga named after him by exploring Drangey Island and spotting the multitudes of birds that call the island

home like kittiwakes, shearwaters and possibly even ravens and gyrfalcons.

Meals Included: Breakfast, Lunch, Dinner

#### Day 4 Ísafjörður / Vigur

Explore the beautiful and peaceful Westfjords region of Iceland. Enter Ísafjarðardjup and land at Vigur Island to visit an eider farm and learn about the down cleaning process. Get to know Ísafjörður, the capital of the Westfjords, on a walking tour--complete with local sights, sounds and tastes--or venture through the trails at a local forest.

Meals Included: Breakfast, Lunch, Dinner

#### Day 5 Grundarfjörður

Serving as the center of trade on the Snaefellsnes Peninsula since the 15th century, Grundarfjörður is now best known for its Kirkjufell Mountain and picturesque waterfall. Alongside the National Geographic Photography Expert, capture your own images amongst this dynamic landscape and the weather swirling around the Peninsula. Alternatively, hike through a local lava field or explore the town's Saga Center.

Meals Included: Breakfast, Lunch, Dinner

#### Day 6 Reykjavík / Disembark Ship



Disembark in Reykjavik and transfer to the airport for flights home.

Departure Time: Depart anytime after 10:30 a.m.

Departure City: Reykjavik, Iceland

Meals Included: Breakfast, Lunch

Please note:

Itineraries are subject to change.





## YOUR SHIP: NATIONAL GEOGRAPHIC EXPLORER

<b>YOUR SHIP:</b>	<b>National Geographic Explorer</b>
<b>VESSEL TYPE:</b>	<b>Luxury Expedition</b>
<b>LENGTH:</b>	<b>108 meters</b>
<b>PASSENGER CAPACITY:</b>	<b>148 (single &amp; twin cabins)</b>
<b>BUILT/REFURBISHED:</b>	<b>1982 / 2008</b>

National Geographic Explorer is a state-of-the-art expedition ship. It is a fully stabilized, ice-class vessel, enabling it to navigate polar passages while providing exceptional comfort. It carries kayaks and a fleet of Zodiac landing craft. An Undersea Specialist operates a remotely operated vehicle (ROV) and sophisticated video equipment, extending access to the underwater world. Public areas : Bistro Bar; Chart Room; Restaurant; Global Gallery; Library, Lounge with full service bar and state-of-the-art facilities for films, slideshows and presentations; Mud Room with lockers for expedition gear, and Observation Lounge. Our "Open Bridge" provides guests an opportunity to meet our Officers and Captain and learn about navigation. Meals : Served in single seatings with unassigned tables for an informal atmosphere and easy mingling. Menu is international with local flair. Cabins : All cabins face outside with windows or portholes, private facilities and climate controls. Expedition Equipment : Zodiac landing craft, kayaks, Remotely Operated Vehicle (ROV), hydrophone, SplashCam, underwater video camera, Crow's Nest remote controlled camera, video microscope, snorkeling gear. Special Features : A full-time doctor, Undersea Specialist, LEX Photo Specialist and Video

Chronicler, Internet Cafe and laundry. Wellness : The vessel is staffed by two Wellness Specialists and features a glass enclosed Fitness Center, outdoor stretching area, two LEXspa treatment rooms



and Sauna.



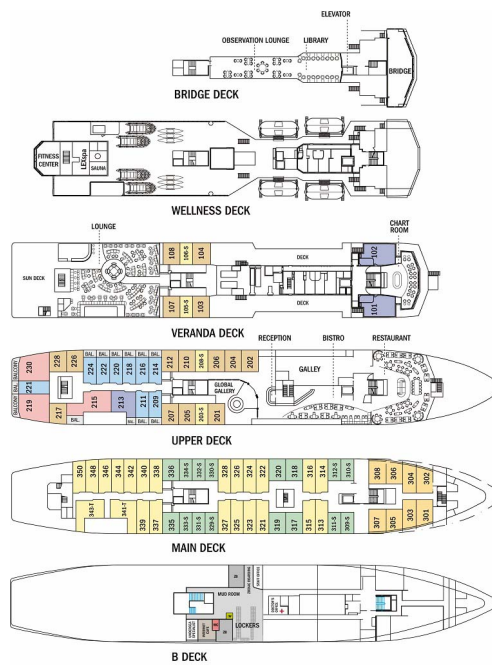
# The Small Cruise Ship Collection

[www.small-cruise-ships.com](http://www.small-cruise-ships.com)

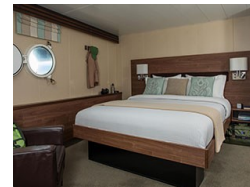
[small-cruise-ships.com](http://small-cruise-ships.com)

[info@small-cruise-ships.com](mailto:info@small-cruise-ships.com)

## INSIDE YOUR SHIP



Category 1. From





The Small Cruise  
Ship Collection

[www.small-cruise-ships.com](http://www.small-cruise-ships.com)

[small-cruise-ships.com](http://small-cruise-ships.com)

[info@small-cruise-ships.com](mailto:info@small-cruise-ships.com)

## PRICING

12-Aug-2025 to 17-Aug-2025

Category 1. From

£4845 GBP pp



The Small Cruise  
Ship Collection

[www.small-cruise-ships.com](http://www.small-cruise-ships.com)

01432 507 280 (within UK)

[info@small-cruise-ships.com](mailto:info@small-cruise-ships.com) | [small-cruise-ships.com](http://small-cruise-ships.com)