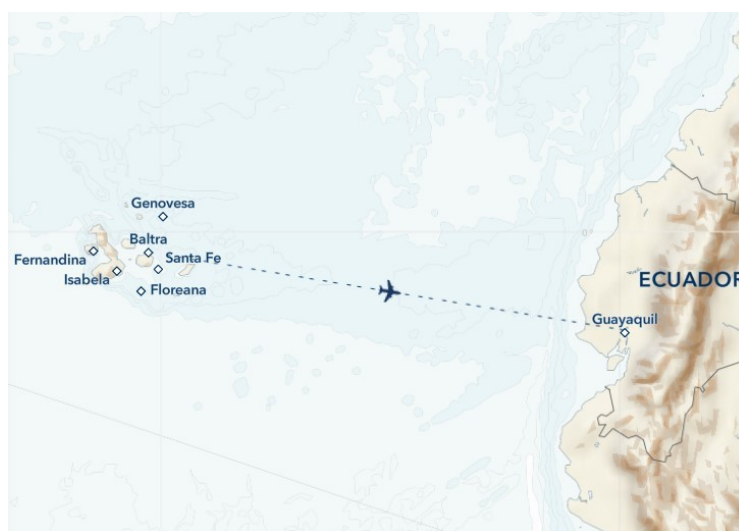




## EXPLORING GALAPAGOS: ONE WEEK SAILING THE ISLANDS

Zodiac to pristine beaches, kayak or stand-up paddleboard along volcanic shores, explore wildlife on land or under the sea. Experience the Galapagos aboard two elegant and nimble ships, well-equipped for up-close exploration. Perfect for couples, families, and solo travelers. Encounter abundant wildlife--blue-footed boobies, marine iguanas, Darwin's finches, pink flamingos, giant tortoises and more. The wildlife of Galapagos is legendary for being without fear in the presence of humans.



### ITINERARY

#### DAY 1 Guayaquil, Ecuador

We meet you on arrival in Ecuador, either in Quito, Ecuador's capital city in the Andes, or in the coastal city of Guayaquil, for an included transfer to your convenient hotel for an overnight stay. Both cities are well-served by international carriers, and Galapagos flights start and end in Quito with a stop in Guayaquil. Guests in Guayaquil stay at the locally owned Hotel Oro Verde and have the choice of several hotels in Quito, including a convenient airport hotel. You may opt for a pre-voyage extension to Mashpi Reserve in the tropical Andes outside Quito, a biodiversity hotspot. Or choose to reserve additional hotel nights and tours in Quito or Guayaquil.



## The Small Cruise Ship Collection

[www.small-cruise-ships.com](http://www.small-cruise-ships.com)



[small-cruise-ships.com](http://small-cruise-ships.com)

[info@small-cruise-ships.com](mailto:info@small-cruise-ships.com)

Arrival Time: Anytime.

Arrival City: Quito or Guayaquil, Ecuador

### DAY 2 Quito or Guayaquil / Galápagos Islands

In the morning we will fly to the Galapagos and embark the National Geographic Endeavour II. After lunch, our journey begins as we explore the islands and their remarkable wildlife.

Meals Included: Breakfast, Lunch, Dinner

### DAYS 3-8 Galápagos Islands

Below are a selection of islands we may visit during our expedition. Itineraries are subject to Galapagos National Park regulations.

#### North Seymour:

Follow coastal trails past playful Galapagos sea lions on this wildlife-rich central island. Continue inland through a silvery forest of endemic palo santo trees, where frigatebirds nest, blue-footed boobies dance, and where we may also encounter prehistoric-looking land iguanas feeding on cactus.

#### Isabela:

Cross the Equator at Volcan Ecuador, northernmost of Isabela's six great shield volcanoes. Keep an eye out for whales and dolphins, sea turtles, and the elusive ocean sunfish. Over two days, land in the footsteps of Darwin and Melville, and look for wildlife along the wildly eroded volcanic shore.

#### Fernandina:

One of the most active oceanic volcanoes in the world, Fernandina is the youngest and most pristine island in Galapagos -- and home to the strange flightless cormorant, Galapagos penguins, and the largest marine iguanas. Hikes ashore lead across impressive recent lava flows.

#### Española:

See swallow-tailed gulls, Española mockingbirds, Nazca boobies and, seasonally, the world's only population of waved albatross at this bird paradise, also home to vividly colored marine iguanas. Watch sea lions on the white sand beach, and snorkel offshore at Gardner Bay.

#### Floreana:

Follow a trail past a rose pink-tinted lagoon sometimes frequented by flamingos. Snorkel among sea lions and abundant fish, or cruise along Champion Islet by Zodiac. Visit the historic mail barrel at Post Office Bay.

#### Santa Cruz:

Visit Puerto Ayora, the largest town and headquarters of both the Galapagos National Park and Charles Darwin Research Station. See the monument to Lonesome George, and tour the giant tortoise breeding corrals. Witness the giant tortoises roaming in the wild in the lush, green highlands.

#### Bartolome:

Climb the steps to the summit of this 300-foot volcanic wonderland for stunning views. Explore, swim, and snorkel from the beach. Catch a glimpse of Galapagos penguins, one of the



The Small Cruise Ship Collection

[www.small-cruise-ships.com](http://www.small-cruise-ships.com)

01432 507 280 (within UK)

[info@small-cruise-ships.com](mailto:info@small-cruise-ships.com) | [small-cruise-ships.com](http://small-cruise-ships.com)





world's rarest.

#### Santiago:

Explore tide pools and look for fur seals sheltered in quiet grottos of black basalt. Swim, snorkel, kayak, and paddleboard along Santiago's spectacular coast, and explore an enchanting coastal forest where Charles Darwin once walked.

#### Genovesa:

Sail across the Equator to the remote northern realm of the Galapagos into this flooded caldera, home to over one million seabirds. Visit Prince Philip's Steps at the top of the island. Highlights along the trail are many, from Nazca, red- and blue-footed boobies and frigates, to gulls, owls, fur seals, hammerhead sharks, turtles, and manta rays.

#### San Cristobal:

Search for red-footed boobies and the endemic mockingbird and lava lizard -- found only on this easternmost island. Walk along the powdery white sand at a gorgeous beach fronted by iconic Kicker Rock. Explore Baquerizo Moreno, where sea lions thrive in the middle of town.

Meals Included: Breakfast, Lunch, Dinner

#### DAY 9 Galápagos Islands / Disembark / Guayaquil or Quito

Disembark this morning for a return flight to the mainland, where we transfer to Hotel Oro Verde in Guayaquil, and have several options in Quito, including a convenient airport hotel. The afternoon and evening are at your leisure. You may be able to take advantage of overnight flights home. Ask your expedition

specialist about Peru, Quito, and other post-voyage options. Many guests upon arrival in Guayaquil continue on a flight to Lima, Peru, for Exploring Galapagos + Peru's Land of the Inca.

Meals Included: Breakfast

#### DAY 10 Guayaquil or Quito

After breakfast, transfer to the airport and board flights home, unless you have arranged for additional nights or an extension.

Departure Time: Anytime on day 10, or anytime after 7:00 p.m. local time on day 9.

Departure City: Guayaquil or Quito

Meals Included: Breakfast

#### Please note:

Itineraries are subject to change.



## The Small Cruise Ship Collection

[www.small-cruise-ships.com](http://www.small-cruise-ships.com)

[small-cruise-ships.com](http://small-cruise-ships.com)

[info@small-cruise-ships.com](mailto:info@small-cruise-ships.com)

## YOUR SHIP: NATIONAL GEOGRAPHIC ENDEAVOUR II

<b>YOUR SHIP:</b>	<b>National Geographic Endeavour II</b>
<b>VESSEL TYPE:</b>	<b>Expedition Ship</b>
<b>LENGTH:</b>	<b>73 metres</b>
<b>PASSENGER CAPACITY:</b>	<b>96 guests (in 53 outside cabins)</b>
<b>BUILT/REFURBISHED:</b>	<b>2005; Refurbished</b>



\_National Geographic Endeavour II\_ is a purpose-built expedition ship that first sailed in 2005. After undergoing extensive renovation this year, she will redeploy to Galápagos. She is exceptionally nimble and maneuverable, with great viewing from all public spaces, large windows in cabins and suites, state-of-the-art tools for exploration, and a fast, seamless twin Zodiac loading platform. Public Areas : Ship is fully air-conditioned. Covered deck with chairs and tables; doctor's office; fitness centre; LEXspa; global gallery; library; lounge with full-service bar and facilities for viewing and presentations; and sun deck. Our Ecuadorian captain welcomes guests to the bridge in accordance with our 'open bridge' policy. Cabins : All cabins face outside with windows. Each has private facilities and climate controls. Expedition Equipment : Kayaks, glass-bottom Zodiac, snorkeling gear, underwater video camera, video microscope, wet suits, and Zodiac landing craft. Special Features : Guest internet access, laundry service, and wellness program. Ship's doctor and video chronicler are also on board.



The Small Cruise Ship Collection

[www.small-cruise-ships.com](http://www.small-cruise-ships.com)

**01432 507 280** (within UK)

[info@small-cruise-ships.com](mailto:info@small-cruise-ships.com) | [small-cruise-ships.com](http://small-cruise-ships.com)





The Small Cruise  
Ship Collection

[www.small-cruise-ships.com](http://www.small-cruise-ships.com)



[small-cruise-ships.com](http://small-cruise-ships.com)

[info@small-cruise-ships.com](mailto:info@small-cruise-ships.com)

## INSIDE YOUR SHIP

Cabin. From



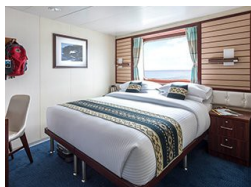
Category 01. From



Category 1



Category 1. From



The Small Cruise  
Ship Collection

[www.small-cruise-ships.com](http://www.small-cruise-ships.com)

01432 507 280 (within UK)

[info@small-cruise-ships.com](mailto:info@small-cruise-ships.com) | [small-cruise-ships.com](http://small-cruise-ships.com)



# The Small Cruise Ship Collection

[www.small-cruise-ships.com](http://www.small-cruise-ships.com)

[small-cruise-ships.com](http://small-cruise-ships.com)

[info@small-cruise-ships.com](mailto:info@small-cruise-ships.com)

## PRICING

### 06-Mar-2026 to 15-Mar-2026

Category 01. From	£7422 GBP pp
-------------------	--------------

### 20-Mar-2026 to 29-Mar-2026

Category 1. From	£5539 GBP pp
------------------	--------------

### 03-Apr-2026 to 12-Apr-2026

Category 1. From	£5706 GBP pp
------------------	--------------

### 10-Apr-2026 to 19-Apr-2026

Category 01. From	£8882 GBP pp
-------------------	--------------

### 01-May-2026 to 10-May-2026

Category 1. From	£5846 GBP pp
------------------	--------------

### 08-May-2026 to 17-May-2026

Category 01. From	£9816 GBP pp
-------------------	--------------

### 12-Jun-2026 to 21-Jun-2026

Category 1. From	£6238 GBP pp
------------------	--------------

### 19-Jun-2026 to 28-Jun-2026

Category 01. From	£8429 GBP pp
-------------------	--------------

### 17-Jul-2026 to 26-Jul-2026

Category 1. From	£6006 GBP pp
------------------	--------------

### 24-Jul-2026 to 02-Aug-2026

Category 01. From	£8454 GBP pp
-------------------	--------------

### 21-Aug-2026 to 30-Aug-2026

Category 01. From	£7650 GBP pp
-------------------	--------------

### 21-Aug-2026 to 30-Aug-2026

Category 1. From	£5828 GBP pp
------------------	--------------

### 18-Sep-2026 to 27-Sep-2026

Category 01. From	£6476 GBP pp
-------------------	--------------

### 16-Oct-2026 to 25-Oct-2026

Category 01. From	£6859 GBP pp
-------------------	--------------

### 30-Oct-2026 to 08-Nov-2026

Category 1. From	£4479 GBP pp
------------------	--------------

### 20-Nov-2026 to 29-Nov-2026

Category 1. From	£4834 GBP pp
------------------	--------------

### 04-Dec-2026 to 13-Dec-2026

Category 1	£5420 GBP pp
------------	--------------

Category 5	£9585 GBP pp
------------	--------------

Category 4	£8020 GBP pp
------------	--------------

Category 2	£6464 GBP pp
------------	--------------

### 11-Dec-2026 to 20-Dec-2026

Category 01. From	£5880 GBP pp
-------------------	--------------

### 11-Dec-2026 to 20-Dec-2026

Category 1. From	£4810 GBP pp
------------------	--------------

### 08-Jan-2027 to 17-Jan-2027

Category 1. From	£5602 GBP pp
------------------	--------------

### 08-Jan-2027 to 17-Jan-2027



The Small Cruise Ship Collection

[www.small-cruise-ships.com](http://www.small-cruise-ships.com)

01432 507 280 (within UK)

[info@small-cruise-ships.com](mailto:info@small-cruise-ships.com) | [small-cruise-ships.com](http://small-cruise-ships.com)



# The Small Cruise Ship Collection

[www.small-cruise-ships.com](http://www.small-cruise-ships.com)



[small-cruise-ships.com](http://small-cruise-ships.com)

[info@small-cruise-ships.com](mailto:info@small-cruise-ships.com)

Category 01. From £7528 GBP pp

Cabin. From £12097 GBP pp

12-Feb-2027 to 21-Feb-2027

Category 01. From £7929 GBP pp

19-Feb-2027 to 28-Feb-2027

Category 1. From £5467 GBP pp

12-Mar-2027 to 21-Mar-2027

Category 1. From £5650 GBP pp

26-Mar-2027 to 04-Apr-2027

Category 01. From £7722 GBP pp

09-Apr-2027 to 18-Apr-2027

Cabin. From £11485 GBP pp

23-Apr-2027 to 02-May-2027

Category 1. From £6156 GBP pp

14-May-2027 to 23-May-2027

Cabin. From £11485 GBP pp

21-May-2027 to 30-May-2027

Category 1. From £6156 GBP pp

11-Jun-2027 to 20-Jun-2027

Cabin. From £11791 GBP pp

18-Jun-2027 to 27-Jun-2027

Category 1. From £5746 GBP pp

09-Jul-2027 to 18-Jul-2027

Category 1. From £5896 GBP pp

16-Jul-2027 to 25-Jul-2027



The Small Cruise Ship Collection

[www.small-cruise-ships.com](http://www.small-cruise-ships.com)

01432 507 280 (within UK)

[info@small-cruise-ships.com](mailto:info@small-cruise-ships.com) | [small-cruise-ships.com](http://small-cruise-ships.com)





## The Small Cruise Ship Collection

[www.small-cruise-ships.com](http://www.small-cruise-ships.com)

[small-cruise-ships.com](http://small-cruise-ships.com)

[info@small-cruise-ships.com](mailto:info@small-cruise-ships.com)

## PRICING

### 13-Aug-2027 to 22-Aug-2027

Cabin. From £11791 GBP pp

### 13-Aug-2027 to 22-Aug-2027

Category 1. From £6321 GBP pp

### 03-Sep-2027 to 12-Sep-2027

Category 1. From £5448 GBP pp

### 10-Sep-2027 to 19-Sep-2027

Cabin. From £11179 GBP pp

### 15-Oct-2027 to 24-Oct-2027

Category 1. From £5448 GBP pp

### 05-Nov-2027 to 14-Nov-2027

Category 1. From £5448 GBP pp

### 05-Nov-2027 to 14-Nov-2027

Cabin. From £11179 GBP pp

### 10-Dec-2027 to 19-Dec-2027

Category 1. From £5448 GBP pp

### 10-Dec-2027 to 19-Dec-2027

Cabin. From £11179 GBP pp

### 07-Jan-2028 to 16-Jan-2028

Category 1. From £5746 GBP pp

### 14-Jan-2028 to 23-Jan-2028

Cabin. From £11791 GBP pp

### 04-Feb-2028 to 13-Feb-2028

Category 1. From £5448 GBP pp

### 04-Feb-2028 to 13-Feb-2028

Cabin. From £11179 GBP pp

### 10-Mar-2028 to 19-Mar-2028

Category 1. From £5448 GBP pp

### 10-Mar-2028 to 19-Mar-2028

Cabin. From £11179 GBP pp



The Small Cruise Ship Collection

[www.small-cruise-ships.com](http://www.small-cruise-ships.com)

01432 507 280 (within UK)

[info@small-cruise-ships.com](mailto:info@small-cruise-ships.com) | [small-cruise-ships.com](http://small-cruise-ships.com)