

## The Small Cruise Ship Collection

www.small-cruise-ships.com

small-cruise-ships.com

info@small-cruise-ships.com

### EXPLORER CRUISE - FROM SIEM REAP TO PHNOM PENH

Go deeper into the mesmerising culture and life the Mekong river Every activity onboard the five-star Aqua Mekong brings a fresh perspective of culture and life in Cambodia and Vietnam, so the 4-night itinerary is an ideal addition to any existing travel itinerary of the region. Included are twice-daily excursions (walk, bike, kayak or ride a tuk-tuk) and expert-guided visits to Mekong River's dynamic riverside markets, villages, and holy sites.



#### ITINERARY

##### Day 1 CAMBODIA Tonle Sap Lake - Siem Reap

Our crew warmly welcomes you at our meeting point at our Siem Reap meeting point where our air-conditioned coach will take you on a picturesque 45-minute countryside ride to the Aqua Mekong, which is docked on the Tonle Sap lake. for check-in to your 3-story, five star Mekong abode. Settle into your floating luxury retreat and memorable first night on board your five-star home on the legendary Mekong.

##### Day 2 CAMBODIA Tonle Sap Lake - Prek Toal - Moat Khla

Hop on our launch boats and discover vast wetlands, birdlife and remote stilt communities around the Tonle Sap Lake, a UNESCO Biosphere Reserve designated in 1997. Spot large waterbirds like the spot-billed pelicans, milky stork,

The Small Cruise Ship Collection

www.small-cruise-ships.com

01432 507 280 (within UK)

info@small-cruise-ships.com | small-cruise-ships.com



## The Small Cruise Ship Collection

[www.small-cruise-ships.com](http://www.small-cruise-ships.com)

[small-cruise-ships.com](http://small-cruise-ships.com)

[info@small-cruise-ships.com](mailto:info@small-cruise-ships.com)

black-headed ibis and the elusive masked finfoot within the 22,000-hectare Prek Toal Core Bird Reserve, one of the last refuges in Southeast Asia located on the Tonle Sap Lake. After lunch, sail to the floating village of Moat Khla and attend a Buddhist blessing ceremony in this isolated community accessible only by water.

### Day 3 CAMBODIA Tonle Sap Lake - Chhnok Tru - Kampong Chhnang

Explore remote villages around the Tonle Sap Lake, designated as a UNESCO Biosphere Reserve in 1997. In Chhnok Tru, we "slide" into an ice factory and learn from locals what it's like to live in a town where schools, churches, pagodas, and even the karaoke bar and police station all float. In the afternoon, continue experiencing Khmer riverside life in Kampong Chhnang. In this serene village, meet traditional potters and palm-sugar producers and watch them practice age-old craftsmanship and techniques dating back to the 6th century that is still highly relevant and valuable today.

### Day 4 CAMBODIA Tonle Sap And Mekong River - Koh Chen - Koh Oknha Tey

Awake to the beauty of rural Cambodia and sail by skiff to the silversmith village of Koh Chen for a first-hand encounter with artisans producing magnificent royal Khmer silverware. Keep an eye out for their famous silver bowls, regularly chosen by Cambodia's king as gifts for visiting dignitaries. In the afternoon, we set off for the Koh Oknha Tey, Mekong's 'Silk Island' where Khmer artisans showcase the dyeing and weaving of krama, a silk scarf loved by locals and a treasured cultural asset that dates back from the Angkor period. A biking option is available for those who wish to explore deeper into the island.

### Day 5 CAMBODIA Phnom Penh

See the best of the Cambodian capital on motorized tuk-tuk, including the Royal Palace, Silver Pagoda and the National Museum of Cambodia, home to the world's largest collection of Khmer art. Based on your preferences, visit the Tuol Sleng Genocide Museum or shop at the Russian Market before disembarking the Aqua Mekong.

### Please Note:

All itineraries are subject to change, due to weather and other conditions\_

The Small Cruise Ship Collection

[www.small-cruise-ships.com](http://www.small-cruise-ships.com)

01432 507 280 (within UK)

[info@small-cruise-ships.com](mailto:info@small-cruise-ships.com) | [small-cruise-ships.com](http://small-cruise-ships.com)



The Small Cruise  
Ship Collection

[www.small-cruise-ships.com](http://www.small-cruise-ships.com)

[small-cruise-ships.com](http://small-cruise-ships.com)

[info@small-cruise-ships.com](mailto:info@small-cruise-ships.com)

## YOUR SHIP: AQUA MEKONG

**YOUR SHIP:** Aqua Mekong

**VESSEL TYPE:**

**LENGTH:**

**PASSENGER CAPACITY:**

**BUILT/REFURBISHED:**

Spacious and indulgent, yet intimate enough to feel entirely exclusive, the Aqua Mekong incorporates relaxed yet refined lounging and dining areas and can accommodate a maximum of 40 guests plus crew. Modern navigation technologies and the highest cruise ship standards as well as our experienced river pilot and crew ensure smooth travel and safety on the water. The Aqua Mekong has 20 air conditioned Design Suites, each one a generous 30 square meters (320 square feet), eight with balconies and all created entirely of local materials with the relaxed sophistication and contemporary comforts of a five star resort. Floor to ceiling panoramic windows allow guests to gaze upon the Mekong from the pillow top California king size bed that can be converted upon request into two full twin beds. More captivating views await on the plush, roomy daybed placed by the window wall or for our eight balcony accommodations, outside along with a romantic table for two. Those who wish to keep up on the world beyond these enthralling riverbanks will appreciate the flat screen television and complementary high speed wireless internet. Sunlit indoors and out, the top level Observation Deck aboard the Aqua Mekong has been designed to seamlessly connect guests with the constantly shifting

landscape of floating Vietnamese villages, French colonial church spires and gilded Buddhist stupas along this mighty river, always in the utmost comfort. Whether one chooses to relax in the air conditioned Indoor Lounge, go horizontal under the sun outside at the ship's Outdoor Lounge area or cool off with a plunge in the shimmering pool at the bow side, the Observation Deck ensures that the river always remains in full view. Guests gravitate to the Indoor Lounge in the mornings for ca phe a, Vietnamese coffee poured over ice with sweet condensed milk, between excursions to swap travelers tales and for daily lectures from the expert local guides. Indoor and outdoor bars Indoor dining room and outdoor private dining Private screening room with theater-style seating Private library/games room Outside shaded lounge with single and double day beds Antique and artisanal boutique Lobby lounge Observation deck with outdoor sunbeds Top deck exercise room overlooking the river Infirmary with onboard medical staff Outdoor plunge pool with private cabanas Two spa treatment rooms, each with single and double massage beds . Ten bicycles are provided free of

The Small Cruise  
Ship Collection

[www.small-cruise-ships.com](http://www.small-cruise-ships.com)

01432 507 280 (within UK)

[info@small-cruise-ships.com](mailto:info@small-cruise-ships.com) | [small-cruise-ships.com](http://small-cruise-ships.com)



charge onboard

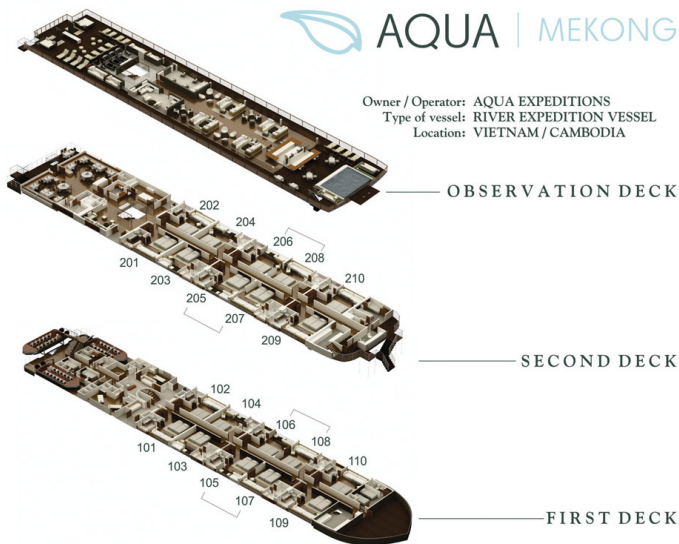
# The Small Cruise Ship Collection

[www.small-cruise-ships.com](http://www.small-cruise-ships.com)

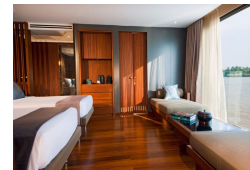
[small-cruise-ships.com](http://small-cruise-ships.com)

[info@small-cruise-ships.com](mailto:info@small-cruise-ships.com)

## INSIDE YOUR SHIP



Suite. From





# The Small Cruise Ship Collection

[www.small-cruise-ships.com](http://www.small-cruise-ships.com)

[small-cruise-ships.com](http://small-cruise-ships.com)

[info@small-cruise-ships.com](mailto:info@small-cruise-ships.com)

## PRICING

**25-Sep-2026 to 29-Sep-2026**

Suite. From £4928 GBP pp

**09-Oct-2026 to 13-Oct-2026**

Suite. From £4928 GBP pp

**23-Oct-2026 to 27-Oct-2026**

Suite. From £4928 GBP pp

**06-Nov-2026 to 10-Nov-2026**

Suite. From £4928 GBP pp

**20-Nov-2026 to 24-Nov-2026**

Suite. From £4928 GBP pp

**10-Sep-2027 to 14-Sep-2027**

Suite. From £5082 GBP pp

**24-Sep-2027 to 28-Sep-2027**

Suite. From £5082 GBP pp

**08-Oct-2027 to 12-Oct-2027**

Suite. From £5082 GBP pp

**22-Oct-2027 to 26-Oct-2027**

Suite. From £5082 GBP pp

**05-Nov-2027 to 09-Nov-2027**

Suite. From £5082 GBP pp

**19-Nov-2027 to 23-Nov-2027**

Suite. From £5082 GBP pp

**08-Sep-2028 to 12-Sep-2028**

Suite. From £5395 GBP pp

**22-Sep-2028 to 26-Sep-2028**

Suite. From £5395 GBP pp

**06-Oct-2028 to 10-Oct-2028**

Suite. From £5395 GBP pp

**20-Oct-2028 to 24-Oct-2028**

Suite. From £5395 GBP pp

**03-Nov-2028 to 07-Nov-2028**

Suite. From £5395 GBP pp

**17-Nov-2028 to 21-Nov-2028**

Suite. From £5395 GBP pp

The Small Cruise Ship Collection  
[www.small-cruise-ships.com](http://www.small-cruise-ships.com)

01432 507 280 (within UK)

[info@small-cruise-ships.com](mailto:info@small-cruise-ships.com) | [small-cruise-ships.com](http://small-cruise-ships.com)