



The Small Cruise Ship Collection

www.small-cruise-ships.com



small-cruise-ships.com

info@small-cruise-ships.com

EXPLORE THE NORWEGIAN FJORDS

Embark on the ultimate exploration on this Norwegian Fjords luxury cruise, a 10-night voyage commencing in the vibrant city of Amsterdam and culminating in the Arctic splendour of Tromsø. This cruise takes you through stunning fjords and picturesque harbours, featuring some of Norway's most breath-taking natural landscapes, best experienced aboard a luxury expedition ship. During this journey, you'll encounter a host of captivating locations, from the cultural richness of Amsterdam and the quaint charm of Helgoland, to the historic town of Trondheim and the picturesque village of Reine nestled amidst the majestic peaks of the Lofoten Islands.



ITINERARY

Day 1 - Amsterdam

Amsterdam is a gorgeous Dutch city where a boat cruise along the canals gets to the heart of things. Yet, the magic also unfolds while strolling through narrow streets and crossing the hundreds of bridges. It houses a treasure trove of fabulous art museums, including the Rijksmuseum, adorned with Dutch Masters, conveniently located near the Van Gogh Museum. To



The Small Cruise Ship Collection

www.small-cruise-ships.com

01432 507 280 (within UK)

info@small-cruise-ships.com | small-cruise-ships.com



The Small Cruise Ship Collection

www.small-cruise-ships.com



small-cruise-ships.com

info@small-cruise-ships.com

the south, picturesque stretches of countryside with windmills line the canals.

Day 2 - Helgoland

This tiny German island, 2 km long and 56 m above sea level in the North Sea, is surrounded by jagged red sandstone cliffs. The mostly grassy plateau joined Schleswig-Holstein in 1890, after periods as possessions of Denmark and the United Kingdom. Tours of Festung Helgoland bunkers and war tunnels shed light on the island's wartime naval history. Today, Helgoland is a peaceful retreat, inviting windswept walks and birdwatching.

Day 3 - Mandal

The southernmost town in Norway has a curving 1 km, grassy dune-backed beach, Sea Sand, one of seven beaches in Furulunden forest park. Sea Sand is only one of the calm, beautiful hideaways surrounding this charming town of white-painted buildings at the mouth of the river Mandalselva. The snaking waterway is filled with sailboats while gentle hills rise as a backdrop. Mandal also has the largest wooden church in Norway, seating 1,800 people.

Day 4 - Bergen

The magnificent gateway to the fjords, Bergen is a medieval port surrounded by mountains. From the beauty of Bryggen, the seafront maze of ancient timber buildings, to the modern Floibanen Funicular that soars up Floyen peak, no one would

want to miss this city. Other highlights are the aquarium, the KODE art museum encompassing Norway's Edvard Munch, as well as Picasso, while outside town is composer Edvard Grieg's enchanting house.

Day 5 - Flam & Vik

Capital of the fjords, the village of Flam is unmissable. It sits at the end of Aurlandsfjord, a branch of huge Sognefjord which, at 204 km, is Norway's longest. The 650 m-high Stegastein viewing platform shows the area, a world of waterfalls and towering rock faces, in all its glory. The picturesque Flam Railway is one of the world's steepest rides and at 20km long it's also one of the most spectacular train journeys.

Deep in Sognefjord, the ancient village of Vik opens up the fjord's dramatically different arms - waterfall-fringed Arnafjord and tiny, narrow and steep-sided Finnaufjord to the west, and the wild World Heritage landscape of Naeroyfjord, itself 17 km long, to the east. Vik itself sits amid rich farmland - and has a dramatic 26 m-high statue of Viking saga hero Fridtjov the Bold, well-preserved wooden buildings and a 12th century stave church.

Day 6 - Nordfjordeid

The Eidsfjorden village of Nordfjordeid has a craftsman-built replica of Myklebust, Norway's largest known Viking ship. The surroundings boast rich Viking burial mounds. Nordfjordeid is also the gateway to Briksdalsbreen Glacier, an accessible arm of the expansive Jostedalbreen glacier. At the end of



The Small Cruise Ship Collection

www.small-cruise-ships.com

01432 507 280 (within UK)

info@small-cruise-ships.com | small-cruise-ships.com



The Small Cruise Ship Collection

www.small-cruise-ships.com



small-cruise-ships.com

info@small-cruise-ships.com

Innvikfjorden, the Loen Skylift gondola ascends 1,011 metres, offering breathtaking views.

Day 7 - Geiranger

Geiranger is a small village at the head of Geirangerfjord, a UNESCO heritage site for its staggering mix of snow-capped peaks, clear blue waters, lush greenery, and magnificent waterfalls. The mighty Seven Sisters are a series of seven waterfalls cascading down a steep cliff face. The 1,500 m Geiranger Skywalk at Dalsnibba offers panoramic vistas. In Geiranger, the Norwegian Fjord Centre is the visitor and education hub of the fjord region.

Day 7 - Alusand

At the mouth of Geirangerfjord, Alesund was rebuilt in Art Nouveau style after a devastating fire in 1904. The fairytale-style turrets and spires look wonderfully out of place amid fjords, peaks and dramatic waters. Atlanterhavsparken, one of northern Europe's biggest saltwater aquariums, is set into the coastal rocks. On the Town Mountain, Aksla, or Fjellstua, viewpoint has some of the best views over the town, mountains and fjords.

Day 8 - Trondheim

Tucked away amongst the hills of Trondheim fjord, Trondheim is a Viking city founded in the 11th century that is filled with colourful timber buildings. Nidaros Cathedral is the burial site of Viking king St Olav (c. 995 - 29 July 1030). The mighty

17th-century Kristiansten Fortress is the country's best preserved fortification. Stiftsgarden, the Norwegian royal residence, is believed to be one of the largest wooden buildings in northern Europe.

Day 9 - Svartisen, Svartisen Glacier

The mighty Svartisen glacier, Norway's second biggest, pours down the mountain almost to Svartisvatnet lake. The glacier visitor centre is a fascinating place with access to hikes along the edge of the ice flow, up to 200 m thick. Glorious Holandsfjord is just the other end of a short channel from the lake and the ship has stirring views. The little village of Holandsvika sits across the fjord, with an 18-km lakeside path and boat trips.

Day 10 - Reine & Trollfjorden

With red fishermen's cabins nestled on the shores of Reinefjord amid dramatic granite peaks, Reine is celebrated as one of the world's most beautiful places. The village serves as a starting point for hikes like the Reinebringen trail, offering panoramic views of the vertical granite Lofoten Islands rising from the Arctic Sea. Nearby, the fishing village of A houses the Norwegian Fishing Village Museum.

Trollfjorden is unbelievable. A 100m-wide entrance to a narrow fjord with near-vertical mountainous sides up to 1,100 m high, the passage slices through Austvagoya, on the edge of the Lofoten Islands. As the ship enters the fjord, the silence is only broken by the gentle sound of the ship's engines and the



The Small Cruise Ship Collection

www.small-cruise-ships.com

01432 507 280 (within UK)

info@small-cruise-ships.com | small-cruise-ships.com



occasional cry of a white-tailed eagle soaring overhead. At the end of the fjord, the ship slowly spins, offering a final captivating view.

Day 11 - Tromso

The Arctic gateway, Tromso at 69 degrees north, is renowned for the midnight sun in summer and the Northern Lights in winter. The Arctic Cathedral, with stained-glass windows, hosts midnight concerts. The Fjellheisen cable car offers panoramic views from Mount Storsteinen, while the historic centre features old wooden houses. The Polar Museum chronicles early polar explorations, and the thriving Alpine Botanic Garden adds to Tromso's charm.



The Small Cruise Ship Collection

www.small-cruise-ships.com



small-cruise-ships.com

info@small-cruise-ships.com

YOUR SHIP: DIANA

YOUR SHIP: Diana

VESSEL TYPE:

LENGTH:

PASSENGER CAPACITY:

BUILT/REFURBISHED:

Launched in 2023, SH Diana provides elegant and spacious 5-star accommodation for 192 guests in 96 spacious staterooms and suites, the vast majority with large balconies. Operated by an onboard team of 140 she provides a high level of personal service, exploring the Mediterranean and its famous sites of antiquity. Now sit back, relax and take a moment to get to know this amazing new ship, purpose-designed for our unique cultural expedition cruises. Named after the Ancient Roman goddess of light, the moon, hunting and the wilderness, SH Diana has been specially designed for worldwide cruising to explore the most inspiring and inaccessible places on earth. Building on the outstanding amenities of her sister ships, she adds a dedicated Multifunctional Room next to the Observation Lounge, a Private Dining Room for special occasions, and two tenders which bring guests a comfortable alternative to Zodiacs for expedition landings. A Polar Class 6 ice-strengthened hull combines with extra-large stabilisers to make your journey as comfortable as possible. SH Diana has been designed for immersive experiences, with extensive outside deck areas, multiple observation points and bright, open and relaxing public spaces with unobstructed views. The pleasure and safety of our

guests is paramount at all times, cared for by our attentive crew and seasoned expedition leaders. Cutting edge hygiene technology protects the health of all on board to the highest standards and includes air conditioning with UV sanitisation systems. SH Diana's 96 staterooms, including 11 suites, are each a superbly comfortable home from home and all feature panoramic sea views, a flame-effect fireplace, original works of art, plush couches, premium pocket sprung mattresses, en-suite bathrooms with glass-enclosed rain showers, and Egyptian cotton towels, bathrobes and sheets. A pillow menu offers customised head and neck comfort during rest, while a large flat screen TV, espresso machine with Illy premium coffee, tea making facilities with the finest Kusmi teas, and a minibar with refreshments enhance relaxation at any time. In-room dining is of course available at all hours. Wheelchair access Guests who use wheelchairs must bring their own, as we have only a small number of wheelchairs stored onboard for emergencies. To ensure ease of movement on the ship, wheelchairs and mobility aids must be no wider than 65cm. All mobility or medical equipment brought on board must be capable of being carried safely and must be declared before sailing. To ensure that all guests can safely evacuate during an emergency, guests requiring a wheelchair can only be accommodated in our ADA-accessible cabins. We offer an Oceanview and a Balcony stateroom on Diana. These staterooms are specifically designed to be completely ADA compliant and have a fully operable wheelchair-access wet unit. Diana has two lifts, serving every passenger deck apart from the Stargazing top deck, which is, therefore, more difficult to access, as are the Aft Marina and



The Small Cruise Ship Collection

www.small-cruise-ships.com

01432 507 280 (within UK)

info@small-cruise-ships.com | small-cruise-ships.com



Swan's Nest forward observation platform. Also, we don't have special equipment to access the swimming pool, jacuzzi, or sauna. Otherwise, the ship is entirely at your disposal. Many of the expeditions ashore in remote places are by Zodiac. Boarding these boats and returning aboard can present challenges for wheelchair users, as can navigating uneven terrain. These challenges are by no means always insurmountable, though, and our highly experienced crew is trained to provide reliable advice and assistance. They will make every effort to ensure wheelchair-using guests enjoy a memorable experience at each destination. Our general guidance, however, is to recommend wheelchair users travel with a companion for their ease and enjoyment. If you prefer to remain aboard, our panoramic interiors and ample open decks ensure an immersive, intimate experience of your inspiring



surroundings.

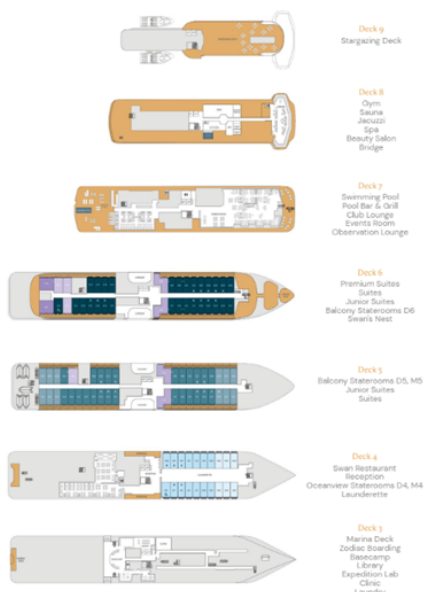
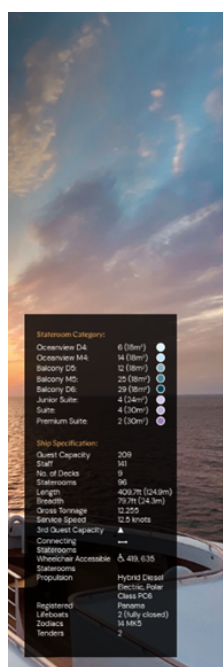
The Small Cruise Ship Collection

www.small-cruise-ships.com

small-cruise-ships.com

info@small-cruise-ships.com

INSIDE YOUR SHIP



Balcony D5 - from



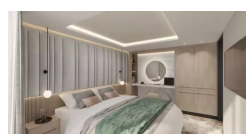
Balcony D6 - from



Balcony M5 - from



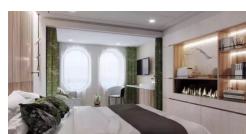
Junior Suite - from



Oceanview D4 - from



Oceanview M4 - from



Premium Suite - from

Suite - from



The Small Cruise Ship Collection

www.small-cruise-ships.com



small-cruise-ships.com

info@small-cruise-ships.com

PRICING

25-May-2026 to 04-Jun-2026

Junior Suite - from	£11680 GBP pp
Balcony D6 - from	£10080 GBP pp
Balcony M5 - from	£9680 GBP pp
Balcony D5 - from	£9280 GBP pp
Oceanview M4 - from	£8180 GBP pp
Oceanview D4 - from	£7780 GBP pp
Suite - from	£13580 GBP pp
Premium Suite - from	£15580 GBP pp



The Small Cruise Ship Collection

www.small-cruise-ships.com

01432 507 280 (within UK)

info@small-cruise-ships.com | small-cruise-ships.com