



## EXPLORE THE LUSH BEAUTY OF THE CANARY ISLANDS ON A BRIEF SAILING ADVENTURE

This short Canary Islands circuit combines concentrated sailing with intense natural variety. From Gran Canaria, the route touches Tenerife's dramatic volcanic landscapes shaped by Mount Teide, then continues to El Hierro, a remote island defined by raw geology, quiet villages, and nature-first living. La Gomera adds deep green contrasts with its cloud-fed laurel forests and rich marine life offshore, where whales and dolphins are frequently sighted. The voyage returns to Gran Canaria having traced a compact arc through some of the archipelago's most unspoiled and geologically expressive islands.



### ITINERARY

Day 1 Las Palmas, Gran Canaria

With its black volcano almost 6,561 feet high and endless white beaches along the coastline, the island of Gran Canaria displays a huge variety of landscapes. It's a "continent in miniature" with rugged rock formations, dense pine forests, dry valleys and reservoirs inland, lush vegetation in the north, shimmering dune landscapes in the south and weirdly shaped cliffs in the west. Almost half the island has been registered by UNESCO as a



## The Small Cruise Ship Collection

[www.small-cruise-ships.com](http://www.small-cruise-ships.com)

[small-cruise-ships.com](http://small-cruise-ships.com)

[info@small-cruise-ships.com](mailto:info@small-cruise-ships.com)

Biosphere Reserve. The capital, Las Palmas, is no less colorful, with its port and history stretching back 500 years. The showpiece of this historic old town is the magnificent Santa Ana Cathedral.

### Day 2 Santa Cruz, Tenerife

Santa Cruz is the perfect starting point if you want to discover Tenerife's diverse mix of beach, nature, and avant-garde culture. The capital and port city in the northeast of the island is not only decked out with historic buildings but also features a lively art scene and spectacular modern architecture by Calatrava or Herzog, and De Meuron. Santa Cruz is also not far from other highlights in the north. For example, the lively colonial town of La Laguna, with its impressive mansions, or quaint Taganana in the Agana Landscape Park, which has retained the charm of an old mountain village.

### Day 3 Puerto de la Estaca, El Hierro

Volcanic activity has created a wildly romantic and varied natural landscape. It's a land of black lava desert and strange rock formations with oddly shaped, wind-defying juniper trees in the south, orchards, vineyards, fig and almond groves in the north, lush green meadows and pastures in the high plateaus, and perhaps the most beautiful pine forests in the archipelago. El Hierro, the smallest and newest of the Canary Islands, is almost completely edged with steeply sloping, rugged cliffs and the spray from the surging ocean. UNESCO has designated it a Biosphere Reserve.

### Day 4 San Sebastián, La Gomera

Many people consider La Gomera to be the most wildly romantic island in the Canaries. Rugged gorges, craggy hillsides, fertile valleys and evergreen cloud forests characterize the landscape. The Garajonay National Park, a UNESCO World Heritage Site, embraces the whole central mountain area and is an unusual little spot. Ancient bay trees, heather bushes as high as trees and tall ferns form a cloud forest where moss hangs from the trees and clings to gnarled branches - a truly mystical natural wonder that has existed for millions of years.

### Day 5 Las Palmas, Gran Canaria

With its black volcano almost 6,561 feet high and endless white beaches along the coastline, the island of Gran Canaria displays a huge variety of landscapes. It's a "continent in miniature" with rugged rock formations, dense pine forests, dry valleys and reservoirs inland, lush vegetation in the north, shimmering dune landscapes in the south and weirdly shaped cliffs in the west. Almost half the island has been registered by UNESCO as a Biosphere Reserve. The capital, Las Palmas, is no less colorful, with its port and history stretching back 500 years. The showpiece of this historic old town is the magnificent Santa Ana Cathedral.

Please note:

Itineraries are subject to change.

The Small Cruise Ship Collection

[www.small-cruise-ships.com](http://www.small-cruise-ships.com)

01432 507 280 (within UK)

[info@small-cruise-ships.com](mailto:info@small-cruise-ships.com) | [small-cruise-ships.com](http://small-cruise-ships.com)



# The Small Cruise Ship Collection

www.small-cruise-ships.com

small-cruise-ships.com

info@small-cruise-ships.com

## YOUR SHIP: SEA CLOUD II

<b>YOUR SHIP:</b>	<b>Sea Cloud II</b>
<b>VESSEL TYPE:</b>	<b>Tall Ship (Sailing)</b>
<b>LENGTH:</b>	<b>105 metres</b>
<b>PASSENGER CAPACITY:</b>	<b>96</b>
<b>BUILT/REFURBISHED:</b>	<b>2001</b>

Launched in 2001, Sea Cloud II is a stunning vessel, built along traditional lines, but offering deluxe accommodation. She combines timeless elegance of sailing ships of the past with the highest safety standards and the luxurious comfort of modern cruise ships. Just like her legendary sister ship Sea Cloud, the 29,600 square feet of sails is set by hand which is a truly magical sight. Built to accommodate 96 passengers in five star luxury, she offers a range of beautifully appointed suites and cabins which are furnished with great style. All accommodations have outside views and the bathrooms, in light marble, are unusually spacious and extremely comfortable. The finest, carefully chosen fabrics, combined with leather, rattan and other materials, brass and gold, precious woods and marble together create an impressive ensemble. No expense has been spared to create a sympathetic ambience in both the accommodations and public areas and this is reflected throughout the vessel. Public areas include an elegant lounge, library, fitness centre, boutique, lido bar and hospital. The single sitting dining room is airy and modern and the quality of the cuisine and service will be to the highest of standards, as one would expect on a Sea Cloud cruise. Relax on the Lido deck and experience the natural

grandeur of travelling under sail, rekindling memories of a



bygone age.

The Small Cruise  
Ship Collection  
www.small-cruise-ships.com

01432 507 280 (within UK)

info@small-cruise-ships.com | small-cruise-ships.com

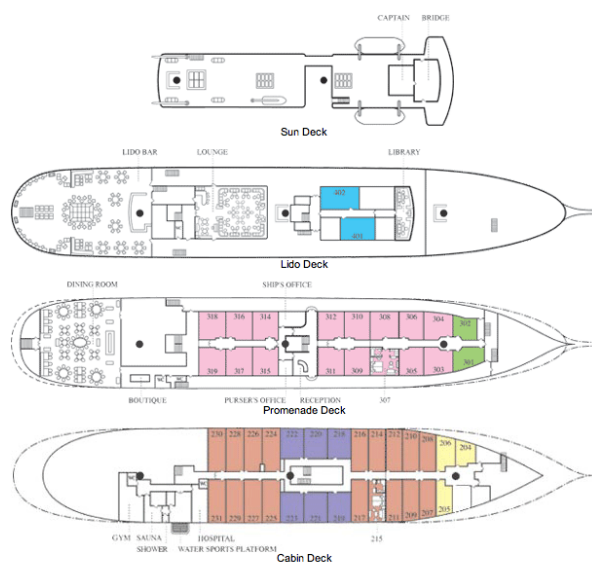
# The Small Cruise Ship Collection

www.small-cruise-ships.com

small-cruise-ships.com

info@small-cruise-ships.com

## INSIDE YOUR SHIP



Please note that category F cabins have one lower and one upper berth bed

Key  
 Cat A Cat B Cat C  
 Cat D Cat E Cat F

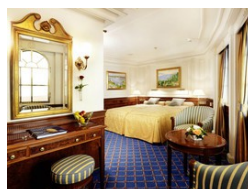
Category A. From



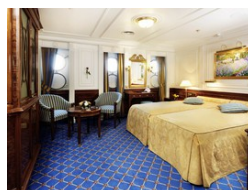
Category B. From



Category C. From



Category D. From



Category E. From

Category F Upper/Lower Beds. From

The Small Cruise Ship Collection  
 www.small-cruise-ships.com

01432 507 280 (within UK)

info@small-cruise-ships.com | small-cruise-ships.com





## The Small Cruise Ship Collection

[www.small-cruise-ships.com](http://www.small-cruise-ships.com)

[small-cruise-ships.com](http://small-cruise-ships.com)

[info@small-cruise-ships.com](mailto:info@small-cruise-ships.com)

## PRICING

16-Nov-2027 to 20-Nov-2027

Category F Upper/Lower Beds. From	£2189 GBP pp
Category E. From	£2509 GBP pp
Category D. From	£2929 GBP pp
Category C. From	£3055 GBP pp
Category B. From	£3375 GBP pp
Category A. From	£3875 GBP pp



The Small Cruise  
Ship Collection

[www.small-cruise-ships.com](http://www.small-cruise-ships.com)

01432 507 280 (within UK)

[info@small-cruise-ships.com](mailto:info@small-cruise-ships.com) | [small-cruise-ships.com](http://small-cruise-ships.com)