



The Small Cruise
Ship Collection

www.small-cruise-ships.com

small-cruise-ships.com

info@small-cruise-ships.com

EXPEDITION VANUATU AND SOLOMON ISLANDS

This cruise sparks a passion for discovery with a premiere voyage through remote Pacific paradises, blending the exotic and uncharted beauty of two pristine island groups--Vanuatu and the Solomon Islands. Highlights include authentic, immersive encounters with enigmatic cultures untouched by time, a Robinson Crusoe-inspired adventure with Zodiac landings on seldom-visited shores, and serene moments of relaxation swimming and snorkelling along white sandy beaches. From New Caledonia's Île des Pins to Fiji's Sawa-i-lau, this journey offers a rare, in-depth exploration of diverse, off-the-grid destinations teeming with natural and cultural wonders.



ITINERARY

Fri, 03.04.2026 Noumea/New Caledonia

Departure 23.00 hrs

Sat, 04.04.2026 Ile des Pins/New Caledonia

Île des Pins, or Isle of Pines, is an idyllic paradise in New Caledonia. As well as white sandy beaches and turquoise lagoons, its unique rock formations in the sea are also impressive, such as the famous "Natural Pool". These natural pools are surrounded by bizarre rocks and offer a magical swimming experience. Discover the unspoilt beauty of this tropical gem and experience the stunning harmony between land and sea here.

Sun, 05.04.2026 Mare/Loyalty Islands



The Small Cruise
Ship Collection

www.small-cruise-ships.com

01432 507 280 (within UK)

info@small-cruise-ships.com | small-cruise-ships.com



The Small Cruise Ship Collection

www.small-cruise-ships.com



small-cruise-ships.com

info@small-cruise-ships.com

Mon, 06.04.2026 - Thu, 09.04.2026 Vanuatu

(including Tanna, Ambrym, Pentecost, Espiritu Santo)

Fri, 10.04.2026 Relaxation at sea

Sat, 11.04.2026 - Fri, 17.04.2026 Salomon Islands

(including Santa Ana Island , Honiara, Roderick Bay , Pirumeri Island , Russell Islands , Nendo)

Sat, 18.04.2026 - Sun, 19.04.2026 Relaxation at sea

Mon, 20.04.2026 Sawa-i-lau/Fiji

Tue, 21.04.2026 Lautoka/Fiji

Arrival 7.00 hrs

Please note:

Itineraries are subject to change.



The Small Cruise Ship Collection

www.small-cruise-ships.com



small-cruise-ships.com

info@small-cruise-ships.com

YOUR SHIP: HANSEATIC INSPIRATION

YOUR SHIP: Hanseatic Inspiration

VESSEL TYPE:

LENGTH:

PASSENGER CAPACITY:

BUILT/REFURBISHED:

The HANSEATIC inspiration, a small, state-of-the-art expedition ship with a maximum of 230 guests, offers a perfect blend of adventure and comfort for explorers seeking to uncover the world's wonders. As an international vessel conducting cruises in both English and German, it brings over 30 years of expertise from a market leader in German-speaking countries to every journey. Each expedition is a masterpiece, passionately crafted to reveal far-flung worlds--be it icy realms, tropical paradises, wildlife havens, or cultural gems--making every voyage a unique discovery aboard this exceptional ship. Features of all cabins and suites An ocean view with even more: exclusively outside cabins and suites, almost all with balconies or French balconies Spaciously designed - enjoy a relaxing stay in rooms from 21 m²/226 ft² up to 71 m²/764 ft² in size Exceptionally equipped - for example, with binoculars, Nordic Walking poles, air conditioning, coffee machine and mini bar (free of charge) and 24-hour cabin service Separable beds Rain shower and heated wall in bathroom (e.g. for towels and wet parkas) Extensive infotainment with live broadcast and recordings of expert presentations, forwardview camera, navigation chart, films and much more Restaurants Aboard the HANSEATIC inspiration, a

new kind of freedom blends adventure and pleasure with a culinary journey across three exceptional restaurants. The spacious HANSEATIC Restaurant offers flexible mealtimes and a free choice of seating, serving a daily-changing menu of global flavors inspired by local specialties, paired with fine wines and supported by attentive 24-hour cabin service. At the Lido Restaurant, guests can savor breakfast under the open sky or enjoy a perfectly grilled steak from the outdoor barbecue, complete with panoramic views and an open show kitchen. The specialty restaurant Nikkei fuses fine Japanese creations with modern Peruvian cuisine, delivering a unique dining experience that elevates exploration to new heights--all while bars in the Observation Lounge and HanseAtrium offer favorite drinks against stunning backdrops, from Nordic fjords to icy Antarctic vistas. Fitness and Wellness On the HANSEATIC inspiration, an extraordinary time out awaits after thrilling Zodiac rides, challenging hikes, or Arctic adventures. Unwind in the Ocean Spa, where a Finnish sauna with stunning ocean views, a gentle steam sauna, an ice fountain, and a relaxation room rejuvenate your senses, complemented by professional massages, cosmetic treatments, and eco-friendly products made from natural, vegan ingredients. Stay active in the 100 m² fitness room or separate course room--both with ocean vistas--guided by a fitness coach offering personalized advice and a variety of courses, either indoors or on deck. The pool area, with its flexible canopy, invites relaxation year-round, featuring water loungers, a whirlpool, and a bar, ensuring a perfect blend of indulgence and revitalization against the backdrop of the open sea. Knowledge Shore excursions and Zodiac rides come alive



The Small Cruise Ship Collection

www.small-cruise-ships.com

01432 507 280 (within UK)

info@small-cruise-ships.com | small-cruise-ships.com



The Small Cruise Ship Collection

www.small-cruise-ships.com



small-cruise-ships.com

info@small-cruise-ships.com

with deeper context through fascinating presentations in the HanseAtrium, a high-tech lounge where experts share daily precaps and recaps, doubling as an atmospheric evening bar for films and discussions. The Ocean Academy enhances the journey with a Study Wall and interactive poster of scientific insights, microscopes for exploring hidden wonders alongside experts, and Study Seats--with swivel touchscreens--for personal dives into science. Supported by travel diaries and destination videos, this immersive experience broadens horizons with cutting-edge tools and



expertise.



The Small Cruise Ship Collection

www.small-cruise-ships.com

01432 507 280 (within UK)

info@small-cruise-ships.com | small-cruise-ships.com



The Small Cruise
Ship Collection

www.small-cruise-ships.com

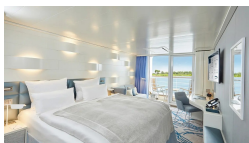


small-cruise-ships.com

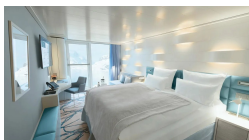
info@small-cruise-ships.com

INSIDE YOUR SHIP

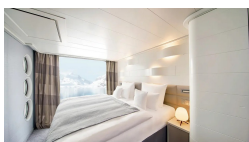
Balcony Cabin



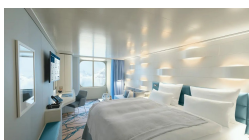
French Balcony Cabin



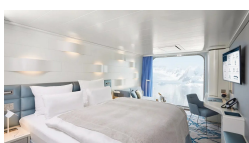
Junior Suite



Outside Cabin



Panoramic Cabin



The Small Cruise
Ship Collection

www.small-cruise-ships.com

01432 507 280 (within UK)

info@small-cruise-ships.com | small-cruise-ships.com



The Small Cruise Ship Collection

www.small-cruise-ships.com



small-cruise-ships.com

info@small-cruise-ships.com

PRICING

03-Apr-2026 to 21-Apr-2026

Panoramic Cabin	£11042 GBP pp
Outside Cabin	£11042 GBP pp
French Balcony Cabin	£11466 GBP pp
Balcony Cabin	£11892 GBP pp
Junior Suite	£17926 GBP pp



The Small Cruise Ship Collection

www.small-cruise-ships.com

01432 507 280 (within UK)

info@small-cruise-ships.com | small-cruise-ships.com