



The Small Cruise
Ship Collection

www.small-cruise-ships.com

small-cruise-ships.com

info@small-cruise-ships.com

EXPEDITION SEMI-CIRCUMNAVIGATION OF ANTARCTICA: ONE OF THE GREATEST FEATS OF OUR TIME

Glittering icebergs, mighty glacier panoramas - where other ships have to give up, the adventure is only just beginning for you. The semi-circumnavigation of Antarctica is something very special for those in search of an unforgettable, historic expedition.



The Small Cruise
Ship Collection

www.small-cruise-ships.com

01432 507 280 (within UK)

info@small-cruise-ships.com | small-cruise-ships.com

The Small Cruise Ship Collection

www.small-cruise-ships.com

small-cruise-ships.com

info@small-cruise-ships.com



ITINERARY

Mon, 01.02.2027 Charter flight from Buenos Aires to Ushuaia

Ushuaia/Argentina, departure 18.00 hrs

Tue, 02.02.2027 Sailing through the Drake Passage

Wed, 03.02.2027 - Mon, 08.02.2027 South Shetland Islands , Antarctic Peninsula , crossing the Antarctic Circle, Marguerite Bay

The South Shetland Islands form a long chain in the ocean. The island group opens up exciting chapters of Antarctic exploration and provides expert insights into geology. Here, your small manoeuvrable ship can again prove its expedition capability when it sails into the flooded caldera of the extinct volcano that forms Deception Island. Flanked by rock faces up to 50 m (164 ft) in height, the black sand in front of you gives off steam as a testament to a past eruption - and you in the heart of the scenery. You, too, will be enchanted by the scenery: jagged crags loom fiercely on the horizon and the evening sun casts a

delicate pink glow over the snowfields.

The Antarctic Peninsula, part of the coldest continent on Earth, may seem inhospitable at first glance, but it is actually a paradise for countless animal species that have adapted perfectly. Enjoy unforgettable moments when, for example, you set foot on the Antarctic mainland near to Paradise Bay. Snow-covered peaks, imposing icebergs and towering glaciers surround you. Unbelievable views also await you in the bay of Neko Harbor with its rocky massifs. The monumental dimensions are emphasised by Petermann Island: the rocky and partly glaciated land mass is located at the southern end of the narrow Lemaire Channel lined with high cliffs. Mountains up to 1,000 m (3,280 ft) high line the strait of water, which is regarded as one of the most impressive shipping passages in the world. The Neumayer Channel provides panoramic views of glaciers that are no less breathtaking. This experience is accompanied by the cries of countless Dominican gulls, Cape petrels and snow petrels.

As the ship heads south, the endless white seems increasingly rough and icy. The excitement on board mounts as you approach the crossing of the Antarctic Circle - a unique feeling of pioneering adventure. How far can the ship advance? Thick ice fields and icebergs are a common sight here and the glaciers seem more dominant. In this challenging region, the experience and flexibility of the captain and crew are needed more than ever.

With the highest ice class for passenger ships, the ship can forge its way to the most beautiful and rarely visited regions such as Marguerite Bay. A steep mountain panorama, possibly



covered in fresh snow, as well as vast snowfields and glaciers spread out before you. On Zodiac rides and hikes with your experts, you will gain insights into a world of ice that few have experienced. Simply magical.

Tue, 09.02.2027 - Wed, 17.02.2027 Relaxation at sea

(cruise through Bellingshausen Sea, Amundsen Sea and Ross Sea - 17.02 will be lost due to crossing the International Date Line)

The next few days in the southernmost regions of the world will be devoted to the golden age of Antarctic exploration. This is not a route from A to B - it is a way to rediscover Antarctica in the tradition of legendary explorers. Your cruise will be enriched by knowledge gained from the multimedia Ocean Academy and from the specialist literature in the extensive on-board library. Simply incredible - the Bellingshausen Sea covers an area of several hundred square kilometres and is around 4,000 m (13,123 ft) deep. Allow this wide open expanse to inspire you to deep relaxation: whether in the OCEAN SPA or with exceptional culinary creations by our top chefs. In the Amundsen Sea, the life story of polar explorer Roald Amundsen will be brought to life when expert presentations on board provide you with interesting insights into the pioneering feats of many legendary explorers. Many years ago, they took to the seas to travel to this remote region without modern technology, putting their lives on the line - and they may well have been just as impressed as you are by similar views. You will feel like you are part of the natural surroundings on the Observation Deck with various observation levels, as well as in the Observation Lounge, thanks to the

180-degree view through the floor-to-ceiling windows. The excitement builds on board: what are the ice conditions on the Ross Sea? How will the natural surroundings look? Can the captain push through the pack ice and drifting ice to reach seldom-visited regions? If all goes to plan, you will experience unforgettable and moving moments.

Thu, 18.02.2027 - Tue, 23.02.2027 Ross Island , Terra Nova Bay , Victoria Land

The season is ideal, the timing perfect - your ship will attempt to make its way through the pack ice and drifting ice to get to Ross Island. You can expect to see whales and emperor penguins in this region. If the weather and ice conditions allow us to land, you will be able to visit legendary places such as Cape Royds: the spot where Sir Ernest Shackleton set up a base camp for his South Pole expedition in 1908 is now home to penguins. Cape Evans, by contrast, set the scene for the Terra Nova expedition led by Robert Falcon Scott, who attempted to beat Roald Amundsen to the South Pole. Find out more about today's research in the area at the American McMurdo Station, the largest research station in the Antarctic (subject to authorisation). In the shadow of the modern building and the mighty Mount Erebus stands the Discovery hut built by Scott in 1902.

Terra Nova Bay was named after the ship that Scott was sailing in when he discovered the bay in 1901. It is now home to an Italian research station. On his expedition, Scott came across the enormous Drygalski Ice Tongue: at between 14 and 24 km (8.7 to 14.9 miles) wide and around 50 km (31 miles) long, this wall of ice will seem particularly impressive from the



Zodiacs. Will the coast in this area be surrounded by thick pack ice? If a landing with the Zodiacs is possible, you will be able to walk through this mystical landscape with your experts. You might also come across penguins, which will be just as curious as you are.

As you cruise in front of the fantastic backdrop of the Ross Ice Shelf, you will experience another indescribable highlight: the gigantic wall of ice as tall as houses stretches for hundreds of kilometres. Victoria Land, on the other hand, welcomes you with an endless expanse. At Cape Adare, you will find the ruins of a hut that Borchgrevink built in 1899 and in which an expedition team spent a winter in Antarctica for the first time. The spectacular wildlife here is just as moving as the region's past - including the largest colony of Adelie penguins in Antarctica with over 250,000 breeding pairs.

[Wed, 24.02.2027 Relaxation at sea](#)

[Thu, 25.02.2027 Cruising off the Balleny Islands/New Zealand](#)

On your cruise, you will come across untouched island worlds with a rich fauna that are hardly known in our latitudes. Nature conservation is playing an increasingly important role in their preservation, which is why permits are becoming more and more complex. Destinations in New Zealand depend on whether the authorities grant their permission. If they give the green light, you will be able to enjoy mystical views when cruising off the Balleny Islands, as steep cliffs rise suddenly from the sea. And colonies of Adelie and chinstrap penguins fill the largely glaciated island group with life. With a small circle of like-minded people, your goal is to discover these paradises

and develop a special awareness and appreciation for them.

[Fri, 26.02.2027 - Sat, 27.02.2027 Relaxation at sea](#)

[Sun, 28.02.2027 - Tue, 02.03.2027 Cruising off the Subantarctic Islands of New Zealand](#)

New Zealand's Subantarctic Islands seem to have been forgotten by the rest of the world. Their wildly romantic, unspoilt landscapes are a UNESCO World Heritage Site and enjoy the highest protection of any nature reserves in New Zealand. Landings depend on authorisation from the authorities, who aim to keep the islands free from invasive species. Thanks to your small, manoeuvrable expedition ship, you will be able to cruise as close to the coastline as the authorities allow. Heather and wild flowers give Campbell Island a special kind of charm. The island is home to the world's largest breeding colony of southern royal albatrosses. The Auckland Islands are not only home to yellow-eyed penguins and New Zealand sea lions, they also have the lushest flora of all the islands. The Snares penguin, meanwhile, is only found on the Snares Islands, alongside Cape petrels and albatrosses.

[Wed, 03.03.2027 Stewart Island](#)

Peaks rising up to almost 1,000 m (3,280 ft), eight different ecosystems, 245 km (152 miles) of hiking paths: the mountainous Rakiura National Park on Stewart Island is home to age-old flora and fauna. New Zealand's third largest island is a paradise for hiking and birdwatching with your experts. There are more kiwis than people living here and the chances of



seeing these shy birds are high - maybe feeding on the beach. In the forests, you might also spot tomtits, fantails, parrots and parakeets. Silence and solitude, clean air and birdsong make the islands a special experience for all the senses. As well as the diversity of birdlife, Maori sites will also draw you under their spell. What will impress you the most? One thing is for certain: by making this semi-circumnavigation of the Antarctic, you will be one of the few people who have delved deep into the secrets of these remote regions.

Thu, 04.03.2027 Relaxation at sea

Fri, 05.03.2027 Lyttelton (Christchurch)/New Zealand

Arrival 06.00 hrs

Please Note:

Itineraries are subject to change.



The Small Cruise Ship Collection

www.small-cruise-ships.com

small-cruise-ships.com

info@small-cruise-ships.com

YOUR SHIP: HANSEATIC INSPIRATION

YOUR SHIP: Hanseatic Inspiration

VESSEL TYPE:

LENGTH:

PASSENGER CAPACITY:

BUILT/REFURBISHED:

The HANSEATIC inspiration, a small, state-of-the-art expedition ship with a maximum of 230 guests, offers a perfect blend of adventure and comfort for explorers seeking to uncover the world's wonders. As an international vessel conducting cruises in both English and German, it brings over 30 years of expertise from a market leader in German-speaking countries to every journey. Each expedition is a masterpiece, passionately crafted to reveal far-flung worlds--be it icy realms, tropical paradises, wildlife havens, or cultural gems--making every voyage a unique discovery aboard this exceptional ship. Features of all cabins and suites An ocean view with even more: exclusively outside cabins and suites, almost all with balconies or French balconies Spaciously designed - enjoy a relaxing stay in rooms from 21 m²/226 ft² up to 71 m²/764 ft² in size Exceptionally equipped - for example, with binoculars, Nordic Walking poles, air conditioning, coffee machine and mini bar (free of charge) and 24-hour cabin service Separable beds Rain shower and heated wall in bathroom (e.g. for towels and wet parkas) Extensive infotainment with live broadcast and recordings of expert presentations, forwardview camera, navigation chart, films and much more Restaurants Aboard the HANSEATIC inspiration, a

new kind of freedom blends adventure and pleasure with a culinary journey across three exceptional restaurants. The spacious HANSEATIC Restaurant offers flexible mealtimes and a free choice of seating, serving a daily-changing menu of global flavors inspired by local specialties, paired with fine wines and supported by attentive 24-hour cabin service. At the Lido Restaurant, guests can savor breakfast under the open sky or enjoy a perfectly grilled steak from the outdoor barbecue, complete with panoramic views and an open show kitchen. The specialty restaurant Nikkei fuses fine Japanese creations with modern Peruvian cuisine, delivering a unique dining experience that elevates exploration to new heights--all while bars in the Observation Lounge and HanseAtrium offer favorite drinks against stunning backdrops, from Nordic fjords to icy Antarctic vistas. Fitness and Wellness On the HANSEATIC inspiration, an extraordinary time out awaits after thrilling Zodiac rides, challenging hikes, or Arctic adventures. Unwind in the Ocean Spa, where a Finnish sauna with stunning ocean views, a gentle steam sauna, an ice fountain, and a relaxation room rejuvenate your senses, complemented by professional massages, cosmetic treatments, and eco-friendly products made from natural, vegan ingredients. Stay active in the 100 m² fitness room or separate course room--both with ocean vistas--guided by a fitness coach offering personalized advice and a variety of courses, either indoors or on deck. The pool area, with its flexible canopy, invites relaxation year-round, featuring water loungers, a whirlpool, and a bar, ensuring a perfect blend of indulgence and revitalization against the backdrop of the open sea. Knowledge Shore excursions and Zodiac rides come alive

The Small Cruise Ship Collection
www.small-cruise-ships.com

01432 507 280 (within UK)

info@small-cruise-ships.com | small-cruise-ships.com



with deeper context through fascinating presentations in the HanseAtrium, a high-tech lounge where experts share daily precaps and recaps, doubling as an atmospheric evening bar for films and discussions. The Ocean Academy enhances the journey with a Study Wall and interactive poster of scientific insights, microscopes for exploring hidden wonders alongside experts, and Study Seats--with swivel touchscreens--for personal dives into science. Supported by travel diaries and destination videos, this immersive experience broadens horizons with cutting-edge tools and



expertise.



The Small Cruise Ship Collection

www.small-cruise-ships.com

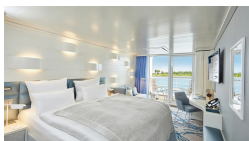


small-cruise-ships.com

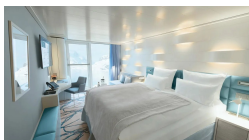
info@small-cruise-ships.com

INSIDE YOUR SHIP

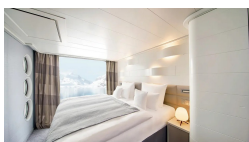
Balcony Cabin



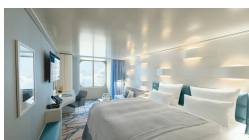
French Balcony Cabin



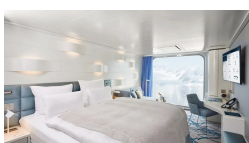
Junior Suite



Outside Cabin



Panoramic Cabin



The Small Cruise Ship Collection

www.small-cruise-ships.com

01432 507 280 (within UK)

info@small-cruise-ships.com | small-cruise-ships.com



The Small Cruise Ship Collection

www.small-cruise-ships.com



small-cruise-ships.com

info@small-cruise-ships.com

PRICING

01-Feb-2027 to 04-Mar-2027

Outside Cabin	£24386 GBP pp
Panoramic Cabin	£25704 GBP pp
French Balcony Cabin	£27684 GBP pp
Balcony Cabin	£29980 GBP pp
Junior Suite	£38862 GBP pp



The Small Cruise Ship Collection

www.small-cruise-ships.com

01432 507 280 (within UK)

info@small-cruise-ships.com | small-cruise-ships.com