

The Small Cruise Ship Collection

www.small-cruise-ships.com

small-cruise-ships.com

info@small-cruise-ships.com

EXPEDITION KIMBERLEY: A REGION OF SUPERLATIVES IN DOWN UNDER

Australia's Kimberley region is difficult to access - and that's precisely what makes it so fascinating. On this premiere cruise with the HANSEATIC spirit, you will discover ancient landscapes, unique wildlife and the vibrant culture of the Aborigines.



ITINERARY

Day 1 Darwin/Australia, departure 24.00 hrs

Day 2 Relaxation at sea

Day 3 Montgomery Reef/Kimberley/Australia

Off the Kimberley coast lies the impressive Montgomery Reef, Australia's largest tidal reef with a tidal range of around 10 m (32 ft). At low tide, parts of the reef of approximately 300 km²

The Small Cruise Ship Collection
www.small-cruise-ships.com

01432 507 280 (within UK)

info@small-cruise-ships.com | small-cruise-ships.com



The Small Cruise Ship Collection

www.small-cruise-ships.com

small-cruise-ships.com

info@small-cruise-ships.com

(115 mi.²) become visible - a stunning natural spectacle. When the water level drops, countless waterfalls flow over the edges of the coral platform into the remaining channels. You will travel along these waterways in a Zodiac and, depending on local conditions, experience this unique phenomenon up close. A vibrant underwater world unfolds among the corals. Keep an eye out for turtles, blacktip reef sharks, manta rays, dugongs and dolphins, which roam the shallow waters depending on the season. A fascinating spectacle that combines tidal forces and wildlife observation.

Day 4 Broome/Kimberley/Australia, 13.30 - 17.30 hrs

The pearl industry once brought wealth and worldwide fame to the town of Broome. The Aborigines were already diving for pearls here until the region became a centre for international pearl fishing in the 19th century, attracting people from Japan, Malaysia and Europe. Today, these precious gems come from modern pearl farms, which is why Broome is still considered the "pearl capital of Australia". Its multicultural character is also reflected in the cityscape - for example, in historic Chinatown. But Broome also attracts visitors with another gem: Cable Beach - 22 km (13.7 mi.) of dazzling white sand, bordered by the Indian Ocean. In 1989, a telegraph cable was laid from this stretch of coast to Java, giving the famous beach its name.

Day 5 Relaxation at sea

Days 6 - 10 Western Australia/Australia (Exmouth, Shark Bay, Houtman Abrolhos, relaxation at sea, Montebello Islands)

Western Australia, Australia's largest state, covers a third of the continent and connects endless coastlines, red desert landscapes and lush forests between the Indian Ocean and the outback. Aboriginal life, mysterious natural wonders, encounters with wild animals and colonial history are just some of the adventures that Western Australia has to offer.

The small coastal town of Exmouth is the gateway to the Ningaloo Reef - one of the largest and most species-rich coral reefs in the world. Directly accessible from the beach, it is a paradise for snorkellers and divers, visited by whale sharks, manta rays, humpback whales and sea turtles. Equally fascinating experiences await ashore: soak up the town's outback atmosphere or take a tour* to explore the rust-red rock formations of Cape Range National Park, home to giant kangaroos, echidnas and emus.

Up close with Australia's marine world: Shark Bay, a UNESCO World Heritage Site, boasts impressive turquoise-coloured waters and white sands. The Zodiacs take you ashore - you may spot wild dolphins on the way, and with a bit of luck, dugongs, sea turtles, rays and sharks may also make an appearance. A highlight awaits you in the coastal area of Hamelin Pool: stromatolites. These structures, formed by microorganisms, are among the oldest-known life forms on Earth and provide a glimpse into the early history of our planet.

The Houtman Abrolhos are a mosaic of more than 120 islands. The name "Abrolhos" probably comes from the Portuguese "Abre os olhos" - "Open your eyes". What was originally a warning to sailors about the reefs is now an invitation to you to

The Small Cruise Ship Collection

www.small-cruise-ships.com

01432 507 280 (within UK)

info@small-cruise-ships.com | small-cruise-ships.com



The Small Cruise Ship Collection

www.small-cruise-ships.com

small-cruise-ships.com

info@small-cruise-ships.com

discover the island's beauty by Zodiac. The sea whispers tales of sunken ships and adventurers. Sandy white beaches glisten in the sun. A kaleidoscope of corals and fish unfolds in the water. Places that are only accessible to a few.

In the remote archipelago of the Montebello Islands, your small expedition ship perfectly demonstrates its manoeuvrability. Over thousands of years, more than 170 uninhabited limestone islands have formed from coral reefs. Today, the rugged coastline with its bays, reefs and mangroves fascinates visitors and provides a refuge for sea turtles, dugongs and seabirds such as the osprey. After another adventurous ride in the Zodiacs, tranquillity awaits you on the idyllic Vodka Beach. Relaxing on white sand or in crystal-clear water - an Australian dream.

Day 11 Relaxation at sea

Days 12 - 15 Kimberley/Australia (Lacepede Islands, Careening Bay, King George River, Jar Island)

The Lacepede Islands off the coast of Western Australia were named after the French naturalist Lapepe. In the 19th century, they were used for guano extraction, which led to international tensions when American ships attempted to claim the islands for themselves. Today, they are a protected nature reserve with huge breeding colonies of brown boobies and seabirds, and green sea turtles use them as a breeding ground. Lined with pristine sandy beaches, rocky coastlines and turquoise waters, the island chain is a birdwatching paradise, which you can see for yourself on an exciting Zodiac tour with your experts.

Careening Bay is a symbol of early European exploration of the remote Kimberley coast. In 1820, HMS Mermaid, captained by Phillip Parker King, landed here for the cleaning and repairing of its hull. He is said to have used the careening method, in which the ship is laid on its side - as evidenced by the name of the bay. Today, the imposing Mermaid Tree also serves as a reminder of this: The sailors carved the ship's name into the huge baobab tree. The bay itself is enchanting with its rocky coastline, sparkling waters and unspoilt wilderness.

The highest twin waterfall in Western Australia lies deep in the outback - approximately 100 m (328 ft) high, King George Falls can only be admired by boat or from the air. The journey along King George River is an experience in itself: the Zodiac will take you into a gorge with bright-red sandstone walls that are around 1.6 billion years old, rising impressively before you. At the end of the rock basis, the two mighty cascades thunder into the pool. When the Zodiac approaches, you can feel the refreshing spray on your skin. Or how about a refreshing natural shower in one of Australia's most spectacular settings? The power of nature could not be more present and beautiful.

In the Kimberley region, ancient Gwion Gwion rock paintings can be found in an area covering around 50,000 km² (19,300 mi.²). Exceptional in number, variety and age, some of them are said to be approximately 50,000 years old. Delicate and detailed, they depict people in motion, animals, hunting scenes and rituals. Jar Island, near Vansittart Bay, is home to many of these fascinating works of art - an absolute must-see for insights into prehistoric history, expertly commented on by your guides. You can reach this hard-to-access island by Zodiac,

The Small Cruise Ship Collection

www.small-cruise-ships.com

01432 507 280 (within UK)

info@small-cruise-ships.com | small-cruise-ships.com



The Small Cruise Ship Collection

www.small-cruise-ships.com

small-cruise-ships.com

info@small-cruise-ships.com

which will take you to an unspoilt natural area with rock formations, tropical vegetation and rich wildlife.

[Day 16 Kupang/West Timor/Indonesia](#)

Legendary seafaring history is in the air when you reach Timor: Captain William Bligh found refuge on the island after the famous mutiny on the *Bounty* in 1789, having navigated thousands of kilometres across the Pacific in a small boat. Today, the lively city of Kupang in south-western Timor welcomes you with colonial charm, colourful markets and exotic spices. Beaches, coral reefs and tropical landscapes line the coast and offer insights into the diverse culture and nature of eastern Indonesia. Traditional music, local textiles and the history of the former Dutch trading post will turn your shore visit into a journey back in time.

[Day 17 Relaxation at sea](#)

[Day 18 Darwin/Australia, arrival 13.00 hrs Overnight stay on board](#)

In the capital of the Northern Territory on the Timor Sea, the Darwin waterfront invites you to stroll around and enjoy its many cafes and restaurants. The George Brown Botanic Gardens unfolds like an oasis in the city: small ponds, exotic plants and colourful blooming flowers invite you to relax and explore. The Museum and Art Gallery of the Northern Territory allows you to immerse yourself in the culture of the region. The fascinating art of the Aborigines - including sculptures, paintings, hunting equipment and musical instruments - comes to life here. When

the sun sinks into the sea, an iconic Darwin experience comes to life: the Mindil Beach Sunset Market. Surrounded by artists and live music, the many stalls invite you to sample local and international cuisine or marvel at the craftsmanship on display. Enjoy Darwin until late in the evening, because your ship will stay overnight here.

[Day 19 Darwin/Australia](#)

Please Note:

Itineraries are subject to change.



The Small Cruise Ship Collection

www.small-cruise-ships.com

small-cruise-ships.com

info@small-cruise-ships.com

YOUR SHIP: HANSEATIC INSPIRATION

YOUR SHIP: Hanseatic Inspiration

VESSEL TYPE:

LENGTH:

PASSENGER CAPACITY:

BUILT/REFURBISHED:

The HANSEATIC inspiration, a small, state-of-the-art expedition ship with a maximum of 230 guests, offers a perfect blend of adventure and comfort for explorers seeking to uncover the world's wonders. As an international vessel conducting cruises in both English and German, it brings over 30 years of expertise from a market leader in German-speaking countries to every journey. Each expedition is a masterpiece, passionately crafted to reveal far-flung worlds--be it icy realms, tropical paradises, wildlife havens, or cultural gems--making every voyage a unique discovery aboard this exceptional ship. Features of all cabins and suites An ocean view with even more: exclusively outside cabins and suites, almost all with balconies or French balconies Spaciously designed - enjoy a relaxing stay in rooms from 21 m²/226 ft² up to 71 m²/764 ft² in size Exceptionally equipped - for example, with binoculars, Nordic Walking poles, air conditioning, coffee machine and mini bar (free of charge) and 24-hour cabin service Separable beds Rain shower and heated wall in bathroom (e.g. for towels and wet parkas) Extensive infotainment with live broadcast and recordings of expert presentations, forwardview camera, navigation chart, films and much more Restaurants Aboard the HANSEATIC inspiration, a

new kind of freedom blends adventure and pleasure with a culinary journey across three exceptional restaurants. The spacious HANSEATIC Restaurant offers flexible mealtimes and a free choice of seating, serving a daily-changing menu of global flavors inspired by local specialties, paired with fine wines and supported by attentive 24-hour cabin service. At the Lido Restaurant, guests can savor breakfast under the open sky or enjoy a perfectly grilled steak from the outdoor barbecue, complete with panoramic views and an open show kitchen. The specialty restaurant Nikkei fuses fine Japanese creations with modern Peruvian cuisine, delivering a unique dining experience that elevates exploration to new heights--all while bars in the Observation Lounge and HanseAtrium offer favorite drinks against stunning backdrops, from Nordic fjords to icy Antarctic vistas. Fitness and Wellness On the HANSEATIC inspiration, an extraordinary time out awaits after thrilling Zodiac rides, challenging hikes, or Arctic adventures. Unwind in the Ocean Spa, where a Finnish sauna with stunning ocean views, a gentle steam sauna, an ice fountain, and a relaxation room rejuvenate your senses, complemented by professional massages, cosmetic treatments, and eco-friendly products made from natural, vegan ingredients. Stay active in the 100 m² fitness room or separate course room--both with ocean vistas--guided by a fitness coach offering personalized advice and a variety of courses, either indoors or on deck. The pool area, with its flexible canopy, invites relaxation year-round, featuring water loungers, a whirlpool, and a bar, ensuring a perfect blend of indulgence and revitalization against the backdrop of the open sea. Knowledge Shore excursions and Zodiac rides come alive

The Small Cruise Ship Collection

www.small-cruise-ships.com

01432 507 280 (within UK)

info@small-cruise-ships.com | small-cruise-ships.com



The Small Cruise Ship Collection

www.small-cruise-ships.com

small-cruise-ships.com

info@small-cruise-ships.com

with deeper context through fascinating presentations in the HanseAtrium, a high-tech lounge where experts share daily precasts and recaps, doubling as an atmospheric evening bar for films and discussions. The Ocean Academy enhances the journey with a Study Wall and interactive poster of scientific insights, microscopes for exploring hidden wonders alongside experts, and Study Seats--with swivel touchscreens--for personal dives into science. Supported by travel diaries and destination videos, this immersive experience broadens horizons with cutting-edge tools and



expertise.

The Small Cruise Ship Collection

www.small-cruise-ships.com

01432 507 280 (within UK)

info@small-cruise-ships.com | small-cruise-ships.com



The Small Cruise
Ship Collection

www.small-cruise-ships.com

small-cruise-ships.com

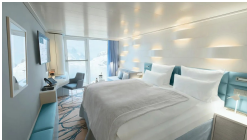
info@small-cruise-ships.com

INSIDE YOUR SHIP

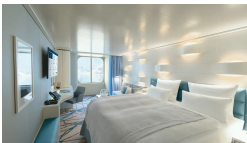
Balcony Cabin. From



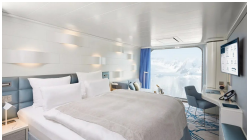
French Balcony Cabin. From



Outside Cabin. From



Panoramic Cabin. From



The Small Cruise
Ship Collection

www.small-cruise-ships.com

01432 507 280 (within UK)

info@small-cruise-ships.com | small-cruise-ships.com



The Small Cruise Ship Collection

www.small-cruise-ships.com

small-cruise-ships.com

info@small-cruise-ships.com

PRICING

04-May-2028 to 22-May-2028

Outside Cabin. From	£11519 GBP pp
Panoramic Cabin. From	£12175 GBP pp
French Balcony Cabin. From	£13479 GBP pp
Balcony Cabin. From	£14609 GBP pp