



The Small Cruise
Ship Collection

www.small-cruise-ships.com



small-cruise-ships.com

info@small-cruise-ships.com

EXPEDITION INDIAN SUMMER IN LAPLAND

Marvel at the colours of Scandinavia's Indian summer in the forests of Lapland, a region that's seldom visited in autumn. A breathtaking display of the colours of nature in the northern extension of the Baltic Sea - combined with typically Nordic cosiness.



ITINERARY

Day 1 Hamburg

Individual travel arrangements to Hamburg, departure 18.00 hrs
Evening cruise on the Elbe

Day 2 Daytime passage through the Kiel Canal

Look forward to an impressive daytime passage through the Kiel Canal, which leads you for just under 100 km (62 miles) through the typical scenery of Schleswig-Holstein: marshland and geest, Eider-Treene Depression and hilly countryside. Experience the picturesque passage intensively from the deck of your little ship - sit back and enjoy. Particular highlights are the passages through the locks and the views of the Rendsburg High Bridge, an impressive steel construction and one of the most important monuments to engineering in Germany.



The Small Cruise
Ship Collection

www.small-cruise-ships.com

01432 507 280 (within UK)

info@small-cruise-ships.com | small-cruise-ships.com



The Small Cruise Ship Collection

www.small-cruise-ships.com



small-cruise-ships.com

info@small-cruise-ships.com

Day 3 Relaxation at sea

Day 4 Stockholm/Sweden

Cruising through the Stockholm Archipelago

Stockholm/Sweden, 11.00 - 19.00 hrs

A natural open-air museum awaits as you cruise through the Stockholm Archipelago. The archipelago of around 24,000 islands is magical in the low sun. The many open deck areas offer perfect 360-degree views and your experts will provide a knowledgeable commentary. Small and manoeuvrable, your ship will take you on a flexible voyage of discovery past little islands, smoothly polished granite rocks and red wooden houses.

Lagom is the Swedish equivalent of the Danish hygge and it's all about finding the right balance in life. There are plenty of opportunities to find it in Stockholm. A true pearl of the Baltic Sea, built on 14 islands, which are connected to each other by more than 50 bridges. The city is as old and distinguished as it is youthful and modern. As you explore, which is also easily done on your own, this "Venice of the North" will show you the best sides of a history going back almost 700 years - with a rich variety of architecture you won't find anywhere else. In contrast to the historic Gamla Stan with its Gothic churches and Royal Palace, the Moderna Museet houses some important art works of the 20th and 21st centuries. The old town - a maze of narrow alleys with little cafes and boutiques - comes to life with a special kind of magic. Make sure you try the Lussekatter saffron buns or make yourself comfortable with a drink.

Day 5 Gulf of Bothnia

Gulf of Bothnia (Bothnian Sea and Bothnian Bay):

expedition day in the High Coast

Harnosand, arrival 22.00 hrs

The spirit of adventure will hang in the clear air as you press on into the northern extension of the Baltic Sea. Experiences that are only possible with a small expedition ship like Hapag-Lloyd Cruises ships await you on the flexible expedition day in the Bothnian Sea and Bothnian Bay. The deck tour at the bow, the glass balconies and the many open deck areas will become your front-row seats. Nature will provide you with constantly changing views. Your sightings will be enhanced by the interesting information provided by your experts on board.

Set a course for Sweden's special magic on an expedition day in the High Coast. The High Coast is a UNESCO World Heritage Site with diverse scenery, which you can enjoy from the many open deck areas on board. A harmonious watercolour of dramatic coastlines, dense forests and unique rock formations. This area has had the highest land uplift in the world since the end of the Ice Age. When cruising and with the Zodiacs, you will be able to discover this geologically interesting region in a flexible way, while your experts tell you some interesting facts about how it was formed and how it has changed over time. A perfect destination for nature lovers and inquisitive minds.

Day 6 Harnosand

Harnosand, departure 18.00 hrs

Around 440 years old and still full of life: the charming coastal town is not only the gateway to the High Coast, it also reveals the charm of northern Sweden. Surrounded by water and



The Small Cruise Ship Collection

www.small-cruise-ships.com

01432 507 280 (within UK)

info@small-cruise-ships.com | small-cruise-ships.com



The Small Cruise Ship Collection

www.small-cruise-ships.com

small-cruise-ships.com

info@small-cruise-ships.com

blessed with creativity, it is one of the most popular Swedish towns in summer. The experts by your side will tell you about the delightful architecture on a walk around Harnosand - mainly built in the neoclassical style. Examples include the county governor's residence on the main square, Stora Torget, and the cathedral with its 17 m (56 ft) long "rainbow rug". The town hall designed by the architect Olof Tempelman is one of the most beautiful in Sweden. Discover the history of the area in the provincial museum or visit the car museum, the largest collection of its kind in Sweden with around 200 cars. There is even a museum dedicated to the Swedish love of summer boat trips, exhibiting many different leisure and recreational craft.

Day 7 Expedition day in the Kvarken Archipelago

On an expedition day in the Kvarken Archipelago, you will cruise through a paradise of more than 5,000 islands - the Zodiacs might also be used, depending on the local conditions. Here you can enjoy a unique view of the exceptional land uplift from the ship: during the Ice Age, the area was pushed down about 1 km (0.6 miles) by the weight of a massive sheet of ice and it now rises by about 9 mm (0.3 inches) every year. Since the lagoons are not very deep, this noticeably changes the landscape and boat houses that were once on the water are now on dry land. This phenomenon takes place in both Sweden and Finland, which own the archipelago. A fascinating, constantly changing region - and a UNESCO World Heritage Site.

Day 8 Lulea

Lulea, arrival 08.00 hrs

Lulea, a charming city in the north of Sweden, has a fairy-tale atmosphere. Ideal for expedition lovers looking for adventure and unspoilt nature off the beaten track. On your own

explorations or on excursions* with your experts, you will have the opportunity to get to know more about the culture and traditions of the Sami. A definite highlight is Gammelstad Church town, a UNESCO World Heritage Site. The picturesque settlement of over 400 historic wooden houses provides a picture of traditional Swedish rural life. Would you like even more Nordic highlights? If so, experience nature on a number of outdoor activities.

Day 9 Lulea

Lulea, departure 06.00 hrs

Expedition day in the northern Bothnian Bay

On the following expedition day in the northern Bothnian Bay, the spirit of adventure will hang in the air as your small ship cruises through the clear waters. Let yourself be surprised at which island the Zodiacs will be lowered into the water so you can set off ashore.

Day 10 Kemi/Finland

Kemi/Finland, 07.00 - 22.00 hrs

Colourful trees, quiet lakes and rushing rivers - Kemi in Finnish Lapland is your starting point for activities* in an autumnal landscape. The only potential rival for the treasures of nature here is the largest gemstone collection in Europe: the King of Finland's crown, Marie-Antoinette's necklace and many other treasures can be seen here. At the museum of regional history, immerse yourself in the local culture of the people, whose daily lives you can witness on a relaxed walk along the coast. In Kemi, you will also feel close to the Arctic, since the town is not far from the Arctic Circle.



The Small Cruise Ship Collection

www.small-cruise-ships.com



small-cruise-ships.com

info@small-cruise-ships.com

Day 11 Oulu

Oulu 07.00 - 14.00 hrs

The Finnish city of Oulu is the largest urban centre in the north. Named 2026 European Capital of Culture, you can expect a colourful city life with plenty of museums, many of which are open air, and buildings such as the cathedral and the city hall in the neo-Renaissance style. The natural scenery around Oulu is like something out of a Nordic fairy tale: "the best of Finnish nature" as the town likes to describe itself. Outdoor enthusiasts will be in their element in the autumn scenery here.

Day 12 Vaasa

Vaasa, 08.00 - 14.00 hrs

Where sea and land merge into one, Vaasa is one of the most beautiful cities on the coast of Finland. Here you will find a combination of historical depth and Nordic charm. The city, whose roots go back to the 14th century, radiates a special kind of charm and invites culture lovers on a journey through time: The ruins of Old Vaasa in the Rauniopuisto Park tell of life in the Middle Ages and are a picturesque place for a walk. The nearby Korsholm Church, dating from 1786, adds a majestic touch to the surroundings, while the town centre enchants with its cobbled market square and Gothic market hall, where local products have been sold for over a century. Vaasa brings together history, architecture and culinary delights to delivery a unique cultural experience.

Day 13 Expedition day in the Åland Islands

A group of around 6,500 widely scattered islands - and you on a flexible course in the midst of them on an expedition day in the Åland Islands. Your small, manoeuvrable ship will really be

in its element here. An autonomous archipelago between Sweden and Finland with unspoilt nature, a rich history and maritime culture. With its archipelago landscapes, the region offers quiet coves and picturesque fishing villages with red wooden houses nestled on the shores. A truly picture-perfect spot in Scandinavia! Lean back and enjoy on board the ship. Only 60 of these islands are inhabited, and the only town is Mariehamn. The "city of 1,000 lime trees" is an attractive place with its charming architecture and the maritime museum. When island hopping around the different islands, depending on the conditions, you will have opportunities to go hiking or explore the archipelago by Zodiac.

Day 14 Relaxation at sea

Day 15 Cruising off the chalk cliffs of Mon

Cruising off the chalk cliffs of Mon

Evening passage through the Kiel Canal

An image that would have inspired even Caspar David Friedrich presents itself to you when cruising off the chalk cliffs of the island of Mon. In good weather, the famous cliffs glow majestically in the sunshine, in dramatic contrast to the turquoise sea. The chalk layer of the Mons Klint cliff is like an illustration of evolution: it was created millions of years ago from the shells of microscopic creations - just like a large part of Denmark. As you stand on deck, the clean Baltic Sea air will refresh your senses, and your experts will be happy to provide scientific knowledge to hone your view of the geological aspects of this coastal beauty.

Day 16 Hamburg



The Small Cruise Ship Collection

www.small-cruise-ships.com

01432 507 280 (within UK)

info@small-cruise-ships.com | small-cruise-ships.com



The Small Cruise Ship Collection

www.small-cruise-ships.com



small-cruise-ships.com

info@small-cruise-ships.com

Hamburg, arrival 08.00 hrs

Individual travel arrangements from cruise arrival point

Please note:

Itineraries are subject to change.



The Small Cruise
Ship Collection

www.small-cruise-ships.com

01432 507 280 (within UK)

info@small-cruise-ships.com | small-cruise-ships.com

The Small Cruise Ship Collection

www.small-cruise-ships.com



small-cruise-ships.com

info@small-cruise-ships.com

YOUR SHIP: HANSEATIC INSPIRATION

YOUR SHIP: Hanseatic Inspiration

VESSEL TYPE:

LENGTH:

PASSENGER CAPACITY:

BUILT/REFURBISHED:

The HANSEATIC inspiration, a small, state-of-the-art expedition ship with a maximum of 230 guests, offers a perfect blend of adventure and comfort for explorers seeking to uncover the world's wonders. As an international vessel conducting cruises in both English and German, it brings over 30 years of expertise from a market leader in German-speaking countries to every journey. Each expedition is a masterpiece, passionately crafted to reveal far-flung worlds--be it icy realms, tropical paradises, wildlife havens, or cultural gems--making every voyage a unique discovery aboard this exceptional ship. Features of all cabins and suites An ocean view with even more: exclusively outside cabins and suites, almost all with balconies or French balconies Spaciously designed - enjoy a relaxing stay in rooms from 21 m²/226 ft² up to 71 m²/764 ft² in size Exceptionally equipped - for example, with binoculars, Nordic Walking poles, air conditioning, coffee machine and mini bar (free of charge) and 24-hour cabin service Separable beds Rain shower and heated wall in bathroom (e.g. for towels and wet parkas) Extensive infotainment with live broadcast and recordings of expert presentations, forwardview camera, navigation chart, films and much more Restaurants Aboard the HANSEATIC inspiration, a

new kind of freedom blends adventure and pleasure with a culinary journey across three exceptional restaurants. The spacious HANSEATIC Restaurant offers flexible mealtimes and a free choice of seating, serving a daily-changing menu of global flavors inspired by local specialties, paired with fine wines and supported by attentive 24-hour cabin service. At the Lido Restaurant, guests can savor breakfast under the open sky or enjoy a perfectly grilled steak from the outdoor barbecue, complete with panoramic views and an open show kitchen. The specialty restaurant Nikkei fuses fine Japanese creations with modern Peruvian cuisine, delivering a unique dining experience that elevates exploration to new heights--all while bars in the Observation Lounge and HanseAtrium offer favorite drinks against stunning backdrops, from Nordic fjords to icy Antarctic vistas. Fitness and Wellness On the HANSEATIC inspiration, an extraordinary time out awaits after thrilling Zodiac rides, challenging hikes, or Arctic adventures. Unwind in the Ocean Spa, where a Finnish sauna with stunning ocean views, a gentle steam sauna, an ice fountain, and a relaxation room rejuvenate your senses, complemented by professional massages, cosmetic treatments, and eco-friendly products made from natural, vegan ingredients. Stay active in the 100 m² fitness room or separate course room--both with ocean vistas--guided by a fitness coach offering personalized advice and a variety of courses, either indoors or on deck. The pool area, with its flexible canopy, invites relaxation year-round, featuring water loungers, a whirlpool, and a bar, ensuring a perfect blend of indulgence and revitalization against the backdrop of the open sea. Knowledge Shore excursions and Zodiac rides come alive



The Small Cruise Ship Collection

www.small-cruise-ships.com



small-cruise-ships.com

info@small-cruise-ships.com

with deeper context through fascinating presentations in the HanseAtrium, a high-tech lounge where experts share daily precaps and recaps, doubling as an atmospheric evening bar for films and discussions. The Ocean Academy enhances the journey with a Study Wall and interactive poster of scientific insights, microscopes for exploring hidden wonders alongside experts, and Study Seats--with swivel touchscreens--for personal dives into science. Supported by travel diaries and destination videos, this immersive experience broadens horizons with cutting-edge tools and



expertise.



The Small Cruise Ship Collection

www.small-cruise-ships.com

01432 507 280 (within UK)

info@small-cruise-ships.com | small-cruise-ships.com



The Small Cruise Ship Collection

www.small-cruise-ships.com

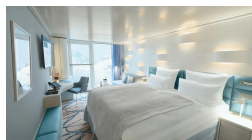
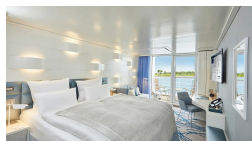


small-cruise-ships.com

info@small-cruise-ships.com

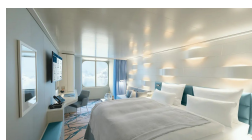
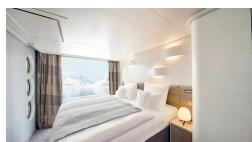
INSIDE YOUR SHIP

Balcony Cabin. From



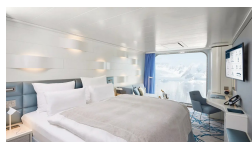
French Balcony Cabin. From

Junior Suite. From



Outside Cabin. From

Panoramic Cabin. From



The Small Cruise Ship Collection

www.small-cruise-ships.com

01432 507 280 (within UK)

info@small-cruise-ships.com | small-cruise-ships.com



The Small Cruise Ship Collection

www.small-cruise-ships.com



small-cruise-ships.com

info@small-cruise-ships.com

PRICING

17-Sep-2026 to 02-Oct-2026

Outside Cabin. From	£7299 GBP pp
Panoramic Cabin. From	£7299 GBP pp
French Balcony Cabin. From	£9396 GBP pp
Balcony Cabin. From	£10118 GBP pp

17-Sep-2027 to 02-Oct-2027

Panoramic Cabin. From	£7734 GBP pp
Outside Cabin. From	£7734 GBP pp
French Balcony Cabin. From	£9718 GBP pp
Balcony Cabin. From	£10544 GBP pp
Junior Suite. From	£14651 GBP pp



The Small Cruise Ship Collection

www.small-cruise-ships.com

01432 507 280 (within UK)

info@small-cruise-ships.com | small-cruise-ships.com