



The Small Cruise  
Ship Collection

www.small-cruise-ships.com

small-cruise-ships.com

info@small-cruise-ships.com

## EXPEDITION EASTER ISLAND AND AUSTRAL ISLANDS - LIFE BETWEEN MOTUS AND MOAI

This cruise immerses you in a tapestry of mysticism, rites, and legends across secluded atolls and rainforest islands, spotlighting the enigma of Easter Island's moai statues and the ancient Polynesian rituals of remote outposts. Highlights include tracing the original haunts of Robinson Crusoe on his namesake island and the Bounty's legacy at Pitcairn, with Zodiac landings in pristine, untouched locales. From Chile's Puerto Montt, the journey weaves through the Pacific, unveiling the cultural and natural wonders of Easter Island, the Gambier and Austral Islands, and culminating in the paradisiacal shores of Moorea and Tahiti—a voyage steeped in history and untouched beauty.



### ITINERARY

Fri, 20.02.2026 Puerto Montt/Chile

Departure 23.00 hrs

Sat, 21.02.2026 - Sun, 22.02.2026 Relaxation at sea

Mon, 23.02.2026 Robinson Crusoe Island

The Robinson Crusoe Island, part of the Juan Fernandez Archipelago, is located far out in the Pacific Ocean, off the coast of Chile. This wild and remote island served as inspiration for Daniel Defoe's famous novel "Robinson Crusoe". Today, you can explore the unique flora and fauna of the island, much of which is endemic, and follow in the footsteps of the historical castaway Alexander Selkirk, whose lonely years on the island



# The Small Cruise Ship Collection

[www.small-cruise-ships.com](http://www.small-cruise-ships.com)

[small-cruise-ships.com](http://small-cruise-ships.com)

[info@small-cruise-ships.com](mailto:info@small-cruise-ships.com)

served as the basis for Defoe's work. From its lush hills to its crystal-clear waters, Robinson Crusoe Island is a true paradise for adventurers and nature lovers.

Tue, 24.02.2026 - Fri, 27.02.2026 Relaxation at sea

Sat, 28.02.2026 Hanga Roa/Easter Island

Arrival 14.00 hrs

Hanga Roa is the pulsating heart of the mysterious Easter Island, also known as Rapa Nui, and serves as a central point of reference for visitors who want to explore the island and its legendary Moai statues. As the island's only settlement, Hanga Roa offers a mix of cultural influences, local Rapa Nui traditions, and modern amenities. Excursions to famous archaeological sites like Ahu Tongariki and the volcano Rano Raraku start from here. Hanga Roa combines the spirit of a closely-knit community with the incomparable beauty of one of the most remote places in the world.

Sun, 01.03.2026 Hanga Roa

Departure 19.00 hrs

Hanga Roa is the pulsating heart of the mysterious Easter Island, also known as Rapa Nui, and serves as a central point of reference for visitors who want to explore the island and its legendary Moai statues. As the island's only settlement, Hanga Roa offers a mix of cultural influences, local Rapa Nui traditions, and modern amenities. Excursions to famous archaeological

sites like Ahu Tongariki and the volcano Rano Raraku start from here. Hanga Roa combines the spirit of a closely-knit community with the incomparable beauty of one of the most remote places in the world.

Mon, 02.03.2026 - Tue, 03.03.2026 Relaxation at sea

Wed, 04.03.2026 - Thu, 05.03.2026 Pitcairn Islands

(cruising off Ducie Atoll, Pitcairn)

The Pitcairn Islands, known as the refuge of the mutineers of the Bounty, offer an impressive landscape and an exciting history. While sailing in front of the Ducie Atoll, a protected underwater ecosystem, the untouched diversity of the sea in the endless blue ocean is revealed. Experience a rare encounter with one of the most isolated communities in the world on the main island of Pitcairn, explore the culture of the islanders and their legendary past, which is still alive today in the stories and simple lifestyle of their descendants.

Fri, 06.03.2026 Relaxation at sea

Sat, 07.03.2026 Mangareva/Gambier Islands/French Polynesia

Mangareva is the largest island in the Gambier Islands of French Polynesia, a hidden gem surrounded by turquoise lagoons and rich coral reefs. This remote island group is known for its serene beauty, historical pearl farms, and impressive relics of ancient churches and royal palaces that testify to its missionary and colonial past. Visitors to Mangareva can immerse themselves in



The Small Cruise Ship Collection

[www.small-cruise-ships.com](http://www.small-cruise-ships.com)

**01432 507 280** (within UK)

[info@small-cruise-ships.com](mailto:info@small-cruise-ships.com) | [small-cruise-ships.com](http://small-cruise-ships.com)





## The Small Cruise Ship Collection

[www.small-cruise-ships.com](http://www.small-cruise-ships.com)

[small-cruise-ships.com](http://small-cruise-ships.com)

[info@small-cruise-ships.com](mailto:info@small-cruise-ships.com)

a world where the pace is slower and nature still appears untouched, perfect for diving, hiking, and discovering Polynesian culture in its purest form.

Sun, 08.03.2026 - Mon, 09.03.2026 Relaxation at sea

Tue, 10.03.2026 - Fri, 13.03.2026 Austral Islands

(Raivavae, Tubuai, Rimatara, Rurutu)

The Austral Islands, a less-traveled group of islands in French Polynesia, offer unique insights into Polynesian culture and an impressive range of natural beauties. Raivavae entices with its resemblance to Bora Bora, but boasts a largely pristine idyll. Tubuai, known for its rich history and battlefields from the times of the Mutiny on the Bounty, is surrounded by a magnificent coral reef. Rimatara, the smallest inhabited island in the archipelago, dazzles with its rich birdlife, while Rurutu invites hiking and is famous for its spectacular caves and seasonal whale watching. Together, these islands form a peaceful retreat with authentic island charm.

Sat, 14.03.2026 Moorea Papeete/Tahiti/French Polynesia

Arrival 20.00 hrs

Overnight stay on board

Moorea, the neighbouring island of Tahiti in French Polynesia, is a true paradise on Earth. With its emerald green mountains, lush tropical forests, and picturesque beaches, Moorea captivates visitors from around the world. What sets Moorea apart is its

untouched nature, which allows for a variety of outdoor activities. From hikes to the mountain peaks to boat tours through the crystal clear lagoons, the island offers numerous opportunities to explore the beauty of the surroundings. Additionally, Moorea is known for its rich marine life, perfect for snorkelling and diving. The friendly locals and their traditional culture also add to the charm of Moorea. Whether you're looking to spend relaxing days on the beach or seek adventure in nature, Moorea will enchant you with its unmatched charm and natural beauty.

Sun, 15.03.2026 Papeete/Tahiti/French Polynesia

Please Note:

Itineraries are subject to change.

The Small Cruise  
Ship Collection

[www.small-cruise-ships.com](http://www.small-cruise-ships.com)

01432 507 280 (within UK)

[info@small-cruise-ships.com](mailto:info@small-cruise-ships.com) | [small-cruise-ships.com](http://small-cruise-ships.com)



## The Small Cruise Ship Collection

[www.small-cruise-ships.com](http://www.small-cruise-ships.com)

[small-cruise-ships.com](http://small-cruise-ships.com)

[info@small-cruise-ships.com](mailto:info@small-cruise-ships.com)

## YOUR SHIP: HANSEATIC INSPIRATION

**YOUR SHIP:** Hanseatic Inspiration

**VESSEL TYPE:**

**LENGTH:**

**PASSENGER CAPACITY:**

**BUILT/REFURBISHED:**

The HANSEATIC inspiration, a small, state-of-the-art expedition ship with a maximum of 230 guests, offers a perfect blend of adventure and comfort for explorers seeking to uncover the world's wonders. As an international vessel conducting cruises in both English and German, it brings over 30 years of expertise from a market leader in German-speaking countries to every journey. Each expedition is a masterpiece, passionately crafted to reveal far-flung worlds--be it icy realms, tropical paradises, wildlife havens, or cultural gems--making every voyage a unique discovery aboard this exceptional ship. Features of all cabins and suites An ocean view with even more: exclusively outside cabins and suites, almost all with balconies or French balconies Spaciously designed - enjoy a relaxing stay in rooms from 21 m<sup>2</sup>/226 ft<sup>2</sup> up to 71 m<sup>2</sup>/764 ft<sup>2</sup> in size Exceptionally equipped - for example, with binoculars, Nordic Walking poles, air conditioning, coffee machine and mini bar (free of charge) and 24-hour cabin service Separable beds Rain shower and heated wall in bathroom (e.g. for towels and wet parkas) Extensive infotainment with live broadcast and recordings of expert presentations, forwardview camera, navigation chart, films and much more Restaurants Aboard the HANSEATIC inspiration, a

new kind of freedom blends adventure and pleasure with a culinary journey across three exceptional restaurants. The spacious HANSEATIC Restaurant offers flexible mealtimes and a free choice of seating, serving a daily-changing menu of global flavors inspired by local specialties, paired with fine wines and supported by attentive 24-hour cabin service. At the Lido Restaurant, guests can savor breakfast under the open sky or enjoy a perfectly grilled steak from the outdoor barbecue, complete with panoramic views and an open show kitchen. The specialty restaurant Nikkei fuses fine Japanese creations with modern Peruvian cuisine, delivering a unique dining experience that elevates exploration to new heights--all while bars in the Observation Lounge and HanseAtrium offer favorite drinks against stunning backdrops, from Nordic fjords to icy Antarctic vistas. Fitness and Wellness On the HANSEATIC inspiration, an extraordinary time out awaits after thrilling Zodiac rides, challenging hikes, or Arctic adventures. Unwind in the Ocean Spa, where a Finnish sauna with stunning ocean views, a gentle steam sauna, an ice fountain, and a relaxation room rejuvenate your senses, complemented by professional massages, cosmetic treatments, and eco-friendly products made from natural, vegan ingredients. Stay active in the 100 m<sup>2</sup> fitness room or separate course room--both with ocean vistas--guided by a fitness coach offering personalized advice and a variety of courses, either indoors or on deck. The pool area, with its flexible canopy, invites relaxation year-round, featuring water loungers, a whirlpool, and a bar, ensuring a perfect blend of indulgence and revitalization against the backdrop of the open sea. Knowledge Shore excursions and Zodiac rides come alive

The Small Cruise Ship Collection  
[www.small-cruise-ships.com](http://www.small-cruise-ships.com)

**01432 507 280** (within UK)

[info@small-cruise-ships.com](mailto:info@small-cruise-ships.com) | [small-cruise-ships.com](http://small-cruise-ships.com)







# The Small Cruise Ship Collection

[www.small-cruise-ships.com](http://www.small-cruise-ships.com)

[small-cruise-ships.com](http://small-cruise-ships.com)[info@small-cruise-ships.com](mailto:info@small-cruise-ships.com)

with deeper context through fascinating presentations in the HanseAtrium, a high-tech lounge where experts share daily precaps and recaps, doubling as an atmospheric evening bar for films and discussions. The Ocean Academy enhances the journey with a Study Wall and interactive poster of scientific insights, microscopes for exploring hidden wonders alongside experts, and Study Seats--with swivel touchscreens--for personal dives into science. Supported by travel diaries and destination videos, this immersive experience broadens horizons with cutting-edge tools and



expertise.

# The Small Cruise Ship Collection

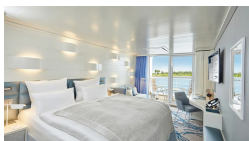
[www.small-cruise-ships.com](http://www.small-cruise-ships.com)

[small-cruise-ships.com](http://small-cruise-ships.com)

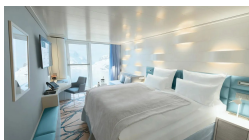
[info@small-cruise-ships.com](mailto:info@small-cruise-ships.com)

## INSIDE YOUR SHIP

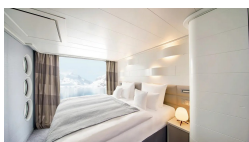
Balcony Cabin



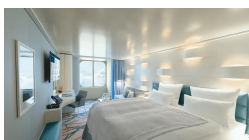
French Balcony Cabin



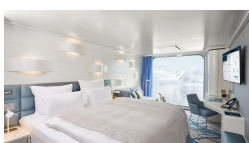
Junior Suite



Outside Cabin



Panoramic Cabin







The Small Cruise  
Ship Collection

[www.small-cruise-ships.com](http://www.small-cruise-ships.com)

[small-cruise-ships.com](http://small-cruise-ships.com)

[info@small-cruise-ships.com](mailto:info@small-cruise-ships.com)

## PRICING

20-Feb-2026 to 15-Mar-2026

|                      |               |
|----------------------|---------------|
| Panoramic Cabin      | £11042 GBP pp |
| Outside Cabin        | £11042 GBP pp |
| French Balcony Cabin | £11892 GBP pp |
| Balcony Cabin        | £12742 GBP pp |
| Junior Suite         | £21250 GBP pp |



The Small Cruise  
Ship Collection

[www.small-cruise-ships.com](http://www.small-cruise-ships.com)

01432 507 280 (within UK)

[info@small-cruise-ships.com](mailto:info@small-cruise-ships.com) | [small-cruise-ships.com](http://small-cruise-ships.com)