

The Small Cruise Ship Collection

www.small-cruise-ships.com

small-cruise-ships.com

info@small-cruise-ships.com

EXPEDITION AZORES: CHARMING AND UNSPOILT

Pioneering discoveries in the Azores for nature lovers. Experience the fascinating beauty of the archipelago on numerous outdoor activities accompanied by your experts. From a magnificent seafaring history to picturesque hiking routes.



ITINERARY

Day 1 Funchal/Madeira/Portugal
Funchal/Madeira/Portugal, departure 19.00 hrs

Day 2 Relaxation at sea

Day 3 Southern Azores
Southern Azores (Santa Maria)

Get to know the varied faces of Europe's westernmost

The Small Cruise Ship Collection

www.small-cruise-ships.com

01432 507 280 (within UK)

info@small-cruise-ships.com | small-cruise-ships.com



The Small Cruise Ship Collection

www.small-cruise-ships.com

small-cruise-ships.com

info@small-cruise-ships.com

archipelago intensively when your small expedition ship calls at eight of the nine islands. A warm welcome will be reserved for you at the idyllic island of Santa Maria, the southernmost and oldest island. With its sunny climate, golden sandy beaches and rolling hills, it stands out from the volcanic landscape of its sister islands. Here time seems to go more slowly: tranquil Vila do Porto, the oldest town in the Azores, tells the tale of seafaring legends and the discovery of the New World. You will also be enchanted by the white houses and small farming communities on the island. Santa Maria is a paradise for nature lovers and hikers, with its hidden bays, red desert landscapes and lava caves. It will both awaken your spirit of adventure and invite you to stop for a while and enjoy the peace of the Atlantic.

Days 4 - 5 Central Azores

Central Azores (Pico , Faial)

Pico, dominated by Portugal's highest mountain at more than 2,300 m (7,546 ft) - which also gives its name to the island - is home to volcanoes and whales. Discover the secrets of the crater island between bizarre, rugged rock formations and lush green vegetation. With its walls of volcanic rock and the craftsmanship of its cultivation practices, its wine region has been listed as a UNESCO World Heritage Site. Find out more when you explore Pico with your experts. The history of whaling is also present here - but all that's hunted here today are the best photos and the chances of capturing those are good. On board, your knowledge will be enriched with interesting expert presentations: Immerse yourself in the world of the giants of the seas.

The island of Faial in the Azores is known for its cosmopolitan

flair - with the famous Peter Cafe Sport in Horta's harbour, a mix of coffee house and tavern that has become a meeting point for sailors from all over the world. Listen to their tales of the high seas and try the Atlantic's best gin and tonic. With idyllic views over Pico, the marina is a great place for a stroll along the harbour walls with "artworks" painted by the sailors. It is said that those who don't leave something behind for posterity will have bad luck with the weather on their onward journeys. Learn all about volcanology when you visit the Capelinhos volcano* - around 12,000 years old, the caldera has a diameter of some 2 km (1.2 miles). Enjoy the views of the island on a circumnavigation of the volcano.

Days 6 - 7 Western Azores

Western Azores (Corvo, Flores)

Corvo, the smallest inhabited island in the Azores archipelago, is just 17 km² (6.5 square miles) and is actually the crater of a massive volcano. Seen from a distance, it looks like a green mountain that seems to float in the dark blue Atlantic. In the island's interior there is a deep caldera, with emerald green lakes and grassy hills at its bottom. Your experts will explain the origins of the UNESCO Biosphere Reserve and the history of the Mediterranean windmills. There is only one word to describe a hike* along the crater rim: spectacular. The steep cliffs and broad expanse of sea around the island are a paradise for bird watchers and adventurers. What is it like to live here? Find the answer in the island's only town, Vila do Corvo, as you wander around its narrow streets with black stone houses.

Flores, the westernmost island in Europe, is an authentic gem of the Azores for hikers, divers and those seeking peace and

The Small Cruise Ship Collection

www.small-cruise-ships.com

01432 507 280 (within UK)

info@small-cruise-ships.com | small-cruise-ships.com



The Small Cruise Ship Collection

www.small-cruise-ships.com

small-cruise-ships.com

info@small-cruise-ships.com

tranquillity. The island is a geological wonder, with thundering waterfalls on its steep slopes and rocky bays revealing the power of the ocean. Its small villages are a great place to meet the welcoming islanders. With a bit of luck, you might spot sperm whales, Risso's dolphins and large porpoises from the Zodiacs on the waters off the coast of Flores. The marvellous marine spectacles continue ashore with seas of vibrant flowers: the wild and beautiful flower island certainly lives up to its name. A nature retreat that remains unaffected by the hectic pace of the rest of the world.

[Days 8 - 9 Central Azores](#)

Central Azores (Graciosa, Sao Jorge)

A genuine insider tip among explorers and seldom visited, the appeal of Graciosa lies in its natural beauty. The pioneering spirit of past Portuguese seafarers will come to life when your expedition ship docks at the pier. Thanks to your experts on board, you will discover the special contrasts of the island. Graciosa, the "graceful" island, is simply idyllic with its little villages - and is all the more untamed around 100 m (328 ft) below ground: hot springs bubble in an impressive sulphur cave and rising steam creates a mystical atmosphere. Climb down to see this volcanic wonder up close. Typical of Graciosa are the old windmills, like silent guardians of the island. They are white underneath and have red, rotating, onion-shaped roofs.

Your route will also take you to Sao Jorge with its wide plateaus shaped by volcanic cones that look like a dragon - appropriately, Saint George the dragon slayer is the patron saint of the island. Find out more about this from your experts on board. The island is a great place for a hike* in the rich,

endemic vegetation. Particularly stunning are the many fajas, lush, green stretches of land formed by cooled lava, where tropical fruits and even coffee are cultivated. Thousands of cows graze on the evergreen pastures of the highlands. On your explorations, make sure you try the products of the dairy farmers, like the famous Sao Jorge cheese: the island is also known as the "cheese island" thanks to its high-quality, certified cheeses.

[Day 10 Ponta Delgada/Sao Miguel/Azores/Portugal](#)

Ponta Delgada/Sao Miguel/Azores/Portugal, arrival 08.00 hrs

Overnight stay on board

A hint of the colonial past can still be sensed in the Azores today. The capital of the archipelago, Ponta Delgada on Sao Miguel, symbolises the islands' vibrant history. Churches, squares and the city hall exude baroque flair that you can soak up on a stroll at your own pace. The green island also enchants visitors with fertile valleys, thermal springs and Europe's only tea plantation. The crater lakes of Sete Cidades* - which range from deep blue to turquoise depending on the light - reflect the creative power of nature. Your feelings of discovery will keep pace with the fantastic panoramas when you discover the hiker's paradise of Sao Miguel* on foot - with its river valley, waterfalls and beaches.

[Day 11 Ponta Delgada/Sao Miguel/Azores/Portugal](#)

Please note:

The itinerary depends on the weather conditions. The natural experiences and wildlife sightings described are possibilities on this expedition and are not guaranteed.

The Small Cruise Ship Collection

www.small-cruise-ships.com

01432 507 280 (within UK)

info@small-cruise-ships.com | small-cruise-ships.com



The Small Cruise Ship Collection

www.small-cruise-ships.com

small-cruise-ships.com

info@small-cruise-ships.com

YOUR SHIP: HANSEATIC INSPIRATION

YOUR SHIP: Hanseatic Inspiration

VESSEL TYPE:

LENGTH:

PASSENGER CAPACITY:

BUILT/REFURBISHED:

The HANSEATIC inspiration, a small, state-of-the-art expedition ship with a maximum of 230 guests, offers a perfect blend of adventure and comfort for explorers seeking to uncover the world's wonders. As an international vessel conducting cruises in both English and German, it brings over 30 years of expertise from a market leader in German-speaking countries to every journey. Each expedition is a masterpiece, passionately crafted to reveal far-flung worlds--be it icy realms, tropical paradises, wildlife havens, or cultural gems--making every voyage a unique discovery aboard this exceptional ship. Features of all cabins and suites An ocean view with even more: exclusively outside cabins and suites, almost all with balconies or French balconies Spaciously designed - enjoy a relaxing stay in rooms from 21 m²/226 ft² up to 71 m²/764 ft² in size Exceptionally equipped - for example, with binoculars, Nordic Walking poles, air conditioning, coffee machine and mini bar (free of charge) and 24-hour cabin service Separable beds Rain shower and heated wall in bathroom (e.g. for towels and wet parkas) Extensive infotainment with live broadcast and recordings of expert presentations, forwardview camera, navigation chart, films and much more Restaurants Aboard the HANSEATIC inspiration, a

new kind of freedom blends adventure and pleasure with a culinary journey across three exceptional restaurants. The spacious HANSEATIC Restaurant offers flexible mealtimes and a free choice of seating, serving a daily-changing menu of global flavors inspired by local specialties, paired with fine wines and supported by attentive 24-hour cabin service. At the Lido Restaurant, guests can savor breakfast under the open sky or enjoy a perfectly grilled steak from the outdoor barbecue, complete with panoramic views and an open show kitchen. The specialty restaurant Nikkei fuses fine Japanese creations with modern Peruvian cuisine, delivering a unique dining experience that elevates exploration to new heights--all while bars in the Observation Lounge and HanseAtrium offer favorite drinks against stunning backdrops, from Nordic fjords to icy Antarctic vistas. Fitness and Wellness On the HANSEATIC inspiration, an extraordinary time out awaits after thrilling Zodiac rides, challenging hikes, or Arctic adventures. Unwind in the Ocean Spa, where a Finnish sauna with stunning ocean views, a gentle steam sauna, an ice fountain, and a relaxation room rejuvenate your senses, complemented by professional massages, cosmetic treatments, and eco-friendly products made from natural, vegan ingredients. Stay active in the 100 m² fitness room or separate course room--both with ocean vistas--guided by a fitness coach offering personalized advice and a variety of courses, either indoors or on deck. The pool area, with its flexible canopy, invites relaxation year-round, featuring water loungers, a whirlpool, and a bar, ensuring a perfect blend of indulgence and revitalization against the backdrop of the open sea. Knowledge Shore excursions and Zodiac rides come alive

The Small Cruise Ship Collection

www.small-cruise-ships.com

01432 507 280 (within UK)

info@small-cruise-ships.com | small-cruise-ships.com



The Small Cruise Ship Collection

www.small-cruise-ships.com

small-cruise-ships.com

info@small-cruise-ships.com

with deeper context through fascinating presentations in the HanseAtrium, a high-tech lounge where experts share daily precasts and recaps, doubling as an atmospheric evening bar for films and discussions. The Ocean Academy enhances the journey with a Study Wall and interactive poster of scientific insights, microscopes for exploring hidden wonders alongside experts, and Study Seats--with swivel touchscreens--for personal dives into science. Supported by travel diaries and destination videos, this immersive experience broadens horizons with cutting-edge tools and



expertise.

The Small Cruise Ship Collection

www.small-cruise-ships.com

01432 507 280 (within UK)

info@small-cruise-ships.com | small-cruise-ships.com

The Small Cruise Ship Collection

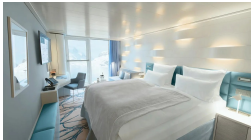
www.small-cruise-ships.com

small-cruise-ships.com

info@small-cruise-ships.com

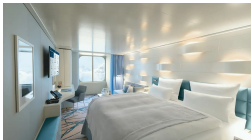
INSIDE YOUR SHIP

Balcony Cabin. From



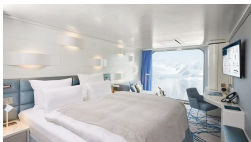
French Balcony Cabin. From

Grand Suite. From



Outside Cabin. From

Panoramic Cabin. From





The Small Cruise Ship Collection

www.small-cruise-ships.com

small-cruise-ships.com

info@small-cruise-ships.com

PRICING

03-May-2027 to 13-May-2027

Outside Cabin. From	£4385 GBP pp
Panoramic Cabin. From	£4385 GBP pp
French Balcony Cabin. From	£5690 GBP pp
Balcony Cabin. From	£6168 GBP pp
Grand Suite. From	£11736 GBP pp