

## The Small Cruise Ship Collection

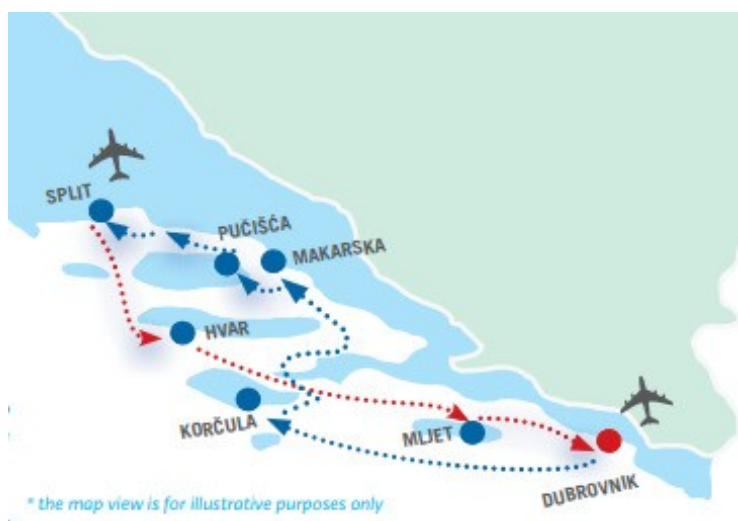
[www.small-cruise-ships.com](http://www.small-cruise-ships.com)

[small-cruise-ships.com](http://small-cruise-ships.com)

[info@small-cruise-ships.com](mailto:info@small-cruise-ships.com)

### DUBROVNIK AND THE ADRIATIC (M/S EQUATOR)

Cruise from Dubrovnik returning back to Dubrovnik via the stunning islands of Croatia's Adriatic Coast. We will visit the main sites and some of the more out of the way locations as we cruise on our small ship. You are left free to explore the restaurants of the towns we stay in each night and we provide walking tours to show you the highlights of the towns.



#### ITINERARY

Day 1 DUBROVNIK arrival on a Saturday

You will be transferred from Dubrovnik's airport or your Dubrovnik's hotel to harbour, where embarkation begins at 13:00h. Get settled in your cabin before attending a Welcome Reception followed by dinner this evening.

Day 2 DUBROVNIK - KORČULA, Sunday

Early in the morning we set sail for the island of Korčula, with swimming stop, if weather permits, in one of pristine bays, time to relax and lunch on board. Continue towards Korčula, the most preserved medieval town, thought to be the birthplace of the famous explorer Marco Polo. Take a walking tour of Korčula which takes you through its narrow, cobbled streets full of history and enjoy wine tasting in one of the local wine bars. Evening is free to explore the town on your own.

The Small Cruise Ship Collection  
[www.small-cruise-ships.com](http://www.small-cruise-ships.com)

01432 507 280 (within UK)

[info@small-cruise-ships.com](mailto:info@small-cruise-ships.com) | [small-cruise-ships.com](http://small-cruise-ships.com)



## The Small Cruise Ship Collection

[www.small-cruise-ships.com](http://www.small-cruise-ships.com)

[small-cruise-ships.com](http://small-cruise-ships.com)

[info@small-cruise-ships.com](mailto:info@small-cruise-ships.com)

### Day 3 KORCULA - MAKARSKA, Monday

In the morning we continue our adventure by sailing to town of Makarska, on the mainland, where we will spend the night. Makarska is one of the most popular tourist resort areas on Adriatic due to its long pebbly beaches and scenic mountains in the background, which creates a specific climate and picturesque views. After lunch on board, you will have free time to enjoy the therapeutic benefits of fresh sea air by walking through the green paths of St. Peter peninsula towards west and then further to the beach for a lovely 2 km long walk along the seaside promenade or to explore the streets and squares of Old Town behind the main promenade, which are abundant with galleries, souvenir shops, cafes and restaurants. Tonight enjoy Captain's dinner and overnight in port of Makarska.

### Day 4 MAKARSKA - PUCISKA - SPLIT, Tuesday

Our journey then continues towards Pušća, situated on the island of Brač, village of the stone sculpture, where you can visit amazing stonemason school (optional). After visiting Pušća we sail to Split with a stop along the way to swim and relax, if weather permits, with lunch on board. In the late afternoon we arrive at Split to spend the night. Arriving in Split, join a guided tour of the city, visit the seafront promenade and Roman Emperor Diocletian's Palace. The historical center of the city is listed as a UNESCO World Heritage site. Your evening is free in Split.

### Day 5 SPLIT - HVAR, Wednesday

Morning guided walking tour of Split shows us the historic inner city, built around the Roman Emperor Diocletian's Palace, a UNESCO World Cultural Heritage site. Set sail to Hvar, one of the most popular islands in the Adriatic. A sightseeing tour of Hvar town shows you the first public theatre in Europe and many

more historical sites. Spend evening and night in Hvar. Note: Due to the limited capacity of the Hvar harbour (during peak season in July and August) port of call can be substituted for Stari Grad/Jelsa. In that case transfer by bus will be organized to and from Hvar.

### Day 6 HVAR - MLJET, Thursday

In the morning head further south to the Island of Mljet. Join the Cruise Manager for a stroll to the famous salt lakes in the Mljet National Park and enjoy the boat ride to the St Mary Isle to visit an ancient Benedictine monastery, an old abbey and a Church dating back to the 12th Century. Alternatively, you can rent bicycles, scooters or kayaks to explore the National Park or island on your own. Overnight in port of Pomena.

### Day 7 MLJET - DUBROVNIK, Friday

In the morning sail to Dubrovnik, the "Pearl of the Adriatic", a UNESCO World Heritage site. Upon arrival in Dubrovnik, you will enjoy a guided tour of the magnificent Old Town with a panoramic bus ride above the Old Town. After the panoramic view, we will arrive at the historical centre of Dubrovnik, walk through STRADUN – both a street and a square, the most famous place inside the town walls, the famous city enlisted as UNESCO's World Heritage site, where your guide will show you the most interesting sights of Dubrovnik. After city tour, you will be left on your own to explore the city, visit City Walls, the Franciscan Monastery with Europe's second oldest pharmacy, the Rector's Palace and the Cathedral, take a boat ride to Lokrum island or take the cable car to the top of the Mount Sr. Overnight in Dubrovnik.

### Day 8 DUBROVNIK departure, Saturday

The Small Cruise Ship Collection  
[www.small-cruise-ships.com](http://www.small-cruise-ships.com)

**01432 507 280** (within UK)

[info@small-cruise-ships.com](mailto:info@small-cruise-ships.com) | [small-cruise-ships.com](http://small-cruise-ships.com)





## The Small Cruise Ship Collection

[www.small-cruise-ships.com](http://www.small-cruise-ships.com)

[small-cruise-ships.com](http://small-cruise-ships.com)

[info@small-cruise-ships.com](mailto:info@small-cruise-ships.com)

After breakfast it's time to disembark. You will be transferred to Dubrovnik airport or your Dubrovnik hotel.

Please note:

Itineraries are subject to change.

# The Small Cruise Ship Collection

[www.small-cruise-ships.com](http://www.small-cruise-ships.com)

[small-cruise-ships.com](http://small-cruise-ships.com)

[info@small-cruise-ships.com](mailto:info@small-cruise-ships.com)

## YOUR SHIP: EQUATOR

**YOUR SHIP:**

**Equator**

**VESSEL TYPE:**

**LENGTH:**

**PASSENGER CAPACITY:**

**BUILT/REFURBISHED:**

Equator was built and launched in 2017 in the Split shipyard, having been designed specifically for cruising the coast and islands of Croatia's Adriatic coastline. With its compact size (39 metres long) and good maneuvering abilities, she can access the small ports and harbours of inaccessible to even medium sized cruise vessels. She has just 18 cabins, Equator carries a maximum of just 36 passengers in comfort. Equator has 18 spacious cabins, all with private facilities and air-conditioning providing a premium cruise. Passenger cabins are situated on two decks and are all fully air conditioned, with an independent ventilation system and modern private en suite shower and toilet. All cabins are equipped with twin (200x80 cm) or double (200x160 cm) beds, Satellite LCD TV, desk and chair, mirror, night lamps, safe deposit box, radio, hair dryer, 220 V electric supply, lifejacket, wardrobe and luggage space under bed, as well as the latest safety & fire alarm and sound system for messages from the cruise manager or group leader. Standard cabins have two portholes while main deck cabins have a cabin window and porthole in bathroom.





# The Small Cruise Ship Collection

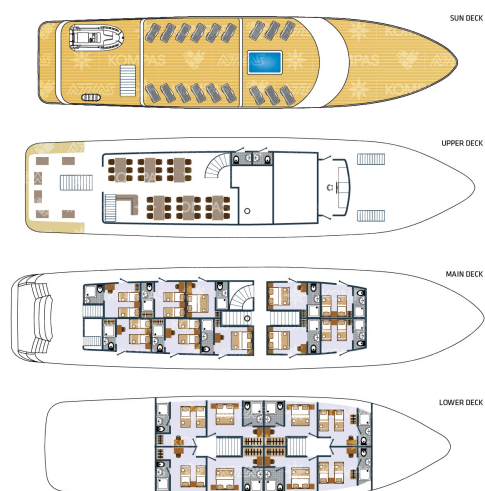
[www.small-cruise-ships.com](http://www.small-cruise-ships.com)

[small-cruise-ships.com](http://small-cruise-ships.com)

[info@small-cruise-ships.com](mailto:info@small-cruise-ships.com)

## INSIDE YOUR SHIP

### EQUATOR





The Small Cruise  
Ship Collection

[www.small-cruise-ships.com](http://www.small-cruise-ships.com)



[small-cruise-ships.com](http://small-cruise-ships.com)

[info@small-cruise-ships.com](mailto:info@small-cruise-ships.com)

## PRICING

---

### ADDITIONAL CHARGES:

Port tax and Tourist tax 35 EUR pp



The Small Cruise  
Ship Collection

[www.small-cruise-ships.com](http://www.small-cruise-ships.com)

**01432 507 280** (within UK)

[info@small-cruise-ships.com](mailto:info@small-cruise-ships.com) | [small-cruise-ships.com](http://small-cruise-ships.com)