



## DISKO BAY: MEETING THE INUIT & DISCOVERING THE UNKNOWN IN LUXURY

With the exceptional presence of a photo ambassador. Explore the wild lands of Greenland's south-west coast , where snow covers landscapes of raw and surprising beauty. Aboard \_Le Commandant Charcot\_ , a state-of-the-art cocoon designed for exploration, you will have access to lands that traditional ships cannot reach. As you sail across Baffin Bay , the ever-changing ice will reveal its secrets, creating a magical spectacle in Disko Bay, where majestic icebergs drift slowly across the dark waters. This spring , you will receive a warm welcome in the Inuit villages , where community members will spend time with you and share their traditions, imbuing your journey with wisdom and intense emotion.



### ITINERARY

Day 1 - Nuuk

When Erik Le Rouge, the exiled Norse chief, landed on the coast of Nuuk, he found a fertile and welcoming land dotted with fjords. He settled there with a group of his former countrymen, and the Norse remained the principal inhabitants until, over a period of 500 years, their population declined and gave way to the Inuit. Nuuk is situated at the mouth of one of the largest networks of fjords in the world, where the waters never freeze. The town spreads gently out towards the Davis Strait and enjoys an historic center that is particularly rich in national heritage.



The vivid reds, blues, greens and yellows of the houses are a lively contrast to the somber waters of Greenland and serve to lift the spirits of the locals during the Winter months.

#### Days 2 - 3 - Baffin Bay Exploration

In the icy waters of Baffin Bay, you will sail into the heart of the scattered sea floe. You will be captivated by icebergs in dreamlike shapes as your ship takes you into the ice of the Far North. Everything comes in shades of white here and, if you watch closely, you may get a glimpse of the lord of this kingdom, the polar bear. This fascinating animal finds its food in the heart of the ice, so this is where you have more chances of spotting it. The polar light gives a shine to the ice floe that you sail along as you explore Baffin Bay, leaving you with memories of unforgettable moments.

#### Day 4 - Disko Bay

To the east of Baffin Bay, discover Disko Bay, scattered with countless icebergs produced by the Ilulissat Icefjord, a UNESCO World Heritage Site. From your ship, admire the majestic ballet of these ice giants as they slowly drift across the dark waters. This site is a natural marvel of Greenland, and is also renowned as an observation point for the region's many humpback whales. The encounters with wild fauna and stunning landscapes in the heart of this spectacular and fragile nature will be pure moments of wonder for you.

#### Days 5 - 6 - Disko Island

Disko Island, called Qeqertarsuaq in Greenlandic, is one of the most spectacular jewels of the west coast of Greenland. It is crossed by an ice cap, which gives rise to small coastal glaciers and to immaculately white inland landscapes. At the end of the winter, the island unveils a magical face, between stretching ice, crystal-clear polar light and frozen fjords, offering the perfect setting for polar exploration. At this period, the south of the island is also home to bowhead whales, one of the rarest species in the world, which spend the winter in these polar waters.

#### Days 7 - 8 - Sisimiut

During your cruise, we invite you to discover Sisimiut, founded in 1756 and the second largest town in Greenland. This small town is typical of Greenland, boasting bewitching panoramas: here and there, colourful stilt houses dot the undulating landscape, and the small fishing port stands as the gateway to an icy realm. As for the town centre, it is home to a number of historic buildings, a small church and a museum which retraces the history of the Inuit people, as well as many craft shops. When your ship drops anchor here, you will set out to meet the locals in a typically arctic atmosphere.

#### Day 9 - Baffin Bay Exploration

In the icy waters of Baffin Bay, you will sail into the heart of the scattered sea floe. You will be captivated by icebergs in dreamlike shapes as your ship takes you into the ice of the Far





## The Small Cruise Ship Collection

[www.small-cruise-ships.com](http://www.small-cruise-ships.com)

[small-cruise-ships.com](http://small-cruise-ships.com)

[info@small-cruise-ships.com](mailto:info@small-cruise-ships.com)

North. Everything comes in shades of white here and, if you watch closely, you may get a glimpse of the lord of this kingdom, the polar bear. This fascinating animal finds its food in the heart of the ice, so this is where you have more chances of spotting it. The polar light gives a shine to the ice floe that you sail along as you explore Baffin Bay, leaving you with memories of unforgettable moments.

### Day 10 - Narsarsuaq Region

The Narsarsuaq region is a veritable Arctic jewel, famous for its majestic landscapes and its historic and cultural treasures. Fall under the spell of the untamed power of this region's deep fjords, between sheer cliffs and impressive summits, during a Zodiac cruise on the Bredefjord. You will navigate among the icebergs with their fascinating shapes and blue tones, or set off to explore the neighbouring island for a total immersion in this grandiose nature. You will also discover the local history and culture by visiting the remarkably well-preserved Viking vestiges - evidence of a rich past and a reminder that they were the first to discover Greenland in 942 (Erik the Red) - or the charming village of Qassarsuk, where you will learn more about the way of life of local communities.

### Day 11 - Qaqortoq

Follow the Davis Strait currents and Qaqortoq, the largest town in southern Greenland, reveals itself in a rocky setting covered in immaculate white in winter and enchanting green in summer. From the moment your ship enters the fjord edging the town, off in the distance you will be able to glimpse the delightful,

brightly-coloured houses built upon the hillsides surrounding this charming fishing port, the most southerly in Greenland. You will have the opportunity to wander around the streets of the town centre which have distinct Danish influences and are home to numerous historical buildings and landmarks, such as the country's famous and oldest fountain, topped with whales. Not far from there, you will also have the chance to discover the town's open-air fish market, where fishermen come to sell the day's catch.

### Day 11 - Uunartoq Hot Springs

In the heart of Greenland's icy waters lies the island of Uunartoq, a harsh and wild land forged by the constant Arctic winds. Discovered in 2005 by explorer Dennis Schmitt, Uunartoq is an impressive island of sheer cliffs sculpted by the relentless waves and home to unexpected natural wonders. An icy mantle covers every part of this austere land, with the exception of a hidden cove where hot springs defy the harshness of the Arctic cold. Surrounded by icebergs and drifting glacial ice, Uunartoq offers an unusual activity: the chance to swim in a natural pool carved out of the rock. Here, after a polar hike, you will have the opportunity to shed your winter clothes, immerse yourself in these relaxing springs and let the warmth soothe each of your muscles as it envelops your body.

### Day 12 - Aappilattoq (Augpilatok)

Aappilattoq (Augpilatok), is a small Inuit village of around one hundred inhabitants, whose name means "sea anemone" in



Greenlandic. Located in a mountainous region inaccessible by road, its picturesque, colourful houses stretch out to the southern tip of Greenland, on the banks of the spectacular Prince Christian Sound. Some one hundred kilometres long, the sound connects the Labrador Sea to the Irminger Sea, meandering through stunning landscapes such as majestic glaciers, craggy peaks, and rocky cliffs with waterfalls fed by the ice sheet. This region was uninhabited in the 19th century. The village was created in the 1920s and the main activities revolve around hunting, fishing and livestock farming.

#### [Days 12 - 13 - Exploring Prins Christian Sund](#)

The Prince Christian Sound natural strait is located in the south of Greenland and connects the Labrador Sea to the Irminger Sea. It is home to a veritable labyrinth of spectacularly beautiful steep fjords. Imposing mountains, majestic glaciers and grandiose cliffs offer a unique sailing experience, during which you will perhaps be lucky enough to glimpse bearded seals relaxing on the ice. This exceptional natural setting is also an invitation to walking and polar hiking in the heart of striking Arctic landscapes. Within this wild setting, the village of Aappilattoq, founded in the 1920s, will reveal itself. Fall under the charm of its church in which you will hear the songs of a welcoming choir, and discover the traditional way of life of its inhabitants, focused on hunting, fishing and livestock farming.

#### [Day 13 - Kujalleq Glacier](#)

In the immense and mythical Greenland, in the Prince Christian Sound region, your ship will make its way to the Kujalleq

Glacier. You will be captivated by this frozen tongue, in front of which dance small icebergs and a few growlers. Growler is the surprising name given to chunks of ice that are smaller fragments of an iceberg. They are either white or, more remarkably, blue-green. Birds fly in your wake and bearded seals observe you from afar, stretched out on granite rocks. Combined with the surrounding ice, these rocks form a magical landscape that immerses you in the polar realm.

#### [Day 14 - 15 - At sea aboard Le Commandant Charcot](#)

Spend exceptional moments sailing aboard Le Commandant Charcot, the world's first luxury polar exploration vessel and the first PC2-class polar cruise ship capable of sailing into the very heart of the ice, on seas and oceans which the frozen conditions render inaccessible to ordinary ships. Le Commandant Charcot is fitted with oceanographic and scientific equipment selected by a committee of experts. Take advantage of the on-board lectures and opportunities for discussion with these specialists to learn more about the poles. Participate in furthering scientific research with PONANT and let us discover together what these fascinating destinations have yet to reveal to us.

#### [Day 16 - Reykjavík](#)

Iceland's capital stretches along the edge of a vast bay in the west of the country. Perlan, the "Pearl of Reykjavik", a museum located on 'Oskjuhlíð hill, offers a panoramic view of the lush, green landscapes. A little further, one can easily spot the signpost showing the way to the evangelical Hallgrímskirkja church, and to the historical centre where one can stroll along



the Skolavordustigur and the Laugavegur, two lively streets with charming small shops. For some relaxation just outside of the city, visitors have the opportunity to visit the Reykjanes peninsula and its famous thermal lagoons of the Blue Lagoon.

Please note:

Itineraries are subject to change.





## YOUR SHIP: LE COMMANDANT-CHARCOT

**YOUR SHIP:** Le Commandant-Charcot

**VESSEL TYPE:**

**LENGTH:**

**PASSENGER CAPACITY:**

**BUILT/REFURBISHED:**

With its hybrid propulsion combining liquefied natural gas (LNG) and electric generators, Le Commandant-Charcot has been designed to minimise the environmental impact of travel to the furthest latitudes. The decoration of the ship, designed by two internationally renowned design and architecture firms - the studio of Jean-Philippe Nuel and Wilmotte & Associes - is designed to be in harmony with the environment. The approach is contemporary with the desire to create a warm and elegant setting; stone, wood and leather recall the natural environment in which the ship is sailing. Equipped with just 135 staterooms including 31 suites with balconies and outside views, Le Commandant-Charcot welcomes you in an intimate and refined atmosphere. Outstanding gastronomy in the two restaurants, relaxation in the indoor pool surrounded by its winter garden, relaxation in the well-being area with sauna and Snow Room... Like on a private yacht, each of our guests is unique. **PUBLIC AREAS** Le Commandant-Charcot has many common areas that are designed and equipped to meet all of your needs while preserving the intimacy of each passenger. A 177 m<sup>2</sup> reception area includes: A reception/concierge desk, An expeditions desk, The ship's administrative services, The sales office, manned by

our Hospitality & Travel Manager officer, Our boutique which sells clothing, jewellery, beauty products, postcards and various accessories, The image & photo desk. The different lounges include a 302 m<sup>2</sup> main lounge including a 28 m<sup>2</sup> cigar lounge, a tea corner and a bar, with live music on selected evenings, A 400 m<sup>2</sup> panoramic bar and lounge, An open-air Bar. The recreation spaces Fitness & Beauty Corner: Fitness room: Elliptic, running machines, bicycles... Beauty Corner: Hairdresser, Massage rooms, Sauna, Snow Room, Nail Shop. Pool area: Indoor Pool and winter garden - Outdoor Pool Theatre: Capacity: 270-276 - Main show room for conferences and live entertainment on selected evenings - State-of-the-art audio and video technology. Leisure area: Public areas - Library - Medical centre. 16



Zodiacs on board.



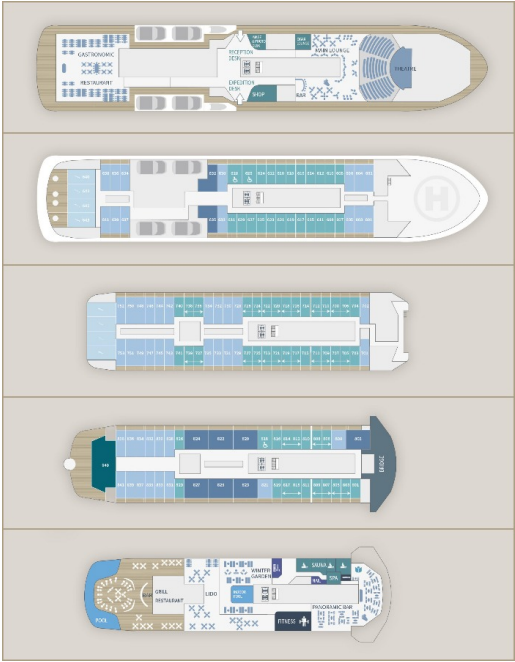
The Small Cruise  
Ship Collection

[www.small-cruise-ships.com](http://www.small-cruise-ships.com)

[small-cruise-ships.com](http://small-cruise-ships.com)

[info@small-cruise-ships.com](mailto:info@small-cruise-ships.com)

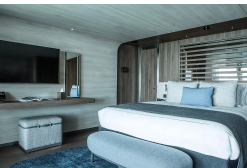
# INSIDE YOUR SHIP



Deluxe Suite Deck 6



Deluxe Suite Deck 8



Deluxe Suite Deck 7

Duplex Suite

Grand Prestige Suite

Prestige Stateroom Deck 7

Prestige Suite Deck 7

Prestige Stateroom Deck 6

Prestige Stateroom Deck 8

Prestige Suite Deck 8



The Small Cruise  
Ship Collection

[www.small-cruise-ships.com](http://www.small-cruise-ships.com)

01432 507 280 (within UK)

[info@small-cruise-ships.com](mailto:info@small-cruise-ships.com) | [small-cruise-ships.com](http://small-cruise-ships.com)





The Small Cruise  
Ship Collection

[www.small-cruise-ships.com](http://www.small-cruise-ships.com)

[small-cruise-ships.com](http://small-cruise-ships.com)

[info@small-cruise-ships.com](mailto:info@small-cruise-ships.com)

## PRICING

28-Apr-2027 to 13-May-2027

Prestige Suite Deck 8	£26285 GBP pp
Deluxe Suite Deck 6	£18525 GBP pp
Prestige Suite Deck 7	£25475 GBP pp
Prestige Stateroom Deck 7	£17715 GBP pp
Grand Prestige Suite	£27095 GBP pp
Deluxe Suite Deck 8	£19979 GBP pp
Deluxe Suite Deck 7	£19329 GBP pp
Prestige Stateroom Deck 6	£17395 GBP pp
Privilege Suite Deck 8	£28709 GBP pp
Prestige Stateroom Deck 8	£18035 GBP pp
Duplex Suite	£39219 GBP pp



The Small Cruise  
Ship Collection

[www.small-cruise-ships.com](http://www.small-cruise-ships.com)

01432 507 280 (within UK)

[info@small-cruise-ships.com](mailto:info@small-cruise-ships.com) | [small-cruise-ships.com](http://small-cruise-ships.com)