



DISKO BAY AND INUIT VILLAGES - GREENLAND LUXURY EXPEDITION

This PONANT itinerary is your chance to embark on an 8-day expedition cruise to Greenland. In Kangerlussuaq, aboard Le Boreal, you will embark for an unforgettable journey in the heart of the most magnificent Arctic landscapes. After a first port of call at Sisimiut, Greenland's second-largest city, a colourful port nestling between undulating hills, the world of ice will open up to you during this cruise along Greenland's northwestern coast. You will then set sail north for Qeqertarsuaq, one of just two villages on Disko Island. In the heart of this spectacular and fragile nature, enjoy the breath-taking views of grandiose and varied landscapes. You will cross Disko Bay for the first time to reach the edges of the Eqi Glacier, an icy giant with crystalline reflections, and the Paul-Emile Victor research station. Disko Bay and the colourful villages of Uummannaq and Akulleq encircled by mountains and basalt formations will welcome you next with their majestic icebergs - some of the largest in the Northern Hemisphere. This is the ideal opportunity for meeting the local population and learning about Greenland's Inuit culture. This is the ideal opportunity for meeting the local population and learning about Greenland's Inuit culture before reaching the steep cliffs where nest many birds in Evighedsfjorden, the fjord of Eternity. During your cruise and zodiac outings, you will have many opportunities to admire an abundant and varied marine fauna with seals and whales, not to mention the many species of seabirds.



ITINERARY

Day 1 KANGERLUSSUAQ

From 1941 to 1992, the town of Kangerlussuaq in Greenland was home to an American military base. Nowadays, thanks to its international airport, it has become a transit point for travellers seeking adventure in the Far North. Located to the north of the Arctic Circle, this town is the starting point of magnificent discoveries surrounded by unspoiled nature. Indeed, just a few dozen kilometres from there it is possible to get close to the Greenland ice sheet, the largest body of ice in the Northern Hemisphere. From Kangerlussuaq, admire also the superb



landscapes of tundra in autumnal colours, where Arctic hares, musk oxen, Arctic foxes, reindeer, falcons and eagles live.

Day 2 EVIGHEDSFJORDEN

Your ship glides slowly along the water towards the west coast of Greenland, to enter Evighedsfjorden, just a few kilometres south of Kangerlussuaq. Evighedsfjorden means "the fjord of Eternity", and for good reason: just when you think you've reached the end of this stretch of sea measuring over 100 kilometres in length, it seems to go on forever, as though to bring even more pleasure to those sailing in it. The spectacular scenery ranges from glaciers to tundra with an abundant flora, and jagged cliffs where numerous bird species have taken up residence. Take the time to observe the white-tailed eagles and the colonies of seagulls and black-legged kittiwakes flying overhead in the area.

Day 3 SISIMIUT

During your cruise, we invite you to discover Sisimiut, founded in 1756 and the second largest town in Greenland. This small town is typical of Greenland, boasting bewitching panoramas: here and there, colourful stilt houses dot the undulating landscape, and the small fishing port stands as the gateway to an icy realm. As for the town centre, it is home to a number of historic buildings, a small church and a museum which retraces the history of the Inuit people, as well as many craft shops. When your ship drops anchor here, you will set out to meet the locals in a typically arctic atmosphere.

Day 4 PAUL-ÉMILE VICTOR BASE CAMP, EQI GLACIER

"The most beautiful place in the Arctic" is how Paul-Émile Victor described Greenland, a land of great icebergs and of towering ice formations calved by the giant glaciers of the polar ice cap. The Eqi Glacier is one of the region's most impressive sights. Here, the silence is broken only by the roaring and cracking of the ice. It is impossible to know if one is shivering from cold or from the sheer thrill of being here... Imagine the vast outline of a glacier, its translucent crystals glowing with an ice-blue fire in the sunlight. Paul-Émile Victor's shelter cannot be overlooked; it was from here that the French Polar Expeditions' anthropological and geographic explorations set off in the 1950s.

Day 5 AKULLEQ & UUMMANNAQ

In the curve of Uummannaq Bay, opposite a narrow passage between two islands, you will discover the moonscape of the small desert island of Akulleq. The ochre yellow and orange of this mineral site look ablaze under the sunshine of the polar summer. From the island's summit you will be able to contemplate a panoramic view of the bay's magical landscape and its huge icebergs with surprising shapes. The "heart-shaped" rock overlooking it is what inspired the name of the island and village of Uummannaq, where the locals will welcome you with their incredible sense of hospitality and humour, essential to their survival in these northern lands. Seven Inuit villages also dot this territory where people still get around on dog sleighs or in kayaks. Mingling tradition, respect for nature and modernity, the authentic and lively atmosphere that reigns nowadays in this region inhabited since the 15th



The Small Cruise Ship Collection

www.small-cruise-ships.com

small-cruise-ships.com

info@small-cruise-ships.com

century will win over visitors, as will the magnificent landscapes that compose it, a mix of peninsulas and of peaks standing more than 2,000 metres tall.

Day 6 DISKO BAY

To the east of Baffin Bay, discover Disko Bay, scattered with countless icebergs produced by the Ilulissat Icefjord, a UNESCO World Heritage Site. From your ship, admire the majestic ballet of these ice giants as they slowly drift across the dark waters. This site is a natural marvel of Greenland, and is also renowned as an observation point for the region's many humpback whales. The encounters with wild fauna and stunning landscapes in the heart of this spectacular and fragile nature will be pure moments of wonder for you.

Day 7 QEQTARSUAQ & AT SEA

On the southern coast of Disko Island lies Qeqertarsuaq, one of just two small villages on this island the size of Corsica. Its isolation makes it an observation post popular among naturalists since the beginning of polar exploration and the set-up, in 1906, of the Arctic Centre research facility. This site is a natural marvel of Greenland, and is renowned as an observation point for the region's many humpback whales. The possible encounters with wildlife and stunning landscapes in the heart of this spectacular and fragile natural environment will be moments of sheer wonder for you, particularly from the top of the Lyngmark Glacier, which offers breathtaking views of the stunning and varied landscapes of Disko Bay and Disko Island.

Day 8 KANGERLUSSUAQ

From 1941 to 1992, the town of Kangerlussuaq in Greenland was home to an American military base. Nowadays, thanks to its international airport, it has become a transit point for travellers seeking adventure in the Far North. Located to the north of the Arctic Circle, this town is the starting point of magnificent discoveries surrounded by unspoiled nature. Indeed, just a few dozen kilometres from there it is possible to get close to the Greenland ice sheet, the largest body of ice in the Northern Hemisphere. From Kangerlussuaq, admire also the superb landscapes of tundra in autumnal colours, where Arctic hares, musk oxen, Arctic foxes, reindeer, falcons and eagles live.

Please Note:

Itineraries are subject to change.



The Small Cruise Ship Collection

www.small-cruise-ships.com

small-cruise-ships.com

info@small-cruise-ships.com

YOUR SHIP: LE BOREAL

YOUR SHIP:

Le Boreal

VESSEL TYPE:

142 metres. Passenger Capacity:
264 (in twin cabins, just 200 in
Antarctica). Built: 2011

LENGTH:

PASSENGER CAPACITY:

BUILT/REFURBISHED:

Luxury Expedition / Cruise Ship A superb mega-yacht with 132 cabins, she is the fruit of the expertise of the Italian Fincantieri shipyard and French sophistication, as interpreted by designer Jean-Philippe Nuel. Le Boreal creates a unique atmosphere, a subtle blend of luxury, intimacy and well-being. The best materials, discreet elegance and a tasteful decor combined with exterior and interior lines to reflect a nautical mood. On board, soothing neutral tones are enlivened by splashes of red, our signature theme linking tradition and innovation to create personal touches in the spirit of a "private yacht". Cuisine Loyal to the great French tradition, the haute cuisine on board is worthy of the finest restaurants, where discreet, attentive service is the hallmark. Choose from two restaurants for breakfast, lunch and dinner. The Gastronomic Restaurant is situated on Le Liberte Deck and serves you French and international cuisine accompanied by fine wine. In the Grill Restaurant, you have the opportunity to eat outside and enjoy buffet lunch and themed dinner. Life On Board Whether you want to join other guests in the theatre or games area (Wii™ consoles, etc), or relax on your

own in a quiet corner of the library, Le Boreal has been designed to meet the needs of every guest. Everything has been done to preserve the independence of each guest to suit their personal tastes: lounges for lectures and shows, a spa in partnership with Carita™, but also more intimate spaces such as the library and internet corner. Comfortable cabins, nearly all with private balcony, are available for families either as triples or as communicating cabins. There is also a games area with Wii™ consoles, children's menus, and a baby-sitting service. Just as if you were on a private yacht, your time is your own to do as you please. Fitted with the latest equipment (Kinesis Wall, running machine) and in partnership with the famous Carita™ brand, the Beauty Centre on Le Boreal welcomes you for some relaxation and pampering (beauty treatments, hairdresser, hammam, balneotherapy). Wheelchairs 3 specially adapted wheelchair cabins (Deck 3 = Superior cabin no. 307, no balcony, Deck 4 = Prestige Cabin no. 407 - with balcony and Deck 5 = Prestige Cabin no 509, with balcony) and lifts to all decks/areas. Please click the following links to read more about Ponant and the other Ponant



The Small Cruise Ship Collection

www.small-cruise-ships.com



small-cruise-ships.cominfo@small-cruise-ships.com

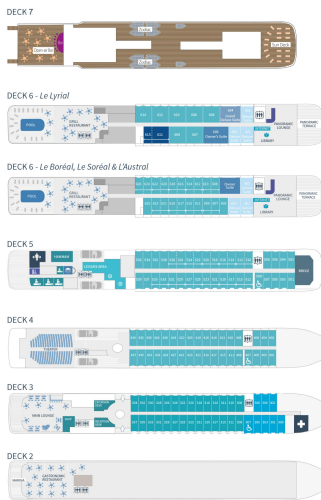


cruise ships.



INSIDE YOUR SHIP

Deck plans - Le Boréal, L'Austral, Le Soléal & Le Lyrial



DECK 7
Open air bar - Sun deck

DECK 6:
Le Boréal, L'Austral, Le Soléal: Owner's Suite - 3 Deluxe Suites with private balcony - 20 Prestige staterooms with private balcony (with 18 Prestige staterooms convertible into 9 Prestige suites)
Le Lyrial: Owner's Suite - 1 Grand Privilege Suite - 3 Deluxe Suites with private balcony - 3 Grand Deluxe Suite - 8 Privilege Suites - 1 Prestige stateroom - Pool - Grill Restaurant - Internet space - Library - Panoramic Lounge - Panoramic terrace

DECK 5:
27 Prestige staterooms with private balcony (with 22 Prestige staterooms convertible into 14 Prestige suites) - Fitness - PONANT yacht spa (hot tubs, hammam, massage, treatment) - Relaxation room - Image & photo desk - Bridge

DECK 4:
26 Prestige Staterooms with private balcony - Theater

DECK 3:
26 Deluxe Staterooms with private balcony - 8 Superior Staterooms - Main lounge - Shop - Reception Desk - Excursion Desk - Medical center

DECK 2:
Gastronomic Restaurant - Marina

Owner's Suite
Deck 6

Prestige Suites
Deck 6 - Le Lyrial

Grand Privilege Suite
Deck 6 - Le Lyrial

Prestige Suites
Port 6 - 5 except Le Lyrial

Grand Deluxe Suites
Deck 6 - Le Lyrial

Deluxe Suites
Deck 6

Prestige Staterooms
Deck 4 - 5 - 6

Deluxe Staterooms
Deck 3

Superior Staterooms
Deck 3



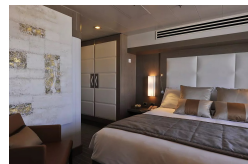
DeLuxe Stateroom



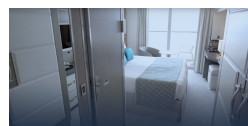
Deluxe Suite



Owner's suite



Prestige Stateroom - Deck 4



Prestige Stateroom - Deck 5

Prestige Suite - Deck 5

Prestige Stateroom - Deck 6

Prestige Suite - Deck 6



The Small Cruise
Ship Collection

www.small-cruise-ships.com

small-cruise-ships.com

info@small-cruise-ships.com

PRICING

18-Aug-2025 to 25-Aug-2025

Prestige Stateroom - Deck 5	£9695 GBP pp
Deluxe Suite	£13435 GBP pp
Superior Stateroom	£8045 GBP pp
Prestige Suite - Deck 6	£18385 GBP pp
Prestige Suite - Deck 5	£17555 GBP pp
Prestige Stateroom - Deck 4	£9315 GBP pp
Prestige Stateroom - Deck 6	£10139 GBP pp
DeLuxe Stateroom	£8569 GBP pp
Owner's suite	£26857 GBP pp

ADDITIONAL CHARGES: Port Taxes & Fees 520 AUD pp



The Small Cruise
Ship Collection

www.small-cruise-ships.com

01432 507 280 (within UK)

info@small-cruise-ships.com | small-cruise-ships.com