





## The Small Cruise Ship Collection

[www.small-cruise-ships.com](http://www.small-cruise-ships.com)

[small-cruise-ships.com](http://small-cruise-ships.com)

[info@small-cruise-ships.com](mailto:info@small-cruise-ships.com)

of Vietnam's bustling metropolis. After lunch onboard you will meet the crew and enjoy local entertainment on the deck as we sail toward the Mekong Delta. We moor overnight on the Vam Co River.

### DAY 2 BEN TRE AND THE FERTILE WATERWAYS

Early morning we set sail through the Cho Gao Canal, a vital waterway link for the transportation of goods to and from the city which was constructed in 1876 by the French and offers a fascinating insight to life along the water. We reach Ben Tre and journey by sampans through mangroves and bamboo forests to the fruit orchards abundant in the area. This is a fertile farming region with half of Vietnam's rice production coming from the Mekong Delta. It also hosts a rich artisanal culture which we will witness at a local village specialising in handicrafts. Back aboard we sail deeper into the delta toward Chau Doc.

### DAY 3 CHAU DOC AND INTO CAMBODIA

In the morning, we take minivans for a short drive to Sam Mountain, the location of Phuoc Dien Tu or the Hang Pagoda. After climbing the steps we are greeted with stunning views across the Mekong. For those not keen on the stairs, explore the local market instead. Afterwards, we visit the nearby floating fish farms by Sampan before being treated to a private Lion dance performance at a local Village. Upon return to the ship, we navigate a web of canals before dropping anchor on the Vietnam/Cambodia border to undergo Immigration formalities.

### DAY 4 PHNOM PENH

Morning orientation of Phnom Penh by cyclo visiting the Royal Palace and Silver Pagoda followed by the National Museum with its marvellous collection of Angkorian statuary. In the afternoon we visit the Killing Fields and Genocide Museum to learn more about the brutal Khmer Rouge regime. We dock overnight in Phnom Penh city port with its lively bars, restaurants and nightlife. Feel free to explore the city before returning to your hotel on the water.

### DAY 5 PEAM CHI KORNG POTTERY VILLAGE

Enjoy morning Tai Chi or just a coffee on deck as we take a sunrise cruise to Peam Chi Korng, an untouched gem that is a hub of pottery in Cambodia. After a short tuk tuk ride from the banks of the Mekong, we witness the local potters in action before continuing to explore the village and local fresh market where you can test your language skills.

### DAY 6 KOH TRONG ISLAND TREE PLANTING

Visit Koh Trong Island, a community based tourism site since 2008. We explore the island's fruit orchards by local transportation or bicycle and sample the local delicacies before we head to a community reforestation project and plant trees to support the island. Moor overnight alongside the island.

### DAY 7 KRATIE AND THE DOLPHIN GROUNDS

The Small Cruise Ship Collection  
[www.small-cruise-ships.com](http://www.small-cruise-ships.com)

01432 507 280 (within UK)

[info@small-cruise-ships.com](mailto:info@small-cruise-ships.com) | [small-cruise-ships.com](http://small-cruise-ships.com)





## The Small Cruise Ship Collection

[www.small-cruise-ships.com](http://www.small-cruise-ships.com)

[small-cruise-ships.com](http://small-cruise-ships.com)

[info@small-cruise-ships.com](mailto:info@small-cruise-ships.com)

### DAY 10 TONLE SAP FLOATING VILLAGES

Continue the traverse of the great lake stopping to visit a floating village where houses, schools and restaurants are all accessed only by boat. Learn more about how these communities survive on the water and how their lives are changing with the development of Cambodia. In the afternoon we continue across the lake toward Siem Reap inland port. This is the perfect chance to spot the various bird life along the lake's edges as well as crocodiles and snakes that are abundant in these shallow waters. Not to forget also the giant Mekong catfish, the largest ever caught being 648 pounds in May 2004. There are 148 other species of fish in the lake which provide the main source of protein for the entire Cambodian population.

### DAY 11 SIEM REAP DISEMBARKATION

Disembark Siem Reap Port and transfer the short distance to Siem Reap city. The short 45 minute road journey means arrival to Siem Reap around 10-10:30am at the FCC Angkor Hotel, located next to the Royal Palace.

Please Note:

Itineraries are subject to change.

After breakfast we head to Kampi by coach to spot the Irrawaddy dolphins abundant in the waters below Stung Trang. We board small fishing vessels now used to monitor the dolphin populations and provide dolphin spotting for tourists to raise awareness of their plight. Whilst numbers have increased in recent years, they remain endangered and we learn more about the work of locals to support dolphin numbers and how Pandaw is supporting. This is a real highlight of the expedition. In the afternoon, we set sail downstream along the Mekong back toward Phnom Penh.

### DAY 8 LIFE ON THE TONLE SAP RIVER

We sail early morning up the winding channels of the Tonle Sap River to Kampong Tralach. We travel by ox-cart around the river-side villages, markets and temples to get a sense of life in rural Cambodia. In the evening cocktails are served around a fire pit at a small fishing village where we will be joined by village folk keen to share tales and show us their traditional dancing.

### DAY 9 KAMPONG CHHNANG AND THE TONLE SAP LAKE

Today we explore the backwaters of the vast Tonle Sap floodplains, with abundant fish farms around this important trading town. Returning to ship, we enter the Tonle Sap Lake to moor overnight in open waters savoring the peace and tranquility of this lake that in high water covers 6,200 miles and in low water shrinks to 1,000 square miles.



## The Small Cruise Ship Collection

[www.small-cruise-ships.com](http://www.small-cruise-ships.com)

[small-cruise-ships.com](http://small-cruise-ships.com)

[info@small-cruise-ships.com](mailto:info@small-cruise-ships.com)

## YOUR SHIP: MEKONG PANDAW

**YOUR SHIP:** Mekong Pandaw

**VESSEL TYPE:**

**LENGTH:**

**PASSENGER CAPACITY:**

**BUILT/REFURBISHED:**

Built in Rangoon in 2002 she was sailed round to Saigon under her own power and many a drama described in Paul Strachan's Pandaw Story. This ship was designed specially for the Mekong and unlike our other P class ships does not have a flying bridge. The reason was so she could get under a road bridge. She did actually scrape under on her maiden but it was so scary that Paul Strachan, then standing on the bridge, never dared attempt it again. As a result, we ended up with this incredible 750 square meter teak deck that even has a full size billiard table. The MP as she is affectionately known is our most spacious ship with wider promenades, a larger dining hall and more public space per passenger than any known ship afloat. Seriously! In 2012 she was refitted and lower deck cabins removed in favour of a professional spa, gym, library lounge and office. She is quite justifiably the most splendid ship on the Mekong and the envy of anything that floats by. **ACCOMMODATION** 18 upper deck, 6 main deck staterooms - 170 square feet, finished in teak and brass - Panoramic French window, leading to personal deck space - New bathrooms with natural stone shower and branded quality fittings - Kimonos and slippers - Spa-branded amenities - Unlimited mineral water - Electric mini safe - Central

AC with individual control - Imported quality linens with duvet and two kind of pillows - Premium mattresses - Convertible bed configuration - Welcome flower arrangement and welcome gift - Mirror - Multi-configuration plugs - Generous closet space and under-bed storage - Hair dryer - Daily nightly turndown service - 24h laundry service - Complimentary evening canapes **WINING & DINING** Local master chef heading an experienced international culinary team - Semi-buffet breakfast, Semi-buffet lunch, and seated theme dinners - Daily lean & light menu options - Complimentary coffee, water, tea, soft drinks, local beer, local spirits, juices - Extensive wine list with premium wines - Series of cultural performances, educational talks, cooking classes, and ship tour - Welcome drink on arrival - Welcome cocktail - Farewell reception - Theme- and gala dinners - Spacious, air-conditioned saloon bar with nightly entertainment - Sundeck bar with complimentary ice cream from sunrise to sunset - Pool table on sundeck - 24hrs hospitality bar - Onboard bakery with daily freshly baked breads and rolls **ON EXCURSIONS** Admissions - Shoe cleaning after excursions - Bottled drinking water - Cold towel service after excursions - Refreshing drink following excursions - Maximum 24 guests per guide on all excursions - Full-size motor coach on all excursions (maximum of 24 passengers per coach) - Deluxe sampans with cold towel service, fresh fruit, and tea/coffee - Comfortable "Pandaw Explorer" excursion boat - 1st aid trained assistant guide to follow all tours and excursions **SAFETY & SECURITY** All onboard crew is trained and certified as per international marine standards (VIREs) - Fire alarm system in all cabins, public areas and back areas - Fire fighting system in all ship areas - Expert

The Small Cruise Ship Collection  
[www.small-cruise-ships.com](http://www.small-cruise-ships.com)

**01432 507 280** (within UK)

[info@small-cruise-ships.com](mailto:info@small-cruise-ships.com) | [small-cruise-ships.com](http://small-cruise-ships.com)





## The Small Cruise Ship Collection

[www.small-cruise-ships.com](http://www.small-cruise-ships.com)

[small-cruise-ships.com](http://small-cruise-ships.com)

[info@small-cruise-ships.com](mailto:info@small-cruise-ships.com)

marine superintendant - 24 hrs watch on duty - Certified hygiene standards for all areas (Johnson & Diversey) ONBOARD STAFF Captain - First Officer - Chief Engineer - 1st Engineer - Electrician - Bosun & nautical crew - Ship manager - Housekeeping - Dining - Bar keeper - Chefs - Spa therapist - Local tour guides PUBLIC SPACES Guest relation desk - Largest public space to passenger ratio of any cruise ship in the world - Shop, supporting fair trade - Lecture and meeting room with oversized flat screen TV, LSD projector and sound system - Art gallery featuring local art and artists - Library with contemporary and classic literature - Wireless internet in all



public areas.

The Small Cruise Ship Collection  
[www.small-cruise-ships.com](http://www.small-cruise-ships.com)

**01432 507 280** (within UK)

[info@small-cruise-ships.com](mailto:info@small-cruise-ships.com) | [small-cruise-ships.com](http://small-cruise-ships.com)

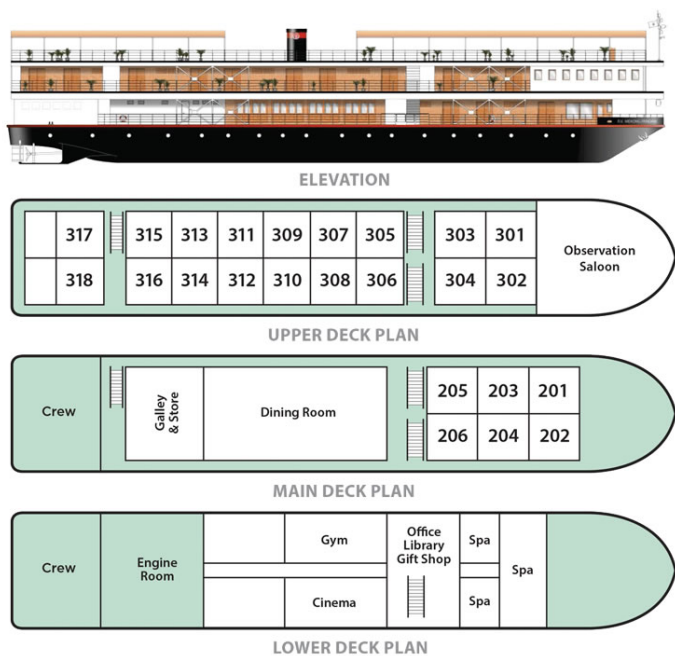
# The Small Cruise Ship Collection

www.small-cruise-ships.com

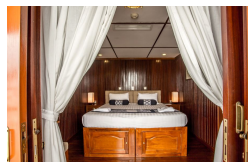
small-cruise-ships.com

info@small-cruise-ships.com

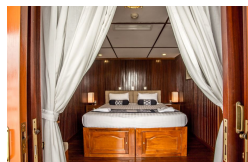
## INSIDE YOUR SHIP



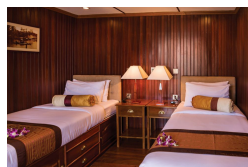
Main Deck Twin Sharing



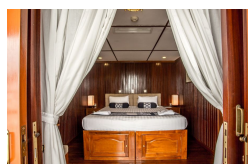
Main Deck Twin Sharing. From



Main Deck Twin Single Use



Upper Deck Twin Sharing



Upper Deck Twin Sharing. From

Upper Deck Twin Single Use



## The Small Cruise Ship Collection

[www.small-cruise-ships.com](http://www.small-cruise-ships.com)

[small-cruise-ships.com](http://small-cruise-ships.com)

[info@small-cruise-ships.com](mailto:info@small-cruise-ships.com)

## PRICING

### 22-Sep-2025 to 02-Oct-2025

Main Deck Twin Sharing. From	£4298 GBP pp
------------------------------	--------------

Upper Deck Twin Sharing. From	£5283 GBP pp
-------------------------------	--------------

### 03-Oct-2025 to 13-Oct-2025

Main Deck Twin Sharing. From	£4298 GBP pp
------------------------------	--------------

Upper Deck Twin Sharing. From	£5283 GBP pp
-------------------------------	--------------

### 01-Oct-2026 to 11-Oct-2026

Main Deck Twin Sharing	£4298 GBP pp
------------------------	--------------

Main Deck Twin Single Use	£5158 GBP pp
---------------------------	--------------

Upper Deck Twin Sharing	£5283 GBP pp
-------------------------	--------------

Upper Deck Twin Single Use	£6339 GBP pp
----------------------------	--------------

### 11-Oct-2026 to 21-Oct-2026

Main Deck Twin Sharing	£4298 GBP pp
------------------------	--------------

Main Deck Twin Single Use	£5158 GBP pp
---------------------------	--------------

Upper Deck Twin Sharing	£5283 GBP pp
-------------------------	--------------

Upper Deck Twin Single Use	£6339 GBP pp
----------------------------	--------------

### 21-Oct-2026 to 31-Oct-2026

Main Deck Twin Sharing	£4298 GBP pp
------------------------	--------------

Main Deck Twin Single Use	£5158 GBP pp
---------------------------	--------------

Upper Deck Twin Sharing	£5283 GBP pp
-------------------------	--------------

Upper Deck Twin Single Use	£6339 GBP pp
----------------------------	--------------

### ADDITIONAL CHARGES:

Port Taxes & Fees 90 USD pp