

The Small Cruise Ship Collection

www.small-cruise-ships.com

small-cruise-ships.com

info@small-cruise-ships.com

CRUISING THE AEGEAN: TURKEY AND THE GREEK ISLES — WITH SMITHSONIAN JOURNEYS

In alliance with Smithsonian Journeys. This cruise is part of a collection of PONANT voyages that are specially-tailored for English-speaking travelers who want to engage with the world. In addition to the usual elements of the PONANT experience, the listed price for these voyages includes transfers to and from the ship, talks and discussions aboard ship by world class experts, and a shore excursion or activity in each port of call that encourages guests to embrace the sights, sounds, tastes, and smells of the local environment and culture. Departing from Athens, Europe's oldest capital and birthplace of democracy, your first stop is Nafplion where you will travel to Mycenae, the legendary home of Agamemnon and an important center of the extraordinary civilization that flourished here in the 2nd millennium BC. Sail next to the island of Paros. Nestled in the heart of the Cyclades archipelago, this island reputed for its sublime white marble offers a concentration of Greek beauty, from whitewashed houses to olive groves and ancient monuments. The island of Delos was sacred to the ancient Greeks—the birthplace of Apollo and Artemis, and home to countless shrines and temples—a veritable open-air museum. Mykonos, by contrast, is a sophisticated island resort with smart cafes and boutiques, where you will enjoy an afternoon and evening at leisure to soak in all that this dazzling town has to offer. Kusadasi on Turkey's Aegean coast is your gateway to Ephesus, one of the world's greatest archaeological sites, spanning the period from the Hellenistic world through the early Christian era. The immense excavation here includes temples of several Roman emperors, the iconic Library of Celsus, and the terraced hill houses, with their splendid mosaics and frescoes,

overlooking the city below. Back in Greece, spend a day on Patmos and discover the monumental Byzantine monastery that guards the cave where St. John the Evangelist received his visions of the Apocalypse. You will also have time to explore the island's Chora (main town), home to an 11th-century monastery and to a labyrinth of picturesque, cobbled streets and arched alleyways. From Canakkale, Turkey, you may travel south to explore ancient Troy, site of the war that is the subject of Homer's Iliad, or cross the Dardanelles to visit the World War I battlefield and cemeteries at Gallipoli. Your journey concludes in Istanbul, capital of the Roman, Byzantine, and



Ottoman Empires.

The Small Cruise Ship Collection
www.small-cruise-ships.com

01432 507 280 (within UK)

info@small-cruise-ships.com | small-cruise-ships.com



The Small Cruise Ship Collection

www.small-cruise-ships.com

small-cruise-ships.com

info@small-cruise-ships.com

ITINERARY

Day 1 Athens

The Greek capital city is located on the edge of the Saronic gulf, in the east of the country. It bears a plural name in reference to the first villages that surround the Acropolis. You will be enchanted by the rocky plateau presided by its monuments listed as UNESCO World Heritage. In the city below, you can visit some of the liveliest districts in Athens: Plaka, with its maze of colourful streets, and where, in the evenings the drifting aroma of moussaka and garlic prawns will tickle your taste buds. The National Archaeological museum and the Cycladic Art Museum are also some of the city's key attractions and allow visitors to discover Athens' cultural past.

Day 2 Nafplion

The engaging town of Nafplion is staggered up green hillsides of the Argolic Gulf, to the east of the Peloponnese. Do not be surprised by its extremely varied cultural heritage. Some of the must-see visits are the ancient agora on the plateau of Akronafplia, Italianate arcades in Syntagma square as well as the baroque fortress of Palamidi on a hillside of the same name. At the top of the hill, views of the gulf and the surrounding mountains are simply awesome. If you want to chill out by the water's edge, walk along the Arvanitia promenade to a beautiful creek in the shade of cedars and cypresses.

Day 3 Paros

Famous for its white marble, the island of Paros is located in the Cyclades. Along the quays of Parikia, its main town, you'll see Byzantine churches and neoclassical buildings. To make the most of the turquoise waters, you can stop over in Naoussa. This little fishing port is bounded by a very beautiful cove.

Day 4 Delos & Mykonos

This legendary Cyclades island of Delos stands just a few miles southwest of Mykonos. The ceremonial solemnity of this ancient holy sanctuary will not leave you indifferent. The sheer size and importance of this UNESCO World Heritage site which covers over half of the island is thrilling in itself. From the Stoa of Antigonos, the Terrace of the Lions, to the carved marble animal statues, you will make discovery after discovery, against a backdrop of the Aegean stretching to the horizon. The theatre steps on the hillside are a particularly good place from which to enjoy the expansive view.

Nicknamed "little Venice", Mykonos is famous for its Alefkandra district where houses are built right on the water's edge. Their multi-coloured loggias are emblematic of this Cyclades island, as are the pelicans and windmills. You can get close up to the birds on the quaysides of the old port. Up on the hillside, you can see the windmill sails turning. In the cobbled streets of the pedestrian centre, bougainvillea bedeck immaculate facades. As you weave in and out of the little streets, snatches of coastline will undoubtedly call you to the island's beaches, the quietest of which can be found on the northern coast.

The Small Cruise
Ship Collection
www.small-cruise-ships.com

01432 507 280 (within UK)

info@small-cruise-ships.com | small-cruise-ships.com



The Small Cruise Ship Collection

www.small-cruise-ships.com

small-cruise-ships.com

info@small-cruise-ships.com

Day 5 Kusadasi

The attractive seaside resort of Kusadasi is located in a gulf on the western coast of Turkey. You can bathe there in clear waters or stroll along the coastal walk, in the shade of palms. In the historical district, you can take a mosey down the narrow streets and explore the colourful shops in the bazaar. Close by, the Ephesus archaeological site in the hillsides provides an opportunity to discover the ruins of one of the most famous cities of Antiquity.

Day 6 Patmos

Patmos is one of the legendary must-see islands in the Dodecanese. This is where Saint John resided, presumed author of the last book in the Bible. The cave of the Apocalypse and the Saint John Monastery are dedicated to him. These sites, which are listed by UNESCO as World Heritage, are located at the top of a hillside planted with vines and orchards. On the shore, the crystalline coves of Kambos and Lampi offer absolutely gorgeous swimming areas.

Day 7 Canakkale & Sailing in the Dardanelles

Çanakkale is located on the edge of the straits of the Dardanelles, in the north-west of the country. On the promenade alongside the harbour, you'll come across a contemporary sculpture of an immense wooden horse evoking Odysseus' legendary scheme to take Troy. In the Archaeological Museum, you'll see artefacts found during the excavations made in the

ancient city. Thirty or so kilometres south of Çanakkale, you can also visit the archaeological site of Troy, a UNESCO World Heritage site. Rising out of the luxuriant Mediterranean vegetation, you'll see many stone walls, sculptures and inscriptions, as well as a theatre with stone tiers.

The Dardanelles Strait is an emblematic, 61 km-long waterway connecting the Aegean Sea with the Sea of Marmara. It is strategic for controlling passage between the Mediterranean Sea and the Black Sea. Like the Bosphorus, or Strait of Istanbul, it separates Europe from Asia. A surface current flows along it, while a more saline undercurrent flows in the opposite direction. Along the strait, you will be able to admire hilly landscapes and arid lowlands brightened by fields and groves of olive trees.

Day 8 Istanbul

Located on the Bosphorus, Istanbul is one of the most beautiful of all Turkish cities. Named Byzantium when founded by the Greeks, and then Constantinople under the Roman Empire, this city is steeped in history and, for this reason, is a listed UNESCO World Heritage site. Located on Sultanahmet hill, the great Blue Mosque, the mysterious Hagia Sophia and the vast Topkapi palace and its countless mosaics, dominate the Marmara Sea. In the Beyazit district, the Grand Bazaar allows to discover elegant covered passages. A little further away, delicate aroma of loukoum and spices will draw the visitors' attention at the Egyptian Bazaar.

Please note:

The Small Cruise Ship Collection
www.small-cruise-ships.com

01432 507 280 (within UK)

info@small-cruise-ships.com | small-cruise-ships.com



Itineraries are subject to change.



The Small Cruise Ship Collection

www.small-cruise-ships.com

small-cruise-ships.com

info@small-cruise-ships.com

YOUR SHIP: LE BOREAL

YOUR SHIP:

Le Boreal

VESSEL TYPE:

**142 metres. Passenger Capacity:
264 (in twin cabins, just 200 in
Antarctica). Built: 2011**

LENGTH:

PASSENGER CAPACITY:

BUILT/REFURBISHED:

Luxury Expedition / Cruise Ship A superb mega-yacht with 132 cabins, she is the fruit of the expertise of the Italian Fincantieri shipyard and French sophistication, as interpreted by designer Jean-Philippe Nuel. Le Boreal creates a unique atmosphere, a subtle blend of luxury, intimacy and well-being. The best materials, discreet elegance and a tasteful decor combined with exterior and interior lines to reflect a nautical mood. On board, soothing neutral tones are enlivened by splashes of red, our signature theme linking tradition and innovation to create personal touches in the spirit of a "private yacht". Cuisine Loyal to the great French tradition, the haute cuisine on board is worthy of the finest restaurants, where discreet, attentive service is the hallmark. Choose from two restaurants for breakfast, lunch and dinner. The Gastronomic Restaurant is situated on Le Liberte Deck and serves you French and international cuisine accompanied by fine wine. In the Grill Restaurant, you have the opportunity to eat outside and enjoy buffet lunch and themed dinner. Life On Board Whether you want to join other guests in the theatre or games area (Wii™ consoles, etc), or relax on your

own in a quiet corner of the library, Le Boreal has been designed to meet the needs of every guest. Everything has been done to preserve the independence of each guest to suit their personal tastes: lounges for lectures and shows, a spa in partnership with Carita™, but also more intimate spaces such as the library and internet corner. Comfortable cabins, nearly all with private balcony, are available for families either as triples or as communicating cabins. There is also a games area with Wii™ consoles, children's menus, and a baby-sitting service. Just as if you were on a private yacht, your time is your own to do as you please. Fitted with the latest equipment (Kinesis Wall, running machine) and in partnership with the famous Carita™ brand, the Beauty Centre on Le Boreal welcomes you for some relaxation and pampering (beauty treatments, hairdresser, hammam, balneotherapy). Wheelchairs 3 specially adapted wheelchair cabins (Deck 3 = Superior cabin no. 307, no balcony, Deck 4 = Prestige Cabin no. 407 - with balcony and Deck 5 = Prestige Cabin no 509, with balcony) and lifts to all decks/areas. Please click the following links to read more about Ponant and the other Ponant

The Small Cruise
Ship Collection
www.small-cruise-ships.com

01432 507 280 (within UK)

info@small-cruise-ships.com | small-cruise-ships.com



The Small Cruise Ship Collection

www.small-cruise-ships.com



small-cruise-ships.com

info@small-cruise-ships.com



cruise ships.



The Small Cruise
Ship Collection

www.small-cruise-ships.com

01432 507 280 (within UK)

info@small-cruise-ships.com | small-cruise-ships.com

The Small Cruise Ship Collection

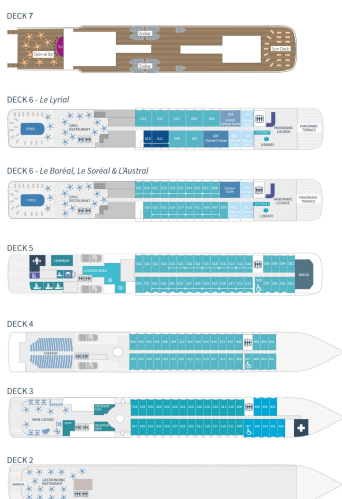
www.small-cruise-ships.com

small-cruise-ships.com

info@small-cruise-ships.com

INSIDE YOUR SHIP

Deck plans - Le Boréal, L'Austral, Le Soléal & Le Lyrial



DECK 7
Open air bar - Sun deck

DECK 6:
La Boréal, L'Austral, Le Soléal: Owner's Suite - 3 Deluxe Suites with private balcony - 20 Prestige staterooms with private balcony (with 18 Prestige staterooms convertible into 9 Prestige suites)
Le Lyrial: Owner's Suite - 1 Grand Privilege Suite - 3 Deluxe Suites with private balcony - 3 Grand Deluxe Suite - 8 Privilege Suites - 1 Prestige stateroom - Pool - Grill Restaurant - Internet space - Library - Panoramic Lounge - Panoramic terrace

DECK 5:
27 Prestige staterooms with private balcony with 22 Prestige staterooms convertible into 14 Prestige suites - Fitness - PONANT Yacht Spa (hot tubs, hammam, Massage, manicure) - Relaxation room - Image & photo desk - Bridge

DECK 4:
26 Prestige Staterooms with private balcony - Theater

DECK 3:
28 Deluxe Staterooms with private balcony - 8 Superior Staterooms - Main lounge - Shop - Reception Desk - Excursion Desk - Medical center

DECK 2:
Gastronomic Restaurant - Marina

Owner's Suite
Deck 6

Grand Privilege Suite
Deck 6 - Le Lyrial

Prestige Suite
Deck 6 - Le Lyrial

Grand Deluxe Suite
Deck 6 - Le Lyrial

Prestige Suites
Deck 6 - Le Lyrial

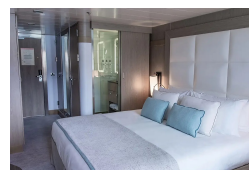
Prestige Staterooms
Deck 4 - 5 - 6

Deluxe Staterooms
Deck 3

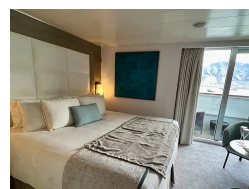
Superior Staterooms
Deck 3

PONANT

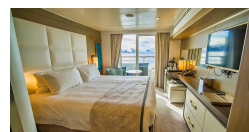
Deluxe Stateroom



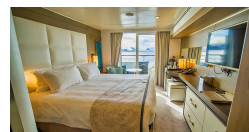
Deluxe Suite



Prestige Deck 4



Prestige Deck 5



Prestige Deck 5 Suite

Prestige Deck 6

Prestige Deck 6 Suite

Superior Stateroom

The Small Cruise Ship Collection
www.small-cruise-ships.com

01432 507 280 (within UK)

info@small-cruise-ships.com | small-cruise-ships.com



The Small Cruise Ship Collection

www.small-cruise-ships.com

small-cruise-ships.com

info@small-cruise-ships.com

PRICING

25-Jun-2026 to 02-Jul-2026

Prestige Deck 6	£5715 GBP pp
Superior Stateroom	£4325 GBP pp
Prestige Deck 4	£5169 GBP pp
Deluxe Suite	£7895 GBP pp
Deluxe Stateroom	£4675 GBP pp
Prestige Deck 5 Suite	£10635 GBP pp
Prestige Deck 6 Suite	£11175 GBP pp
Prestige Deck 5	£5415 GBP pp



The Small Cruise Ship Collection

www.small-cruise-ships.com

01432 507 280 (within UK)

info@small-cruise-ships.com | small-cruise-ships.com