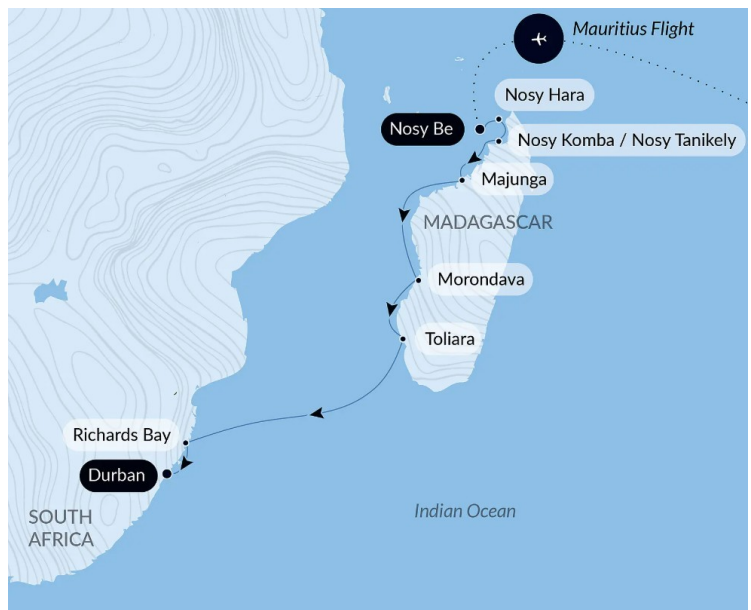




MADAGASCAR & SOUTH AFRICA LUXURY CRUISE

Under an endless sky where the azure blue flirts with the horizon, sail away on a magical journey between South Africa and Madagascar. Navigate between wild lands and ancient traditions, where every moment whispers the secrets of spectacular nature and ancestral stories, where every landscape is an invitation to contemplation and wonder. In these lands full of wonders and surprises, you will be captivated by the unique biodiversity, including lush tropical forests where mischievous lemurs roam, majestic baobabs that stand like silent giants, and pristine beaches lapped by turquoise waters. The vivid reds of the rock formations, the region's unique wildlife and the spectacular relief of the marine tsingy will captivate you. Here, time seems to stand still, leaving room to contemplate and marvel at the unspoilt nature and an infinitely rich heritage.



ITINERARY

Day 1 Nosy Be

Nosy Be (from the Malagasy: Nosy meaning island and Be meaning large), in the Mozambique Channel, is located near the north-eastern coastlines of Madagascar. A former French protectorate, known under the promising name of "the scented island", of volcanic origin, it is located on a maritime route with access to India and Asia. Cosmopolitan, a boulevard of encounters, its mixed-race and multicultural population still remembers its past as a significant trading post. Today, its 321 km² enchant lovers of nature and idyllic beaches. Its sumptuous primary forest is home to animals that are endemic to the island as well as surprising flora.



The Small Cruise Ship Collection

www.small-cruise-ships.com

small-cruise-ships.com

info@small-cruise-ships.com

Day 2 Nosy Hara

Its limestone rock formations rising from the waters, or marine "tsingies" typical of Madagascar, make Nosy Hara both exceptional and immediately recognisable. Located to the north-west of Madagascar, the island is a protected area due to its incredible biodiversity. It is a veritable open-air aquarium inhabited by around 280 marine species. The rocky columns edged with gorgeous white-sand and pebble beaches fading into shades of deep blue make an idyllic place cut off from the world. Succumb to the charms of this untouched jewel that will welcome you into its stunning decor for a special experience. This is an ideal location for snorkelling.

Day 3 Nosy Komba

During your cruise, your ship will stop in Nosy Komba, otherwise known as "lemur island". Not far from the Madagascar mainland, this volcanic island shaped like a gigantic turtle shell is covered in dense tropical rainforest. This vegetation is home to amusing black lemurs - furry orange-brown and black creatures that are surprisingly agile and call to each other from amongst the trees. The many small beaches and the emerald-coloured water make Nosy Komba a natural gem that only a select few visit.

Day 3 Nosy Tanikely

In the heart of the Nosy Be archipelago, discover Nosy Tanikely, nicknamed the "island of little earth." In addition to a magnificent white sand beach bordering a lagoon of crystal-clear waters, the island, which is uninhabited, has exceptional marine and terrestrial biodiversity. Thanks to this, the area has been classified as a "marine and coastal protected area" since 2010. It is a perfect spot for swimming and snorkelling. Hiking fans won't be left out either: a stunning walk

that climbs to the summit of the island will enable them to discover the old lighthouse built at the beginning of the 20th century and enjoy superb views over the ocean and surrounding islands.

Day 4 Majunga

A lively and cosmopolitan town on the west coast of Madagascar, Majunga, also called Mahajanga, will be a port of call rich in discoveries. The former capital of the Sakalava kingdom, then a significant interchange due to its prime position between Africa and the Middle East, the city displays an interesting cultural patchwork. Also renowned for its outstanding natural sites, this port of call will provide you with the opportunity to discover the Cirque Rouge, immense red sandstone formations classified as national heritage.

Day 5 At sea

During your journey at sea, make the most of the many services and activities on board. Treat yourself to a moment of relaxation in the spa or stay in shape in the fitness centre. Depending on the season, let yourself be tempted by the swimming pool or a spot of sunbathing. This journey without a port of call will also be an opportunity to enjoy the conferences or shows proposed on board, depending on the activities offered, or to do some shopping in the boutique or to meet the PONANT photographers in their dedicated space. As for lovers of the open sea, they will be able to visit the ship's upper deck to admire the spectacle of the waves and perhaps be lucky enough to observe marine species. A truly enchanted interlude, combining comfort, rest and entertainment.

Day 6 Morondava



The Small Cruise Ship Collection

www.small-cruise-ships.com

small-cruise-ships.com

info@small-cruise-ships.com

To the south-west of Antananarivo lies a peaceful city on the Mozambique Channel: Morondava, capital of the kingdom of Menabe, and departure point for many discoveries in the surrounding area. Bordered by the Mozambique Channel, the city is crossed by two rivers: the Mangoky and the Manambolo. Its many forests are full of abundant fauna and flora, especially the Kirindy Mitea National Park and its famous baobab alley.

Day 7 Toliara

Located to the south-west of the island of Madagascar, near the mouth of the River Onilahy, Toliara is a port town that opens onto the Mozambique Channel. Inhabited for several centuries, becoming prosperous during the colonial period in the 19th century, Toliara is a cheerful town with unspoilt nature and exceptional flora that will certainly appeal to fans of botany. The Antsokay Arboretum botanical garden with nearly 1,000 Madagascar plant species, 90% of which are endemic, is worth a fragrant and charming detour. Cultural heritage will not be outdone, with the interesting museums of Mahafaly ethnology and the Museum of the Sea.

Days 8 - 9 At sea

During your journey at sea, make the most of the many services and activities on board. Treat yourself to a moment of relaxation in the spa or stay in shape in the fitness centre. Depending on the season, let yourself be tempted by the swimming pool or a spot of sunbathing. This journey without a port of call will also be an opportunity to enjoy the conferences or shows proposed on board, depending on the activities offered, or to do some shopping in the boutique or to meet the PONANT photographers in their dedicated space. As for lovers of the open sea, they will be able to visit the ship's upper deck to admire the spectacle of the waves and perhaps be lucky enough to observe marine

species. A truly enchanted interlude, combining comfort, rest and entertainment.

Days 10 - 11 Richards Bay

A simple fishing village in the past, Richards Bay is now South Africa's second port. Despite the significant development of industrial activity, particularly in terms of mineral extraction, Richards Bay is one of the country's cleanest and most environmentally responsible towns. Bordering the Indian Ocean, the town is a haunt for water sport enthusiasts. In the heart of the Hluhluwe Game Reserve, nature lovers will be able to observe the wild fauna, made up of crocodiles, hippos and different bird species, as well as rich subtropical flora. Richards Bay is the departure point for many excursions heading off to discover Zulu country.

Day 12 Durban

Situated in the Kwazulu-Natal region, the cradle of Zulu culture, Durban is the third largest city in South Africa and one of Africa's major ports. Between long beaches rocked by the rollers of the Indian Ocean and the skyscrapers dominating the avenues lined with jacarandas, in this multicultural city with African, Indian and colonial influences, the term "rainbow nation" takes on its full dimension. With a rich cultural and historical heritage, with its museums, colonial buildings and picturesque neighbourhoods, it is also known for the fauna and flora that surrounds it.

Please note:

Itineraries are subject to change.



The Small Cruise
Ship Collection

www.small-cruise-ships.com

small-cruise-ships.com

info@small-cruise-ships.com

YOUR SHIP: LE BOUGAINVILLE

YOUR SHIP: Le Bougainville

VESSEL TYPE:

LENGTH:

PASSENGER CAPACITY:

BUILT/REFURBISHED:

Featuring innovative and environmentally-friendly equipment, elegantly designed cabins, spacious suites with large windows, and lounge areas that open onto the outside, this new limited-capacity yacht boasting just 92 cabins and suites will offer you a truly unique cruising experience. As the first ship in a new series that remains true to the Ponant spirit, Le Bougainville will embody the unique atmosphere that is the cruise line's hallmark: a subtle blend of refinement, intimacy and comfort. Aboard this ship that flies the French flag, you will experience the incomparable pleasure of an intimate cruise, with the possibility of exploring an ever-increasing range of destinations in an ethnic-chic ambiance with luxury service. Experience a luxurious setting where the accent is on authenticity and passion for travel. **RESTAURANTS** As it is an essential part of French culture, gastronomy will naturally have pride of place aboard this new ship. Through its two restaurants, Le Bougainville will invite you on a journey to elegance and epicureanism. In a relaxed atmosphere, a first dining area located on Deck 3 and able to seat 70 will serve grilled meats daily, along with a variety of salads and desserts. To the back of Deck 4, you will find a 260 m² panoramic restaurant which can accommodate all of

our passengers in a single sitting. Designed differently to that on our other ships, this dining area, which opens onto the outside, will have a buffet of salads, desserts and cheeses at your disposal. Our discreet and attentive crew will provide table service for hot meals. **PUBLIC AREAS** Like Le Boreal and its sisterships, Le Bougainville has many common areas that are designed and equipped to meet all of your needs while preserving the intimacy of each passenger. A 140 m² reception area includes: A reception/concierge desk, An excursions desk, The ship's administrative services, The sales office, manned by our Guest Relations Officer, Our 50 m² boutique which sells clothing, jewellery, beauty products, postcards and various accessories, Toilets accessible to passengers with reduced mobility. A new hydraulic platform with adjustable height provides: Easier boarding than on any other cruise ship, Easier Zodiac embarkation and disembarkation for expeditions, Easier access to the sea for swimming and practising various water sports such as kayaking or paddle-boarding. A pool deck offering: A pool with a panoramic view, equipped with a counter-current swimming system, A pleasant solarium, An outdoor bar and lounge with armchairs and sofas. A 200 m² main lounge which can accommodate all of our passengers to share convivial moments and to host activities organised during the day or evening. Lastly, a theatre that seats 188, equipped with: The latest sound and lighting technology, A LED wall as the stage backdrop, for the projection of high-resolution images and videos. Please click the following links to read more about Ponant and the other Ponant



The Small Cruise
Ship Collection

www.small-cruise-ships.com

01432 507 280 (within UK)

info@small-cruise-ships.com | small-cruise-ships.com



The Small Cruise Ship Collection

www.small-cruise-ships.com

small-cruise-ships.com info@small-cruise-ships.com



cruise ships.

The Small Cruise Ship Collection

www.small-cruise-ships.com

small-cruise-ships.com

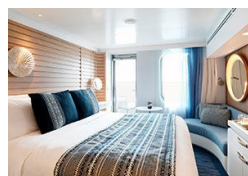
info@small-cruise-ships.com

INSIDE YOUR SHIP

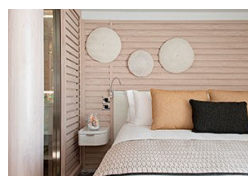


- Owner's Suite Deck 6
- Privilege Suites Deck 5-6
- Grand Deluxe Suites Deck 5-6
- Prestige Suites Deck 5-6
- Deluxe Suites Deck 5-6
- Prestige Cabins Deck 4-5-6
- Deluxe Cabins Deck 3

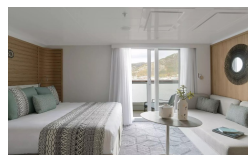
Deluxe Stateroom



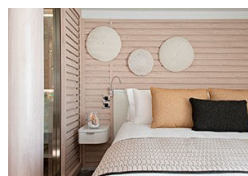
Deluxe Suite



Deluxe Suite Deck 3



Deluxe Suite Deck 4



Deluxe Suite Deck 5

Deluxe Suite Deck 6

Grand Deluxe Suite

Grand Deluxe Suite Deck 5

Grand Deluxe Suite Deck 6

Prestige Deck 4

Prestige Deck 5

Prestige Deck 5 Suite

Prestige Deck 6

Prestige Deck 6 Suite

Prestige Stateroom Deck 4

Prestige Stateroom Deck 5

Prestige Stateroom Deck 6

Prestige Suite Deck 5



The Small Cruise
Ship Collection

www.small-cruise-ships.com

small-cruise-ships.com

info@small-cruise-ships.com

Prestige Suite Deck 6

Privilege Suite

Privilege Suite Deck 5

Privilege Suite Deck 6



The Small Cruise
Ship Collection

www.small-cruise-ships.com

01432 507 280 (within UK)

info@small-cruise-ships.com | small-cruise-ships.com



PRICING

08-Mar-2026 to 19-Mar-2026

Grand Deluxe Suite Deck 6	£16395 GBP pp
Prestige Stateroom Deck 5	£7315 GBP pp
Prestige Stateroom Deck 6	£7695 GBP pp
Privilege Suite	£15490 GBP pp
Deluxe Suite Deck 6	£10530 GBP pp
Prestige Suite Deck 5	£14075 GBP pp
Deluxe Suite Deck 5	£10530 GBP pp
Deluxe Stateroom	£6345 GBP pp
Deluxe Suite Deck 4	£10530 GBP pp
Prestige Suite Deck 6	£14785 GBP pp
Privilege Suite Deck 6	£15490 GBP pp
Grand Deluxe Suite	£16395 GBP pp
Deluxe Suite	£10530 GBP pp
Prestige Stateroom Deck 4	£6985 GBP pp

Prestige Deck 5 Suite	£14090 GBP pp
Prestige Deck 6	£7865 GBP pp
Prestige Deck 4	£7170 GBP pp
Grand Deluxe Suite Deck 6	£16930 GBP pp
Grand Deluxe Suite Deck 5	£16930 GBP pp
Deluxe Stateroom	£6540 GBP pp
Privilege Suite Deck 6	£15480 GBP pp
Prestige Deck 6 Suite	£14790 GBP pp
Deluxe Suite Deck 4	£10630 GBP pp
Deluxe Suite Deck 6	£10630 GBP pp
Deluxe Suite Deck 3	£10630 GBP pp
Privilege Suite Deck 5	£15480 GBP pp
Deluxe Suite Deck 5	£10630 GBP pp
Prestige Deck 5	£7480 GBP pp

17-Dec-2026 to 28-Dec-2026



The Small Cruise
Ship Collection

www.small-cruise-ships.com

small-cruise-ships.com

info@small-cruise-ships.com

PRICING

10-Feb-2027 to 21-Feb-2027

Grand Deluxe Suite Deck 6	£19700 GBP pp
Deluxe Suite Deck 5	£12290 GBP pp
Privilege Suite Deck 6	£17995 GBP pp
Prestige Deck 5 Suite	£16360 GBP pp
Deluxe Suite Deck 4	£12290 GBP pp
Deluxe Suite Deck 3	£12290 GBP pp
Deluxe Stateroom	£7475 GBP pp
Deluxe Suite Deck 6	£12290 GBP pp
Prestige Deck 6 Suite	£17180 GBP pp
Prestige Deck 6	£9035 GBP pp
Prestige Deck 4	£8220 GBP pp
Prestige Deck 5	£8585 GBP pp
Grand Deluxe Suite Deck 5	£19700 GBP pp
Privilege Suite Deck 5	£17995 GBP pp



The Small Cruise
Ship Collection

www.small-cruise-ships.com

01432 507 280 (within UK)

info@small-cruise-ships.com | small-cruise-ships.com