



CRUISE FROM SENEGAL TO MOROCCO

Embark on a captivating luxury cruise from Senegal to Morocco, a journey through Northwest Africa's rich tapestry of cultural influences. Your adventure begins in Dakar, the vibrant capital of Senegal, and takes you through bustling Mauritanian cities before reaching the picturesque landscapes of Morocco, with an exciting trip that concludes in Casablanca. Throughout the voyage, you'll discover a variety of remarkable locations. From the lively Medina of Dakar and Mauritania's cultural hubs of Nouadhibou and Nouakchott to the stunning natural beauty of the Sahara Desert and Agadir's coastal charm, each stop offers unique experiences. Explore the history-laden streets of Safi and the captivating fusion of styles in Casablanca, which promises an unforgettable end to your journey. This luxury cruise offers a wealth of exciting activities. In Dakar, immerse yourself in local culture, while in Nouakchott and Nouadhibou, delve into Mauritania's history and vibrant markets. Enjoy sea days onboard by attending expert-led lectures or honing your photography skills. In Lanzarote's Arrecife, explore volcanic wonders, and in Agadir, discover local culture and stunning vistas. The journey concludes with Casablanca's lively medina and iconic architecture.



ITINERARY

Days 0 - 1 Pre Cruise & Dakar

Fabulous museums, a thriving art scene and elegant seaside dining showcase Dakar's rich culture and forward outlook. The bustling traditional Medina quarter with its mosques, tea shops and street markets contrasts with the Senegalese capital's French-influenced architecture and cuisine. Mbalax music dominates the vibrant nightlife. Traditional crafts like woodcarvings and paintings sell at Soumbédioune market, making it the perfect souvenir stop.



The Small Cruise
Ship Collection

www.small-cruise-ships.com

small-cruise-ships.com

info@small-cruise-ships.com

Day 2 Nouakchott

Nouakchott, Mauritania's capital and largest city, is a key Saharan hub. It offers Fishermen's Beach, known for its colourful boats and sunset views. The city hosts the Presidential Palace and the National Museum of Mauritania, which provides insights into regional history. Notable shopping areas include the Grand Market, Artisan's Village and the Silver Market, known for Mauritanian silver jewellery with distinctive designs.

Day 3 Nouadhibou

Nouadhibou, Mauritania's bustling port city, is a cultural hub known for its diverse population, vibrant markets and a strong economy based on iron ore and fishing. The Port Artisanal is busy with Mauritanian and Senegalese pirogue fishing boats. Nearby, Cap Blanc features pristine sands and a colony of monk seals, while the UNESCO-listed Banc d'Arguin National Park, renowned for its nesting birds and migratory waders, is also close by.

Day 4 Day at sea

Sea days are rarely dull. Take the time to sit back and let the world go by. The ship's observation decks provide stunning views of the passing ocean. A day at sea gives you the opportunity to mingle with other passengers and share your experiences of this incredible trip or head to our library which is stocked full of reference books. Get an expert's view in one of our on-board lectures or perhaps perfect your photography skills with invaluable advice from our onboard professional photographers.

Day 5 Arrecife, Lanzarote Island

Arrecife, Lanzarote's capital, is a bustling city with lively attractions. Charco San Gines, a natural seawater lagoon, lies in an area filled with old houses and charming fishing boats, as does the 16th-century stone fortress, Castillo de San Gabriel, now serving as a museum. Timanfaya National Park is a surreal expanse of volcanic landscapes. Deep within the heart of this volcanic wonderland lies the Montañas del Fuego, or "Fire Mountains."

Day 6 Agadir

Agadir's beach is alive with sea-facing cafes, overlooked by the 16th-century Saadian Kasbah which graces Agadir Ou-fellah hill. The sprawling El Had Souk has 6,000 glittering stores, while the reconstructed medina, reborn after an earthquake, offers a glimpse of the city's historical charm. Other highlights include the grand Mohamed V Mosque, one of Morocco's most impressive, and the Ethnographic Museum delving into local Berber culture.

Day 7 Safi

Safi, a port city on Morocco's Atlantic coast, is renowned for its sardine industry. Also known as the "Pottery Capital of Morocco," the city's pottery, made in workshops in the Colline des Potiers, is showcased at the National Museum of Ceramics in the Kechla Citadel. Colonised by the Portuguese, the old town features food and craft stalls along Rue du Souq, and the 16th-century Ksar El Bahr fortress highlights Safi's Portuguese heritage.



The Small Cruise
Ship Collection

www.small-cruise-ships.com

01432 507 280 (within UK)

info@small-cruise-ships.com | small-cruise-ships.com



The Small Cruise Ship Collection

www.small-cruise-ships.com

small-cruise-ships.com

info@small-cruise-ships.com

Day 8 Casablanca

Casablanca, Morocco's largest city, showcases a fusion of French, Moorish, and Art Deco styles in its downtown neo-Mauresque structures. The prominent Hassan II Mosque, finished in 1993, features a towering 210m minaret with laser projections, and the 18th-century medina's lively alleyways provide a glimpse into the city's historical charm. Place Mohammed V, with palm trees and an elaborate fountain, symbolises Casablanca's dynamism.

Please note:

Itineraries are subject to change.



The Small Cruise Ship Collection

www.small-cruise-ships.com

small-cruise-ships.com

info@small-cruise-ships.com

YOUR SHIP: DIANA

YOUR SHIP: Diana

VESSEL TYPE:

LENGTH:

PASSENGER CAPACITY:

BUILT/REFURBISHED:

Launched in 2023, SH Diana provides elegant and spacious 5-star accommodation for 192 guests in 96 spacious staterooms and suites, the vast majority with large balconies. Operated by an onboard team of 140 she provides a high level of personal service, exploring the Mediterranean and its famous sites of antiquity. Now sit back, relax and take a moment to get to know this amazing new ship, purpose-designed for our unique cultural expedition cruises. Named after the Ancient Roman goddess of light, the moon, hunting and the wilderness, SH Diana has been specially designed for worldwide cruising to explore the most inspiring and inaccessible places on earth. Building on the outstanding amenities of her sister ships, she adds a dedicated Multifunctional Room next to the Observation Lounge, a Private Dining Room for special occasions, and two tenders which bring guests a comfortable alternative to Zodiacs for expedition landings. A Polar Class 6 ice-strengthened hull combines with extra-large stabilisers to make your journey as comfortable as possible. SH Diana has been designed for immersive experiences, with extensive outside deck areas, multiple observation points and bright, open and relaxing public spaces with unobstructed views. The pleasure and safety of our

guests is paramount at all times, cared for by our attentive crew and seasoned expedition leaders. Cutting edge hygiene technology protects the health of all on board to the highest standards and includes air conditioning with UV sanitisation systems. SH Diana's 96 staterooms, including 11 suites, are each a superbly comfortable home from home and all feature panoramic sea views, a flame-effect fireplace, original works of art, plush couches, premium pocket sprung mattresses, en-suite bathrooms with glass-enclosed rain showers, and Egyptian cotton towels, bathrobes and sheets. A pillow menu offers customised head and neck comfort during rest, while a large flat screen TV, espresso machine with Illy premium coffee, tea making facilities with the finest Kusmi teas, and a minibar with refreshments enhance relaxation at any time. In-room dining is of course available at all hours. Wheelchair access Guests who use wheelchairs must bring their own, as we have only a small number of wheelchairs stored onboard for emergencies. To ensure ease of movement on the ship, wheelchairs and mobility aids must be no wider than 65cm. All mobility or medical equipment brought on board must be capable of being carried safely and must be declared before sailing. To ensure that all guests can safely evacuate during an emergency, guests requiring a wheelchair can only be accommodated in our ADA-accessible cabins. We offer an Oceanview and a Balcony stateroom on Diana. These staterooms are specifically designed to be completely ADA compliant and have a fully operable wheelchair-access wet unit. Diana has two lifts, serving every passenger deck apart from the Stargazing top deck, which is, therefore, more difficult to access, as are the Aft Marina and

The Small Cruise Ship Collection
www.small-cruise-ships.com

01432 507 280 (within UK)

info@small-cruise-ships.com | small-cruise-ships.com

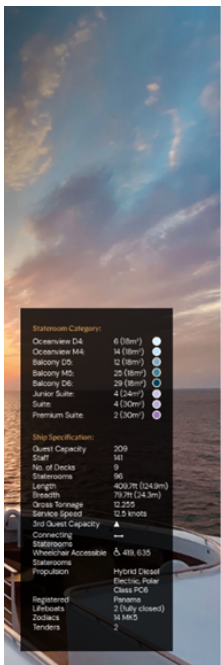


Swan's Nest forward observation platform. Also, we don't have special equipment to access the swimming pool, jacuzzi, or sauna. Otherwise, the ship is entirely at your disposal. Many of the expeditions ashore in remote places are by Zodiac. Boarding these boats and returning aboard can present challenges for wheelchair users, as can navigating uneven terrain. These challenges are by no means always insurmountable, though, and our highly experienced crew is trained to provide reliable advice and assistance. They will make every effort to ensure wheelchair-using guests enjoy a memorable experience at each destination. Our general guidance, however, is to recommend wheelchair users travel with a companion for their ease and enjoyment. If you prefer to remain aboard, our panoramic interiors and ample open decks ensure an immersive, intimate experience of your inspiring



surroundings.

INSIDE YOUR SHIP

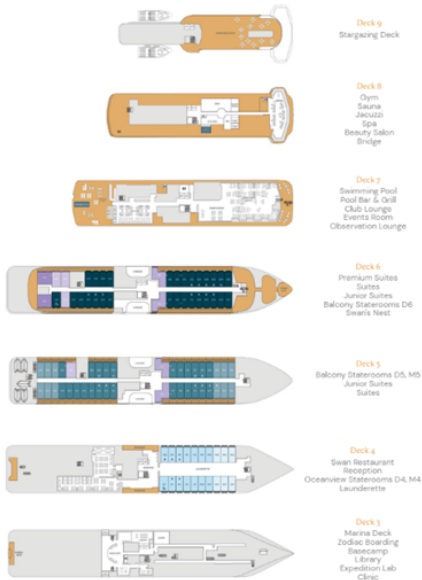


Stateroom Category:

- Oceanview D4: 6 (8m²)
- Oceanview M4: 14 (8m²)
- Balcony D5: 12 (8m²)
- Balcony M5: 25 (8m²)
- Balcony D6: 24 (8m²)
- Junior Suite: 4 (24m²)
- Suite: 4 (30m²)
- Premium Suite: 2 (30m²)

Ship Specifications:

- Guest Capacity: 209
- Crew: 101
- No. of Decks: 9
- Staterooms: 98
- Length: 400.7m (1243ft)
- Breadth: 39.1m (124ft)
- Gross Tonnage: 12,205
- Service Speed: 12.5 knots
- 1st Guest Capacity: 100
- Connecting Staterooms: 1
- Wheelchair Accessible: 635
- Staterooms: 98
- Propulsion: Hybrid Diesel
- Electric Power: 10,000 kW
- Passengers: 2 (fully closed)
- Cabinets: 14 M/S
- Tenders: 2



Balcony D5



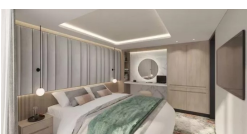
Balcony D6



Balcony M5



Junior Suite



Oceanview D4



Oceanview M4



Premium Suite

Suite



The Small Cruise
Ship Collection

www.small-cruise-ships.com

small-cruise-ships.com

info@small-cruise-ships.com

PRICING

30-Apr-2026 to 08-May-2026

Oceanview M4	£4690 GBP pp
Balcony D5	£5340 GBP pp
Premium Suite	£8940 GBP pp
Oceanview D4	£4490 GBP pp
Suite	£7790 GBP pp
Junior Suite	£6690 GBP pp
Balcony D6	£5790 GBP pp
Balcony M5	£5590 GBP pp



The Small Cruise
Ship Collection

www.small-cruise-ships.com

01432 507 280 (within UK)

info@small-cruise-ships.com | small-cruise-ships.com