



The Small Cruise Ship Collection

www.small-cruise-ships.com

small-cruise-ships.com

info@small-cruise-ships.com

CROATIA BIKE CRUISE

This guided cycling tour in Dalmatia starts and ends in Split exploring amazing coastlines, medieval towns, old villages and picturesque bays. Highlights include great beaches, vineyards, pine woods, cycling across the historic islands and exploring Mljet National Park. Croatia is a land of stunning islands, rich history, Mediterranean vegetation and a mild climate. Without doubt, the best way to explore it is by bike.

Day 1 SPLIT - ROGA - MILNA

Bike Course: **Roga - Maslinica - Roga ** | Length: 20 km |
Highest point: 280 m | Difficulty level: 1/5

Arrival in Split and check-in from 11:00. Departure at 13:00 followed by lunch on board on the journey to the island of Šolta. Upon arrival in Roga cycle through charming landscapes on your way to the coastal town of Maslinica. After taking in the sights, cycle back to Roga, where the ship awaits you to continue your adventure. Depending on port conditions, an alternative cycling route on Šolta Island may be considered: Stomorska - Gornje Selo - Maslinica - Stomorska. Departure to Milna on Brač Island. Overnight in Milna.

Day 2 MILNA - STARI GRAD - HVAR - VELA LUKA

Bike Course: **Stari Grad - Jelsa - Hvar** | Length: 45 km |
Highest point: 790m | Difficulty level: 3/5

Set sail from Milna to Stari Grad on the island of Hvar. From Stari Grad, start the cycling adventure: pedal through the stunning landscapes of the magnificent island of Hvar. Pass through numerous lavender fields and enjoy the view towards neighbouring islands and the mainland. Take a short sightseeing trip to Hvar, a fairy tale city of great architecture, beautiful nature, and a mild climate. Lunch on board and departure. Overnight in Vela Luka.

ITINERARY



The Small Cruise Ship Collection

www.small-cruise-ships.com

small-cruise-ships.com

info@small-cruise-ships.com

Day 3 VELA LUKA - KOR ULA

Bike Course: ****Vela Luka - Kor ula**** | Length: 55km | Highest point: 850m | Difficulty level: 3/5

Begin your day in Vela Luka and embark on a scenic bike ride across the island of Kor ula. Cycle through lush vineyards, olive groves, and charming villages, making your way to the historic town of Kor ula. Explore the medieval architecture, vibrant local culture, and beautiful waterfront of Kor ula town. After a fulfilling day of cycling and sightseeing, enjoy an overnight stay in this enchanting destination.

Day 4 KOR ULA - MIJET

Bike Course: ****National Park Mljet**** | Length: 18km | Highest point: 160m | Difficulty level: 1/5

Cruise during breakfast from Kor ula to Mljet island, the lush green island also known as "honey island". Mljet National Park (obligatory entrance fee for all guests on board) is a beautiful area of unique charm featuring two connected saltwater lakes, lush flora, a unique appearance of indented coastline, cliffs and numerous islets as well as always green plants of the surrounding hills. Cycle around the saltwater lake, inside which there is another island with the Benedictine monastery from the 12th century. Refresh in saltwater lakes and return to lunch on board. Free afternoon to explore the park on your own. Captain's Dinner on Board (included in the Premium Superior and Premium category). Overnight in Pomena or Pola a.

Day 5 MIJET - TRSTENIK - KU IŠTE

Bike Course: ****Trstenik - Orebi**** | Length: 32km | Highest point: 500m | Difficulty level: 3/5

Today's ride could be called the panoramic wine route. After breakfast, start riding from Trstenik through the picturesque vineyards of the south side of Pelješac. Cross the tunnel Dinga and continue to the renowned vineyard area, famous for the best varieties of Croatian wine. Descend towards Orebi, the city of seafarers and captains, enjoying unique viewpoints of the Kor ula archipelago along the way. Conclude your day with a few kilometres of ascending and then descending to reach your destination. Overnight in Ku ište.

Day 6 KU IŠTE - SU URAJ - PU IŠ A

Bike Course 1: ****Su uraj - Pokrivenik**** | Length: 32km | Highest point: 470m | Difficulty level: 2/5

Breakfast and morning cruise towards the longest Croatian island Hvar with a view of Biokovo mountain. Disembark on the eastern tip of Hvar Island where the cycling tour begins. A ride through picturesque landscapes and coastal views. Ascend to the highest point of the route before descending to the tranquil bay of Pokrivenik where the ship will be waiting. Enjoy lunch on board as you cruise towards Pu iš a, on Bra Island - the most beautiful smallest settlement in Europe. Overnight in Pu iš a.

Day 7 PU IŠ A - POSTIRA - SPLIT

The Small Cruise Ship Collection
www.small-cruise-ships.com

01432 507 280 (within UK)

info@small-cruise-ships.com | small-cruise-ships.com



Bike Course: **Pu i š a - Postira - Supetar ** | Length: 25km |
Highest point: 360m | Difficulty level: 2/5

Embark on a picturesque cycling journey from Pu i š a, starting with a scenic ride to Postira. Pedal through charming villages and coastal paths, enjoying the serene beauty of Bra Island. Continue the cycling adventure to Supetar, the island's largest town, known for its beautiful beaches and historic architecture. After exploring Supetar, return for lunch on board and a relaxing journey back to Split, where you can reflect on the day's adventures and enjoy the coastal views along the way. Overnight in Split.

Day 8 - Split

Disembarkation in Split. Breakfast followed by check out at 9:00 am.

The Small Cruise Ship Collection

www.small-cruise-ships.com

small-cruise-ships.com

info@small-cruise-ships.com

YOUR SHIP: CROATIAN 'COMFORT CLASS' CRUISER

YOUR SHIP: Croatian 'comfort class' cruiser

VESSEL TYPE:

LENGTH:

PASSENGER CAPACITY:

BUILT/REFURBISHED:

These 'comfort' cruises are run on a small variety of vessels, all of very similar standard, but the actual vessel isn't usually confirmed until 2 weeks before the cruise. All of the vessels are very comfortable, and the cabins have airconditioning and en-suite bathrooms. All the vessels carry around 40 passengers (maximum). Steel hulled vessels with modern traditional look offer accommodation in air-conditioned, spacious en-suite cabins with double or twin beds, hair dryer and safety deposit box. Ships are from 29 to 35m in length with cabins 8 to 14m² in size. Included services: buffet breakfasts, three course lunches, Captain's dinner, English speaking tour manager on board, one guided tour, daily cabin service, mid-week fresh set of towels and bed linen, luggage handling. The images here are examples of these vessels, and their cabins and decks. Most vessels have a few triple cabins. These either have a double bed and a single bed, or sometimes a double and a single bunk.



The Small Cruise Ship Collection

www.small-cruise-ships.com

small-cruise-ships.com

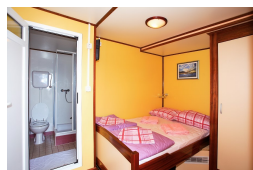
info@small-cruise-ships.com

INSIDE YOUR SHIP

Below deck cabins



Main deck cabins



Lower Deck Cabin



The Small Cruise Ship Collection

www.small-cruise-ships.com



small-cruise-ships.com

info@small-cruise-ships.com

PRICING

27-Sep-2025 to 04-Oct-2025

| | |
|-------------------|--------------|
| Below deck cabins | £935 GBP pp |
| Main deck cabins | £1062 GBP pp |

27-Sep-2025 to 04-Oct-2025

| | |
|------------------|--------------|
| Lower Deck Cabin | £1065 GBP pp |
| Main deck cabins | £1275 GBP pp |

04-Oct-2025 to 11-Oct-2025

| | |
|-------------------|-------------|
| Below deck cabins | £765 GBP pp |
| Main deck cabins | £892 GBP pp |

11-Oct-2025 to 18-Oct-2025

| | |
|-------------------|-------------|
| Below deck cabins | £765 GBP pp |
| Main deck cabins | £892 GBP pp |

11-Oct-2025 to 18-Oct-2025

| | |
|------------------|--------------|
| Lower Deck Cabin | £895 GBP pp |
| Main deck cabins | £1025 GBP pp |

ADDITIONAL CHARGES:

Port taxes 60 EUR pp



The Small Cruise Ship Collection

www.small-cruise-ships.com

01432 507 280 (within UK)

info@small-cruise-ships.com | small-cruise-ships.com