



The Small Cruise  
Ship Collection

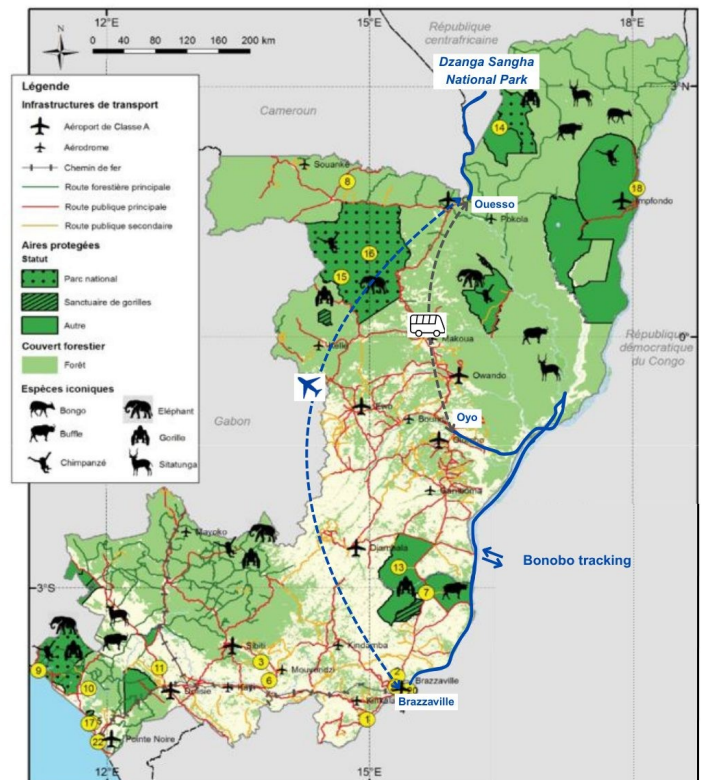
www.small-cruise-ships.com

small-cruise-ships.com

info@small-cruise-ships.com

## CONGO RIVER CRUISE AND DZANGA NATIONAL PARK - 15 NIGHTS

The Congo Basin is the second largest forest massif in the world. It abounds in exceptional flora and fauna. Little known to the public, this region deserves more recognition. It's a gigantic territory of forests and rivers, sparsely populated. We invite you to enter the heart of Central Africa on the Congo and Sangha rivers. Our cruises allow you to discover the indigenous peoples and the sublime biodiversity of their environment. NB. This journey visits the Democratic Republic of Congo (DRC) and the Central African Republic (CAR). Some governments advise against travel to DRC and/or CAR and most standard insurance policies won't cover you for visits to one or both of these. You may need to purchase specialist travel insurance that does cover you for travel to these countries.



### ITINERARY

Day - 1 Arrival in Brazzaville.

Arrival in Brazzaville. Our guide will meet you at the airport if you are arriving on Day 1. Boarding begins at 5pm on the Princesse Ngalessa ship. Passengers arriving in the morning can be

The Small Cruise  
Ship Collection

www.small-cruise-ships.com

01432 507 280 (within UK)

info@small-cruise-ships.com | small-cruise-ships.com



## The Small Cruise Ship Collection

[www.small-cruise-ships.com](http://www.small-cruise-ships.com)

[small-cruise-ships.com](http://small-cruise-ships.com)

[info@small-cruise-ships.com](mailto:info@small-cruise-ships.com)

dropped off in the lobby of the Radisson Hotel to relax while waiting for boarding.

Night on board Princess Ngalessa

### Day 2 - Beginning of the cruise on the Congo

After breakfast, we start our ascent of the Congo River. We sail through a landscape of green hills as we familiarise ourselves with the boat and the program and get to know our guides. In the afternoon, we go on a short boat excursion on the beautiful green waters of the Maipili River.

From the observation deck, we watch the fascinating boats, whaleboats and long flat-bottomed transport barges that are pushed along the Congo River. Travelling for weeks at a time and measuring up to two hundred metres in length, these floating villages transport goods, people and livestock from town to town. They play a crucial role in the economy and life of the Congo River communities.

Night on board Princess Ngalessa

### Day 3 - The Téké Kingdom and Kébé Kébé dance

In the morning, we visit Ngabe, one of the ancient capitals of the Teke kingdom. We ascend through the village to visit the current queen. As the guardian of "Nkwembali," the spiritual deity of the Bateke, she is the person authorised to transfer power to the new king, the Makoko. She holds significant influence in the Teke kingdom, one of the powerful kingdoms in the country. We witness a kebe kebe ritual, a dance and an initiatory society from Congo. The ordinary form of the kebe-kebe resembles whirling dervishes, wrapped in raffia robes adorned with feathers from various birds, and manipulating a puppet that generally

represents a painted Koyo head showing the specific scarifications of the ethnic group.

Night on board Princess Ngalessa

### Day 4 Crossing the Congo and journey to the Bonobo Camp

Bonobos are an endemic and rare species of chimpanzee from the DRC. They are the animal genetically closest to humans, with genotypes that are 98.7% similar. Three groups of bonobos can be observed around the village of Nkala. This is the only place in the world where it is possible to observe semi-habituated bonobos. In the afternoon, we leave the boat and drive for two hours through a hilly landscape to reach the bonobo camp. We learn about the project developed by local communities around bonobo conservation.

Night in a tented camp.

### Day 5 Tracking bonobos

Upon waking, we head into the forest early to position ourselves under the bonobo nests. As the bonobos wake up, we observe the bonobos stretching and starting their day. We then follow them to continue our observation. We return to the Princess Ngalessa in the late morning.

Night on board Princess Ngalessa

### Day 6 - The city of Mossaka, famous for salted fish, and the village of Likendze

In the morning we set out to explore the city of Mossaka. We discover the remnants of the colonial era, we visit the bustling local market where we'll immerse ourselves in the daily life of the local people. Our visit takes us through the alleys where salted fish dryers are

The Small Cruise Ship Collection  
[www.small-cruise-ships.com](http://www.small-cruise-ships.com)

01432 507 280 (within UK)

[info@small-cruise-ships.com](mailto:info@small-cruise-ships.com) | [small-cruise-ships.com](http://small-cruise-ships.com)



## The Small Cruise Ship Collection

[www.small-cruise-ships.com](http://www.small-cruise-ships.com)

[small-cruise-ships.com](http://small-cruise-ships.com)

[info@small-cruise-ships.com](mailto:info@small-cruise-ships.com)

installed. This traditional technique of preserving fish has made Mossaka famous throughout the region. We also discover the production of palm wine and meet a potter.

We return to the ship for lunch and continue our navigation to Likendze. At the village of Likendze on the Sangha River, we learn different fishing techniques such as cast net fishing, trap fishing, and net fishing. Those interested can even try their hand at line fishing. At

the late afternoon, we will go for a birding in search of the emblematic birds of the region such as ospreys, palm-nut vultures, African fish eagles, hamerkops, cormorans, kingfishers, weavers, ibis, grey herons, storks, egrets, hornbills, pied crows, Brazza's Martin and the elusive turaco.

Night on board Princess Ngalessa

### Day 7 - Alima River and the Moyo people

In the morning, we leave on launch boats to observe the hippos who live a few kilometres north of the village. Back on the ship, we navigate towards the Alima River. This beautiful narrow winding river is surrounded by swamp forests. We finish the day in the village of Bonda where we meet the Moyo People. They are our guides to discover the flooded forest.

Following the season, we discover the forest by canoe or on foot. In the evening, the Moyo people perform a traditional dance on the bank of the river. At night, we will navigate in a 900 m loop to listen to the forest and perhaps, spot the shining eyes of the crocodiles.

Night on board Princess Ngalessa

### Day 8 - Traditional Medicine

We navigate on the Alima River. Passing the many bends of the river, along the banks we can see many charming raffia villages. Later on, we reach the village of Mondongo. This village, also made primarily using raffia, is home to Moyo People. We met a local guide who explains the traditional pharmacopoeia and the preparation of remedies. The swamp forest is teeming with plants the villagers use for traditional medicine to treat diseases and injuries.

In the afternoon, accompanied by our knowledgeable guides, we will walk through the forest, learning about the different emblematic trees, plants, and the secret life of the forest - from the intricate world of insects to the fascinating interplay of flora and fauna that thrives within its lush canopy.

Night on board Princess Ngalessa

### Day 9 - Transfer to Ouessou, capital of the Sangha

After lunch, we disembark for our bus trip to Ouessou through the bush and the tropical forest (6 hours drive). We drive on the east border of the Odzala Kokoua National Park.

Night at a local hotel.

### Days 10 -15 Immersion in the Tri-National of the Sangha

Situated in the north-western Congo Basin, where Cameroon, Central African Republic and Congo meet, the site encompasses three contiguous national parks totaling around 750,000 ha. Much of the site is unaffected by human activity and features a wide range of humid tropical forest ecosystems with rich flora and fauna, including Nile crocodiles and goliath tigerfish, a large predator. Forest clearings support herbaceous species and Sangha is

The Small Cruise Ship Collection

[www.small-cruise-ships.com](http://www.small-cruise-ships.com)

01432 507 280 (within UK)

[info@small-cruise-ships.com](mailto:info@small-cruise-ships.com) | [small-cruise-ships.com](http://small-cruise-ships.com)



## The Small Cruise Ship Collection

[www.small-cruise-ships.com](http://www.small-cruise-ships.com)

[small-cruise-ships.com](http://small-cruise-ships.com)

[info@small-cruise-ships.com](mailto:info@small-cruise-ships.com)

home to considerable populations of forest elephants, critically endangered western lowland gorilla, and endangered chimpanzee.

### Day 10 - Tri National Park of the Sangha

We sail up the upper Sangha River towards Bayanga in the Central African Republic on launch boats for a comfortable 7.5 hours journey surrounded by pristine forest. Along the way we can see local villages and settlements. Based on the season we observe the many birds or if we're lucky some monkeys of the region. We arrive in the afternoon at our lodge for a nice sundowner overlooking the Sangha.

Night at Doli or Sangha Lodge in Dzanga Sangha National Park

### Day 11 Lowland Gorilla Tracking

We leave the lodge in the morning for a 45min drive to the gorilla base camp where we start our tracking. On the trail, we can see many other animals. Accompanied by Baaka trackers, we follow the signs of the groups passing through. Arrived near them, we observe them about ten meters away, and they observe us. The young bicker, the females feed, others rest. The silverback is watching. The largest measure up to 1.70 meters. So as not to disturb them, after an hour we will leave, with images in our heads.

Night at Doli or Sangha Lodge in Dzanga Sangha National Park

### Day 12 - The Elephant Village

Early in the morning we will visit the famous Dzangha Bai. Known as the Elephant Village, up to 150 elephants can be spotted in a day. Sitting high up in the trees we will have a chance to spot many animals including buffalos, bongos,

sitatunga, cephalophus etc. We take the time to observe the animals from the platform before return to our lodge.

Night at Doli or Sangha Lodge in Dzanga Sangha National Park

### Day 13 - The Hokous Salt Flats and its wild animals

Departure in the morning for the seven bays called Hokous bays. During these walks we have the chance to see a variety of animals including elephants, gorillas, cephalophores, forest hogs and many birds. During our walk, our BaAka trackers will find the groups Agile Mangabeys followed by the scientists. These silver-grey monkeys exhibit remarkable gracefulness as they navigate the forest canopy with ease, using their long limbs and prehensile tails. Agile Mangabeys are highly social creatures, often engaging in playful behaviours such as chasing each other, leaping through the trees, and engaging in mock battles. They communicate through a diverse range of vocalisations, including chirps, squeals, and grunts, which play a crucial role in maintaining social bonds and coordinating group activities.

Night at Doli or Sangha Lodge in Dzanga Sangha National Park

### Day 14 - A day with the Pygmies BaAka.

In the morning, we set out for an immersion into the world of the BaAka to discover the traditions of these emblematic people of the forest. Depending on the season, you may participate in a traditional net hunt, discover plants used in traditional medicine, collect honey, or engage in basket fishing. All this in the ever-joyous atmosphere of the forest peoples. Lunch at the Lodge. In the afternoon, we will experience the fascinating water drumming by the BaAka. Striking the water with their palms, the music resonates like a drum from another time. We stroll

The Small Cruise Ship Collection

[www.small-cruise-ships.com](http://www.small-cruise-ships.com)

01432 507 280 (within UK)

[info@small-cruise-ships.com](mailto:info@small-cruise-ships.com) | [small-cruise-ships.com](http://small-cruise-ships.com)



through Bayanga.

Night at Doli or Sangha Lodge in Dzanga Sangha National Park

Day 15 - Return to Ouessou

After spending the last four days in some of the least visited places on Earth, we return to Ouessou on our launch boat (7 hours). The chance to enjoy one last time the pristine forest before seeing it from above the next day.

Night at the local hotel

Day 16 - Return to Brazzaville and fly over the evergreen tropical forest.

Transfer to the airport and then fly to Brazzaville. Through the portholes, we see the huge forest canopy. Such a view of one of the largest forests in the world will stay in our memory forever.

After lunch, we start with a meeting with "La Sape" \- Society of Ambiance-Makers and Elegant People. We then set out to explore the city, The Congo Basin Museum, the Poto Poto School, the Cathedral.

Please note:

Itineraries are subject to change.



## The Small Cruise Ship Collection

[www.small-cruise-ships.com](http://www.small-cruise-ships.com)

[small-cruise-ships.com](http://small-cruise-ships.com)

[info@small-cruise-ships.com](mailto:info@small-cruise-ships.com)

## YOUR SHIP: PRINCESS NGALESSA

**YOUR SHIP:** Princess Ngalessa

**VESSEL TYPE:**

**LENGTH:**

**PASSENGER CAPACITY:**

**BUILT/REFURBISHED:**

The ship was built in a Belgian run shipyard in Kinshasa in 2017. It takes the form of the passenger ships that have for decades transported passengers on the Congo River and its tributaries between the different capitals of Central Africa. With a robust steel construction, she is powered by two new-generation 380 HP Caterpillar engines, thus reducing noise pollution and fuel consumption. Its draft of 90 centimeters allows it to navigate easily on shallow rivers. In 2022/2023, she was refitted to launch the first 4 safari cruises in the heart of one of the most mysterious forests in the world, the Congo Basin forest. Its renovation into a comfortable 4-star Boutique Hotel Ship launches a new era for the development of sustainable tourism in the Republic of Congo (Congo Brazzaville). In June 2023 she began the first cruises on the Congo and Sangha rivers, thus reviving the long tradition of river navigation in the Congo. ON BOARD LIVING AND SOCIAL AREAS :600 m<sup>2</sup> of common areas Dining room Indoor bar and lounge Outdoor lounge Outdoor jacuzzi Massage Room Observation Deck WORLD CLASS DINING PROGRAM A culinary experience nourished by African and European influences A menu specially prepared by a French Chef rewarded for his work with a Michelin

star in 2021 Local products and fine wine. LAUNCH BOATS FOR SHORE EXCURSIONS Two auxiliary aluminum launch boats equipped with four-stroke low emission engines. Each boat has a capacity of 15 passengers. Kayaks for two people Accommodation Passengers are accommodated in 14 Design cabins across three decks. Owner 's Suite 35 m<sup>2</sup>. Observation deck. Private balcony (9m<sup>2</sup>) : Three windows, armchair, writing desk and chair, two bedside tables, sofa, and a closet. Bathroom. Air-conditioning. 1 cabin with two single beds that can convert to a queen. 1 cabin with one queen bed. (401, 402) Forward Superior Suite 30 m<sup>2</sup>. Third Deck Forward. Public balcony. Four windows, two bedside tables, and a closet. Bathroom. Air-conditioning. 2 cabins with two single beds that can convert to a king. (301, 302) Superior Suite 30 m<sup>2</sup>. Third Deck Public balcony. Four windows, two bedside tables, and a closet. Bathroom. Air-conditioning. 2 cabins with two single beds that can convert to a king. (303, 304) Forward Master Suite 23 m<sup>2</sup>. Second Deck Forward. Public balcony : Four windows, armchair, writing desk and chair, two bedside tables, and a closet. Bathroom. Air-conditioning. 2 cabins with queen beds. (201, 202) Master Suite 27 m<sup>2</sup>. Second Deck. Public balcony : Three windows, armchair, writing desk and chair, two bedside tables, sofa, and a closet. Bathroom. Air-conditioning. 1 cabin with two single beds that can convert to a queen. 1 cabin with one queen bed. (203, 204) Deluxe Suite 18 m<sup>2</sup>. Second Deck. Public balcony : Two windows, armchair, writing desk and chair, two bedside tables, and a closet. Bathroom. Air-conditioning. 2 cabins with two single beds that can convert to a queen. 4 cabins with queen beds. (205, 206, 207, 208,

The Small Cruise Ship Collection  
[www.small-cruise-ships.com](http://www.small-cruise-ships.com)

01432 507 280 (within UK)

[info@small-cruise-ships.com](mailto:info@small-cruise-ships.com) | [small-cruise-ships.com](http://small-cruise-ships.com)



# The Small Cruise Ship Collection

[www.small-cruise-ships.com](http://www.small-cruise-ships.com)

[small-cruise-ships.com](http://small-cruise-ships.com)

[info@small-cruise-ships.com](mailto:info@small-cruise-ships.com)

209, 210) Classic Cabin 12 m<sup>2</sup>. First Deck. Public balcony :  
One window, armchair and a closet. Bathroom. Air-conditioning.  
2 cabins with two single beds



(101, 102)



The Small Cruise Ship Collection

[www.small-cruise-ships.com](http://www.small-cruise-ships.com)

**01432 507 280** (within UK)

[info@small-cruise-ships.com](mailto:info@small-cruise-ships.com) | [small-cruise-ships.com](http://small-cruise-ships.com)



The Small Cruise Ship Collection

www.small-cruise-ships.com

small-cruise-ships.com

info@small-cruise-ships.com

## INSIDE YOUR SHIP

Observation Deck



Third Deck / Restaurant Deck



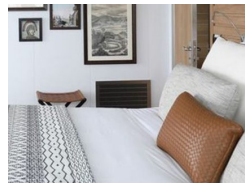
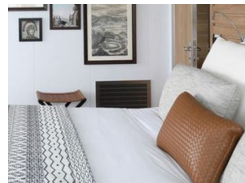
Second Deck



First Deck



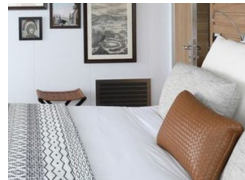
Deluxe Suite



Forward Master Suite

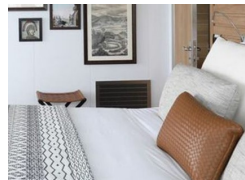
Forward Superior Suite

Master Suite



Owner's Suite

Superior Suite



# The Small Cruise Ship Collection

www.small-cruise-ships.com

small-cruise-ships.com

info@small-cruise-ships.com

## PRICING

### 19-Jun-2026 to 04-Jul-2026

Deluxe Suite	£8289 GBP pp
Master Suite	£9225 GBP pp
Forward Master Suite	£9225 GBP pp
Superior Suite	£9855 GBP pp
Forward Superior Suite	£10289 GBP pp
Owner's Suite	£10945 GBP pp

### 18-Nov-2026 to 03-Dec-2026

Deluxe Suite	£8287 GBP pp
Forward Master Suite	£9222 GBP pp
Master Suite	£9222 GBP pp
Superior Suite	£9855 GBP pp
Forward Superior Suite	£10288 GBP pp
Owner's Suite	£10940 GBP pp

### 05-Dec-2026 to 20-Dec-2026

Deluxe Suite	£8287 GBP pp
Forward Master Suite	£9222 GBP pp
Master Suite	£9222 GBP pp
Forward Superior Suite	£10288 GBP pp
Owner's Suite	£10940 GBP pp

### 19-Dec-2026 to 03-Jan-2027

Deluxe Suite	£8287 GBP pp
Forward Master Suite	£9222 GBP pp
Master Suite	£9222 GBP pp
Forward Superior Suite	£10288 GBP pp
Owner's Suite	£10940 GBP pp

### 19-Aug-2027 to 03-Sep-2027

Deluxe Suite	£8659 GBP pp
Forward Master Suite	£9595 GBP pp
Master Suite	£9595 GBP pp
Superior Suite	£10375 GBP pp
Forward Superior Suite	£10789 GBP pp
Owner's Suite	£11529 GBP pp

### 11-Sep-2027 to 26-Sep-2027

Deluxe Suite	£8659 GBP pp
Forward Master Suite	£9595 GBP pp
Master Suite	£9595 GBP pp
Superior Suite	£10375 GBP pp
Forward Superior Suite	£10789 GBP pp
Owner's Suite	£11529 GBP pp



# The Small Cruise Ship Collection

[www.small-cruise-ships.com](http://www.small-cruise-ships.com)

[small-cruise-ships.com](http://small-cruise-ships.com)

[info@small-cruise-ships.com](mailto:info@small-cruise-ships.com)

## PRICING

### 12-Sep-2027 to 27-Sep-2027

Deluxe Suite	£8659 GBP pp
Master Suite	£9595 GBP pp
Forward Master Suite	£9595 GBP pp
Forward Superior Suite	£10789 GBP pp
Owner's Suite	£11529 GBP pp

Deluxe Suite	£8659 GBP pp
Forward Master Suite	£9595 GBP pp
Master Suite	£9595 GBP pp
Forward Superior Suite	£10789 GBP pp
Owner's Suite	£11529 GBP pp

### 14-Nov-2027 to 29-Nov-2027

Deluxe Suite	£8659 GBP pp
Forward Master Suite	£9595 GBP pp
Master Suite	£9595 GBP pp
Superior Suite	£10375 GBP pp
Forward Superior Suite	£10789 GBP pp
Owner's Suite	£11529 GBP pp

### 05-Dec-2027 to 20-Dec-2027

Deluxe Suite	£8659 GBP pp
Master Suite	£9595 GBP pp
Forward Master Suite	£9595 GBP pp
Forward Superior Suite	£10789 GBP pp
Owner's Suite	£11529 GBP pp

### 27-Dec-2027 to 11-Jan-2028