

The Small Cruise Ship Collection

www.small-cruise-ships.com

small-cruise-ships.com

info@small-cruise-ships.com

COLOURFUL START TO THE YEAR ON DISTANT SHORES - SRI LANKA & SOUTHEAST ASIA CRUISE

Golden shimmering beaches invite you to relax, Sri Lanka's unspoilt nature extends to the coast and mysterious temples exude their magic: mesmerised by the turquoise-blue ocean, January becomes a feast for all the senses.



ITINERARY

Day 1 Colombo/Sri Lanka, departure 24.00 hrs

Day 2 Galle/Sri Lanka, 08.00 - 18.00 hrs

On the south coast of Sri Lanka is a town full of life, history and cultural diversity. Galle, once an important natural harbour, still attracts visitors who come to experience the town's unique charm. Winding streets, colourful markets and colonial buildings create a very special atmosphere, in which Asian and European influences come harmoniously together. The imposing fort, built

The Small Cruise Ship Collection

www.small-cruise-ships.com

01432 507 280 (within UK)

info@small-cruise-ships.com | small-cruise-ships.com



The Small Cruise Ship Collection

www.small-cruise-ships.com

small-cruise-ships.com

info@small-cruise-ships.com

by the Dutch in the 17th century and now a UNESCO World Heritage Site, offers wonderful views out to sea. Galle has also introduced some green initiatives and combines historic charm with modern sustainability - a place that's constantly reinventing itself and yet still maintains its roots.

Day 3 Hambantota/Sri Lanka, 07.00 - 19.00 hrs

The south coast of Sri Lanka is your gateway to the island's wild side: Hambantota, the centre of the district of the same name, is the perfect base for exploring the impressive wilderness and natural beauties of Sri Lanka. Nearby is Yala National Park, famous for having the highest concentration of leopards in the world and for its fascinating animal kingdom. You can follow in their tracks on a photo safari. Udawalawe National Park around the shores of Udawalawe Reservoir has a large elephant population - in the adjacent elephant orphanage visitors can learn interesting facts about these gentle giants. Bundala National Park offers plenty of variety: around 200 species of bird spend the winter here.

Day 4 Trincomalee/Sri Lanka, 12.00 - 19.00 hrs

With deep-blue waters, green hills and a rich historical heritage, Trincomalee on Sri Lanka's north-east coast is just as impressive as the colourful beauty of the Sri Pathrakali Temple. With the Koneswaram Temple, another Hindu sanctuary towers majestically over the sea and the city: graced with a gigantic statue of Shiva, this sacred temple attracts pilgrims from near and far and also offers stunning views of the coast. With unspoilt nature ranging from fine sandy beaches to hot springs, the area surrounding Trincomalee invites you to relax as well as explore.

Days 5 - 7 Relaxation at sea

Day 8 Ko Kood/Thailand, 09.00 - 24.00 hrs

Ko Adang, one of Thailand's last untouched islands, is located in the magnificent Tarutao National Park. Roads and electricity do not exist on the island, which is only 30 m² (323 ft²) in size, but instead you'll find dense jungle, rushing waterfalls and dream beaches that experts consider to be among the most beautiful in Thailand. Enjoy doing sweet nothing in this idyllic setting, take a refreshing dip in the Andaman Sea or dive into the colourful underwater world - home to bright coral reefs and exotic fish. Thanks to the long lay time, you can enjoy the unique flair of the island until late in the evening.

Day 9 Porto Malai/Langkawi/Malaysia, 07.00 - 20.00 hrs

Langkawi, the main island in an archipelago of around 100 limestone islands, enchants visitors with its lush nature, turquoise sea and extensive beaches. Tropical rainforests, lush green rice fields and romantic waterfalls will ensure you soon forget your everyday worries. Enjoy the exotic landscape in whichever way you fancy. Whether you want to actively explore the beauty of Langkawi or relax to your heart's content, this idyllic setting is the perfect place to combine relaxation and adventure.

Day 10 George Town/Penang/Malaysia, 06.00 - 17.00 hrs

George Town on the Malaysian island of Penang combines colonial charm with a lively, multicultural atmosphere. Founded in 1786 by Francis Light as a British trading post, the city soon developed into an important port in Southeast Asia. Still today, scenes in the old town, with its historic buildings, temples, mosques and colourful street art, reflect Malay, Chinese, Indian and European influences. All over the city, the irresistible aroma of the famous Penang cuisine, known for its variety and aromas, wafts from the traditional food stalls. George Town is easy to

The Small Cruise Ship Collection
www.small-cruise-ships.com

01432 507 280 (within UK)

info@small-cruise-ships.com | small-cruise-ships.com



The Small Cruise
Ship Collection

www.small-cruise-ships.com

small-cruise-ships.com

info@small-cruise-ships.com

explore on foot or in a trishaw, a type of rickshaw, allowing you to make an authentic discovery of the history and culture of Penang.

* The shore activities are not included in the cruise price and are in the planning stage. Subject to change.

Day 11 Port Kelang (Kuala Lumpur)/Malaysia, 08.00 – 18.00 hrs

From Port Kelang, you can embark on a discovery tour of exciting Kuala Lumpur, the capital city of Malaysia. KL, as the city is known, offers a fascinating blend of modernity and tradition. The majestic Petronas Twin Towers, the tallest twin towers in the world, dominate the skyline, while there are plenty of exotic discoveries to be made in the narrow streets: markets, Hindu temples and districts such as Little India and Chinatown, which reflect the diversity of Malaysian culture. Kuala Lumpur is an ideal destination for explorers looking for a combination of modern architecture and cultural heritage.

Day 12 Singapore/Singapore, arrival 12.00 hrs Overnight stay on board

Singapore combines modern glamour with deeply rooted traditions. The smallest city in Southeast Asia, whose name means "Lion City", boasts an exciting mix of futuristic buildings, historic districts and green oases. The city's landmark, the Merlion, stands guard over the harbour, while its skyline is dominated by the impressive Marina Bay Sands and its breathtaking SkyPark - featuring one of the most famous infinity pools in the world. Singapore is a great place for strolling along the busy Orchard Road, discovering long-standing traditions in Chinatown and experiencing the future of urban nature in the Gardens by the Bay. You can gather exciting impressions until the evening, because your ship has an overnight lay time here.

Day 13 Singapore/Singapore

Please note:

The Small Cruise
Ship Collection

www.small-cruise-ships.com

01432 507 280 (within UK)

info@small-cruise-ships.com | small-cruise-ships.com

The Small Cruise Ship Collection

www.small-cruise-ships.com

small-cruise-ships.com

info@small-cruise-ships.com

YOUR SHIP: EUROPA

YOUR SHIP: Europa

VESSEL TYPE:

LENGTH:

PASSENGER CAPACITY:

BUILT/REFURBISHED:

Extensive space for a maximum of 400 guests A crew-to-guest ratio of almost one to one Outside suites only, most with a veranda Five restaurants for the ultimate in culinary indulgence - including THE GLOBE by three-star chef Kevin Fehling Top-class entertainment: experience international artists and experts live on board EUROPA Refresh: new fitness and wellness concepts for even more well-being MS EUROPA is an award-winning luxury cruise ship renowned for setting global standards in refined small-ship cruising. Accommodating a maximum of just 400 guests, the ship offers an intimate and highly personalised experience, supported by an almost one-to-one crew-to-guest ratio. Designed around the concept of casual luxury, EUROPA combines spacious surroundings, attentive service, and elegant all-suite accommodation, with all suites featuring ocean views and most offering private verandas. Onboard, guests can enjoy five exceptional restaurants, including fine dining concepts created in collaboration with acclaimed chefs, alongside world-class entertainment, wellness facilities, and thoughtfully curated enrichment experiences. The ship's smaller size allows access to unique itineraries and exclusive ports beyond the reach of larger vessels, while recent EUROPA Refresh

enhancements have introduced updated fitness and wellness concepts for an even more elevated onboard experience. Blending sophistication, comfort, and flexibility, MS EUROPA delivers a truly premium voyage to destinations



worldwide.

The Small Cruise Ship Collection

www.small-cruise-ships.com

01432 507 280 (within UK)

info@small-cruise-ships.com | small-cruise-ships.com

The Small Cruise Ship Collection

www.small-cruise-ships.com

small-cruise-ships.com

info@small-cruise-ships.com

INSIDE YOUR SHIP

Penthouse Deluxe Suite

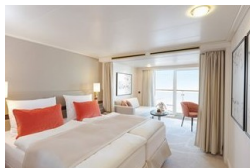
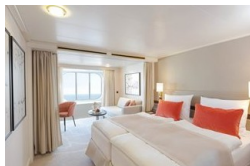


SPA Suite



Suite with panorama window

Veranda Suite Cat. 4-5





The Small Cruise
Ship Collection

www.small-cruise-ships.com

small-cruise-ships.com

info@small-cruise-ships.com

PRICING

04-Jan-2028 to 16-Jan-2028

Suite with panorama window	£4369 GBP pp
Veranda Suite Cat. 4-5	£6065 GBP pp
Veranda Suite Cat. 6-7	£7865 GBP pp
SPA Suite	£8475 GBP pp
Penthouse Deluxe Suite	£13479 GBP pp