

The Small Cruise Ship Collection

www.small-cruise-ships.com

small-cruise-ships.com

info@small-cruise-ships.com

COASTAL MAGIC FROM NICE TO HAMBURG - EUROPE SMALL SHIP CRUISE

This impressive cruise combines exciting cities full of history, culinary delights and pure joie de vivre on Europe's west coast. Taste Spain's specialities, enjoy the charm of French landscapes and marvel at Antwerp's legendary art treasures.



ITINERARY

Day 1 Nice/France, departure 21.00 hrs

Day 2 Relaxation at sea

Day 3 Valencia/Spain, 08.00 - 17.00 hrs

Valencia impresses with its age-old buildings and modern architecture. The heart of the old town is the Plaza de la Reina with its magnificent cathedral, with a bell tower offering fantastic views over the city. It's well worth taking a walk around the

The Small Cruise Ship Collection

www.small-cruise-ships.com

01432 507 280 (within UK)

info@small-cruise-ships.com | small-cruise-ships.com



The Small Cruise Ship Collection

www.small-cruise-ships.com

small-cruise-ships.com

info@small-cruise-ships.com

Mercado Central, where local specialities await culinary enthusiasts. Futuristic charm comes from the Ciutat de les Arts i les Ciències, an impressive complex of buildings and parkland designed by Santiago Calatrava and Felix Candela and incorporating an opera, science museum and aquarium.

Day 4 Relaxation at sea

Day 5 Marbella (Puerto Banus)/Spain, 08.00 – 24.00 hrs

Marbella on the Costa del Sol appeals to visitors thanks to its sophisticated charm and long history: originally founded by the Phoenicians, in the mid-1950s the city started to become a meeting point for the international jet set. Prince Alfonso of Hohenlohe made the Marbella Club the place to be, and in the 1970s Arab aristocrats like the Saudi King and the Emirs of Abu Dhabi and Qatar arrived in town. Today, the newly renovated seafront promenade and the charming little streets around the Plaza de los Naranjos are a great place for a stroll. Numerous bars, restaurants and luxury boutiques add to the special atmosphere of Marbella - a city where tradition and modernity come together in harmony.

Day 6 Relaxation at sea

Day 7 Lisbon/Portugal , arrival 08.00 hrs

A unique blend of magnificent palaces, historic monasteries and picturesque narrow streets greets visitors to the Portuguese capital. Lisbon has a magical charm of times gone by and surprises in store at every corner. The medieval Castelo de Sao Jorge stands guard over the city, while the Alfama district with its narrow winding streets and staircases offers an authentic insight into the old Lisbon. Don't miss a trip on the famous Tram 28, which winds its way up and down the hills. Cafes, shops and

street sellers make the city centre a lively place to be. With its many lifts and trams, the city's steep hills are easy to explore and its many sights can be reached on foot.

Day 8 Lisbon, departure 18.00 hrs

Day 9 Relaxation at sea

Day 10 La Coruna/Spain, 08.00 – 17.00 hrs

Admire the rugged beauty of Galicia in La Coruna. The coastal city in the north-west of Spain boasts a cultural and culinary diversity that is typical of this autonomous community. The Tower of Hercules, the oldest operating lighthouse in the world and a UNESCO World Heritage Site, watches over the coast and is the striking landmark of La Coruna. In the old town, narrow lanes lead to picturesque squares such as the Plaza de Maria Pita, while the kilometre-long promenade along the extensive beaches invites you to take relaxing walks.

Day 11 Relaxation at sea

Day 12 St Malo/France, 05.30 – 17.15 hrs

Towering fortress walls that stand out impressively against the sky and a breathtaking coastal landscape: St Malo is a true jewel on the Emerald Coast of Brittany. The city centre, with its narrow streets and mighty fortress towers, is one of the most famous postcard motifs in France. From the rampart walk of the well-preserved city wall, views stretch across the bay, which is uncovered at low tide and reveals the impressive power of the tides with a tidal range of up to 12 m (39 ft).

Day 13 Honfleur/France, arrival 07.00 hrs

The Small Cruise Ship Collection

www.small-cruise-ships.com

01432 507 280 (within UK)

info@small-cruise-ships.com | small-cruise-ships.com



The Small Cruise Ship Collection

www.small-cruise-ships.com

small-cruise-ships.com

info@small-cruise-ships.com

Charming Honfleur in the Calvados department in the Lower Normandy region is a port with around 6,500 inhabitants on the Seine estuary. The picturesque little town is enchanting with its narrow streets, timbered houses and the church of Sainte Catherine, which is built entirely of wood. With records going back to the eleventh century, Honfleur was an important trading post and was once occupied by the Vikings. In the 19th century, the Impressionists discovered the town: famous painters like Monet, Courbet and Cezanne found inspiration in the picturesque port. Today, Honfleur and the Musee Eugene Boudin are a must for culture lovers and visitors who want to enjoy the town's special charm.

Day 14 Honfleur, departure 02.45 hrs

Day 15 Antwerp/Belgium, 09.00 – 20.00 hrs

On the banks of the River Schelde, Antwerp is one of Belgium's liveliest port and cultural cities. Since the Middle Ages, Europe's second-largest port has brought prosperity to the city and connected it to the North Sea. Still today, the magnificent guild houses on the Grote Markt and the impressive railway station stand as testament to the riches of the past. In the 17th century, it was home to Peter Paul Rubens - and you can admire his impressive artworks in his former residence and studio as well as in the Gothic Church of Our Lady. The cathedral has the highest church tower in Flanders and is a UNESCO World Heritage Site. Superlatives are also to be found in the Diamond Quarter, famous for the Antwerp Cut.

Day 16 Relaxation at sea

Day 17 Hamburg/Germany, arrival 07.00 hrs Individual travel arrangements from cruise arrival point

Hamburg, the "pearl of the north", has a lively atmosphere and rich history. From the vibrant harbour with its majestic ships to the historic red-brick warehouse district, the city features a highly distinctive flair. The Alster, surrounded by green banks, invites you to take relaxing boat trips. The historic old town, with its charming lanes and imposing town hall, exudes a sense of tradition. Culturally, Hamburg offers a variety of museums, theatres and concert halls that inspire visitors with art and music in abundance. The famous Reeperbahn in the St. Pauli district attracts visitors with its diverse nightlife. Hamburg is a city that manages to combine tradition and modernity in a fascinating way.

Please note:

Itineraries are subject to change.

The Small Cruise Ship Collection

www.small-cruise-ships.com

01432 507 280 (within UK)

info@small-cruise-ships.com | small-cruise-ships.com

The Small Cruise Ship Collection

www.small-cruise-ships.com

small-cruise-ships.com

info@small-cruise-ships.com

YOUR SHIP: EUROPA

YOUR SHIP: Europa

VESSEL TYPE:

LENGTH:

PASSENGER CAPACITY:

BUILT/REFURBISHED:

Extensive space for a maximum of 400 guests A crew-to-guest ratio of almost one to one Outside suites only, most with a veranda Five restaurants for the ultimate in culinary indulgence - including THE GLOBE by three-star chef Kevin Fehling Top-class entertainment: experience international artists and experts live on board EUROPA Refresh: new fitness and wellness concepts for even more well-being MS EUROPA is an award-winning luxury cruise ship renowned for setting global standards in refined small-ship cruising. Accommodating a maximum of just 400 guests, the ship offers an intimate and highly personalised experience, supported by an almost one-to-one crew-to-guest ratio. Designed around the concept of casual luxury, EUROPA combines spacious surroundings, attentive service, and elegant all-suite accommodation, with all suites featuring ocean views and most offering private verandas. Onboard, guests can enjoy five exceptional restaurants, including fine dining concepts created in collaboration with acclaimed chefs, alongside world-class entertainment, wellness facilities, and thoughtfully curated enrichment experiences. The ship's smaller size allows access to unique itineraries and exclusive ports beyond the reach of larger vessels, while recent EUROPA Refresh

enhancements have introduced updated fitness and wellness concepts for an even more elevated onboard experience. Blending sophistication, comfort, and flexibility, MS EUROPA delivers a truly premium voyage to destinations



worldwide.

The Small Cruise Ship Collection

www.small-cruise-ships.com

01432 507 280 (within UK)

info@small-cruise-ships.com | small-cruise-ships.com

The Small Cruise Ship Collection

www.small-cruise-ships.com

small-cruise-ships.com

info@small-cruise-ships.com

INSIDE YOUR SHIP

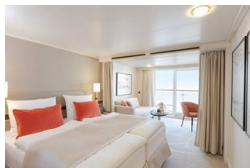
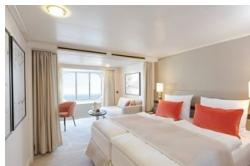
Penthouse Deluxe Suite



SPA Suite



Suite with panorama window Veranda Suite Cat. 4-5





The Small Cruise Ship Collection

www.small-cruise-ships.com

small-cruise-ships.com

info@small-cruise-ships.com

PRICING

31-May-2027 to 16-Jun-2027

Suite with panorama window	£7475 GBP pp
Veranda Suite Cat. 4-5	£8735 GBP pp
Veranda Suite Cat. 6-7	£10719 GBP pp
SPA Suite	£11565 GBP pp
Penthouse Deluxe Suite	£17939 GBP pp

The Small Cruise Ship Collection
www.small-cruise-ships.com

01432 507 280 (within UK)

info@small-cruise-ships.com | small-cruise-ships.com