

The Small Cruise Ship Collection

www.small-cruise-ships.com

small-cruise-ships.com

info@small-cruise-ships.com

CLASSIC VIETNAM & CAMBODIA - LAND & RIVER TOUR

Explore all the wonders of Southern Vietnam and the temples of Angkor in Cambodia in this new extended river & land tour from Pandaw. Combining our timeless 7-night river expedition between Saigon and Siem Reap with specially selected pre and post-cruise tours to enhance your journey, it has never been easier to book your Vietnam and Cambodia adventure with Pandaw.



ITINERARY

DAY 1 ARRIVAL IN SAIGON

Our guide will be waiting for you at the airport to transfer you to your hotel. Free time in the evening, we suggest heading to Nguyen Hue walking street to see the various artists, performers and local residents relaxing in true Vietnamese style.

DAY 2 SAIGON CITY TOUR - CUCHI TUNNELS

In the morning, drive to the extraordinary Cu Chi tunnels, about 65 Km (1.5 hours drive) from Saigon. The complicated system

The Small Cruise Ship Collection

www.small-cruise-ships.com

01432 507 280 (within UK)

info@small-cruise-ships.com | small-cruise-ships.com



The Small Cruise Ship Collection

www.small-cruise-ships.com

small-cruise-ships.com

info@small-cruise-ships.com

of underground network was built by the Viet Cong guerillas. We return to the city for lunch at a local restaurant before taking in the sights of Saigon. Visit the Reunification Hall, Notre Dame Cathedral, General Post Office, Former US Embassy, City Hall and War Museum of Remnants. End the day with some shopping at Ben Thanh market, one of the earliest surviving structures in Saigon and symbol of the city turned tourist shopping hotspot.

DAY 3 FROM SAIGON TO THE DELTA

After breakfast, check out and transfer to the ship.

Embark your Pandaw vessel in central Saigon and relax on the spacious sundeck as we set sail past the towering skyscrapers of Vietnam's bustling metropolis. After lunch onboard you will meet the crew and enjoy local entertainment on the deck as we sail toward the Mekong Delta. We moor overnight on the Vam Co River.

DAY 4 BEN TRE AND THE FERTILE WATERWAYS

Early morning we set sail through the Cho Gao Canal, a vital waterway link for the transportation of goods to and from the city which was constructed in 1876 by the French and offers a fascinating insight to life along the water. We reach Ben Tre and journey by sampans through mangroves and bamboo forests to the fruit orchards abundant in the area. This is a fertile farming region with half of Vietnam's rice production coming from the Mekong Delta. It also hosts a rich artisanal culture which we will witness at a local village specialising in handicrafts. Back aboard we sail deeper into the delta toward Chau Doc.

DAY 5 CHAU DOC AND INTO CAMBODIA

In the morning, we take minivans for a short drive to Sam Mountain, the location of Phuoc Dien Tu or the Hang Pagoda. After climbing the steps we are greeted with stunning views across the Mekong. For those not keen on the stairs, explore the local market instead. Afterwards, we visit the nearby floating fish farms by Sampan before being treated to a private Lion dance performance at a local Village. Upon return to the ship, we navigate a web of canals before dropping anchor on the Vietnam/Cambodia border to undergo Immigration formalities.

Note: During high water periods in October and November, navigation into Chau Doc may be hampered by low bridges meaning today's excursion will be replaced with a local village visit at Long Thuan.

DAY 6 PHNOM PENH

Morning orientation of Phnom Penh by cyclo visiting the Royal Palace and Silver Pagoda followed by the National Museum with its marvellous collection of Angkorian statuary. In the afternoon we visit the Killing Fields and Genocide Museum to learn more about the brutal Khmer Rouge regime. We dock overnight in Phnom Penh city port with its lively bars, restaurants and nightlife. Feel free to explore the city before returning to your hotel on the water.

DAY 7 LIFE ON THE TONLE SAP RIVER

We leave the dock at Phnom Penh early morning and sail up the winding channels of the Tonle Sap River to Kampong Tralach. We travel by ox-cart around the river-side villages, markets and temples to get a sense of life in rural Cambodia. In the evening cocktails are served around a fire pit at a small fishing village where we will be joined by village folk keen to share tales and show us their traditional dancing.

The Small Cruise Ship Collection
www.small-cruise-ships.com

01432 507 280 (within UK)

info@small-cruise-ships.com | small-cruise-ships.com



The Small Cruise Ship Collection

www.small-cruise-ships.com

small-cruise-ships.com

info@small-cruise-ships.com

DAY 8 OUDONG MEDITATIONS AND PAK RUSSEI SILK

In the morning, travel by coach to the ancient capital of Cambodia, Oudong where we visit the Vipassana Dhura Meditation Centre. Walk around the vast complex with its impressive Khmer architecture and experience a short meditation class to quieten your mind. We re-join our ship at Prek Kdam before sailing back onto the Mekong proper during lunch. This afternoon we step ashore at Pak Russei, a small and remote village on the banks of the Mekong. We will explore on foot and visit local craftspeople weaving silk and producing handmade noodles. Before returning to the ship, we learn about the ancient art of Bokator, a traditional form of martial art with a private performance in the village.

DAY 9 PEAM CHI KORNG POTTERY VILLAGE

Enjoy morning Tai Chi or just a coffee on deck as we take a sunrise cruise to Peam Chi Korng, an untouched gem that is a hub of pottery in Cambodia. After a short tuk tuk ride from the banks of the Mekong, we witness the local potters in action before continuing to explore the village and local fresh market where you can test your language skills. In the afternoon we continue sailing along the mighty Mekong to Steung Trang, our final destination before your crew provides some final evening entertainment and a sumptuous farewell dinner is prepared by your kitchen team.

DAY 10 ARRIVAL SIEM REAP - ANGKOR WAT

Disembark and travel by coach from Steung Trang through stunningly lovely countryside to reach Siem Reap, adjacent to Angkor Wat.

Your guide will meet you upon arrival to Siem Reap then arrange lunch before check in. In the afternoon we visit the most famous

temple of Cambodia, Angkor Wat. It is visually, architecturally and artistically breathtaking with a massive three tiered pyramid crowned by five beehive-like towers rising 65 meters from ground level. This temple is the centerpiece of any visit to the temples of Angkor. Take in the romantic view at sunset from Bakheng Hill.

DAY 11 TEMPLES OF ANGKOR

Following breakfast in your hotel, set out for a day of exploration amongst the various temples and ruins of the Angkor Empire. The morning we will cover the large complex surrounding the imposing Bayon Temple. After lunch at a local restaurant, we discover more secluded temples including the awe inspiring and overgrown Ta Prohm, made famous by the Tomb Raider movie.

In the evening we experience a true highlight of Cambodia and meet talented young performers in a breathtaking and original Cambodian show at Phare Ponleu Selpak's Circus. Not just for entertainment, Phare is also a social enterprise supporting the youth of Cambodia gain skills and employment.

DAY 12 DEPARTURE

After breakfast check out of your hotel and head to the airport for your onward flight.

Please note:

Itineraries are subject to change.

The Small Cruise Ship Collection

www.small-cruise-ships.com

01432 507 280 (within UK)

info@small-cruise-ships.com | small-cruise-ships.com



The Small Cruise
Ship Collection

www.small-cruise-ships.com

small-cruise-ships.com

info@small-cruise-ships.com

YOUR SHIP: MEKONG PANDAW

YOUR SHIP: Mekong Pandaw

VESSEL TYPE:

LENGTH:

PASSENGER CAPACITY:

BUILT/REFURBISHED:

Built in Rangoon in 2002 she was sailed round to Saigon under her own power and many a drama described in Paul Strachan's Pandaw Story. This ship was designed specially for the Mekong and unlike our other P class ships does not have a flying bridge. The reason was so she could get under a road bridge. She did actually scrape under on her maiden but it was so scary that Paul Strachan, then standing on the bridge, never dared attempt it again. As a result, we ended up with this incredible 750 square meter teak deck that even has a full size billiard table. The MP as she is affectionately known is our most spacious ship with wider promenades, a larger dining hall and more public space per passenger than any known ship afloat. Seriously! In 2012 she was refitted and lower deck cabins removed in favour of a professional spa, gym, library lounge and office. She is quite justifiably the most splendid ship on the Mekong and the envy of anything that floats by. ACCOMMODATION 18 upper deck, 6 main deck staterooms - 170 square feet, finished in teak and brass - Panoramic French window, leading to personal deck space - New bathrooms with natural stone shower and branded quality fittings - Kimonos and slippers - Spa-branded amenities - Unlimited mineral water - Electric mini safe - Central

AC with individual control - Imported quality linens with duvet and two kind of pillows - Premium mattresses - Convertible bed configuration - Welcome flower arrangement and welcome gift - Mirror - Multi-configuration plugs - Generous closet space and under-bed storage - Hair dryer - Daily nightly turndown service - 24h laundry service - Complimentary evening canapes WINING & DINING Local master chef heading an experienced international culinary team - Semi-buffet breakfast, Semi-buffet lunch, and seated theme dinners - Daily lean & light menu options - Complimentary coffee, water, tea, soft drinks, local beer, local spirits, juices - Extensive wine list with premium wines - Series of cultural performances, educational talks, cooking classes, and ship tour - Welcome drink on arrival - Welcome cocktail - Farewell reception - Theme- and gala dinners - Spacious, air-conditioned saloon bar with nightly entertainment - Sundeck bar with complimentary ice cream from sunrise to sunset - Pool table on sundeck - 24hrs hospitality bar - Onboard bakery with daily freshly baked breads and rolls ON EXCURSIONS Admissions - Shoe cleaning after excursions - Bottled drinking water - Cold towel service after excursions - Refreshing drink following excursions - Maximum 24 guests per guide on all excursions - Full-size motor coach on all excursions (maximum of 24 passengers per coach) - Deluxe sampans with cold towel service, fresh fruit, and tea/coffee - Comfortable "Pandaw Explorer" excursion boat - 1st aid trained assistant guide to follow all tours and excursions SAFETY & SECURITY All onboard crew is trained and certified as per international marine standards (VIRES) - Fire alarm system in all cabins, public areas and back areas - Fire fighting system in all ship areas - Expert

The Small Cruise
Ship Collection

www.small-cruise-ships.com

01432 507 280 (within UK)

info@small-cruise-ships.com | small-cruise-ships.com



The Small Cruise Ship Collection

www.small-cruise-ships.com

small-cruise-ships.com

info@small-cruise-ships.com

marine superintendant - 24 hrs watch on duty - Certified hygiene standards for all areas (Johnson & Diversey) ONBOARD STAFF Captain - First Officer - Chief Engineer - 1st Engineer - Electrician - Bosun & nautical crew - Ship manager - Housekeeping - Dining - Bar keeper - Chefs - Spa therapist - Local tour guides PUBLIC SPACES Guest relation desk - Largest public space to passenger ratio of any cruise ship in the world - Shop, supporting fair trade - Lecture and meeting room with oversized flat screen TV, LSD projector and sound system - Art gallery featuring local art and artists - Library with contemporary and classic literature - Wireless internet in all



public areas.



The Small Cruise Ship Collection

www.small-cruise-ships.com

01432 507 280 (within UK)

info@small-cruise-ships.com | small-cruise-ships.com

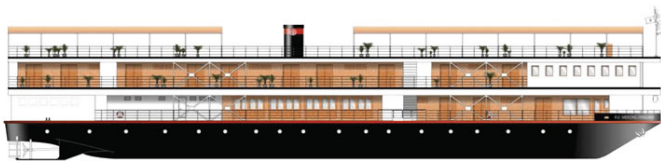
The Small Cruise Ship Collection

www.small-cruise-ships.com

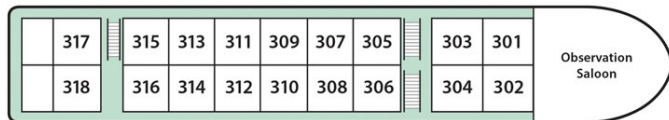
small-cruise-ships.com

info@small-cruise-ships.com

INSIDE YOUR SHIP



ELEVATION



UPPER DECK PLAN

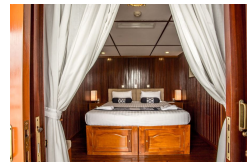


MAIN DECK PLAN



LOWER DECK PLAN

Main Deck Twin Sharing Upper Deck Twin Sharing





The Small Cruise Ship Collection

www.small-cruise-ships.com

small-cruise-ships.com

info@small-cruise-ships.com

PRICING

26-Nov-2026 to 07-Dec-2026

Main Deck Twin Sharing	£4260 GBP pp
Upper Deck Twin Sharing	£5046 GBP pp
Main Deck Twin Single Use	£5824 GBP pp
Upper Deck Twin Single Use	£6735 GBP pp

18-Feb-2027 to 01-Mar-2027

Main Deck Twin Sharing	£5252 GBP pp
Upper Deck Twin Sharing	£6221 GBP pp
Main Deck Twin Single Use	£7180 GBP pp
Upper Deck Twin Single Use	£8304 GBP pp

04-Mar-2027 to 15-Mar-2027

Main Deck Twin Sharing	£4207 GBP pp
Upper Deck Twin Sharing	£4976 GBP pp
Main Deck Twin Single Use	£5768 GBP pp
Upper Deck Twin Single Use	£6660 GBP pp

ADDITIONAL CHARGES:

Port Taxes & Fees 65 USD pp