



## CENTRAL SPITSBERGEN, ARCTIC AUTUMN (NOORDERLICHT)

The central Spitsbergen cruise offers the chance to explore both the beautiful fjord region as well as the history of the people who have lived and worked here. The expedition is also a wonderful way to enjoy the wildlife in its natural habitat and one of the great attractions in the Arctic: The Northern Lights. Leaving Trygghamna early in the morning and set sail to the north side of Bell Sund fjord system with fascinating geology and amazing landscapes. Bell Sund is a fjord system with two major branches (Van Mijenfjord, Van Keulenfjord) and one smaller side bay (Recherchefjord). The geology is fascinating and has created amazing landscapes, such as the long, narrow island of Akseløya that blocks Van Mijenfjord almost completely.



### ITINERARY

#### Day 1: Largest town, biggest island

You touch down in Longyearbyen, the administrative center of Spitsbergen, the largest island of the Svalbard archipelago. Enjoy strolling around this former mining town, whose parish church and Svalbard Museum make for fascinating attractions. Though the countryside appears stark, more than a hundred species of plant have been recorded in it. In the early evening the ship sails out of Isfjorden, where you might spot the first minke whale of your voyage. In the evening you sail for Trygghamna, where you see the remains of a 17th-century English whaling station and 18th-century Pomor hunting station, both of which you can visit the next morning.

#### Day 2 – 5: Glacial fjords, historic finds



Leaving Trygghamna early in the morning, you sail to the north side of Bellsund. Here you find a fjord system with two major branches: Van Mijenfjord and Van Keulenfjord – and one smaller side bay, Recherchefjord. The geology has created particularly unique landscapes here, such as the long and narrow island of Akseløya, which blocks Van Mijenfjord almost completely. In Fridtjovhamna, the calving glacier Fridtjovbreen is surrounded by picturesque mountains. The rich wildlife of this area has attracted hunters throughout the centuries. At Ahlstrandhalvøya you can walk in the hunters' footsteps, examining the remains of their huts. Recherchefjord has one of the highest concentration of historical sites in all of Spitsbergen, ranging from 17th century whaling culture to the mining period of the early 20th century. The glacier Recherchebreen ends at a lagoon, likely to be frozen in October, and several smaller icebergs. Polar bears are commonly sighted all over Bellsund, so keep your eyes open for them and for the belugas that frequent this area

**Please Note:**

All itineraries are for guidance only. Programs may vary depending on local ice and weather conditions and in order to take advantage of opportunities to see wildlife. Flexibility is paramount for expedition cruises.

**Day 6: Russian waypoints**

You next pay a visit to Barentsburg, the only inhabited Russian settlement in Spitsbergen. An alternative is Colesbukta, an abandoned Russian coal mining settlement.

**Day 7: Chasing the Arctic chill**

Sailing into the inner reaches of the Isfjord system, you can see the new ice that is forming on the heads of the fjords. You may also experience temperatures as low as -10° C (14° F), depending on how clear the sky is.

**Day 8: There and back again**

Every adventure, no matter how grand, must eventually come to an end. You disembark in Longyearbyen, taking home memories that will accompany you wherever your next adventure lies.





## The Small Cruise Ship Collection

[www.small-cruise-ships.com](http://www.small-cruise-ships.com)

[small-cruise-ships.com](http://small-cruise-ships.com)

[info@small-cruise-ships.com](mailto:info@small-cruise-ships.com)

### YOUR SHIP: NOORDERLICHT

**YOUR SHIP:**

**Noorderlicht**

**VESSEL TYPE:**

**LENGTH:**

**PASSENGER CAPACITY:**

**BUILT/REFURBISHED:**

The Noorderlicht was originally built in 1910 in Flensburg, Germany as a three-masted schooner. For most of her existence she served as a light-vessel on the Baltic. In 1991 the present owners purchased the hull and re-rigged and refitted her thoroughly, under the rules of "Register Holland". The Noorderlicht now has a well-balanced two-masted schooner rig and is capable of sailing the seven seas. The qualified captains have a great experience of the oceans. Together with the rest of the crew, they will do everything possible to ensure that you have a wonderful and unforgettable journey. Ice class: The Noorderlicht has no ice class. She was anchored year around near Flensburg (Germany). Due to heavy ice conditions in the winter time, the bow of the Noorderlicht was strengthened. The vessel is not an ice breaker but has a strengthened bow.





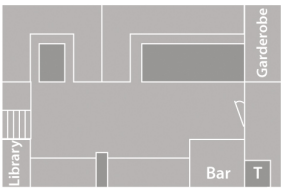
The Small Cruise  
Ship Collection

[www.small-cruise-ships.com](http://www.small-cruise-ships.com)

[small-cruise-ships.com](http://small-cruise-ships.com)

[info@small-cruise-ships.com](mailto:info@small-cruise-ships.com)

# INSIDE YOUR SHIP



s/v Noorderlicht deckplan						
 twin shared inside	 upper and lower berth	<table><tr><td>T</td><td>Toilet</td></tr><tr><td>S</td><td>Shower</td></tr></table>	T	Toilet	S	Shower
T	Toilet					
S	Shower					



The Small Cruise  
Ship Collection

[www.small-cruise-ships.com](http://www.small-cruise-ships.com)

01432 507 280 (within UK)

[info@small-cruise-ships.com](mailto:info@small-cruise-ships.com) | [small-cruise-ships.com](http://small-cruise-ships.com)



## The Small Cruise Ship Collection

[www.small-cruise-ships.com](http://www.small-cruise-ships.com)



[small-cruise-ships.com](http://small-cruise-ships.com)

[info@small-cruise-ships.com](mailto:info@small-cruise-ships.com)

## PRICING

---



The Small Cruise  
Ship Collection

[www.small-cruise-ships.com](http://www.small-cruise-ships.com)

**01432 507 280** (within UK)

[info@small-cruise-ships.com](mailto:info@small-cruise-ships.com) | [small-cruise-ships.com](http://small-cruise-ships.com)