



The Small Cruise  
Ship Collection

[www.small-cruise-ships.com](http://www.small-cruise-ships.com)



[small-cruise-ships.com](http://small-cruise-ships.com)

[info@small-cruise-ships.com](mailto:info@small-cruise-ships.com)

## CALIFORNIAN LIFESTYLE MEETS CANADIAN CHARM - WEST COAST CRUISE

The American way of life and expansive landscapes come together on the coasts of the USA and Canada. Wander through San Francisco, Vancouver and Seattle on leisurely explorations. Nature in its unspoilt appeal also has unforgettable impressions in store for you.



### ITINERARY

Day 1 San Francisco/California/USA Overnight stay on board

Day 2 San Francisco, departure 11.00 hrs

Day 3 Relaxation at sea

Day 4 Astoria/Oregon/USA, 08.00 – 19.00 hrs

Astoria, a city that offers deep insights into the maritime history of the region, is situated at the mouth of the Columbia River in



The Small Cruise  
Ship Collection

[www.small-cruise-ships.com](http://www.small-cruise-ships.com)

01432 507 280 (within UK)

[info@small-cruise-ships.com](mailto:info@small-cruise-ships.com) | [small-cruise-ships.com](http://small-cruise-ships.com)



## The Small Cruise Ship Collection

[www.small-cruise-ships.com](http://www.small-cruise-ships.com)

[small-cruise-ships.com](http://small-cruise-ships.com)

[info@small-cruise-ships.com](mailto:info@small-cruise-ships.com)

Oregon. Venturing to the Columbia River Maritime Museum provides fascinating details about life and challenges at sea. A stroll through the city takes you past historic buildings and to the impressive Astoria-Megler Bridge, which is one of the longest bridges over a river estuary and connects Astoria with the neighbouring state of Washington. Along the waterfront, numerous restaurants invite you to enjoy local specialities, the view of the river and the maritime flair of the city.

**Day 5 Victoria/Vancouver Island/British Columbia/Canada, arrival 12.00 hrs**  
Vancouver Island, a Canadian "Wild West Idyll", is ideal for outdoor activities and features lots of greenery, a rugged coastline and the Della Falls - at 440 m (1,443 ft), one of the highest waterfalls in Canada. The rugged coastline not only offers fantastic hiking trails, but is also a perfect setting for whale watching. The island's capital Victoria exudes British charm and has sights to discover such as the Parliament Buildings and the famous Fairmont Empress Hotel.

**Day 6 Victoria, departure 19.00 hrs**

**Day 7 Nanaimo/Vancouver Island/British Columbia/Canada, 08.00 - 18.00 hrs Vancouver/British Columbia/Canada, arrival 22.30 hrs**  
Nanaimo on Vancouver Island is a charming harbour town known for its natural beauty and diverse recreational opportunities. To enjoy life and the panorama to the fullest, the famous Harbourfront Walkway invites you to take relaxing strolls or visit the cafes and restaurants - from here you can enjoy magnificent views of the water and the surrounding mountains. A highlight for those with a sweet tooth is the Nanaimo Bar, a popular local sweet made from coconut, maple sugar and a custard buttercream filling. The area around Nanaimo offers numerous outdoor activities such as hiking and cycling,

especially in the idyllic Neck Point Park and Westwood Lake Park - perfect places to experience the wonderful natural scenery of Vancouver Island.

**Day 8 Vancouver**

Vancouver is nestled between the Strait of Georgia, a waterway of the Pacific Ocean, and majestic mountain ranges. The seaport on the west coast of British Columbia is one of the most densely populated and ethnically diverse cities in Canada. In addition to impressive buildings such as the Vancouver Public Library and Canada Place, the metropolis has numerous parks such as the famous Stanley Park - ideal for relaxing walks. Vancouver is regularly recognised as one of Canada's most liveable cities and is a popular film location. Its vibrant art, theatre and music scene offers visitors inspiration for mind and soul.

**Day 9 Vancouver, departure 18.00 hrs**

**Day 10 Seattle/Washington/USA, arrival 07.00 hrs**

Seattle, the largest city in the north-west of the United States, is nestled between Puget Sound and Lake Washington. Thanks to its abundance of urban greenery, it is often referred to as "the Emerald City". Boasting a high quality of life and impressive skyline, the metropolis attracts visitors with iconic attractions such as the Space Needle, which was built for the world fair held in Seattle in 1962. Pike Place Market and Chihuly Garden and Glass are further landmarks of the city, while music, especially the grunge movement of the 1990s, helped make Seattle world famous.

**Day 11 Seattle, departure 19.00 hrs**

The Small Cruise Ship Collection

[www.small-cruise-ships.com](http://www.small-cruise-ships.com)

**01432 507 280** (within UK)

[info@small-cruise-ships.com](mailto:info@small-cruise-ships.com) | [small-cruise-ships.com](http://small-cruise-ships.com)



## The Small Cruise Ship Collection

[www.small-cruise-ships.com](http://www.small-cruise-ships.com)

[small-cruise-ships.com](http://small-cruise-ships.com)

[info@small-cruise-ships.com](mailto:info@small-cruise-ships.com)

Days 12 - 13 Relaxation at sea

Day 14 Eureka/California/USA, 08.00 – 20.00 hrs

Situated on California's northern coast, Eureka exudes its own distinctive charm. Old Town Eureka has magnificent Victorian architecture to offer and Carson Mansion, the town's landmark, has a spellbinding appeal on visitors. Nature and garden lovers are in for a treat at the Humboldt Botanical Garden, which is home to an impressive variety of plants. The nearby Redwood National Park is another highlight: the famous sequoia trees grow here, majestic redwoods up to 2,000 years old that represent a fascinating link to the earth's very past.

Day 15 San Francisco/California/USA, arrival 17.00 hrs, Overnight stay on board

San Francisco is one of the most iconic cities in the USA. The world-famous Golden Gate Bridge, the alternative district of Haight-Ashbury and colourful Chinatown are just a few of its many highlights. Artistic murals in the trendy Mission District, the charming cable cars in Fisherman's Wharf and the impressive view of the former prison island of Alcatraz are also among the unique experiences that San Francisco offers its visitors. Foodies are in for a treat in the historic Ferry Building, which is home to a wide variety of delicatessens and world-class restaurants.

Day 16 San Francisco, Overnight stay on board

Day 17 San Francisco

Please note:

Itineraries are subject to change.



The Small Cruise  
Ship Collection

[www.small-cruise-ships.com](http://www.small-cruise-ships.com)

**01432 507 280** (within UK)

[info@small-cruise-ships.com](mailto:info@small-cruise-ships.com) | [small-cruise-ships.com](http://small-cruise-ships.com)

# The Small Cruise Ship Collection

[www.small-cruise-ships.com](http://www.small-cruise-ships.com)

[small-cruise-ships.com](http://small-cruise-ships.com)

[info@small-cruise-ships.com](mailto:info@small-cruise-ships.com)

## YOUR SHIP: EUROPA

**YOUR SHIP:** Europa

**VESSEL TYPE:**

**LENGTH:**

**PASSENGER CAPACITY:**

**BUILT/REFURBISHED:**

Extensive space for a maximum of 400 guests A crew-to-guest ratio of almost one to one Outside suites only, most with a veranda Five restaurants for the ultimate in culinary indulgence - including THE GLOBE by three-star chef Kevin Fehling Top-class entertainment: experience international artists and experts live on board EUROPA Refresh: new fitness and wellness concepts for even more well-being MS EUROPA is an award-winning luxury cruise ship renowned for setting global standards in refined small-ship cruising. Accommodating a maximum of just 400 guests, the ship offers an intimate and highly personalised experience, supported by an almost one-to-one crew-to-guest ratio. Designed around the concept of casual luxury, EUROPA combines spacious surroundings, attentive service, and elegant all-suite accommodation, with all suites featuring ocean views and most offering private verandas. Onboard, guests can enjoy five exceptional restaurants, including fine dining concepts created in collaboration with acclaimed chefs, alongside world-class entertainment, wellness facilities, and thoughtfully curated enrichment experiences. The ship's smaller size allows access to unique itineraries and exclusive ports beyond the reach of larger vessels, while recent EUROPA Refresh

enhancements have introduced updated fitness and wellness concepts for an even more elevated onboard experience. Blending sophistication, comfort, and flexibility, MS EUROPA delivers a truly premium voyage to destinations



worldwide.

The Small Cruise Ship Collection

[www.small-cruise-ships.com](http://www.small-cruise-ships.com)

01432 507 280 (within UK)

[info@small-cruise-ships.com](mailto:info@small-cruise-ships.com) | [small-cruise-ships.com](http://small-cruise-ships.com)



The Small Cruise  
Ship Collection

[www.small-cruise-ships.com](http://www.small-cruise-ships.com)



[small-cruise-ships.com](http://small-cruise-ships.com)

[info@small-cruise-ships.com](mailto:info@small-cruise-ships.com)

## INSIDE YOUR SHIP

Penthouse Deluxe Suite



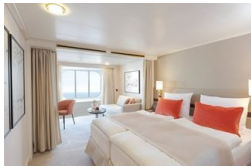
Penthouse Grand Suite



SPA Suite



Suite with panorama window



Veranda Suite Cat. 4-5

Veranda Suite Cat. 6-7



The Small Cruise  
Ship Collection

[www.small-cruise-ships.com](http://www.small-cruise-ships.com)

01432 507 280 (within UK)

[info@small-cruise-ships.com](mailto:info@small-cruise-ships.com) | [small-cruise-ships.com](http://small-cruise-ships.com)



The Small Cruise  
Ship Collection

[www.small-cruise-ships.com](http://www.small-cruise-ships.com)



[small-cruise-ships.com](http://small-cruise-ships.com)

[info@small-cruise-ships.com](mailto:info@small-cruise-ships.com)

## PRICING

18-Mar-2027 to 03-Apr-2027

Suite with panorama window	£5995 GBP pp
Veranda Suite Cat. 6-7	£7039 GBP pp
Veranda Suite Cat. 4-5	£7039 GBP pp
SPA Suite	£13045 GBP pp
Penthouse Deluxe Suite	£20725 GBP pp
Penthouse Grand Suite	£33535 GBP pp



The Small Cruise  
Ship Collection

[www.small-cruise-ships.com](http://www.small-cruise-ships.com)

01432 507 280 (within UK)

[info@small-cruise-ships.com](mailto:info@small-cruise-ships.com) | [small-cruise-ships.com](http://small-cruise-ships.com)