



The Small Cruise Ship Collection

www.small-cruise-ships.com



small-cruise-ships.com

info@small-cruise-ships.com

BRITISH SUMMER FINALE SMALL SHIP CRUISE

Stroll through the lively cities of England, Scotland and Ireland and admire the diversity of nature, from fragrant gardens to the lakes of the Highlands - this regal mix will delight you at every turn.



ITINERARY

Day 1 Individual travel arrangements to cruise departure point Hamburg/Germany, departure 19.00 hrs

Day 2 Relaxation at sea

Day 3 Newcastle upon Tyne/England/Great Britain, 07.00 – 18.00 hrs
As England's northernmost major city, Newcastle upon Tyne is the gateway to Scotland. This lively student city impressively combines history and modernity: today a dynamic metropolis with galleries and contemporary architecture, but around 1,800



The Small Cruise Ship Collection

www.small-cruise-ships.com

01432 507 280 (within UK)

info@small-cruise-ships.com | small-cruise-ships.com



The Small Cruise Ship Collection

www.small-cruise-ships.com



small-cruise-ships.com

info@small-cruise-ships.com

years ago, the site featured the Roman fortification Pons Aelius, part of the legendary Hadrian's Wall. Then as now, the city's appearance is dominated by the River Tyne, which is spanned by seven bridges, including the futuristic Millennium Bridge: an innovative mechanism allows it to rotate around its longitudinal axis - an elegant spectacle when the bridge opens to allow ships to pass through.

Day 4 Newhaven (Edinburgh)/Scotland/Great Britain, arrival 08.00 hrs

Edinburgh welcomes visitors with a fascinating contrast between its medieval Old Town and Georgian New Town, where history meets vibrant urban culture. The impressive Scottish capital looks back over a long history and is famous for Edinburgh Castle, which sits proudly on top of Castle Rock where you can enjoy the expansive views. Princes Street Gardens are a great place to relax and wander around in the city centre, while the many pubs in the narrow, winding streets will tempt you to make a detour - after all, Edinburgh is one of the European cities with the highest density of pubs. It is also considered a literary centre: Joanne K. Rowling and Robert Louis Stevenson found inspiration in the uniquely special atmosphere of the city. The EUROPA will stay overnight - ideal for exploring Edinburgh at your leisure.

Day 5 Newhaven (Edinburgh)/Scotland/Great Britain, departure 14.00 hrs

Day 6 Invergordon/Scotland/Great Britain, 08.00 - 18.00 hrs

Invergordon is situated on the banks of Cromarty Firth in the Scottish Islands. This charming little coastal town has developed over time from an industrial centre to a place steeped in history and culture. The High Street with its little shops and historic post office is charming, and along the seafront promenade you will be able to see some colourful murals that bring the town's past

to life. The heaths and moors of the Highlands are full of myths and legends, including the mysterious sea monster Nessie in nearby Loch Ness. A special highlight for connoisseurs is the Invergordon Distillery, where you can try some of their finest whisky.

Day 7 Kirkwall/Orkney Islands/Great Britain, 08.00 - 18.00 hrs

Kirkwall, the main town on the Orkney Islands, boasts historical charm and a rich history dating back to the eleventh century. Back then, it was still called Kirkjuvagr - "church in the bay" - and today the cityscape is still characterised by the impressive St Magnus Cathedral. The Orkney Islands, which stretch along the northern tip of Scotland, have a magical atmosphere that can be felt as you approach the harbour, when dozens of little green islands emerge out of the fog. Archaeological wonders such as the Neolithic settlement of Skara Brae, the mystical Ring of Brodgar or the Maeshowe chambered cairn provide deep insights into the historical heart of Scotland and draw history lovers under their spell.

Day 8 Relaxation at sea

Day 9 Greenock/Scotland/Great Britain, 07.00 - 20.00 hrs

Greenock, once an important centre for shipbuilding, is an ideal starting point for exploring Glasgow. Scotland's largest city is as famous for the warmth of its residents as it is for its vibrant arts and culture scene, which earned it the title of UNESCO City of Music. If you want to explore the old town on foot, the best place to start is the magnificent George Square. Here, statues of famous British personalities are particularly eye-catching as well as the imposing buildings from the Victorian era. While architectural treasures such as the town hall, cathedral and venerable trading houses continue to guide visitors through



The Small Cruise Ship Collection
www.small-cruise-ships.com

01432 507 280 (within UK)

info@small-cruise-ships.com | small-cruise-ships.com



The Small Cruise Ship Collection

www.small-cruise-ships.com

small-cruise-ships.com

info@small-cruise-ships.com

Glasgow's history, the works of modern artists adorn the Contemporary Art Trail that winds its way through the city centre.

Day 10 Belfast/Northern Ireland/United Kingdom, 06.30 – 22.00 hrs

Belfast combines tradition and modernity in a fascinating way. Known for its eventful industrial history, especially shipbuilding and the Titanic, the capital of Northern Ireland has developed into a cultural hotspot today. The murals or impressive wall paintings tell of its past and symbolise peace. Sights such as the Titanic Belfast Museum and St George's Market attract visitors, while the magnificent City Hall adorns the historic city centre. Thanks to the long layover, you can soak up Belfast's atmosphere well into the evening.

Day 11 Dun Laoghaire (Dublin)/Ireland, 08.00 – 19.00 hrs

Welcome to the coast of Ireland's capital! From Dun Laoghaire, the charming harbour town south of Dublin, you can easily set off on a tour of discovery through the home of pub culture. Ireland's capital city, Dublin, combines the heritage of around 1,000 years of history with the inspiring energy of a modern metropolis. The possibilities for discovering Dublin as you wish are respectively diverse. History buffs explore the medieval streets around Christ Church Cathedral or the elegant streets of the Georgian Quarter. If you're looking for inspiration from the latest trends, you'll find trendy boutiques, galleries and bars around Grafton Street. The Irish way of life can still be felt today in the pubs of Temple Bar district. Thanks to the long lay time, you can enjoy Dublin's flair until late in the evening.

Day 12 Liverpool/England/Great Britain, 08.00 – 24.00 hrs

Music history comes alive in Liverpool, the city at the mouth of the River Mersey: the legendary Beatles transformed this former industrial centre into a mecca for music lovers. Ever since

Liverpool was 2008 European Capital of Culture, the city's cultural life has truly blossomed - in addition to iconic places such as Penny Lane and Strawberry Fields, important art galleries such as the Tate Liverpool have been established. Whether it's Premier League football, the magnificent cathedrals or the port with its docks - the diversity of its highlights ensures that Liverpool will leave a lasting impression.

Day 13 Relaxation at sea

Day 14 Falmouth/England/Great Britain, 07.30 – 19.00 hrs

Named after the River Fal, Falmouth was already an important port in the 17th century and is now a popular fishing and holiday destination. With Bronze Age stone circles, holy wells, romantic manor houses and quaint pubs, it offers a cinematic backdrop in the heart of the Cornish countryside. The Gulf Stream ensures the region has a mild, subtropical climate, which is reflected in the lush vegetation. Particularly appealing places to explore include Bodmin Moor, the surrounding beaches and picturesque bays and the Coastal Path - at 430 km (267 mi.) long, one of the most beautiful coastal paths in Europe.

Day 15 Portsmouth/England/Great Britain, 08.00 – 18.00 hrs

Portsmouth on the south coast of England in the county of Hampshire has a seafaring history stretching back over 800 years. The city has been an important marine base in England since the Middle Ages and today it is a symbol of maritime tradition - visitors to the Royal Marines Museum can learn some interesting facts about its eventful history. After the Second World War, many historic buildings, including both cathedrals, were lovingly restored. The Spinnaker Tower in the harbour dominates the city's skyline: at 170 m (558 ft) tall, the tower

The Small Cruise Ship Collection

www.small-cruise-ships.com

01432 507 280 (within UK)

info@small-cruise-ships.com | small-cruise-ships.com



The Small Cruise Ship Collection

www.small-cruise-ships.com



small-cruise-ships.com

info@small-cruise-ships.com

offers amazing views over the bay and has been a proud landmark of the port city since it was opened in 2005.

Day 16 Relaxation at sea

Day 17 Hamburg/Germany, arrival 07.00 hrs Individual travel arrangements from cruise arrival point

Please note:

* The shore activities are not included in the cruise price and are in the planning stage. Subject to change.



The Small Cruise
Ship Collection

www.small-cruise-ships.com

01432 507 280 (within UK)

info@small-cruise-ships.com | small-cruise-ships.com



The Small Cruise Ship Collection

www.small-cruise-ships.com



small-cruise-ships.com

info@small-cruise-ships.com

YOUR SHIP: EUROPA

YOUR SHIP: Europa

VESSEL TYPE:

LENGTH:

PASSENGER CAPACITY:

BUILT/REFURBISHED:

Extensive space for a maximum of 400 guests A crew-to-guest ratio of almost one to one Outside suites only, most with a veranda Five restaurants for the ultimate in culinary indulgence - including THE GLOBE by three-star chef Kevin Fehling Top-class entertainment: experience international artists and experts live on board EUROPA Refresh: new fitness and wellness concepts for even more well-being MS EUROPA is an award-winning luxury cruise ship renowned for setting global standards in refined small-ship cruising. Accommodating a maximum of just 400 guests, the ship offers an intimate and highly personalised experience, supported by an almost one-to-one crew-to-guest ratio. Designed around the concept of casual luxury, EUROPA combines spacious surroundings, attentive service, and elegant all-suite accommodation, with all suites featuring ocean views and most offering private verandas. Onboard, guests can enjoy five exceptional restaurants, including fine dining concepts created in collaboration with acclaimed chefs, alongside world-class entertainment, wellness facilities, and thoughtfully curated enrichment experiences. The ship's smaller size allows access to unique itineraries and exclusive ports beyond the reach of larger vessels, while recent EUROPA Refresh

enhancements have introduced updated fitness and wellness concepts for an even more elevated onboard experience. Blending sophistication, comfort, and flexibility, MS EUROPA delivers a truly premium voyage to destinations



worldwide.



The Small Cruise Ship Collection

www.small-cruise-ships.com

01432 507 280 (within UK)

info@small-cruise-ships.com | small-cruise-ships.com



The Small Cruise Ship Collection

www.small-cruise-ships.com



small-cruise-ships.com

info@small-cruise-ships.com

INSIDE YOUR SHIP

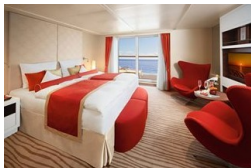
Penthouse Deluxe Suite



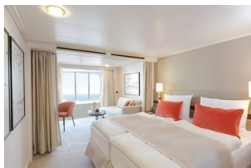
Penthouse Grand Suite



SPA Suite



Suite with panorama window



Veranda Suite Cat. 4-5

Veranda Suite Cat. 6-7



The Small Cruise Ship Collection

www.small-cruise-ships.com

01432 507 280 (within UK)

info@small-cruise-ships.com | small-cruise-ships.com



The Small Cruise Ship Collection

www.small-cruise-ships.com



small-cruise-ships.com

info@small-cruise-ships.com

PRICING

11-Sep-2028 to 27-Sep-2028

Suite with panorama window	£7155 GBP pp
Veranda Suite Cat. 4-5	£9979 GBP pp
Veranda Suite Cat. 6-7	£12955 GBP pp
SPA Suite	£13985 GBP pp
Penthouse Deluxe Suite	£22265 GBP pp
Penthouse Grand Suite	£35339 GBP pp



The Small Cruise Ship Collection

www.small-cruise-ships.com

01432 507 280 (within UK)

info@small-cruise-ships.com | small-cruise-ships.com