



The Small Cruise Ship Collection

www.small-cruise-ships.com



small-cruise-ships.com

info@small-cruise-ships.com

BRITISH ELEGANCE: CITIES AND SEA SMALL SHIP CRUISE

Charming traditions and cinematic landscapes promise a royal break on England's southern coast. Immerse yourself in a picture-perfect scenery of sandy beaches, cottages and pretty towns.



ITINERARY

Days 1 - 2 Individual travel arrangements to cruise departure point Kiel/Germany, departure 17.00 hrs & Evening passage through the Kiel Canal/Germany

The Kiel Canal is like a ribbon cutting through the landscapes of Schleswig-Holstein and linking the North Sea to the Baltic Sea between Brunsbüttel and Kiel. At just under 100 km (62 mi.) long, the canal is the busiest man-made waterway in the world and cuts up to 900 km (560 mi.) off shipping routes around Denmark. Opened in 1895 and originally known as the Kaiser



The Small Cruise Ship Collection

www.small-cruise-ships.com

01432 507 280 (within UK)

info@small-cruise-ships.com | small-cruise-ships.com



The Small Cruise Ship Collection

www.small-cruise-ships.com

small-cruise-ships.com

info@small-cruise-ships.com

Wilhelm Canal, the canal makes its way past little villages, idyllic meadows and extensive pasture land. The two locks are masterpieces of engineering and have also been in operation since 1895, protecting the canal from changing water levels caused by the tides or by the winds off the North Sea and Baltic Sea.

Day 3 Great Yarmouth/England/Great Britain, 05.30 – 19.00 hrs

For more than two centuries, Great Yarmouth on the English east coast has been a popular seaside resort. The wide sandy beaches and the traditional Golden Mile with its piers form the heart of the city. Pleasure Beach, numerous arcades, carousels, amusement arcades and small cafes are found here that still retain their classic seaside resort charm to this day. A special highlight is the Hippodrome Circus with its unique retractable water stage - built in 1903 and still the venue for impressive performances.

Day 4 Cowes/Isle of Wight/England/Great Britain, 13.00 – 19.00 hrs

A diamond-shaped island full of history and charm - the Isle of Wight lies off the south coast of England and attracts visitors with its unique shape and impressive nature. Once part of Hampshire, it has been independent since 1974, with Newport as its capital. The striking chalk hills stretch across the centre of the island and plunge dramatically into the sea in the west. In Cowes, one of the largest towns on the island, nature lovers meet sailing enthusiasts, as Cowes is particularly known for the Admiral's Cup. Hikers can enjoy the well-signposted trails with breathtaking views of the steep coast and imposing chalk cliffs.

Day 5 St Helier/Jersey/Channel Islands/Great Britain, 08.00 – 19.00 hrs

The Channel Island of Jersey welcomes you with a magnificent natural spectacle: rugged cliffs and smooth sandy beaches

alternate along the coast. Gorey is another place of contrasts: the small fishing village is enchanting with its colourful houses dominated by the impressive Mont Orgueil Castle. Relics and mysteries of the medieval castle and a Mediterranean atmosphere in its picturesque bays - Jersey is a wonderful place for hikes and panoramic views.

Day 6 Saint Peter Port/Guernsey/Channel Islands/Great Britain, 07.00 – 19.00 hrs

Guernsey, the pearl of the Channel Islands, is an inviting place with its breathtaking cliffs, hidden bays, picturesque hilly interior and interesting history. Its natural landscapes inspired the famous painter, Renoir, and the author Victor Hugo also lived here for a while. The gardens around Saint Peter Port, the island capital and the prettiest little town in the British Channel Islands, would be the perfect subject for an impressionist painting. Experience this Mediterranean-like place for yourself - a fascinating labyrinth of terraces and hidden gardens is just waiting to be discovered. Castle Cornet has been a landmark of Saint Peter Port since the Middle Ages: explore this mystical fortress or simply enjoy the peace and quiet on a spectacular cliff path.

Day 7 Torquay/England/Great Britain, 08.00 – 18.00 hrs

The capital of the "English Riviera" is located on the south coast of England: Torquay. The coast stretches picturesquely for around 30 km (18.6 mi.) between Exmouth and Dartmouth and is known for its magnificent gardens and parks. Torquay became famous as a resort town as early as the 19th century and later gained notoriety as the birthplace of crime writer Agatha Christie. Today, Torquay attracts beachgoers and water sports enthusiasts alike. The palm-lined promenade is perfect for strolls, and the South Devon Coast Path is ideal for hikes with

The Small Cruise Ship Collection

www.small-cruise-ships.com

01432 507 280 (within UK)

info@small-cruise-ships.com | small-cruise-ships.com



The Small Cruise Ship Collection

www.small-cruise-ships.com

small-cruise-ships.com

info@small-cruise-ships.com

magnificent views of the azure sea, hidden bays and rolling hills.

Day 8 Falmouth/England/Great Britain, 08.00 - 18.00 hrs

Named after the River Fal, Falmouth was already an important port in the 17th century and is now a popular fishing and holiday destination. With Bronze Age stone circles, holy wells, romantic manor houses and quaint pubs, it offers a cinematic backdrop in the heart of the Cornish countryside. The Gulf Stream ensures the region has a mild, subtropical climate, which is reflected in the lush vegetation. Particularly appealing places to explore include Bodmin Moor, the surrounding beaches and picturesque bays and the Coastal Path - at 430 km (267 mi.) long, one of the most beautiful coastal paths in Europe.

Day 9 Fowey/England/Great Britain, 08.00 - 18.00 hrs

Plymouth looks back on an eventful past: it was from here that the Mayflower set sail for the New World in 1620. Today, this city on the south coast of Devon combines its maritime past with modern architecture, such as the futuristic National Marine Aquarium, and a lively waterfront with restaurants and shops. The historic Barbican district is lined with old warehouses, cosy pubs and cafes, while the elegant Royal William Victualling Yard, the former provisions depot for the Devonport naval base, is the perfect place for a stroll. Towering above it all is the green hill of The Hoe, with the iconic Smeaton's Tower, offering stunning views across the bay and Plymouth Sound.

Day 10 Portsmouth/England/Great Britain, 8.00 - 19.00 hrs

Portsmouth on the south coast of England in the county of Hampshire has a seafaring history stretching back over 800 years. The city has been an important marine base in England since the Middle Ages and today it is a symbol of maritime

tradition - visitors to the Royal Marines Museum can learn some interesting facts about its eventful history. After the Second World War, many historic buildings, including both cathedrals, were lovingly restored. The Spinnaker Tower in the harbour dominates the city's skyline: at 170 m (558 ft) tall, the tower offers amazing views over the bay and has been a proud landmark of the port city since it was opened in 2005. Portsmouth is also your starting point for exciting excursions* to London.

Day 11 Dover/England/Great Britain, 08.00 - 21.00 hrs

The striking white cliffs of Dover rise up to 106 m (347 ft) above the deep-blue waves - with their bright limestone visible from afar, they have always been considered a symbol of the region. Dover itself is a coastal town in the county of Kent and one of the most important ferry ports in Great Britain. Only about two hours from London, it is a popular starting point for exploring the British capital: the metropolis of contrasts is a lively mosaic of history and modernity, culture and culinary indulgence, inviting visitors to explore its many sights.

Day 12 Relaxation at sea

Day 13 Hamburg/Germany, arrival 07.00 hrs Individual travel arrangements from cruise arrival point

Please Note:

* The shore activities are not included in the cruise price and are in the planning stage. Subject to change.

The Small Cruise Ship Collection
www.small-cruise-ships.com

01432 507 280 (within UK)

info@small-cruise-ships.com | small-cruise-ships.com



The Small Cruise Ship Collection

www.small-cruise-ships.com



small-cruise-ships.com

info@small-cruise-ships.com

YOUR SHIP: EUROPA

YOUR SHIP: Europa

VESSEL TYPE:

LENGTH:

PASSENGER CAPACITY:

BUILT/REFURBISHED:

enhancements have introduced updated fitness and wellness concepts for an even more elevated onboard experience. Blending sophistication, comfort, and flexibility, MS EUROPA delivers a truly premium voyage to destinations

Extensive space for a maximum of 400 guests A crew-to-guest ratio of almost one to one Outside suites only, most with a veranda Five restaurants for the ultimate in culinary indulgence - including THE GLOBE by three-star chef Kevin Fehling Top-class entertainment: experience international artists and experts live on board EUROPA Refresh: new fitness and wellness concepts for even more well-being MS EUROPA is an award-winning luxury cruise ship renowned for setting global standards in refined small-ship cruising. Accommodating a maximum of just 400 guests, the ship offers an intimate and highly personalised experience, supported by an almost one-to-one crew-to-guest ratio. Designed around the concept of casual luxury, EUROPA combines spacious surroundings, attentive service, and elegant all-suite accommodation, with all suites featuring ocean views and most offering private verandas. Onboard, guests can enjoy five exceptional restaurants, including fine dining concepts created in collaboration with acclaimed chefs, alongside world-class entertainment, wellness facilities, and thoughtfully curated enrichment experiences. The ship's smaller size allows access to unique itineraries and exclusive ports beyond the reach of larger vessels, while recent EUROPA Refresh



worldwide.



The Small Cruise Ship Collection

www.small-cruise-ships.com

01432 507 280 (within UK)

info@small-cruise-ships.com | small-cruise-ships.com



The Small Cruise Ship Collection

www.small-cruise-ships.com



small-cruise-ships.com

info@small-cruise-ships.com

INSIDE YOUR SHIP

Penthouse Deluxe Suite



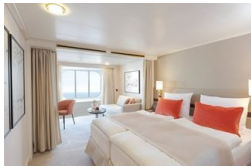
Penthouse Grand Suite



SPA Suite



Suite with panorama window



Veranda Suite Cat. 4-5

Veranda Suite Cat. 6-7



The Small Cruise Ship Collection

www.small-cruise-ships.com

01432 507 280 (within UK)

info@small-cruise-ships.com | small-cruise-ships.com



The Small Cruise Ship Collection

www.small-cruise-ships.com



small-cruise-ships.com

info@small-cruise-ships.com

PRICING

30-Aug-2028 to 11-Sep-2028

Suite with panorama window	£5215 GBP pp
Veranda Suite Cat. 4-5	£6675 GBP pp
Veranda Suite Cat. 6-7	£8649 GBP pp
SPA Suite	£9345 GBP pp
Penthouse Deluxe Suite	£14895 GBP pp
Penthouse Grand Suite	£23615 GBP pp



The Small Cruise Ship Collection

www.small-cruise-ships.com

01432 507 280 (within UK)

info@small-cruise-ships.com | small-cruise-ships.com