



THE BLUE AEGEAN & FIERY SICILY - ITALY & GREECE SAILING CRUISE

Embark on an enchanting 11-day cruise through the dreamy Greek islands and the fiery landscapes of Mount Etna in Sicily. Explore the ancient ruins of Mycenae and immerse yourself in the picturesque villages and sandy bays of the lush Ionic isles. Discover the charm of Corfu, visit Empress Sissi's Achilleion Palace, and delve into Sicily's rich cultural heritage, exploring Ortigia's ancient ruins and Noto's Baroque churches. Finally, experience the romantic beauty of Taormina, with its volcanic panorama, flower-covered stairs, and stunning views of the sea. This cruise promises a perfect blend of history, natural beauty, and cultural immersion, creating an unforgettable journey through the Greek islands and the fiery landscapes of Sicily.



ITINERARY

DAY 1, Athens (Piraeus)/Greece

Departure 07.00 pm Climbing the rigging, untying ropes, setting sails - today is all about sailing. The First Officer will provide deeper insights into the fascinating world of a tall ship.

DAY 2, Nauplio/Peloponnese



The Small Cruise Ship Collection

www.small-cruise-ships.com

small-cruise-ships.com

info@small-cruise-ships.com

Arrival 08.00 am, Departure 01.30 pm The old town of Nafplion has a picturesque peninsula setting and three Venetian fortresses guard the pretty town. In ancient times, the excavation site of Mycenae, a UNESCO World Heritage Site, was one of the most important towns in Greece. Its legendary king, Agamemnon, has a large role in Homer's Iliad. The palace grounds were surrounded by a cyclopean stone wall. Now you can only gain entrance through the famous Lion Gate. In Epidaurus, also protected by UNESCO, the impressive 14,000-seat theatre is one of the most important buildings in this archaeological site.

DAY 3, Day beneath full sails

Spend the day sunbathing, enjoy the fresh wind breeze, and relax into the day!

DAY 4, Fiscardo/Kefalonia

Arrival 01.30 pm, Departure 06.00 pm

DAY 5, Paxos/Ionian Islands

Arrival 01.30 pm, Departure 11.00 pm

DAY 6, Kerkyra/Corfu

Arrival 08.00 am, Departure 01.30 pm Greeks, Romans,

Venetians and Ottomans were former rulers of the island, which rivalled the trading powers of Venice and Dubrovnik in its medieval heyday. The rich cultural heritage of the picturesque old town of Kerkyra is protected by UNESCO. Island life unfolds against a seemingly aristocratic backdrop. At the end of the 19th century, when Corfu was a Mediterranean destination where the aristocracy and moneyed classes longed to go, the Empress "Sisi" of Austria also discovered the island. She had an old Venetian villa renovated for herself and this became her Achilleion - named after her favourite hero, the legendary Greek Achilles.

DAY 7, Day beneath full sails

Enjoy fitness, cosmetics, massage or sun and sea with a good book in the deck chair. This day beneath full sails gives you all the options for your perfect personal wellness program

DAY 8, Syracuse/Sicily

Arrival 08.00 am, Departure 06.00 pm The municipal area of Syracuse boasts relics from cultural history going back more than three millennia. In ancient times, the city was the most powerful in the known world and was famed for its splendour. The island of Ortigia, now a UNESCO World Heritage Site, was where Syracuse began its rise as an ancient city. The huge cathedral is at the heart of the old town, magnificent palaces line the Piazza and wide promenades invite you to take a stroll. The archaeological park brings Greek and Roman history back to life. Yet Syracuse exudes southern Italian charm, with washing drying outside the windows.



DAY 9, Taormina (Naxos)/Sicily

Please Note:

Arrival 07.00 am, Departure 02.00 pm Taormina is perched on a rock with a majestic view over the sea. In the 19th century, this small town had already developed into a dream destination for well-heeled travellers and artists. The town's fascination lies in its elegance, the many ancient buildings, the stunningly beautiful coastline, the mild climate, and the view over the silhouette of Etna. Europe's largest volcano is over 3,000 meters (9,843 foot) high, has four summit craters and around 400 subsidiary craters, and is covered with snow almost all year round. In ancient times it was considered the seat of the gods, but nowadays large sections of it are a nature reserve.

Itineraries are subject to change.

DAY 10, Day beneath full sails

Spend the day sunbathing, enjoy the fresh wind breeze, and relax into the day!

DAY 11, Naples/Italy

Arrival 08.00 am Naples rises from the sea around a huge bay and extends up into the hills like an amphitheatre. From the Castello Sant' Elmo on the Vomero you can enjoy a fantastic view over the sea of houses, the port and the Gulf. The pretty center of this chaotic Campanian city is the old town, designated a UNESCO World Heritage Site, with its huge fortresses, dignified churches and monasteries, splendid squares and palaces, and maze of winding streets.

The Small Cruise Ship Collection

www.small-cruise-ships.com

small-cruise-ships.com

info@small-cruise-ships.com

YOUR SHIP: SEA CLOUD II

YOUR SHIP:	Sea Cloud II
VESSEL TYPE:	Tall Ship (Sailing)
LENGTH:	105 metres
PASSENGER CAPACITY:	96
BUILT/REFURBISHED:	2001

Launched in 2001, Sea Cloud II is a stunning vessel, built along traditional lines, but offering deluxe accommodation. She combines timeless elegance of sailing ships of the past with the highest safety standards and the luxurious comfort of modern cruise ships. Just like her legendary sister ship Sea Cloud, the 29,600 square feet of sails is set by hand which is a truly magical sight. Built to accommodate 96 passengers in five star luxury, she offers a range of beautifully appointed suites and cabins which are furnished with great style. All accommodations have outside views and the bathrooms, in light marble, are unusually spacious and extremely comfortable. The finest, carefully chosen fabrics, combined with leather, rattan and other materials, brass and gold, precious woods and marble together create an impressive ensemble. No expense has been spared to create a sympathetic ambience in both the accommodations and public areas and this is reflected throughout the vessel. Public areas include an elegant lounge, library, fitness centre, boutique, lido bar and hospital. The single sitting dining room is airy and modern and the quality of the cuisine and service will be to the highest of standards, as one would expect on a Sea Cloud cruise. Relax on the Lido deck and experience the natural

grandeur of travelling under sail, rekindling memories of a



bygone age.

The Small Cruise
Ship Collection
www.small-cruise-ships.com

01432 507 280 (within UK)

info@small-cruise-ships.com | small-cruise-ships.com

The Small Cruise Ship Collection

www.small-cruise-ships.com

small-cruise-ships.com

info@small-cruise-ships.com

INSIDE YOUR SHIP



Please note that category F cabins have one lower and one upper berth bed

Key
 Cat A Cat B Cat C
 Cat D Cat E Cat F

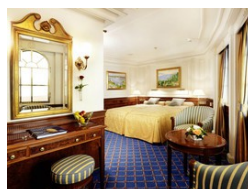
Category A. From



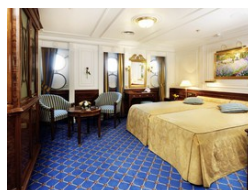
Category B. From



Category C. From



Category D. From



Category E. From

Category F Upper/Lower Beds. From

The Small Cruise Ship Collection
 www.small-cruise-ships.com

01432 507 280 (within UK)

info@small-cruise-ships.com | small-cruise-ships.com



The Small Cruise Ship Collection

www.small-cruise-ships.com

small-cruise-ships.com

info@small-cruise-ships.com

PRICING

31-Jul-2024 to 10-Aug-2024

GTY Double Cabin. From	£4632 GBP pp
Category F Upper/Lower Beds. From	£5027 GBP pp
Category E. From	£5855 GBP pp
Category D. From	£6552 GBP pp
Category C. From	£6923 GBP pp
Category B. From	£8231 GBP pp
Category A. From	£9160 GBP pp



The Small Cruise Ship Collection

www.small-cruise-ships.com

01432 507 280 (within UK)

info@small-cruise-ships.com | small-cruise-ships.com