



## BEAUTIFUL GREENS OF THE CANARY ISLANDS

This voyage blends extended sailing passages with striking landfalls along the Atlantic edge. Departing Casablanca, the route crosses open waters to Agadir, gateway to historic Berber towns and traditional souks, before continuing west toward the Canary Islands. Lanzarote reveals a dramatic dialogue between art and nature, where Cesar Manrique's vision is embedded in volcanic terrain, followed by Tenerife's powerful landscapes shaped by Mount Teide. The journey concludes in Gran Canaria, completing a passage defined by ocean sailing, North African culture, and raw volcanic islands.



### ITINERARY

Day 1 Las Palmas, Gran Canaria

With its black volcano almost 6,561 feet high and endless white beaches along the coastline, the island of Gran Canaria displays a huge variety of landscapes. It's a "continent in miniature" with rugged rock formations, dense pine forests, dry valleys and reservoirs inland, lush vegetation in the north, shimmering dune landscapes in the south and weirdly shaped cliffs in the west. Almost half the island has been registered by UNESCO as a



## The Small Cruise Ship Collection

[www.small-cruise-ships.com](http://www.small-cruise-ships.com)

[small-cruise-ships.com](http://small-cruise-ships.com)

[info@small-cruise-ships.com](mailto:info@small-cruise-ships.com)

Biosphere Reserve. The capital, Las Palmas, is no less colorful, with its port and history stretching back 500 years. The showpiece of this historic old town is the magnificent Santa Ana Cathedral.

### Day 2 Day under full sails

Climbing the rigging, untying ropes, setting sails - today is all about sailing. Time to lean back and relax in the deck chair and watch the passionate crew hoisting the sails by hand.

### Day 3 San Sebastián, La Gomera

Many people consider La Gomera to be the most wildly romantic island in the Canaries. Rugged gorges, craggy hillsides, fertile valleys and evergreen cloud forests characterize the landscape. The Garajonay National Park, a UNESCO World Heritage Site, embraces the whole central mountain area and is an unusual little spot. Ancient bay trees, heather bushes as high as trees and tall ferns form a cloud forest where moss hangs from the trees and clings to gnarled branches - a truly mystical natural wonder that has existed for millions of years.

### Day 4 Santa Cruz, La Palma

The combination of small size and great height make the lush green volcanic island of La Palma one of the steepest islands on earth. The white houses in the island's capital shine from wooded mountain slopes and the old town center of Santa Cruz is covered by a preservation order - principally because of its Canarian houses with their artistically decorated wooden balconies. The Caldera de Taburiente towers above the north of the island. With a diameter of 5.6 miles and surrounded by

crater walls more than 6,561 feet high, it is one of the world's largest volcanic craters. Behind the caldera is the cloud forest of Los Tilos. The Biosphere Reserve was extended by UNESCO to cover the whole island of La Palma.

### Day 5 Puerto de la Estaca, El Hierro

Volcanic activity has created a wildly romantic and varied natural landscape. It's a land of black lava desert and strange rock formations with oddly shaped, wind-defying juniper trees in the south, orchards, vineyards, fig and almond groves in the north, lush green meadows and pastures in the high plateaus, and perhaps the most beautiful pine forests in the archipelago. El Hierro, the smallest and newest of the Canary Islands, is almost completely edged with steeply sloping, rugged cliffs and the spray from the surging ocean. UNESCO has designated it a Biosphere Reserve.

### Day 6 Santa Cruz, Tenerife

Santa Cruz is the perfect starting point if you want to discover Tenerife's diverse mix of beach, nature, and avant-garde culture. The capital and port city in the northeast of the island is not only decked out with historic buildings but also features a lively art scene and spectacular modern architecture by Calatrava or Herzog, and De Meuron. Santa Cruz is also not far from other highlights in the north. For example, the lively colonial town of La Laguna, with its impressive mansions, or quaint Taganana in the Agana Landscape Park, which has retained the charm of an old mountain village.

### Day 7 Santa Cruz, Tenerife





Santa Cruz is the perfect starting point if you want to discover Tenerife's diverse mix of beach, nature, and avant-garde culture. The capital and port city in the northeast of the island is not only decked out with historic buildings but also features a lively art scene and spectacular modern architecture by Calatrava or Herzog, and De Meuron. Santa Cruz is also not far from other highlights in the north. For example, the lively colonial town of La Laguna, with its impressive mansions, or quaint Taganana in the Agana Landscape Park, which has retained the charm of an old mountain village.

#### Day 8 Las Palmas, Gran Canaria

With its black volcano almost 6,561 feet high and endless white beaches along the coastline, the island of Gran Canaria displays a huge variety of landscapes. It's a "continent in miniature" with rugged rock formations, dense pine forests, dry valleys and reservoirs inland, lush vegetation in the north, shimmering dune landscapes in the south and weirdly shaped cliffs in the west. Almost half the island has been registered by UNESCO as a Biosphere Reserve. The capital, Las Palmas, is no less colorful, with its port and history stretching back 500 years. The showpiece of this historic old town is the magnificent Santa Ana Cathedral.

#### Please note:

Itineraries are subject to change.

# The Small Cruise Ship Collection

www.small-cruise-ships.com

small-cruise-ships.com

info@small-cruise-ships.com

## YOUR SHIP: SEA CLOUD II

<b>YOUR SHIP:</b>	<b>Sea Cloud II</b>
<b>VESSEL TYPE:</b>	<b>Tall Ship (Sailing)</b>
<b>LENGTH:</b>	<b>105 metres</b>
<b>PASSENGER CAPACITY:</b>	<b>96</b>
<b>BUILT/REFURBISHED:</b>	<b>2001</b>

Launched in 2001, Sea Cloud II is a stunning vessel, built along traditional lines, but offering deluxe accommodation. She combines timeless elegance of sailing ships of the past with the highest safety standards and the luxurious comfort of modern cruise ships. Just like her legendary sister ship Sea Cloud, the 29,600 square feet of sails is set by hand which is a truly magical sight. Built to accommodate 96 passengers in five star luxury, she offers a range of beautifully appointed suites and cabins which are furnished with great style. All accommodations have outside views and the bathrooms, in light marble, are unusually spacious and extremely comfortable. The finest, carefully chosen fabrics, combined with leather, rattan and other materials, brass and gold, precious woods and marble together create an impressive ensemble. No expense has been spared to create a sympathetic ambience in both the accommodations and public areas and this is reflected throughout the vessel. Public areas include an elegant lounge, library, fitness centre, boutique, lido bar and hospital. The single sitting dining room is airy and modern and the quality of the cuisine and service will be to the highest of standards, as one would expect on a Sea Cloud cruise. Relax on the Lido deck and experience the natural

grandeur of travelling under sail, rekindling memories of a



bygone age.

The Small Cruise Ship Collection  
www.small-cruise-ships.com

01432 507 280 (within UK)

info@small-cruise-ships.com | small-cruise-ships.com



# The Small Cruise Ship Collection

www.small-cruise-ships.com

small-cruise-ships.com

info@small-cruise-ships.com

## INSIDE YOUR SHIP



Please note that category F cabins have one lower and one upper berth bed

Key  
 Cat A Cat B Cat C  
 Cat D Cat E Cat F

Category A. From



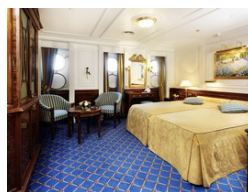
Category B. From



Category C. From



Category D. From



Category E. From

Category F Upper/Lower Beds. From



## The Small Cruise Ship Collection

[www.small-cruise-ships.com](http://www.small-cruise-ships.com)

[small-cruise-ships.com](http://small-cruise-ships.com)

[info@small-cruise-ships.com](mailto:info@small-cruise-ships.com)

## PRICING

05-Nov-2027 to 12-Nov-2027

Category F Upper/Lower Beds. From	£3839 GBP pp
Category E. From	£4435 GBP pp
Category D. From	£5175 GBP pp
Category C. From	£5319 GBP pp
Category B. From	£5909 GBP pp
Category A. From	£6799 GBP pp



The Small Cruise  
Ship Collection

[www.small-cruise-ships.com](http://www.small-cruise-ships.com)

01432 507 280 (within UK)

[info@small-cruise-ships.com](mailto:info@small-cruise-ships.com) | [small-cruise-ships.com](http://small-cruise-ships.com)