



## BAJA CALIFORNIA'S WHALES & SEALIFE

Where Desert Meets the Sea. Stocked with supplies and a bountiful sense of adventure, our Baja cruise follows Steinbeck's path into the protected waters of Cousteau's "world's aquarium." Active exploration and a menagerie of wildlife await you! You have plenty of opportunities to view your favorite whales throughout your trip from grey whales to whales sharks, visiting them in their natural habitat or watching from the bow. Later in the season? No problem, there are opportunities for orca and mobula watching, with some of our favorite "flying tortillas" in the Sea of Cortez.



### ITINERARY

Day 1 San Jose del Cabo / La Paz - Embarkation

Bienvenidos! You will be met at the Los Cabos International Airport in San Jose del Cabo and transferred to our hospitality area. Joined by your expedition team, an overland orientation transfer to La Paz acquaints you with the dramatic Baja landscape and the week that lies ahead. The captain and crew welcome you aboard just in time for a cocktail and dinner with your new mates. What adventures await? Gray whale sightings? Whale Sharks? Dolphins? Fun on land and sea is a



## The Small Cruise Ship Collection

[www.small-cruise-ships.com](http://www.small-cruise-ships.com)

[small-cruise-ships.com](http://small-cruise-ships.com)

[info@small-cruise-ships.com](mailto:info@small-cruise-ships.com)

guarantee.(D)

### Day 2 Isla San Francisco

Adventure in a playground of steep red bluffs and sweeping desert beach. Don some flippers for a snorkel among colorful sea life, put on your walking shoes for an exploratory romp along the ridge, grab a paddle and kayak, hop on a paddle board, or relax on the beach with the sand between your toes. The rugged beauty of the island makes it an ideal spot for escapades. (BLD)

### Day 3 Bahia Agua Verde

At Bahia Agua Verde, clear waters are bordered by sparse craggy mountains hemmed in green. Explore the coast by small skiff looking for birds, seals, dolphins, and whales of all kinds; visit with a local ranchero and his family; and take to the canyons and mountains on a mule ride and experience the "real Baja." Scenic vistas, outstanding exploration, excellent birding, and unmatched camaraderie - the day is done. (BLD)

### Day 4 Isla Coronado / Loreto Town

Enjoy the beautiful beaches of Isla Coronado this morning - snorkel, kayak, or take a skiff tour. Watch for frigate birds and blue footed boobies in the air and dolphins and sea lions on the water - the waters here are so crystal clear you won't want to come back to the boat! It's worth it though - after lunch, set out to explore Loreto town. Founded in the 17th century by Jesuit missionaries, the downtown area features no fewer than seven historical monuments, including the Mission of our Lady or Loreto, the starting point of the Camino Real. Finish a day full of the best of nature and culture with a nightcap under the stars. (BLD)

### Day 5 Marine Life Search

Mother Nature is your guide today. Take your adventurous side and your binoculars in search of the largest baleen whales in the world. The Sea of Cortes is home to fin, blue, and sperm whales, and the dolphin pods number in the hundreds. If the gray whales have arrived on Baja's west coast (mid-January - early-March)--migrating more than 12,000 miles to calve in Bahia Magdalena--you'll drive across the peninsula for a panga ride to observe these mammals and their babies in the lagoon. Mid-March through April are your best chance to see whale sharks near La Paz and in other parts of the Sea of Cortes. Later in the season, we have resident whales and dolphins in our sights. Whichever the day brings, there's also a chance to head into the Sierra La Giganta Mountains for a tour of the crown jewel of Baja's historic missions, San Javier; time for a brief exploration in magical Loreto; or more water play and hikes. Bring it on! (BLD)

### Day 6 Los Islotes / Isla Partida

At Los Islotes--a steep craggy seamount leaping straight from the sea--slip into a wet suit for a snorkel with curious, agile young sea lion pups. At Isla Partida, get set for water play (kayaking, snorkeling, and stand up paddle boarding are all on the menu) and island hikes along desert beaches or into rocky arroyos. Or, kick back with a beach party--complete with a cool drink and sun-soaked lounge. (BLD)

### Day 7 Isla San Jose, Evaristo, or Nopolo

Tuck into a secluded cove surrounded by long fingers of red rock and a golden beach. Spend your last full day enjoying the feel of warm sand under your feet on a beach walk, investigate nooks and crannies in the rocks by kayak, or explore a little further afield on a guided hike. Celebrate your week at tonight's special Farewell Dinner with an entertaining slideshow by your

The Small Cruise Ship Collection  
[www.small-cruise-ships.com](http://www.small-cruise-ships.com)

01432 507 280 (within UK)

[info@small-cruise-ships.com](mailto:info@small-cruise-ships.com) | [small-cruise-ships.com](http://small-cruise-ships.com)





expedition team. (BLD)

Day 8 San Jose del Cabo - La Paz - Disembark

After breakfast, it's "adios" La Paz, as you transfer back to San Jose del Cabo for your flight or UnCruise hotel stay. (B)

**Please Note:**

Itineraries are guidelines; variations in itinerary and the order of days may occur to maximize your experience.



The Small Cruise  
Ship Collection

[www.small-cruise-ships.com](http://www.small-cruise-ships.com)



[small-cruise-ships.com](http://small-cruise-ships.com)

[info@small-cruise-ships.com](mailto:info@small-cruise-ships.com)

## YOUR SHIP: SAFARI VOYAGER

**YOUR SHIP:**

**Safari Voyager**

**VESSEL TYPE:**

**LENGTH:**

**PASSENGER CAPACITY:**

**BUILT/REFURBISHED:**

The 64-guest Safari Voyager offers personal comforts, exclusivity and upscale accommodations. Guests will enjoy breathtaking views from four public decks and a window-lined lounge offering an uncompromised 270 degree view with comfortable seating for all 64 guests. Other features of the yacht include an elegant dining room and library. Generously-sized staterooms feature wide panoramic windows; individually controlled air conditioning; generous storage and closet space; and large private bath with shower. There are six stateroom categories aboard the Safari Voyager: Single; Master; Commander; Captain; Admiral; and Jr. Commodore Suite. Depending on the category, singles, doubles, or triples can be accommodated. Common to all staterooms are: iPod docking station and view windows.



The Small Cruise  
Ship Collection

[www.small-cruise-ships.com](http://www.small-cruise-ships.com)

**01432 507 280** (within UK)

[info@small-cruise-ships.com](mailto:info@small-cruise-ships.com) | [small-cruise-ships.com](http://small-cruise-ships.com)



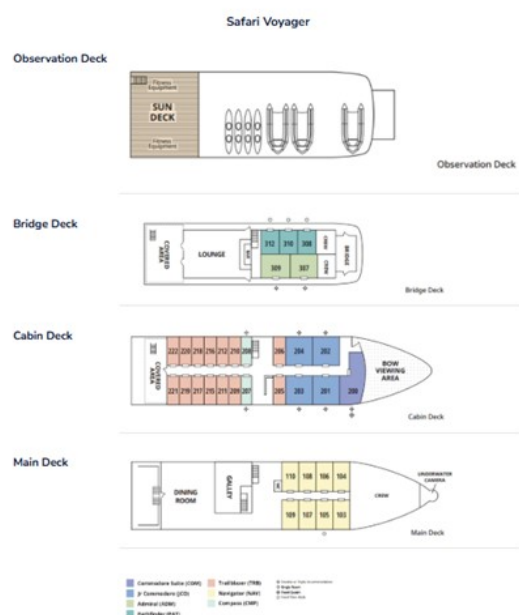
# The Small Cruise Ship Collection

www.small-cruise-ships.com

small-cruise-ships.com

info@small-cruise-ships.com

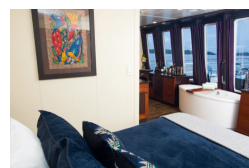
## INSIDE YOUR SHIP



Admiral Cabin



Commodore Suite



Jr. Commodore Suite

Navigator Cabin



Pathfinder Cabin

Single Cabin





## The Small Cruise Ship Collection

[www.small-cruise-ships.com](http://www.small-cruise-ships.com)



[small-cruise-ships.com](http://small-cruise-ships.com)

[info@small-cruise-ships.com](mailto:info@small-cruise-ships.com)

## PRICING

### 07-Feb-2026 to 14-Feb-2026

Single Cabin	£8778 GBP pp
Commodore Suite	£9163 GBP pp
Admiral Cabin	£6468 GBP pp
Trailblazer Cabin	£5467 GBP pp
Navigator Cabin	£5005 GBP pp
Jr. Commodore Suite	£7238 GBP pp
Pathfinder Cabin	£5929 GBP pp

### 14-Feb-2026 to 21-Feb-2026

Commodore Suite	£9163 GBP pp
Single Cabin	£8778 GBP pp
Jr. Commodore Suite	£7238 GBP pp
Admiral Cabin	£6468 GBP pp
Navigator Cabin	£5005 GBP pp
Pathfinder Cabin	£5929 GBP pp
Trailblazer Cabin	£5467 GBP pp

### 21-Feb-2026 to 28-Feb-2026

Pathfinder Cabin	£5929 GBP pp
Commodore Suite	£9163 GBP pp
Trailblazer Cabin	£5467 GBP pp
Jr. Commodore Suite	£7238 GBP pp
Navigator Cabin	£5005 GBP pp
Admiral Cabin	£6468 GBP pp
Single Cabin	£8778 GBP pp

### 28-Feb-2026 to 07-Mar-2026

Jr. Commodore Suite	£7238 GBP pp
Navigator Cabin	£5005 GBP pp
Admiral Cabin	£6468 GBP pp
Trailblazer Cabin	£5467 GBP pp
Pathfinder Cabin	£5929 GBP pp
Single Cabin	£8778 GBP pp
Commodore Suite	£9163 GBP pp

### 07-Mar-2026 to 14-Mar-2026

Commodore Suite	£9163 GBP pp
Admiral Cabin	£6468 GBP pp
Trailblazer Cabin	£5467 GBP pp
Navigator Cabin	£5005 GBP pp
Single Cabin	£8778 GBP pp
Jr. Commodore Suite	£7238 GBP pp
Pathfinder Cabin	£5929 GBP pp



The Small Cruise Ship Collection

[www.small-cruise-ships.com](http://www.small-cruise-ships.com)

01432 507 280 (within UK)

[info@small-cruise-ships.com](mailto:info@small-cruise-ships.com) | [small-cruise-ships.com](http://small-cruise-ships.com)





## The Small Cruise Ship Collection

[www.small-cruise-ships.com](http://www.small-cruise-ships.com)



[small-cruise-ships.com](http://small-cruise-ships.com)

[info@small-cruise-ships.com](mailto:info@small-cruise-ships.com)

## PRICING

### 14-Mar-2026 to 21-Mar-2026

Admiral Cabin	£6468 GBP pp
Jr. Commodore Suite	£7238 GBP pp
Pathfinder Cabin	£5929 GBP pp
Navigator Cabin	£5005 GBP pp
Single Cabin	£8778 GBP pp
Commodore Suite	£9163 GBP pp
Trailblazer Cabin	£5467 GBP pp

### 21-Mar-2026 to 28-Mar-2026

Commodore Suite	£9163 GBP pp
Admiral Cabin	£6468 GBP pp
Navigator Cabin	£5005 GBP pp
Jr. Commodore Suite	£7238 GBP pp
Pathfinder Cabin	£5929 GBP pp
Trailblazer Cabin	£5467 GBP pp
Single Cabin	£8778 GBP pp

### 28-Mar-2026 to 04-Apr-2026

Admiral Cabin	£6468 GBP pp
Single Cabin	£8778 GBP pp
Jr. Commodore Suite	£7238 GBP pp
Trailblazer Cabin	£5467 GBP pp
Navigator Cabin	£5005 GBP pp
Commodore Suite	£9163 GBP pp
Pathfinder Cabin	£5929 GBP pp

### 23-Jan-2027 to 30-Jan-2027

Pathfinder Cabin	£5929 GBP pp
Jr. Commodore Suite	£7238 GBP pp
Single Cabin	£8778 GBP pp
Admiral Cabin	£6468 GBP pp
Trailblazer Cabin	£5467 GBP pp
Commodore Suite	£9163 GBP pp
Navigator Cabin	£5005 GBP pp

### 30-Jan-2027 to 06-Feb-2027

Commodore Suite	£9163 GBP pp
Trailblazer Cabin	£5467 GBP pp
Admiral Cabin	£6468 GBP pp
Pathfinder Cabin	£5929 GBP pp
Single Cabin	£8778 GBP pp
Jr. Commodore Suite	£7238 GBP pp
Navigator Cabin	£5005 GBP pp



The Small Cruise Ship Collection

[www.small-cruise-ships.com](http://www.small-cruise-ships.com)

01432 507 280 (within UK)

[info@small-cruise-ships.com](mailto:info@small-cruise-ships.com) | [small-cruise-ships.com](http://small-cruise-ships.com)



## The Small Cruise Ship Collection

[www.small-cruise-ships.com](http://www.small-cruise-ships.com)



[small-cruise-ships.com](http://small-cruise-ships.com)

[info@small-cruise-ships.com](mailto:info@small-cruise-ships.com)

## PRICING

### 06-Feb-2027 to 13-Feb-2027

Single Cabin	£8778 GBP pp
Pathfinder Cabin	£5929 GBP pp
Trailblazer Cabin	£5467 GBP pp
Commodore Suite	£9163 GBP pp
Navigator Cabin	£5005 GBP pp
Jr. Commodore Suite	£7238 GBP pp
Admiral Cabin	£6468 GBP pp

### 13-Feb-2027 to 20-Feb-2027

Trailblazer Cabin	£5467 GBP pp
Navigator Cabin	£5005 GBP pp
Commodore Suite	£9163 GBP pp
Jr. Commodore Suite	£7238 GBP pp
Admiral Cabin	£6468 GBP pp
Single Cabin	£8778 GBP pp
Pathfinder Cabin	£5929 GBP pp

### 20-Feb-2027 to 27-Feb-2027

Pathfinder Cabin	£5929 GBP pp
Commodore Suite	£9163 GBP pp
Admiral Cabin	£6468 GBP pp
Jr. Commodore Suite	£7238 GBP pp
Navigator Cabin	£5005 GBP pp
Trailblazer Cabin	£5467 GBP pp
Single Cabin	£8778 GBP pp

### 27-Feb-2027 to 06-Mar-2027

Commodore Suite	£9163 GBP pp
Pathfinder Cabin	£5929 GBP pp
Trailblazer Cabin	£5467 GBP pp
Jr. Commodore Suite	£7238 GBP pp
Navigator Cabin	£5005 GBP pp
Single Cabin	£8778 GBP pp
Admiral Cabin	£6468 GBP pp

### 06-Mar-2027 to 13-Mar-2027

Pathfinder Cabin	£5929 GBP pp
Commodore Suite	£9163 GBP pp
Single Cabin	£8778 GBP pp
Admiral Cabin	£6468 GBP pp
Trailblazer Cabin	£5467 GBP pp
Jr. Commodore Suite	£7238 GBP pp
Navigator Cabin	£5005 GBP pp



The Small Cruise Ship Collection

[www.small-cruise-ships.com](http://www.small-cruise-ships.com)

01432 507 280 (within UK)

[info@small-cruise-ships.com](mailto:info@small-cruise-ships.com) | [small-cruise-ships.com](http://small-cruise-ships.com)





## The Small Cruise Ship Collection

[www.small-cruise-ships.com](http://www.small-cruise-ships.com)



[small-cruise-ships.com](http://small-cruise-ships.com)

[info@small-cruise-ships.com](mailto:info@small-cruise-ships.com)

## PRICING

### 13-Mar-2027 to 20-Mar-2027

Single Cabin	£8778 GBP pp
Commodore Suite	£9163 GBP pp
Pathfinder Cabin	£5929 GBP pp
Jr. Commodore Suite	£7238 GBP pp
Trailblazer Cabin	£5467 GBP pp
Admiral Cabin	£6468 GBP pp
Navigator Cabin	£5005 GBP pp

### ADDITIONAL CHARGES:

Port fees 495 USD pp

### 20-Mar-2027 to 27-Mar-2027

Commodore Suite	£9163 GBP pp
Jr. Commodore Suite	£7238 GBP pp
Pathfinder Cabin	£5929 GBP pp
Navigator Cabin	£5005 GBP pp
Single Cabin	£8778 GBP pp
Trailblazer Cabin	£5467 GBP pp
Admiral Cabin	£6468 GBP pp

### 27-Mar-2027 to 03-Apr-2027

Commodore Suite	£9163 GBP pp
Navigator Cabin	£5005 GBP pp
Admiral Cabin	£6468 GBP pp
Single Cabin	£8778 GBP pp
Trailblazer Cabin	£5467 GBP pp
Pathfinder Cabin	£5929 GBP pp
Jr. Commodore Suite	£7238 GBP pp



The Small Cruise Ship Collection

[www.small-cruise-ships.com](http://www.small-cruise-ships.com)

01432 507 280 (within UK)

[info@small-cruise-ships.com](mailto:info@small-cruise-ships.com) | [small-cruise-ships.com](http://small-cruise-ships.com)