

The Small Cruise Ship Collection

www.small-cruise-ships.com

small-cruise-ships.com

info@small-cruise-ships.com

AUTHENTIC JAPAN - LUXURY CRUISE

Discover traditional Japan, forged by millennia of traditions, where nature and the sacred become one. Among the trade winds, the dreamlike landscapes of lush green hills, mystical mountains and ancestral temples nestling in preserved nature will fill you with wonder. Toba, Shingu, Himeji, Miyajima ... the historic cities reveal their imperial secrets throughout the different ports of call, while Zen gardens and peaceful temples celebrate Shinto heritage. This journey into the heart of the Japanese soul will also immerse you in the moving history of Nagasaki and Hiroshima, which are now some of Japan's most relaxed and fascinating destinations.



ITINERARY

Day 1 - Busan

With around four million inhabitants, **Busan** is the second largest metropolis on South Korea, after Seoul. This dynamic harbour city, located in the south-east, surrounded by the warm waters of the Sea of Japan, benefits from a mild, pleasant climate. You'll find delightful simply to stroll around the **lively streets** and explore the city's outstanding cultural heritage of art galleries, museums, and Buddhist sites, such as the **Haedong Yonggungsa temple**, which elegantly sits on the waterfront. Rich too in magnificent beaches and superlative natural landscapes, Busan's peaceful atmosphere will win you over, as will its inhabitants, whom you'll have the pleasure of

The Small Cruise Ship Collection
www.small-cruise-ships.com

01432 507 280 (within UK)

info@small-cruise-ships.com | small-cruise-ships.com



The Small Cruise Ship Collection

www.small-cruise-ships.com

small-cruise-ships.com

info@small-cruise-ships.com

meeting.

Day 2- Nagasaki

Located on the north-west coast of Kyushu, **Nagasaki** will impress you by its rich heritage. Despite the destruction in 1945, you can visit several ancient sites, including the beautiful 19th-century **Catholic Church of Oura** and its garden, the **sanctuary of Suwa Shrine** or several Buddhist temples. A visit to the **Atomic Bomb Museum** gives you insight into the extent of the damage caused by the nuclear attack. Close by, a walk in the **Memorial Peace Park** leads you to a collection of objets d'art offered as a gift from Japan to the world.

Day 3 - Karatsu

Karatsu Bay is edged with long sandy beaches and a huge pine forest that was planted over 350 years ago to protect the coast from the winds and tides of the Genkai Sea. From the top of the donjon of **Karatsu Castle** or **Mount Kagami**, you will be able to admire magnificent panoramas. In the north of the Higashi-Matsuura Peninsula, the waves have eroded the lava plateau and carved a magnificent natural site, the **seven Nanatsugama Caves**, out of the basalt. The city of Karatsu is famous for the quality of its **pottery**, which is influenced by the craftsmanship of nearby Korea. Very fine pieces are displayed in the city's galleries and at Karatsu Castle, alongside magnificent **samurai armour**.

Day 4 - Kagoshima

The seaside city of Kagoshima, at the south of Kyushu Island, is best known for Sakurajima, an **active volcano** that faces Kinko Bay. A visit to this busy metropolis will remind you just how much the volcano is part of the inhabitants' everyday life: in

the wake of the almost daily eruptions, a delicate layer of ash settles on everything. The top of a buried **_torii_** (traditional Japanese gate) measuring three metres that was 'swallowed up' by a giant lava flow in 1914 can still be seen. The **power of nature** will send a shiver down your spine.

Day 5 - Aburatsu

Located on the south-east coast of Kyushu island in scenic Miyazaki Prefecture, **Aburatsu** is a natural port, linked to the town of **Nichinan**. Because of its position Aburatsu has become a major maritime passage into the numerous regions of Asia. It has a serene atmosphere, typical to southern Japan, with a gentle landscape of rolling hills. On the **outskirts of Nichinan**, you can visit Obi Castle, dating from the Edo period. Slightly to the north of the old town, the **Udo-Jingu shrine** also **features among the region's wonders**.

Day 6 - Beppu, Oita

A favourite destination for the Japanese, **Beppu** is now famous throughout the Japanese archipelago thanks to its onsen - volcanic hot springs in which people immerse themselves to relax with family or friends. From Beppu, you will set off to discover a lush, peaceful valley in which sit 60 majestic stone Buddhas carved out of the cliff face between the 12th and 14th centuries. Exuding a soothing air of serenity, the Mangetsuji site seems to have drifted off to sleep in the heart of a dense bamboo forest surrounded by rice fields. Recognised as a National Treasure of Japan, this set of sacred sculptures offers travellers a unique, wonderful experience.

Day 7 - Miyajima Island and Hiroshima

At the heart of the Inland Sea, **Miyajima**, the "island sanctuary" will reveal its treasures. In the background you will

The Small Cruise Ship Collection
www.small-cruise-ships.com

01432 507 280 (within UK)

info@small-cruise-ships.com | small-cruise-ships.com



The Small Cruise Ship Collection

www.small-cruise-ships.com

small-cruise-ships.com

info@small-cruise-ships.com

see the ****Shinto Grand Sanctuary**** , whose entrance is guarded by a magnificent vermilion "Torii". Considered to be one of the most beautiful sites in the Japanese islands, you will be transported by the unique character and the serenity of this sacred site.

Visiting ****Hiroshima**** is a moving experience. The town spreads along ****Honshu Island**** , along the inside coasts of Seto. While firmly focused on the future, Hiroshima doesn't forget its past, and a visit to the ****Peace Memorial Park**** and ****Genbaku Dome**** is a must. You'll enjoy the city's ****modern, cosmopolitan atmosphere and effervescent nightlife**** just as much as the peaceful stillness of its natural parkland areas such as splendid Shukkei-en, the town's historic garden.

Day 8 - Itozaki

Jewels of the heart of Hiroshima Prefecture, ****Itozaki**** invites travelers to a timeless escape. Bordered by the Seto Inland Sea, it captivates with its landscapes blending the gentle shimmer of its waters and the silent majesty of its mountains. Itozaki is a journey into the soul of Japan, a haven where time stands still. The Japanese city will serve as the starting point for discovering, just a short distance away, the historic Onomichi, renowned for its nearly twenty temples and shrines.

Day 9 - Takamatsu

A former fortified city, ruled over by the Matsudaira clan from the Tamamo castle with its seawater moats, the city is home to one of the most beautiful classic gardens in Japan, the Ritsurin. It was created by the barons of the city at the start of the Edo period, during which time gardening became a profession in its own right. Its landscape incorporates Mount Shiun in the background, an example of what is known as the shakkei

technique, which uses the surrounding landscapes to increase the beauty of the gardens.

Day 10 - Himeji

You may get the impression that you've already seen ****Himeji Castle**** , as it has been featured many times on the big screen. The feudal edifice seems to spread its wings over the town like a white heron in fact, its nickname is the castle of the white heron . Originally started in the 15th century and then rebuilt in the 17th-century, it is a UNESCO World Heritage site. At its feet lies the gorgeous ****Koko-en garden****, which has nine different ****gardens**** designed to flourish in each of the four seasons.

Day 11 - Shingu

To the south-west of the Japanese archipelago, ****Shingu**** is a port town in the ****Kansai**** region. Founded in 1933, it belongs to the ****peninsula of Kii**** , the country's largest. Take a trip around the Kumano Sanzan religious complex dedicated to three sacred mountains and home to two ****Shinto temples, Kumano Hongu Taisha**** and Kumano Hayatama Taisha. The latter features the famous ****sacred nagi tree**** , said to have been planted around 1159. Pilgrims flock to these two sanctuaries that feature on UNESCO's World Heritage list. Hop on a boat and journey to the ****Dorokyo Gorge**** , a natural beauty spot carved out by the emerald waters of the Kumano river.

Day 12 - Toba

Toba is a coastal city located in Japan's Mie Prefecture, on the shores of the Pacific Ocean. Situated in the ****Ise-Shima National Park**** , Toba has given its name to majestic bay sheltering a string of small islands, famous for the beauty of

The Small Cruise Ship Collection
www.small-cruise-ships.com

01432 507 280 (within UK)

info@small-cruise-ships.com | small-cruise-ships.com



The Small Cruise
Ship Collection

www.small-cruise-ships.com

small-cruise-ships.com

info@small-cruise-ships.com

their forests and the production of **cultured pearls**. You will have the possibility of discovering the **Ise Shrine** , residence of the Imperial family and venerated by the Japanese people as the "soul of Japan".

Day 13 - Kobe

A coastal city on the **main island of Honshu** , Kobe is a vital Japanese port. You will be inspired by the **authenticity, way of life and heritage** of the capital of Hy go Prefecture, which is bordered by the sea. Its beef is internationally renowned, but there is much more to the city's attractions than this delicate speciality. As soon as you arrive, you will be welcomed by the **Kobe Port Tower**, **located, along with the Maritime Museum, in the much appreciated Meriken Park**. The **Mount Rokk National Park** is a real island of greenery in the very heart of the vibrant city. Long frequented by **Shinto monks** , then popular with the expatriates who flocked to Kobe during the second half of the 19th century, it is one of the symbols of the city.



The Small Cruise
Ship Collection

www.small-cruise-ships.com

01432 507 280 (within UK)

info@small-cruise-ships.com | small-cruise-ships.com



The Small Cruise Ship Collection

www.small-cruise-ships.com

small-cruise-ships.com

info@small-cruise-ships.com

YOUR SHIP: LE JACQUES CARTIER

YOUR SHIP: Le Jacques Cartier

VESSEL TYPE:

LENGTH:

PASSENGER CAPACITY:

BUILT/REFURBISHED:

Featuring innovative and environmentally-friendly equipment, elegantly designed staterooms, spacious suites with large windows, and lounge areas that open onto the outside, this new limited-capacity yacht boasting just 92 staterooms and suites will offer you a truly unique cruising experience. Le Jacques Cartier will embody refinement, intimacy and comfort. Aboard this ship that flies the French flag, you will experience the incomparable pleasure of an intimate cruise, with the possibility of exploring an ever-increasing range of destinations in an ethnic-chic ambiance with luxury service. Experience a luxurious setting where the accent is on authenticity and passion for travel. RESTAURANTS As it is an essential part of French culture, gastronomy will naturally have pride of place aboard this new ship. To the back of Deck 4, you will find a 260 m² panoramic restaurant which can accommodate all of our passengers in a single sitting. Designed differently to that on our other ships, this dining area, which opens onto the outside, will have a buffet of salads, desserts and cheeses at your disposal. Our discreet and attentive crew will provide table service for hot meals. In a relaxed atmosphere, an outdoor grill on Deck 3 will serve grilled meats with a variety of salads and desserts. PUBLIC AREAS Le

Jacques Cartier has many common areas that are designed and equipped to meet all of your needs while preserving the intimacy of each passenger. A 140 m² reception area includes: A reception/concierge desk, An excursions desk, The ship's administrative services, The sales office, manned by our Guest Relations Officer, Our 50 m² boutique which sells clothing, jewellery, beauty products, postcards and various accessories, Toilets accessible to passengers with reduced mobility. A new hydraulic platform with adjustable height provides: Easier boarding than on any other cruise ship, Easier Zodiac embarkation and disembarkation for expeditions, Easier access to the sea for swimming and practising various water sports such as kayaking or paddle-boarding. A pool deck offering: A pool with a panoramic view, equipped with a counter-current swimming system, A pleasant solarium, An outdoor bar and lounge with armchairs and sofas. A 200 m² main lounge which can accommodate all of our passengers to share convivial moments and to host activities organised during the day or evening. Lastly, a theatre that seats 188, equipped with: The latest sound and lighting technology, A LED wall as the stage backdrop, for the projection of high-resolution images and videos. Please click the following links to read more about Ponant and the other Ponant

The Small Cruise Ship Collection

www.small-cruise-ships.com

01432 507 280 (within UK)

info@small-cruise-ships.com | small-cruise-ships.com



The Small Cruise Ship Collection

www.small-cruise-ships.com

small-cruise-ships.com

info@small-cruise-ships.com



cruise ships.

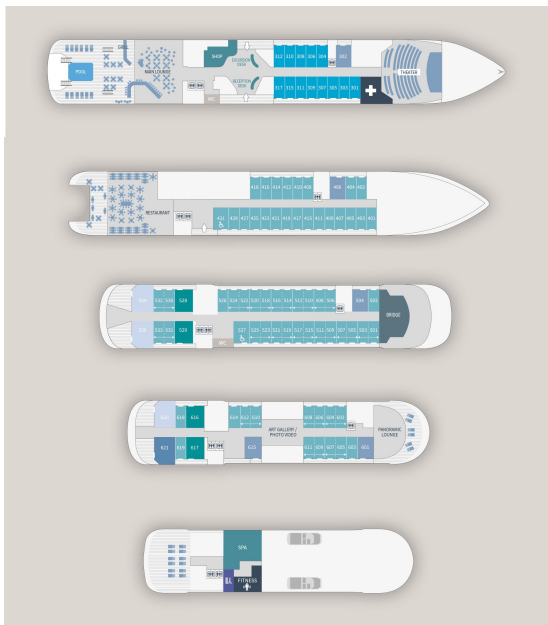
The Small Cruise Ship Collection

www.small-cruise-ships.com

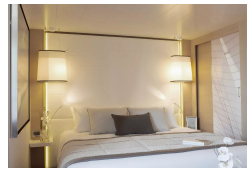
small-cruise-ships.com

info@small-cruise-ships.com

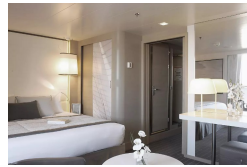
INSIDE YOUR SHIP



Deluxe Stateroom

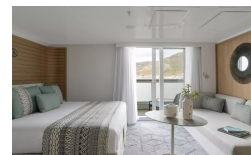
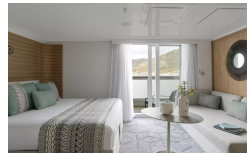


Deluxe Suite



Deluxe Suite Deck 3

Deluxe Suite Deck 4



Deluxe Suite Deck 5

Deluxe Suite Deck 6

Grand Deluxe Suite

Owner's Suite

Prestige Deck 4

Prestige Deck 5

Prestige Deck 5 Suite

Prestige Deck 6

Prestige Deck 6 Suite

Prestige Stateroom Deck 4

Prestige Stateroom Deck 5

Prestige Stateroom Deck 6

Prestige Suite Deck 5

Prestige Suite Deck 6

Privilege Suite Deck 5

Privilege Suite Deck 6

The Small Cruise Ship Collection

www.small-cruise-ships.com

small-cruise-ships.com

info@small-cruise-ships.com

PRICING

14-Mar-2027 to 26-Mar-2027

Prestige Deck 6 Suite	£26425 GBP pp
Deluxe Stateroom	£10755 GBP pp
Superior Stateroom	£9915 GBP pp
Prestige Deck 5	£12555 GBP pp
Prestige Deck 6	£13265 GBP pp
Prestige Deck 4	£11945 GBP pp
Prestige Deck 5 Suite	£25105 GBP pp
Deluxe Suite	£18525 GBP pp

26-Mar-2027 to 07-Apr-2027

Prestige Stateroom Deck 6	£12595 GBP pp
Prestige Stateroom Deck 4	£11345 GBP pp
Prestige Suite Deck 5	£23805 GBP pp
Superior Stateroom	£9415 GBP pp
Owner's Suite	£31955 GBP pp
Prestige Suite Deck 6	£25065 GBP pp
Deluxe Suite	£17585 GBP pp
Deluxe Stateroom	£10215 GBP pp
Prestige Stateroom Deck 5	£11915 GBP pp

11-Mar-2028 to 23-Mar-2028

Privilege Suite Deck 6	£21175 GBP pp
Privilege Suite Deck 5	£21175 GBP pp
Prestige Suite Deck 6	£20175 GBP pp
Prestige Suite Deck 5	£19175 GBP pp
Prestige Stateroom Deck 6	£10185 GBP pp
Prestige Stateroom Deck 5	£9635 GBP pp
Prestige Stateroom Deck 4	£9185 GBP pp
Grand Deluxe Suite	£23255 GBP pp
Owner's Suite	£34725 GBP pp
Deluxe Suite Deck 4	£14185 GBP pp
Deluxe Suite Deck 3	£14185 GBP pp
Deluxe Suite Deck 6	£14185 GBP pp
Deluxe Suite Deck 5	£14185 GBP pp
Deluxe Stateroom	£8275 GBP pp

The Small Cruise Ship Collection

www.small-cruise-ships.com

small-cruise-ships.com

info@small-cruise-ships.com

PRICING

23-Mar-2028 to 04-Apr-2028

Owner's Suite	£34725 GBP pp
Privilege Suite Deck 6	£21175 GBP pp
Prestige Stateroom Deck 6	£10185 GBP pp
Prestige Stateroom Deck 5	£9635 GBP pp
Prestige Stateroom Deck 4	£9185 GBP pp
Prestige Suite Deck 5	£19175 GBP pp
Deluxe Suite Deck 6	£14185 GBP pp
Deluxe Suite Deck 5	£14185 GBP pp
Deluxe Suite Deck 4	£14185 GBP pp
Deluxe Stateroom	£8275 GBP pp
Deluxe Suite Deck 3	£14185 GBP pp
Privilege Suite Deck 5	£21175 GBP pp
Grand Deluxe Suite	£23255 GBP pp
Prestige Suite Deck 6	£20175 GBP pp

04-Apr-2028 to 16-Apr-2028

Privilege Suite Deck 6	£21175 GBP pp
Deluxe Suite Deck 3	£14185 GBP pp
Grand Deluxe Suite	£23255 GBP pp
Deluxe Suite Deck 6	£14185 GBP pp
Prestige Suite Deck 6	£20175 GBP pp
Privilege Suite Deck 5	£21175 GBP pp
Prestige Suite Deck 5	£19175 GBP pp
Prestige Stateroom Deck 6	£10185 GBP pp
Prestige Stateroom Deck 5	£9635 GBP pp
Deluxe Suite Deck 5	£14185 GBP pp
Prestige Stateroom Deck 4	£9185 GBP pp
Owner's Suite	£34725 GBP pp
Deluxe Suite Deck 4	£14185 GBP pp
Deluxe Stateroom	£8275 GBP pp

ADDITIONAL CHARGES:

Port Fees 530 GBP pp