



The Small Cruise  
Ship Collection

[www.small-cruise-ships.com](http://www.small-cruise-ships.com)

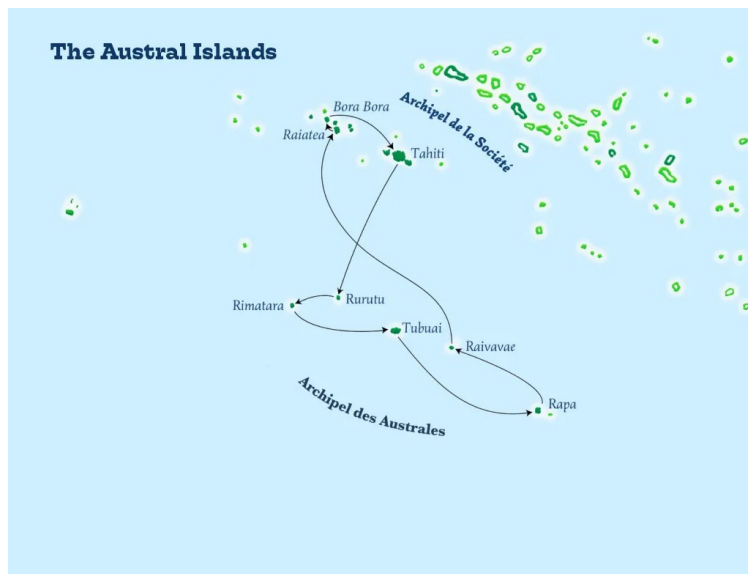


[small-cruise-ships.com](http://small-cruise-ships.com)

[info@small-cruise-ships.com](mailto:info@small-cruise-ships.com)

## AUSTRAL ISLANDS WITH RAPA SMALL SHIP CRUISE

## Cruise in the austral islands, the secret archipelago. Discovered by Europeans in the 18th Century, the Australs are located 373 miles (600 km) south of Tahiti's capital city. The archipelago is made of seven islands, five of which are inhabited - Rimatara, Rurutu, Tubuai, Raivavae and Rapa - and four of which are accessible by air. 6,800 people live in the Austral islands, an off the beaten track archipelago of untouched and mysterious land where white sand beaches meet the intense blue of the lagoons. Breath-taking landscapes, from sheer mountains to valleys and high plains, these islands are famous for their farming activities. Several archaeological remains witness to a well organised, pre-European community of rich cultural and religious practices. The cliffs and caves of the Austral Islands were ancient burial grounds and now provide a platform from which visitors can watch Humpback Whales frolic in the water just offshore as they come here from August to October to give birth. Passengers on board Aranoa will take a guided tour of the island's colourful, picturesque villages and discover the handiwork of islanders who mainly live off their artwork. During their Polynesian cruise they will also enjoy watching fishermen, farmers and basket weavers at work and are unlikely to leave without purchasing a hat or a woven basket to remind them of their magical time in the Austral Islands.



### ITINERARY

Day 1 Departure from Tahiti (Papeete) - Moorea

####

Check-in begins at 09:00 am at the Papeete Cruise Terminal. At 12:00 pm, the Aranoa will cast off, ready to take you to Tahiti's sister island: Moorea before the Austral Islands. A journey of culture, tradition and unforgettable landscapes awaits you.

The Aranoa will arrive in Moorea at around 2:00 p.m., allowing passengers to visit and take part in a few optional activities.

At 22:00 the ship will leave the Society Islands for the Austral Islands.

The Small Cruise  
Ship Collection

[www.small-cruise-ships.com](http://www.small-cruise-ships.com)

01432 507 280 (within UK)

[info@small-cruise-ships.com](mailto:info@small-cruise-ships.com) | [small-cruise-ships.com](http://small-cruise-ships.com)



## The Small Cruise Ship Collection

[www.small-cruise-ships.com](http://www.small-cruise-ships.com)



[small-cruise-ships.com](http://small-cruise-ships.com)

[info@small-cruise-ships.com](mailto:info@small-cruise-ships.com)

### Day 2 At sea

####

A day to relax on the Pool Deck or in the comfort of our air-conditioned Salon. Or why not simply enjoy the view of the South Pacific Ocean as we return to the Society Islands. Lectures on the company's culture and history will give you a complete overview of the values upheld by the company. True to the Polynesian experience, the entertainment remains as traditional as ever: initiation to Polynesian songs and Tahitian dance, not forgetting our shows and dances under the stars.

### Day 3 Rimatara, Austral Islands

####

The Aranoa disembarks at the "Taanini" quay. A small circular volcanic plateau, Rimatara, the last island in the archipelago to be discovered in the 19th century by Captain Samuel Pinder Henry, has preserved its ancient traditions, including its own dialect. It is home to an endemic bird, the stunning and colorful Lori de Kuhl, the "Ura", also found in the Cook Islands. After passing through a purification smoke, an ancient welcoming tradition, explore the main villages of Amaru, Anapoto and Motuaura by mini-bus or truck. In the ancient Amaru cemetery, facing the sea, lies the entire lineage of kings and queens who ruled the island of Rimatara. Legend has it that if you make a face in front of the royal tomb, you'll be disfigured for the rest of your life. A barbecue will be served on Motuaura beach. Its crystal-clear waters are ideal for snorkelling and diving. Covered with tarodera and fruit trees, Rimatara is a flowering garden with a freshwater well. The discovery of the red parakeet "Ura" is offered as an optional activity (registration at reception).

### Day 4 Rurutu, Austral Islands

####

Rurutu, one of the two largest raised atolls in French Polynesia, is unique for its geological structure, which is surprisingly unusual in the South Pacific. Basalt and limestone cliffs dotted with caves where islanders once lived, a volcanic interior with lush tropical jungle, white sand beaches and magnificent bays offer breathtaking panoramas. Rurutu is known throughout Polynesia for the exceptional quality of its basketry, such as magnificent hats, bags and baskets or carpets made from pandanus leaves and other natural materials. With the Aranui at anchor off Rurutu, after lunch on board, passengers disembark in barges at the "Moerai" quay, where they are greeted with a performance of local songs. Enjoy some free time in the peaceful village of Moerai.

### Day 5 Tubuai, Austral Islands

####

Arriving by barge at the Baie Sanglante landing stage, passengers are greeted at the town hall, wreaths of flowers around their necks, to the sound of local music. You can watch demonstrations of the arts and crafts of pandanus leaf weaving and shell necklace making, both unique to the island. The island's fertile soil and cooler climate are ideal for growing cabbage, lettuce and potatoes. The day's activities include a truck tour of the island's cultural sites, the 'PO TUI TUI' marae, Fort George, the first refuge of the Bounty mutineers from July to September 1789, and Bloody Bay, witness to the fighting between the islanders and the mutineers. Lunch on board. The beach at Bloody Bay invites you to dive and explore with a mask and snorkel. Certified diving is available as an optional activity



01432 507 280 (within UK)

[info@small-cruise-ships.com](mailto:info@small-cruise-ships.com) | [small-cruise-ships.com](http://small-cruise-ships.com)



## The Small Cruise Ship Collection

[www.small-cruise-ships.com](http://www.small-cruise-ships.com)



[small-cruise-ships.com](http://small-cruise-ships.com)

[info@small-cruise-ships.com](mailto:info@small-cruise-ships.com)

(register at reception).

Day 6 Raivavae, Austral Islands

####

Raivavae, nicknamed the "Bora Bora of yesteryear", seduces with its motu, preserved traditions and authentic charm. From the quay at Rairua, passengers aboard the Aranoa are greeted with music and wreaths of flowers. A tour of the island reveals the "Smiling Tiki", hidden marae and a stoup tasting. A traditional buffet is served in Rairua, followed by a stroll through the village. The following day, hikers will explore Heirani Point, while others will discover the "Pupu" shell necklaces. Optional: the idyllic motu Vaiamanu and the coral garden.

Day 7 Raivavae, Austral islands

####

Take advantage of the remaining time to stroll through the village or discover its lush lagoon with a mask and snorkel. A visit to Mount Hiro is optional (please register at reception).

Day 8 Rapa, Austral Islands

####

As we approach Rapa, accessible only by sea, the captain can announce: "Welcome to Rapa. Next stop Antarctica". Rapa, Easter Island's little sister, is the southernmost and most isolated of the Austral Islands. It is shaped like a crescent, with a coastline cut by 12 very deep bays. It has a temperate climate, with no coral reefs or coconut palms, and non-tropical fruits and vegetables: apples, peaches, nectarines... The Aranoa docks at Ahurei. Passengers are greeted, wreaths of flowers

around their necks, to the typical sounds and rhythms of Rapa. Trucks await you, heading for the cultural center. Here you'll discover how the "mamas" make local crafts: hats and baskets from reed (a fragile material) and bamboo crafts. On Rapa, we suggest a 2h30 hike to Fort Morango Uta.

Day 9 Tubuai, Austral Islands

####

Tubuai is the most populated island in the Austral Islands, with a splendid lagoon and a rich heritage. Welcomed at Bloody Bay with music and wreaths, passengers set off on a truck to discover the Vaitauarii marae, Fort George - refuge of the Bounty mutineers - and the sites of their battles. Barbecues, swimming and optional diving punctuate this day of history and nature.

Day 10 At sea

####

A day to relax on the Pool Deck or in the comfort of our air-conditioned Salon. Or why not simply enjoy the view of the South Pacific Ocean as we return to the Society Islands. Lectures on the company's culture and history will give you a complete overview of the values upheld by the company. True to the Polynesian experience, the entertainment remains as traditional as ever: initiation to Polynesian songs and Tahitian dance, not forgetting our shows and dances under the stars.

Day 11 Raiatea, Society islands

####

The cradle of Polynesian civilization, Raiatea - formerly Hawai'i - was the starting point for the great migrations to Hawaii, New



The Small Cruise Ship Collection

[www.small-cruise-ships.com](http://www.small-cruise-ships.com)

01432 507 280 (within UK)

[info@small-cruise-ships.com](mailto:info@small-cruise-ships.com) | [small-cruise-ships.com](http://small-cruise-ships.com)



## The Small Cruise Ship Collection

[www.small-cruise-ships.com](http://www.small-cruise-ships.com)



[small-cruise-ships.com](http://small-cruise-ships.com)

[info@small-cruise-ships.com](mailto:info@small-cruise-ships.com)

Zealand and Easter Island. On the quayside, you'll be greeted by the sound of to'ere, the tiara in your ear. By bus, explore the Taputapuatea marae, a UNESCO-listed sacred site. Optional: pirogue trip down the Faaroa River or certified diving. In the afternoon, stroll through Uturoa's boutiques after lunch on board.

Day 12 Bora Bora, Society islands

####

As you arrive in Bora Bora's world-famous lagoon of opalescent blues and greens, you will be greeted by the majestic "Mount Otemannu", the highest peak on the island. You can enjoy a day at the beach and a barbecue on a private Motu surrounded by crystal clear waters, the "Motu Tapu". You can also choose from a variety of option excursions at an additional cost: scuba diving, boat and motorized canoe tours of the lagoon, swimming with sharks and rays! Bora Bora was an American military outpost during World War II and remnants of the war such as cannons and bunkers can be seen on a 4X4 tour. Departure in the evening for Papeete.

Day 13 Return to Tahiti (Papeete)

####

After days rich in encounters, grandiose landscapes and shared traditions, the Aranoa returns to the port of Papeete. Between engraved memories and faded necklaces, hearts remain full of emotions and stories to tell.

Please note:

Itineraries are subject to change.



**01432 507 280** (within UK)

[info@small-cruise-ships.com](mailto:info@small-cruise-ships.com) | [small-cruise-ships.com](http://small-cruise-ships.com)



# The Small Cruise Ship Collection

[www.small-cruise-ships.com](http://www.small-cruise-ships.com)



[small-cruise-ships.com](http://small-cruise-ships.com)

[info@small-cruise-ships.com](mailto:info@small-cruise-ships.com)

## YOUR SHIP: ARANOA

**YOUR SHIP:** Aranoa

**VESSEL TYPE:**

**LENGTH:**

**PASSENGER CAPACITY:**

**BUILT/REFURBISHED:**

Launching in 2027, Aranoa marks an exciting new chapter for Aranui Cruises, extending its legacy of authentic and sustainable Polynesian voyages. This innovative mixed passenger-freighter vessel will journey through the remote Austral Islands--Rimatara, Rurutu, Tubuai, Raivavae, and Rapa--offering guests an intimate connection to some of French Polynesia's most unspoiled destinations. With capacity for just 198 passengers across 93 cabins, including 62 with private balconies, Aranoa promises a boutique cruising experience complemented by Polynesian warmth and hospitality. Onboard amenities include two restaurants, two bars, whirlpools, a spa and tattoo area, a boutique, and a fitness centre, ensuring both comfort and cultural immersion as guests explore the lush mountains, turquoise lagoons, and white-sand beaches of the Australs. True to Aranui's pioneering spirit, Aranoa combines tradition with forward-thinking sustainability. The ship features a diesel-electric propulsion system with azimuth thrusters, an eco-friendly antifouling hull coating, and technology designed to reduce noise and emissions while enhancing fuel efficiency. Continuing the company's 40-year commitment to inclusive tourism, Aranoa will work closely with local communities to

promote inter-island trade and cultural exchange, creating meaningful connections between travellers and the islands. Blending discovery, comfort, and responsibility, Aranoa invites guests to experience a slower, more authentic Polynesia--where every voyage



tells a story.

The Small Cruise Ship Collection

[www.small-cruise-ships.com](http://www.small-cruise-ships.com)

01432 507 280 (within UK)

[info@small-cruise-ships.com](mailto:info@small-cruise-ships.com) | [small-cruise-ships.com](http://small-cruise-ships.com)



# The Small Cruise Ship Collection

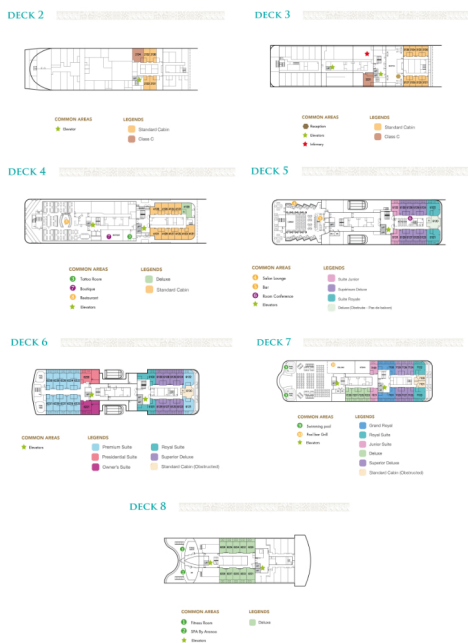
www.small-cruise-ships.com



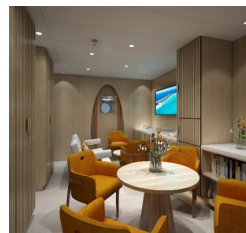
small-cruise-ships.com

info@small-cruise-ships.com

## INSIDE YOUR SHIP



### Class C - Dormitory



### Deluxe



Deluxe (Obstructed View)

Grand Royal Suite

Junior Suite

Owner Suite

Premium Suite

Presidential Suite

Royal Suite

Stateroom

Stateroom (Obstructed View)

Superior Deluxe



# The Small Cruise Ship Collection

www.small-cruise-ships.com



small-cruise-ships.com

info@small-cruise-ships.com

## PRICING

### 06-Mar-2027 to 18-Mar-2027

Class C - Dormitory	£3405 GBP pp
Stateroom (Obstructed View)	£4989 GBP pp
Stateroom	£5235 GBP pp
Deluxe (Obstructed View)	£6365 GBP pp
Deluxe	£6685 GBP pp
Superior Deluxe	£7209 GBP pp
Junior Suite	£7225 GBP pp
Premium Suite	£7415 GBP pp
Royal Suite	£8089 GBP pp
Grand Royal Suite	£9749 GBP pp
Owner Suite	£10219 GBP pp
Presidential Suite	£10219 GBP pp

### 15-May-2027 to 27-May-2027

Class C - Dormitory	£3405 GBP pp
Stateroom (Obstructed View)	£4989 GBP pp
Stateroom	£5235 GBP pp
Deluxe (Obstructed View)	£6365 GBP pp
Deluxe	£6685 GBP pp
Superior Deluxe	£7209 GBP pp
Junior Suite	£7225 GBP pp
Premium Suite	£7415 GBP pp
Royal Suite	£8089 GBP pp
Grand Royal Suite	£9749 GBP pp
Owner Suite	£10219 GBP pp
Presidential Suite	£10219 GBP pp

### 19-Jun-2027 to 01-Jul-2027

Class C - Dormitory	£3405 GBP pp
Stateroom (Obstructed View)	£4989 GBP pp
Stateroom	£5235 GBP pp
Deluxe (Obstructed View)	£6365 GBP pp
Deluxe	£6685 GBP pp
Superior Deluxe	£7209 GBP pp
Junior Suite	£7225 GBP pp
Premium Suite	£7415 GBP pp
Royal Suite	£8089 GBP pp
Grand Royal Suite	£9749 GBP pp
Owner Suite	£10219 GBP pp
Presidential Suite	£10219 GBP pp



01432 507 280 (within UK)

info@small-cruise-ships.com | small-cruise-ships.com



# The Small Cruise Ship Collection

www.small-cruise-ships.com



small-cruise-ships.com

info@small-cruise-ships.com

## PRICING

### 07-Aug-2027 to 19-Aug-2027

Class C - Dormitory	£3405 GBP pp
Stateroom (Obstructed View)	£4989 GBP pp
Stateroom	£5235 GBP pp
Deluxe (Obstructed View)	£6365 GBP pp
Deluxe	£6685 GBP pp
Superior Deluxe	£7209 GBP pp
Junior Suite	£7225 GBP pp
Premium Suite	£7415 GBP pp
Royal Suite	£8089 GBP pp
Grand Royal Suite	£9749 GBP pp
Owner Suite	£10219 GBP pp
Presidential Suite	£10219 GBP pp

### 09-Oct-2027 to 21-Oct-2027

Class C - Dormitory	£3405 GBP pp
Stateroom (Obstructed View)	£4989 GBP pp
Stateroom	£5235 GBP pp
Deluxe (Obstructed View)	£6365 GBP pp
Deluxe	£6685 GBP pp
Superior Deluxe	£7209 GBP pp
Junior Suite	£7225 GBP pp
Premium Suite	£7415 GBP pp
Royal Suite	£8089 GBP pp
Grand Royal Suite	£9749 GBP pp
Owner Suite	£10219 GBP pp
Presidential Suite	£10219 GBP pp

### 27-Nov-2027 to 09-Dec-2027

Class C - Dormitory	£3405 GBP pp
Stateroom (Obstructed View)	£4989 GBP pp
Stateroom	£5235 GBP pp
Deluxe (Obstructed View)	£6365 GBP pp
Deluxe	£6685 GBP pp
Superior Deluxe	£7209 GBP pp
Junior Suite	£7225 GBP pp
Premium Suite	£7415 GBP pp
Royal Suite	£8089 GBP pp
Grand Royal Suite	£9749 GBP pp
Presidential Suite	£10219 GBP pp
Owner Suite	£10219 GBP pp