



The Small Cruise
Ship Collection

www.small-cruise-ships.com

small-cruise-ships.com

info@small-cruise-ships.com

**ATLANTIC ODYSSEY, EXCL. ANTARCTIC
PENINSULA - VISIT SOME OF THE REMOTEST
ISLANDS IN THE WORLD**

Our Atlantic Odyssey visits some of the most remote islands in the world, following the migratory paths of birds, including Arctic terns and long-tailed skuas, while whales, dolphins, and flying fish leap, crest, and glide above the waves of the high seas.

The Small Cruise
Ship Collection

www.small-cruise-ships.com

01432 507 280 (within UK)

info@small-cruise-ships.com | small-cruise-ships.com

The Small Cruise Ship Collection

www.small-cruise-ships.com

small-cruise-ships.com

info@small-cruise-ships.com



ITINERARY

Day 1: End of the world, start of a journey

Your voyage begins where the world drops off: Ushuaia, Argentina, said to be the southernmost city on the planet, located on the far southern tip of South America. Starting in the afternoon, we embark from this small resort town on Tierra del Fuego (nicknamed "The End of the World") and sail the mountainous Beagle Channel for the rest of the evening.

Day 2 - 4: Sea route to South Georgia

Today we are en route to South Georgia. After passing the Antarctic Convergence, which is a natural boundary formed when north-flowing cold waters collide with warmer sub-Antarctic waters, we enter the circum-Antarctic upwelling zone. Not only does the marine life change, the bird life changes, too: A variety of albatrosses and petrels show up, along with Cape pigeons and southern fulmars.

Day 5 - 7: South Georgia sights

Our aim today is to visit some of the world's top king penguin rookeries. This time of year you have a good chance of seeing

these animals nesting on eggs, with their chicks nearby. The rookeries are sometimes overflowing, with penguins traveling to and from the beach.

Possible visits in this region include:

Salisbury Plain, St. Andrews Bay, Gold Harbour - Here you can see not only the massive king penguin colony, but also elephant seals and limitless fur seal pups playing in the surf.

Grytviken - We also have the opportunity to check out this abandoned whaling station, where king penguins walk the streets and elephant seals lie around like they own the place - because they basically do! You might also see the South Georgia Museum as well as Shackleton's grave here.

Cooper Bay - This is a fine place for a Zodiac cruise, and this bay also houses a rookery of macaroni penguins. King penguins, pintails, and giant petrels may also appear here.

Moltke Harbour - Located in Royal Bay, this scenic spot gives you the chance to see the huge king penguin colony that lives here.

Day 8 - 12: Once more to the sea

A pleasant tailwind often accompanies the vessel through the westerlies, and on both sides of the Antarctic Convergence, you might see large numbers of Antarctic and sub-Antarctic seabirds.

Day 13: The quest continues at the great Gough Island

Today we plan to approach Gough Island for a Zodiac cruise in Quest Bay, if the weather permits. Here you might see northern

The Small Cruise Ship Collection
www.small-cruise-ships.com

01432 507 280 (within UK)

info@small-cruise-ships.com | small-cruise-ships.com



The Small Cruise Ship Collection

www.small-cruise-ships.com

small-cruise-ships.com

info@small-cruise-ships.com

rockhopper penguins and sub-Antarctic fur seals. In previous years, it has been possible for us to circumnavigate most of Gough Island's 33-mile circumference, taking in this area's splendid scenery and abundant wildlife.

Day 14 - 17: Tristan da Cunha and all the pretty birds

The remote islands of Tristan da Cunha are famed for their plentiful bird populations, which include rockhopper penguins, several species of albatross, petrels, skuas, terns, and many others. Our goal during this stage of our voyage is to visit the small settlement on the west side of the main island, but we might also land at Seal Bay on the south side of Tristan da Cunha or at Sandy Point on the east side.

In these stunning locations, you could encounter such exotic wildlife as yellow-nosed albatrosses and sub-Antarctic fur seals, all while exploring a rarely visited spot. We also intend to land at Nightingale Island and Inaccessible Island, both of which offer great views of beautiful seabirds ranging from yellow-nosed albatrosses to brown noddies.

Two days are reserved at Tristan da Cunha in case of bad weather, but please remember that nature determines our itineraries here: Since beginning the Atlantic Odyssey cruise in 1998, adverse weather led to the cancellation of 35% of Tristan da Cunha landings. If we have to divert for safety reasons, we will find good alternatives.

Day 18 - 21: Subtropical seas and seabirds

Seabirds and dolphins indigenous to this region often follow the vessel.

Day 22 - 24: St. Highlights of Saint Helena

After we land at Jamestown on Saint Helena Island, you will have the opportunity to enjoy the area's local culture, pleasant climate, and endemic bird life. You can pay a visit to Longwood House, where Napoleon died in exile; walk the 699-step Jacob's Ladder, if you're feeling ambitious; or snorkel the shallows offshore, seeing multitudes of tropical and subtropical fish.

Please note: You have the option to disembark and fly home from Jamestown, if flights are available. In the evening, we will depart for Praia, Cape Verde, where you can also disembark. Make sure to book voyage PLA34-27 if you want to fly out from Praia.

Please note:

Itineraries are subject to change.

The Small Cruise Ship Collection

www.small-cruise-ships.com

01432 507 280 (within UK)

info@small-cruise-ships.com | small-cruise-ships.com

The Small Cruise Ship Collection

www.small-cruise-ships.com

small-cruise-ships.com

info@small-cruise-ships.com

YOUR SHIP: PLANCIUS

YOUR SHIP:	Plancius
VESSEL TYPE:	Expedition
LENGTH:	
PASSENGER CAPACITY:	
BUILT/REFURBISHED:	

M/V "Plancius" was built in 1976 as an oceanographic research vessel for the Royal Dutch Navy and was named "Hr. Ms. Tydeman". The ship sailed for the Dutch Navy until June 2004 when she was converted into an expedition cruise ship. The vessel was completely rebuilt as a 114-passenger vessel in 2009 and complies with the latest SOLAS-regulations (Safety Of Life At Sea). M/v "Plancius" is classed by Lloyd's Register in London and flies the Dutch flag. "Plancius" accommodates 114 passengers in 53 passenger cabins with private toilet and shower in 4 quadruple private cabins, 39 twin private cabins (ca. 15 square meters) and 10 twin superior cabins (ca. 21 square meters). All cabins offer lower berths (either two single beds or one queen-size bed), except for the 4 quadruple cabins (for 4 persons in 2x upper and lower beds). The vessel offers a restaurant/lecture room on deck 3 and a spacious observation lounge (with bar) on deck 5 with large windows, offering full panorama view. Plancius has large open deck spaces (with full walk-around possibilities on deck 3), giving excellent opportunities to enjoy the scenery and wildlife. She is furthermore equipped with 10 Mark V zodiacs, including 40 HP 4-stroke outboard engines and 2 gangways on the starboard

side, guaranteeing a swift zodiac operation. M/v "Plancius" is comfortable and nicely decorated, but is not a luxury vessel. Our voyages in the Arctic and Antarctic regions are and will still be primarily defined by an exploratory educational travel programme, spending as much time ashore as possible. The vessel is equipped with a diesel-electric propulsion system which reduces the noise and vibration of the engines considerably. The 3 diesel engines generate 1.230 horse-power each, giving the vessel a speed of 10 - 12 knots. The vessel is ice-strengthened and was specially built for oceanographic voyages. M/v "Plancius" is manned by 17 nautical crew, 19 hotel staff (6 chefs, 1 hotel manager, 1 steward-barman and 11 stewards / cabin cleaners), 8 expedition staff (1 expedition leader and 7 guides-lecturers)



and 1 doctor.

The Small Cruise Ship Collection

www.small-cruise-ships.com

01432 507 280 (within UK)

info@small-cruise-ships.com | small-cruise-ships.com

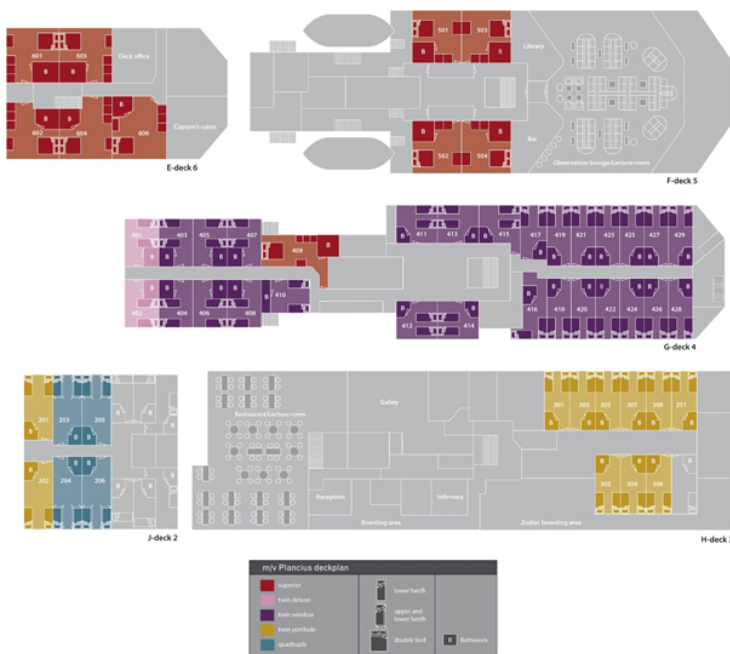
The Small Cruise Ship Collection

www.small-cruise-ships.com

small-cruise-ships.com

info@small-cruise-ships.com

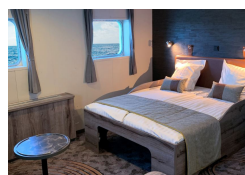
INSIDE YOUR SHIP



Quadruple Porthole



Superior



Triple Porthole



Twin Deluxe



Twin Porthole

Twin Window



The Small Cruise Ship Collection

www.small-cruise-ships.com

small-cruise-ships.com

info@small-cruise-ships.com

PRICING

04-Apr-2027 to 27-Apr-2027

Superior	£11055 GBP pp
Twin Deluxe	£10515 GBP pp
Twin Window	£9515 GBP pp
Triple Porthole	£9125 GBP pp
Quadruple Porthole	£7279 GBP pp
Twin Porthole	£9125 GBP pp

30-Mar-2028 to 22-Apr-2028

Twin Deluxe	£11555 GBP pp
Twin Window	£10395 GBP pp
Twin Porthole	£9975 GBP pp
Triple Porthole	£9125 GBP pp
Quadruple Porthole	£7935 GBP pp
Superior	£12089 GBP pp