

The Small Cruise Ship Collection

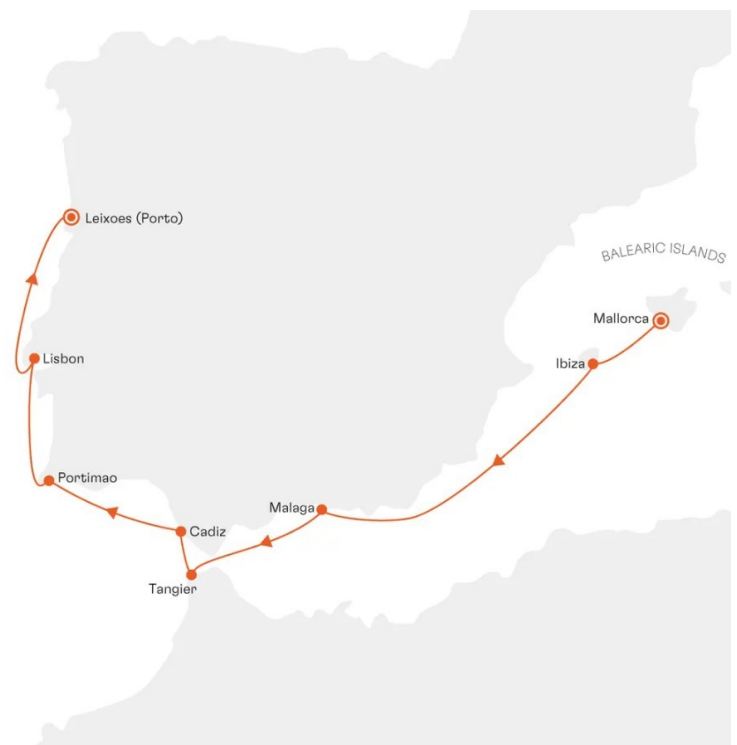
www.small-cruise-ships.com

small-cruise-ships.com

info@small-cruise-ships.com

AS IF PAINTED – IBERIAN MASTERPIECES - SPAIN & PORTUGAL CRUISE

Explore the splendour of the Iberian Peninsula, where Ibiza's nature shines in vibrant colours, while colourful mosaics adorn the palaces of Andalusia and the promenades of Portugal - and the delicacies of sun-kissed coasts tempt your taste buds.



ITINERARY

Day 1 Palma de Mallorca/Mallorca/Balearic Islands/Spain, departure 20.00 hrs

Day 2 Ibiza/Balearic Islands/Spain, 13.00 - 23.00 hrs

Ibiza, the third-largest of the Balearic Islands, is known for its blend of peaceful bays and lively party beaches. The island's capital, Ibiza Town, combines modern flair with historical elements: founded by the Phoenicians in the seventh century BC, the mighty Moorish fortified walls of Dalt Vila still dominate

The Small Cruise Ship Collection

www.small-cruise-ships.com

01432 507 280 (within UK)

info@small-cruise-ships.com | small-cruise-ships.com



The Small Cruise Ship Collection

www.small-cruise-ships.com

small-cruise-ships.com

info@small-cruise-ships.com

the townscape today and in 1999 the old town was designated a UNESCO World Heritage Site. As well as its famous nightlife, Ibiza also offers beautiful scenery like the Ses Salines Natural Park in the south of the island, which is famous for its plants and bird life that thrive in saline conditions and is also a UNESCO World Heritage Site.

Day 3 Relaxation at sea

Day 4 Malaga/Spain, 07.00 - 23.00 hrs

Andalusia's second-largest city exudes the scent of orange groves and the heat of the sun, which shines over the Bay of Malaga. The majestic Montes de Malaga mountain range is just a few kilometres north of the city, whereas the 130 m (426 ft) high Gibralfaro rises up in the city centre: from the walls of the Castillo de Gibralfaro, you can see Malaga in all its beauty - with the old town dominated by the elegant towers of the cathedral, one of the most beautiful in the Mediterranean. Beneath the castle are the romantic gardens of the Moorish Alcazaba fortress, a great place to while away some time. Wine lovers will appreciate the fertile soils of the Vega, which produce wines like Pedro Ximenez. Malaga is a feast for all the senses.

Day 5 Marina Smir/Morocco, 08.00 - 18.00 hrs

Marina Smir, on the north coast of Morocco, is just a short distance away from the lively city of Tetouan. The elegant marina combines Moroccan hospitality with Mediterranean flair. The water glistening in the sun beckons you to the promenade, where you can browse exclusive boutiques or sample regional specialities in first-class restaurants. The coast and surrounding hills provide a charming setting for walks along the harbour, where sailing boats gently bob on the waves.

Day 6 Cadiz/Spain, 08.00 - 19.00 hrs

The white facades of Cadiz appear on the horizon, while the golden domes of the cathedral reflect the bright blue sky. The screeches of seagulls and the sound of the waves are carried on the wind. Cadiz, with its history dating back over 3,000 years, was once a lively trading centre. Today, the city retains its pride in its majestic palaces, the Miradores, which offer a breathtaking view over the endless sea. And as you approach the long sandy beach, you almost expect Halle Berry to emerge from the waves - as she did in the famous James Bond scene filmed here.

Day 7 Portimao/Portugal, 08.00 - 18.00 hrs

The copper-red cliffs along the Algarve coast, which rise up almost vertically from the deep-blue sea, make Portimao a real highlight. The charming old town and the marina are perfect for relaxed walks, while the Praia da Rocha - an endless, golden shimmering beach - invites you to enjoy soaking up some rays of sun. Numerous other bays, dune islands and crystal-clear water are perfect for quickly making you forget the everyday.

Day 8 Lisbon/Portugal, arrival 08.00 hrs

A unique blend of magnificent palaces, historic monasteries and picturesque narrow streets greets visitors to the Portuguese capital. Lisbon has a magical charm of times gone by and surprises in store at every corner. The medieval Castelo de Sao Jorge stands guard over the city, while the Alfama district with its narrow winding streets and staircases offers an authentic insight into the old Lisbon. Don't miss a trip on the famous Tram 28, which winds its way up and down the hills. Cafes, shops and street sellers make the city centre a lively place to be. With its many lifts and trams, the city's steep hills are easy to explore and its many sights can be reached on foot.

The Small Cruise Ship Collection

www.small-cruise-ships.com

01432 507 280 (within UK)

info@small-cruise-ships.com | small-cruise-ships.com



The Small Cruise
Ship Collection

www.small-cruise-ships.com

small-cruise-ships.com

info@small-cruise-ships.com

Day 9 Lisbon/Portugal, departure 13.00 hrs

Day 10 Leixoes (Porto)/Portugal, arrival 07.00 hrs

Please note:

* The shore activities are not included in the cruise price and are in the planning stage. Subject to change.

The Small Cruise Ship Collection

www.small-cruise-ships.com

small-cruise-ships.com

info@small-cruise-ships.com

YOUR SHIP: EUROPA

YOUR SHIP: Europa

VESSEL TYPE:

LENGTH:

PASSENGER CAPACITY:

BUILT/REFURBISHED:

Extensive space for a maximum of 400 guests A crew-to-guest ratio of almost one to one Outside suites only, most with a veranda Five restaurants for the ultimate in culinary indulgence - including THE GLOBE by three-star chef Kevin Fehling Top-class entertainment: experience international artists and experts live on board EUROPA Refresh: new fitness and wellness concepts for even more well-being MS EUROPA is an award-winning luxury cruise ship renowned for setting global standards in refined small-ship cruising. Accommodating a maximum of just 400 guests, the ship offers an intimate and highly personalised experience, supported by an almost one-to-one crew-to-guest ratio. Designed around the concept of casual luxury, EUROPA combines spacious surroundings, attentive service, and elegant all-suite accommodation, with all suites featuring ocean views and most offering private verandas. Onboard, guests can enjoy five exceptional restaurants, including fine dining concepts created in collaboration with acclaimed chefs, alongside world-class entertainment, wellness facilities, and thoughtfully curated enrichment experiences. The ship's smaller size allows access to unique itineraries and exclusive ports beyond the reach of larger vessels, while recent EUROPA Refresh

enhancements have introduced updated fitness and wellness concepts for an even more elevated onboard experience. Blending sophistication, comfort, and flexibility, MS EUROPA delivers a truly premium voyage to destinations



worldwide.

The Small Cruise Ship Collection

www.small-cruise-ships.com

01432 507 280 (within UK)

info@small-cruise-ships.com | small-cruise-ships.com

The Small Cruise Ship Collection

www.small-cruise-ships.com

small-cruise-ships.com

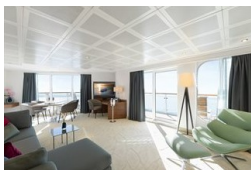
info@small-cruise-ships.com

INSIDE YOUR SHIP

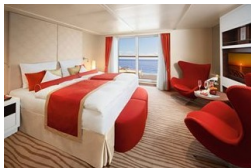
Penthouse Deluxe Suite



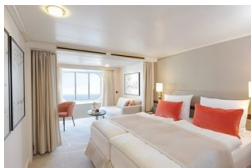
Penthouse Grand Suite



SPA Suite



Suite with panorama window



Veranda Suite Cat. 4-5

Veranda Suite Cat. 6-7



The Small Cruise Ship Collection

www.small-cruise-ships.com

small-cruise-ships.com

info@small-cruise-ships.com

PRICING

20-Jul-2028 to 27-Jul-2028

Suite with panorama window	£3735 GBP pp
Veranda Suite Cat. 4-5	£5195 GBP pp
Veranda Suite Cat. 6-7	£6735 GBP pp
SPA Suite	£7285 GBP pp
Penthouse Deluxe Suite	£11589 GBP pp
Penthouse Grand Suite	£18375 GBP pp