

## The Small Cruise Ship Collection

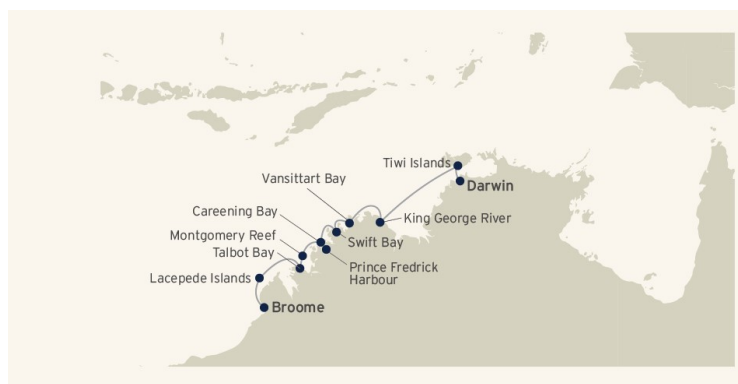
[www.small-cruise-ships.com](http://www.small-cruise-ships.com)

[small-cruise-ships.com](http://small-cruise-ships.com)

[info@small-cruise-ships.com](mailto:info@small-cruise-ships.com)

## ART & CULTURE OF THE KIMBERLEY & TIWI ISLANDS

Join us aboard Coral Discoverer on our new special culture-themed expeditions as we set sail across the Joseph Bonaparte Gulf to discover the rich modern community of the Tiwi Islands and the ancient rock art of the eastern Kimberley. With fewer than 70 guests, this 10-night journey will connect you with the vibrant modern culture of the Tiwi Islands and take in the vast Kimberley coast and its ancient rock art galleries dating back over 40,000 years. Visit a local co-operative gallery at Munupi Arts Centre where guests can purchase art at the source, participate in workshops and view cultural performances. Discover natural cave galleries and rock formations to reveal Wandjina and Gwion Gwion figures. Travel deep into the King George and Berkeley River systems to witness a landscape carved by the powerful forces of tides and monsoon rains. Experience the majestic landscape and powerful natural forces of the Kimberley, on shore excursions to the King George Falls and the tidal phenomena of the Horizontal Waterfalls and Montgomery Reef.



### ITINERARY

#### DEPART DARWIN

Darwin Departures: Arrive at 7:00am for SailSAFE check-in. Board your Coral Expeditions ship in Darwin at 8:00am where there is time to settle into your cabin before our 9:00am departure. Broome Departures: Arrive at 3:00pm for SailSAFE check-in. Board your Coral Expeditions ship in Broome at 4:00pm where there is time to settle into your cabin before our 5:00pm departure. Take the time to become acquainted with all the facilities onboard and join our Expedition Team in the Lounge for an insightful introduction to the Kimberley. As dusk falls meet your fellow travellers, the Captain and crew for the Captain's Welcome Drinks.

#### TIWI ISLANDS

Experience a traditional welcome ceremony and morning tea (damper and billy tea). On a guided tour, learn of the culture and history of the Tiwis as we explore the museum and the old mission precinct. Visit Tiwi Design, one of the oldest and most



## The Small Cruise Ship Collection

[www.small-cruise-ships.com](http://www.small-cruise-ships.com)

[small-cruise-ships.com](http://small-cruise-ships.com)

[info@small-cruise-ships.com](mailto:info@small-cruise-ships.com)

artistically diverse art centres in Australia and produces ochre paintings on canvas and bark, ironwood carvings, screen printed fabrics, ceramics, bronze/glass sculptures and limited edition prints. Under the guidance of a local artist, enjoy an afternoon art session to create your own artwork to take home. On Melville Island, learn about both traditional and contemporary art on a visit to wholly Indigenous owned Munupi Arts at Pirlangimpi. We will have the opportunity to purchase traditional Tiwi artworks including paintings, fabrics, carving, pottery and clothing at island prices.

### KING GEORGE RIVER & FALLS (OOMARI FALLS)

Fed by the King George River draining across the Gardner Plateau, 80m tall King George Falls are the most impressive Kimberley waterfalls and the highest twin falls in Western Australia. Before reaching the mist-like spray rising from the base of King George Falls, we cruise through steep-sided gorges carved by a flooded river system that carved a swathe through the Kimberley landscape 400 million years ago. Early in the waterfall season, we may cruise around the base of impressive King George Falls while in later months we take the opportunity to view the honeycomb erosion patterns of sandstone cliffs up close.

### VANSITTART BAY (BANJAL)

Vansittart Bay is home to many cultural and historically significant sites like the remarkable Gwion Gwion (Bradshaw) Aboriginal rock art galleries estimated to be up to 20,000 years old. Jar Island is so-named after the pot shards found here, brought to the island by Macassan fisherman harvesting sea cucumbers (also known as trepang). Nearby, on the Anjo Peninsula lays the well-preserved wreckage of a US Airforce C-53 Skytrooper aircraft, the result of a pilot losing his bearings

flying from Perth to Broome in 1942 and putting down on a salt pan near present-day Truscott Airbase.

### MITCHELL FALLS, WINYALKAN, & SWIFT BAY

Tumbling down the Mitchell Plateau in a series of tiered waterfalls and emerald green rock pools, the Mitchell Falls are the photogenic poster child for the Mitchell River National Park. Take a scenic helicopter flight (additional cost) to multi-tiered Mitchell Falls where emerald-hued rock pools cascade down the escarpment and ancient rock art galleries are concealed in caves behind curtains of water. Mitchell River National Park is inhabited by significant numbers of mammals, amphibians, reptiles and bird species which are lured by a year-round water source. Sandstone terraces beside tiered rock pools make a terrific viewing platform from which to savor the serenity of this ancient landscape. An alternative option to Mitchell Falls is exploring the sandstone caves of Wollaston Bay or Wollaston Creek. This mass of weathered tunnels, arches and columns form a labyrinth-like maze and was once an Aboriginal midden. Another option while anchored at Winyalkan Bay is a visit to a series Wandjina and Gwion Gwion rock art galleries at Swift Bay. In the evening we will enjoy watching the sunset over the Indian Ocean while indulging in a gourmet BBQ.

### PRINCE FREDERICK HARBOUR AND BIGGE ISLAND (WUUYURU)

Prince Frederick Harbour is one of the Kimberley's most spectacular locations at the southern end of York Sound. The harbour is dotted with islands lined with mangroves and monsoon rainforests, set against a backdrop of ochre-hued escarpment. White-bellied sea eagles and other birds of prey are often seen here, and at low tide, expansive mudflats reveal large populations of mudskippers and mangrove crabs. We will take our Xplorer tender vessels on a cruise up Porosus Creek to





## The Small Cruise Ship Collection

[www.small-cruise-ships.com](http://www.small-cruise-ships.com)

[small-cruise-ships.com](http://small-cruise-ships.com)

[info@small-cruise-ships.com](mailto:info@small-cruise-ships.com)

view some striking rock formations. Bigge Island's Indigenous name is Wuuyuru, and the Indigenous Group of the area is the Wunambal people.

### PRINCE REGENT RIVER AND CAREENING BAY (WUNBUNG-GU)

King Cascade is a classically beautiful terraced waterfall and is one of the most photographed waterfalls in the Kimberley. Falling from a considerable height and around 50m across, water tumbles down a staggered terrace of Kimberley sandstone. Layer upon layer of ochre-hued and blackened rock sprouts grasses, mosses and ferns in a sort of lushly vegetated hanging garden. We reach King Cascade after cruising in our Xplorer tender vessels down the steep-sided Prince Regent River which is a remarkable anomaly as the river runs dead straight along a fault line. Lt. Phillip Parker King named nearby Careening Bay after he beached his leaking vessel HMC Mermaid to effect repairs. While stranded on this remote coastline for 17 days the ship's carpenter carved HMC Mermaid 1820 into the bottle-shaped trunk of a boab tree near the beach. 200 years later, the Mermaid Boab Tree has since split into two trunks and sports a mammoth girth of 12m. Significantly, the bulbous tree is listed on the National Register of Big Trees and the carpenter's careful inscription now stands almost as tall as a person.

### MONTGOMERY REEF (YOWJAB)

Montgomery Reef is a biologically diverse area covering over 300 sq km and was named by Phillip Parker King. Twice daily, as the sea recedes in mammoth 11m tides, Montgomery Reef rises from the Indian Ocean in a cascade of rushing water revealing a flat-topped reef pockmarked with rock pools and rivulets. As the reef emerges, we get up close in our Xplorer and Zodiac inflatable tenders to witness the spectacle as our

Expedition Team share their knowledge on the formation of the reef and the myriad wildlife. Opportunistic birds take advantage of the emerging reef, feeding on marine life left exposed in rock pools. Turtles, dolphins, dugongs and sawfish too are also attracted to feeding opportunities as the ocean recedes. The ocean is awash in a swirl of eddies and whirlpools as the moon's gravitational force takes hold. Then, a few hours later the entire water-borne drama is reversed as the tide comes in and Montgomery Reef disappears below sea level.

### HORIZONTAL FALLS (GARAANNGADDIM) AND BUCCANEER ARCHIPELAGO

The Horizontal Falls are one of the Kimberley's biggest attractions and are a result of the mammoth 11m tides the Kimberley is renowned for. Naturalist David Attenborough described the Horizontal Falls as 'one of the greatest natural wonders of the world.' This natural phenomenon has been created as the ocean thunders through a narrow gorge in the McLarty Ranges. Water builds up on one side and is forcibly pushed through the bottleneck, creating a rushing horizontal waterfall of swiftly flowing seawater. Riding the rapids on our Zodiac inflatable tenders is one of the highlights of our Kimberley expedition cruises. Talbot Bay is at the heart of the Buccaneer Archipelago, where rocks on the 800 or so islands are estimated at over 2 billion years old. At Cyclone Creek, you will see evidence of massive geological forces in the impressive rock formations and cruise through the Iron Islands, past Koolan Island, before enjoying sunset drinks at Nares Point.

### THE LACEPEDE ISLANDS

The Lacepede Islands are a protected class-A nature reserve and are significant as a seabird nesting rookery for brown boobies and roseate terns. Other species often sighted at the Lacepedes include Australian Pelicans, frigate birds, egrets and

The Small Cruise Ship Collection  
[www.small-cruise-ships.com](http://www.small-cruise-ships.com)

01432 507 280 (within UK)

[info@small-cruise-ships.com](mailto:info@small-cruise-ships.com) | [small-cruise-ships.com](http://small-cruise-ships.com)



gulls. The four low-lying islands are also an important breeding and nesting habitat for green turtles. If weather and tide conditions are suitable, we will explore the lagoons by Xplorer and Zodiac tender vessels. As our incredible Kimberley adventures draw to a close, on our last evening aboard we enjoy the Captain's farewell drinks amongst new-found friends.

#### ARRIVE BROOME

Our incredible adventure along the Kimberley Coast concludes. Bid farewell to new-found friends, the Captain and crew. A post-cruise transfer to Broome CBD or Airport is included. Broome Arrival: Arrive in Broome this morning at 8:00am. A post-cruise transfer to Broome CBD or Airport is included. If you're not transferring directly to the airport why not spend the day visiting world-famous Cable Beach or stroll the historic streets of Chinatown in central Broome. Darwin Arrival: Arrive and disembark at Darwin's Fort Hill Wharf at 08:30am. Post cruise transfers to CBD hotels or the airport are included. If you're not transferring directly to the airport why not spend the day enjoying the tropical city of Darwin with its landscaped waterfront and harbourside Wave Pool.

#### Please Note:

This itinerary is an indication of the destinations we visit and activities on offer. Throughout the expedition we may make changes to the itinerary as necessary to maximise your expeditionary experience. Allowances may be made for seasonal variations, weather, tidal conditions, and any other event that may affect the operation of the vessel. Coral Expeditions suggests that you do not arrive on the day of embarkation or depart on the day of disembarkation due to any changes that may occur in scheduling.





## The Small Cruise Ship Collection

[www.small-cruise-ships.com](http://www.small-cruise-ships.com)

[small-cruise-ships.com](http://small-cruise-ships.com)

[info@small-cruise-ships.com](mailto:info@small-cruise-ships.com)

## YOUR SHIP: CORAL DISCOVERER

**YOUR SHIP:** Coral Discoverer

**VESSEL TYPE:**

**LENGTH:**

**PASSENGER CAPACITY:**

**BUILT/REFURBISHED:**

Yacht-like Coral Discoverer set a new benchmark standard of sophistication in expedition cruising when she was constructed by us in 2005. Coral Discoverer sailed on pioneering expeditions through Papua New Guinea, the islands of the South Pacific, Vanuatu, New Zealand, West Papua, and the Spice Islands. She led explorations into remote areas, focusing on destinations that were largely inaccessible to larger cruise ships. Coral Discoverer is exceptionally nimble and maneuverable, with a shallow draught to get up close to destinations, ocean views from all public spaces, an expansive open-air sun deck, all outside-facing staterooms, and state-of-the-art tools for exploration including the Xplorer, zodiacs, a glass-bottom boat, and kayaks. A full refurbishment in 2018 saw the addition of private balconies, the much-loved Xplorer sundeck bar, and all new furnishings throughout the ship. Comfortable, reliable, and intimately scaled, Coral Discoverer now conducts expeditions across Australia's coast - Tasmania, Cape York and Arnhem Land and the Kimberley. Australian flagged and staffed by an Australian and New Zealand crew, your experience aboard Coral Discoverer will be memorable. Onboard Accommodation Onboard accommodation comprises 36 spacious modern

staterooms. You can select from Bridge, Promenade or Main Deck staterooms offering a choice of twin through to junior king-size doubles. All staterooms have an ocean view, en-suite facilities, settee, large wardrobe, desk, luggage storage, individual air-conditioning control, and are serviced daily. Onboard Facilities What you would expect of a much larger cruise ship: Large sundeck Spa Pool Guest computer Comprehensive reference library Phone and fax facilities Lecture lounge with large plasma screen Limited laundry facilities Two fully stocked cocktail bars Boutique and dive shop Air-conditioned public areas Coral Discoverer is equipped with the latest technology active stabilizers and is fitted with state-of-the-art safety and navigational equipment and is the only Australian passenger ship registered with full SOLAS compliance allowing opportunities to explore a multitude of international voyages. Dining All meals during the cruise are included. Breakfast and lunch are served in the Dining Room located on the Main Deck and are buffet-style while dinner is table d'hote. Coffee and tea is available 24 hours. Standard hours are breakfast from 7:00-8:30am, lunch at 12:30pm and dinner at 7:30pm however meal times may vary according to the day's activities. Meal times will be advised in the onboard daily bulletins. Excursion Boats And Zodiacs The "Xplorer" is a specially designed aluminium excursion vessel used for the majority of our excursions. This vessel has high horsepower engines and will accommodate all passengers at one time. The "Xplorer" will be used for landings and for extensive exploration of rivers and tributaries. For your added convenience and comfort, the "Xplorer" is equipped with an awning and toilet. We



# The Small Cruise Ship Collection

[www.small-cruise-ships.com](http://www.small-cruise-ships.com)



[small-cruise-ships.com](http://small-cruise-ships.com)

[info@small-cruise-ships.com](mailto:info@small-cruise-ships.com)

also carry two inflatable landing craft (Zodiacs). Designed for expedition work, these large and heavy-duty inflatables are extremely safe. Separate air compartments retain a large reserve of buoyancy even if the boats damaged. The flat bottom design permits these crafts to land directly onto the beaches. Expect nonetheless to wade through shallow water to reach the shore. See photo



below (right)



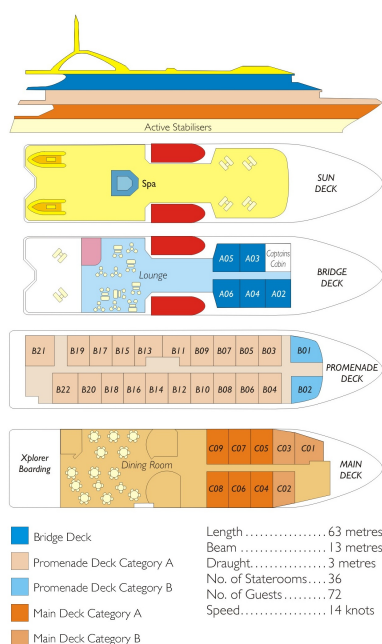
# The Small Cruise Ship Collection

www.small-cruise-ships.com

small-cruise-ships.com

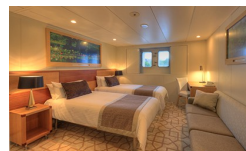
info@small-cruise-ships.com

## INSIDE YOUR SHIP



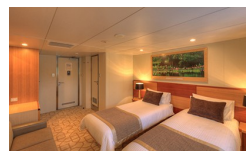
Bridge Deck Balcony

Main Deck A



Main Deck B

Promenade A



Promenade B





 The Small Cruise  
Ship Collection

[www.small-cruise-ships.com](http://www.small-cruise-ships.com)

[small-cruise-ships.com](http://small-cruise-ships.com)

[info@small-cruise-ships.com](mailto:info@small-cruise-ships.com)

small-cruise-ships.com

info@small-cruise-ships.com

## PRICING

Promenade B	£7150 GBP pp
Promenade A	£8200 GBP pp
Main Deck B	£6495 GBP pp
Main Deck A	£6850 GBP pp
Bridge Deck Balcony	£10200 GBP pp



[www.small-cruise-ships.com](http://www.small-cruise-ships.com)

**01432 507 280** (within UK)

info@small-cruise-ships.com | **small-cruise-ships.com**