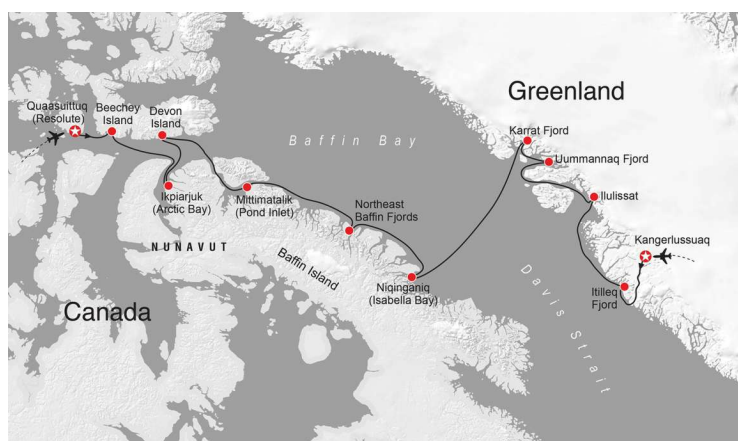




## ARCTIC EXPLORER (OCEAN ENDEAVOUR)

Arctic Explorer begins in the land of the midnight sun, in the place with no dawn. After departing Qausuittuq (Resolute), we'll visit the final resting place of three members of the ill-fated Franklin Expedition at Beechey Island and search for polar bears and walrus in far north Baffin Island. In Ikpiarjuk (Arctic Bay) we will visit a vibrant, traditional community surrounded by towering cliffs and nesting habitats for seabirds, narwhals, and bowhead whales. At Mittimatalik (Pond Inlet), our hosts will welcome us with throat-singing and Inuit games, before we explore Baffin's mighty fjords. We'll seek bowhead whales in Niqinganiq (Isabella Bay), the world's first Inuit-initiated whale sanctuary. Crossing Davis Strait, we'll encounter Greenland's stirring icescape. There, we'll marvel at Uummannaq's heart-shaped mountain, zip among the freshly calved bergs off Ilulissat in our Zodiacs, and hike around Itilleq Fjord. Spectacular Sondre Stromfjord makes a glorious finale to our trip. Join us as we explore the far northern reaches of Nunavut and Greenland on our most culturally-focused itinerary. See what has been wrought without the hand of man, and learn about the lives carved out in some of the world's most inhospitable yet beautiful places.



### ITINERARY

#### Day 1: Qausuittuq (Resolute), NU

Resolute Bay is also known as Qausuittuq "place with no dawn." Resolute Bay is truly the land of the midnight sun as the sun shines twenty-four hours a day from about April 29 to August 13 each year. From archaeological excavations, it has been concluded that there have been at least three stages of occupation at Resolute Bay. The Dorset culture was the first, followed by an early phase of the Thule culture, in which the artefacts found show strong Alaskan affinities. These were probably both short periods of occupation, possibly by only a few families. A late or developed phase of the Thule culture was of longer duration, with a considerably larger population. Resolute Bay was named after HMS Resolute, one of the ships in the Franklin search expedition commanded by Captain H.T. Austin. An airfield was established at Resolute Bay in 1947 during construction of a joint US-Canadian weather station. In 1953, Inuit from Inukjuak, Quebec and Mittimatalik (Pond Inlet)



were relocated to Resolute by the Canadian government.

#### Day 2: Beechey Island

In 1845 Sir John Franklin took his expedition of 129 men in two ships into the Wellington Channel. Not a soul returned from the fateful expedition. It was two years before search parties were launched. Aside from the bodies of three souls buried here, only relics were found as clues to the disappearance. The three graves found at Beechey island left no indication as to the fate of the rest of the British party until recently. In the autumn of 2014, Canadian archaeologists discovered remnants of the HMS Erebus in the frozen waters of the Northwest Passage, a discovery that has re-galvanized interest in the fabled region.

#### Day 3: Ikpiarjuk (Arctic Bay)

Ikpiarjuk, on the northern part of the Borden Peninsula on Baffin Island, has been occupied in some capacity for over 5,000 years. The bay itself is surrounded by high hills on all sides; the Inuktitut name translates to the pocket and reflects this. To the southeast, the flat-topped King George V Mountain dominates the skyline. Arctic Bay is home to the annual Midnight Sun Marathon, one of the northernmost athletic contests in the world.

#### Day 4: Croker Bay

This morning we'll take the Zodiacs out in Croker Bay. John Ross, who explored the bay in 1818, named it for John Croker, who was then the First Secretary of the Admiralty position he held for more than twenty consecutive years. Ross was re-examining the observations that William Baffin had made two hundred years before. Upon reaching what is now known as Croker Bay, Ross went no further, for he was misled by a mirage that appeared to show mountains at the end of the

strait. He named the apparent mountains "Crocker Hills". The mountains Ross saw proved to be nonexistent perhaps an Arctic optical illusion. We hope to get close to one of the glaciers that empty into the bay and, as ever, you should keep your eyes open for wildlife.

#### Day 5: Mittimatalik (Pond Inlet)

Mittimatalik (Pond Inlet) is a bustling Arctic community surrounded by one of the most beautiful landscapes in the eastern Arctic. We will have a chance to explore the town, including its excellent library and other facilities, and meet many local citizens who will gladly share their culture. We will be treated to a cultural presentation at the Community Hall and crafts may be available here. Mittimatalik is a famous region for viewing marine mammals, including the elusive narwhal.

#### Day 6: North East Baffin

Today will be an expedition day in the truest sense as we navigate the multitudinous fjords of northeast Baffin Island. Baffin's fjords are striking, their extreme depth and narrow width affording stunning perspectives on geological processes. The Ocean Endeavour is the perfect vessel for exploring these hidden treasures of the north, as her manoeuvrability allows her to access regions that would be impassable to larger vessels. We will be on alert for changing weather and ice conditions and use our judgement as to which route along the coast will be the most spectacular. As ever, our elite team will be on deck for the duration, searching for wildlife and contextualizing the mighty landscape through which we travel.

#### Day 7: Niginiganiq (Isabella Bay)

Niginiganiq is a 336,000-hectare marine region on Baffin Island that is a crucial feeding area for threatened bowhead whale.





This is also the world's first Inuit-initiated and maintained marine mammal sanctuary. The area includes two deep offshore troughs rich in copepods, a main food source for the bowhead whale.

#### Day 8: Karrat Fjord

Today we will cruise one of Greenland's most spectacular fjords, known for plentiful marine life and inspiring landscapes. Seals use the long leads created by high winds in this region to hunt the rich waters of the fjord. The cliffs within the fjord should give us good opportunities to see colonies of dovekies. Time spent on deck today should result in some good wildlife sightings, not to mention unbeatable photographic opportunities of the majestic rock faces.

#### Day 9: Uummannaq

Uummannaq Fjord in northwest Greenland is the country's second-largest system of fjords. It empties into Baffin Bay and is characterized by its developed coastline and various bays, islands, and peninsulas. It is considered to be the sunniest spot in Greenland, and favourable weather coupled with proximity to coastal travel routes have made the fjord system a popular destination for Greenlandic Inuit. It has been settled and re-settled continually for the last 4,500 years. Archaeological excavations at Qilakitsoq, due south of Uummannaq Island, revealed the existence of the ancient Saqqaq culture. Recent evidence indicates that these groups settled Greenland between 2500 BC and 800 BC, and further, that they migrated from Siberia to arrive in Uummannaq. It is thought that this migration gave rise to both modern Native Americans and the Inuit. Our time in Uummannaq will be spent cruising and exploring; our expert resource staff will be on deck to help spot wildlife and contextualize the dramatic scenery surrounding the Ocean

Endeavour.

#### Day 10: Ilulissat, Greenland

Venturing 250 kilometres north of the Arctic Circle we find the stunning coastal community of Ilulissat. Ilulissat translates literally into "iceberg", and there couldn't be a more fitting name. Our visit will include time in the colourful town and a chance to hike out to an elevated viewpoint where we can observe the great fields of ice. We will also cruise in our fleet of Zodiacs in the UNESCO World Heritage Site of the Ilulissat Ice fjord. The Ice fjord is where we find the Sermeq Kujalleq Glacier, one of the most active and fastest moving in the world at nineteen metres per day and calving more than thirty-five square kilometers of ice annually.

#### Day 11: Itilleq

The west Greenland coastline is a rich mixture of fishing communities, tiny islands and complex coastal waterways. We will be making an expedition stop here to explore the Greenlandic landscape. The community at Itilleq is always excited at our arrival and we have a long-standing tradition of a little friendly sporting competition with the locals. Today may be a chance for you to stretch your legs and challenge our friends at Itilleq to cheer on the Adventure Canada squad (who may well need all the help they can get!).

#### Day 12: Kangerlussuaq, Greenland

We will make our journey down spectacular Søndre Strømfjord, and early risers will have a chance to experience its beauty. Søndre Strømfjord is one of the longest fjords in the world and boasts 168 kilometres of superb scenery! Kangerlussuaq, the town at its eastern mouth, means 'the big fjord.' Although the fjord crosses the Arctic Circle, like the oceans here, it does not



freeze. Locals can thank ocean currents for this, making this part of Greenland a centre for whaling and fishing all year. The United States built an air base at Kangerlussuaq in WWII due to the relatively mild weather and strategic proximity to Europe. Although the military base closed in 1992, the strip is now Greenland's main international and domestic airport. The area is distinguished by fantastic nature and rich biodiversity. There is nowhere else in Greenland where it is so easy to go so far into the interior and the worlds largest ice cap can be reached in less than an hour. The landscape features enormous glacier formations, which have ploughed deep into the dramatic tundra. On the plain between the fjord and the inland ice you may find Greenland's biggest herds of musk ox, reindeer, arctic foxes as well as the highest concentration of peregrine falcons in Greenland and more than 250 species of plants.

**Please Note:**

The itineraries/programs described are subject to change at the discretion of the ships master.





## YOUR SHIP: OCEAN ENDEAVOUR

**YOUR SHIP:** Ocean Endeavour

**VESSEL TYPE:**

**LENGTH:**

**PASSENGER CAPACITY:**

**BUILT/REFURBISHED:**

Sailing with a maximum of 198-passengers, Ocean Endeavour is the perfect vessel for expedition cruising. Outfitted with twenty Zodiacs, advanced navigation equipment, multiple lounges and a top deck observation room, she is purpose-built for passenger experiences in remote environments. The Ocean Endeavour boasts a 1B ice class, enabling her to freely explore throughout the Arctic summer. Launched in 1982, she has had numerous upgrades, most recently in 2010 and 2014. At 137 meters (450ft) in length, Ocean Endeavour has plenty of interior and exterior space. Enjoy multiple decks offering comfortable lounge chairs, outdoor dining, a swimming pool, sauna and even a hot tub! The spacious interiors allow for multiple workshops and presentations to occur simultaneously. Community is at the heart of Adventure Canada's expedition experience. We gather together to learn, enjoy a drink, sing a song or share a yarn - connecting with one and other. The three lounges aboard Ocean Endeavour are fantastic public spaces for seminars, events and dialogue. The Ocean Endeavour's private spaces are stylish and comfortable. All cabins have private washroom facilities, a phone for internal calls, radio, TV and air-conditioning. There are a variety of cabin categories available ranging from 9-30 m2

(100-320 sq ft). Ocean Endeavour's crew is experienced, and friendly. Her shallow draft and maneuverability allow her to access isolated fiords, bays and secluded communities. The stylish vessel is at home among the glorious settings we seek. Enjoy the class and comfort of a boutique hotel, while venturing to some of the world's last great frontiers aboard the Ocean



Endeavour!



# The Small Cruise Ship Collection

[www.small-cruise-ships.com](http://www.small-cruise-ships.com)



[small-cruise-ships.com](http://small-cruise-ships.com)

[info@small-cruise-ships.com](mailto:info@small-cruise-ships.com)

## INSIDE YOUR SHIP

### CABIN CATEGORIES

#### CATEGORY 10 | SUITE

**Deck seven** forward-facing picture windows, unobstructed view; matrimonial bed, private bath with full tub, refrigerator — approx. 370 sq. ft.

#### CATEGORY 9 | JUNIOR SUITE

**Deck five** (picture windows, unobstructed view; matrimonial bed, sitting area — approx. 270 sq. ft.), **deck seven forward** (forward-facing picture windows, unobstructed; matrimonial bed, private bath with full tub, sitting area — approx. 290 sq. ft.) private bath, refrigerator

#### CATEGORY 8 | SUPERIOR TWIN

**Deck five** (two picture windows, unobstructed view; two lower berths, sitting area — approx. 270 sq. ft.), **deck seven forward** (forward-facing picture windows, unobstructed; matrimonial bed, private bath with full tub — approx. 180 sq. ft.), **deck seven midship** (picture windows, partial obstruction; matrimonial bed — approx. 190 sq. ft.) private bath, refrigerator

#### CATEGORY 7 | SELECT TWIN

**Deck five** (picture windows, unobstructed view, two lower berths OR matrimonial bed, approx. 190 sq. ft.) and **deck eight** (overlaid windows, partial obstruction; matrimonial bed — approx. 145 sq. ft.) private bath, refrigerator

#### CATEGORY 6 | COMFORT TWIN

**Deck four** (two porthole windows, unobstructed view; two lower berths OR matrimonial bed — approx. 175 sq. ft.), **deck seven** (picture window, partial obstruction; two lower berths — approx. 155 sq. ft.) and **deck eight** (picture windows, obstructed view; matrimonial bed — approx. 160 sq. ft.) private bath, refrigerator

#### CATEGORY 5 | MAIN TWIN

**Deck five** (picture window, unobstructed view; two lower berths, private bath — approx. 115 sq. ft.)

#### CATEGORY 4 | EXTERIOR TWIN

**Deck four** (porthole window, unobstructed view; two lower berths, private bath — approx. 100 sq. ft. (twin) / 90 sq. ft. (single))

#### CATEGORY 3 | INTERIOR TWIN

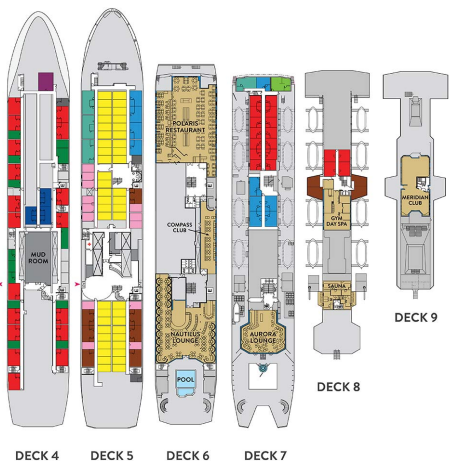
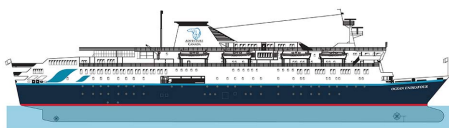
**Deck five** (interior cabin, two lower berths, private bath — approx. 125 sq. ft. (twin) / 110 sq. ft. (single))

#### CATEGORY 2 | TRIPLE

**Deck four** (interior cabin, three lower berths, two private baths — approx. 200 sq. ft.)

#### CATEGORY 1 | QUAD

**Deck four** (interior cabin, four lower berths, private bath (separate shower room and powder room) — approx. 240 sq. ft.)



The Small Cruise Ship Collection

[www.small-cruise-ships.com](http://www.small-cruise-ships.com)

01432 507 280 (within UK)

[info@small-cruise-ships.com](mailto:info@small-cruise-ships.com) | [small-cruise-ships.com](http://small-cruise-ships.com)



The Small Cruise  
Ship Collection

[www.small-cruise-ships.com](http://www.small-cruise-ships.com)

[small-cruise-ships.com](http://small-cruise-ships.com)

[info@small-cruise-ships.com](mailto:info@small-cruise-ships.com)

## PRICING

### ADDITIONAL CHARGES:

Discovery Fund Fee 250 USD pp



The Small Cruise  
Ship Collection

[www.small-cruise-ships.com](http://www.small-cruise-ships.com)

01432 507 280 (within UK)

[info@small-cruise-ships.com](mailto:info@small-cruise-ships.com) | [small-cruise-ships.com](http://small-cruise-ships.com)