



## The Small Cruise Ship Collection

[www.small-cruise-ships.com](http://www.small-cruise-ships.com)



[small-cruise-ships.com](http://small-cruise-ships.com)

[info@small-cruise-ships.com](mailto:info@small-cruise-ships.com)

## ARCTIC ATLANTIC JOURNEY

This short voyage embarks from the Arctic Isles towards the fjord landscapes of western Norway. You get the chance to dive into Norway's diverse landscapes and maritime heritage, passing through coastal towns and vibrant cities. Experience the contrast of serene islands and majestic fjords, enriched with cultural and natural wonders.



### ITINERARY

Day 1 Ports: Svolvær - Stamsund



The Small Cruise Ship Collection

[www.small-cruise-ships.com](http://www.small-cruise-ships.com)

01432 507 280 (within UK)

[info@small-cruise-ships.com](mailto:info@small-cruise-ships.com) | [small-cruise-ships.com](http://small-cruise-ships.com)



We've entered the wild and idyllic Lofoten Islands, known for their dramatic scenery, with peaks towering into the sky, traditional fishing villages nestled in sheltered bays, and the Northern Lights or the Midnight Sun illuminating the skies, depending on the season. It's a realm where nature and tradition intertwine, creating a unique and enchanting atmosphere.

Day 2 Ports: Bodø - Ørnes - Nesna - Sandnessjøen - Brønnøysund - Rørvik

Now we have come so far south that we're crossing the Arctic Circle and sailing away from the polar night and the sunlit nights. But you can still see the Northern Lights in the winter, and it is never completely dark during the summer nights. Here you sail past a myriad of small islands, islets and skerries and past the special mountain, Torghatten, which has a hole in the middle. If you wish, you can also go on the trip to the mountain and enter the hole.

Day 3 Ports: Trondheim - Kristiansund - Molde - Ålesund

We sail through the wide Trondheim fjord that is bounded by rolling farmland on both sides and return to the coast and the open sea. You can disembark in Kristiansund and be driven along the Atlantic Ocean Road, which has been called the world's most beautiful drive. The road meanders along islets and skerries, and afterwards you can re-embark in Molde.

Day 4 Ports: Torvik - Måløy - Florø - Bergen

The last day of the tour takes you through a diverse coastal landscape of bare rocky mountains and a maze of sounds and waterways between many islands. The great fjords and glaciers are situated inland. Bergen awaits at the end of the voyage. We hope you have many good memories from your journey along the Norwegian coast with Havila Voyages, and we look forward to seeing you again.

Please note:

Itineraries are subject to change.



## The Small Cruise Ship Collection

[www.small-cruise-ships.com](http://www.small-cruise-ships.com)



[small-cruise-ships.com](http://small-cruise-ships.com)

[info@small-cruise-ships.com](mailto:info@small-cruise-ships.com)

## YOUR SHIP: CASTOR, CAPELLA, POLARIS OR POLLUX

### YOUR SHIP:

**Castor, Capella, Polaris or Pollux**

### VESSEL TYPE:

### LENGTH:

### PASSENGER CAPACITY:

### BUILT/REFURBISHED:

The Newest, Most Eco-Friendly Ships on the Norwegian coastal route. Havila's coastal cruise ship will be home from home for a little while and you can relax and enjoy it. Cruise on the ships with decor that reflects Norwegian landscapes including the sea, the sky, mountains and glaciers. Natural materials and Nordic design creates a warm, genuine and unpretentious atmosphere, in which you are sure to feel at ease. You can enjoy the scenery gliding by outside from the ship's many public areas. Comfortable seats and panoramic windows give you the best possible views of the Norwegian coastline. Promenade deck and viewpoint If you want to feel the wind in your hair and inhale some good sea air, there's the outer deck and the viewpoint in the bow, or the promenade on Deck 8, that is long enough for a proper walk. Observation lounge The observation lounge on the top deck, Deck 9, has recliners under a glass roof, where you can look at the Northern Lights, the star-studded night sky or the midnight sun during the summer. The gym The machines in the gym are arranged in front of the window so that you can train and watch the passing landscape at the same time. Shopping Find unique clothes, books or local specialities in the shop on Deck 6, in the middle of the ship. Jacuzzi Enjoy the powerful jets

of hot water in the jacuzzi on the quarterdeck while looking out over the mountains and fjords. Sauna There is a sauna on the ships in the cloakroom area attached to the jacuzzis on Deck 8. Relax chairs Separate room with relax chairs for those who are not travelling far and do not need their own cabin. Cabins and suites Large cabins with Norwegian quality and design, where materials and colours reflect the landscape through which you will be sailing. Cafes and restaurants The ship has two restaurants and a cafe. The menus feature locally sourced food and the best that Norway has to offer. Facts about our Vessels The world's largest battery packs Four hours' sailing with zero emissions Energy-efficient hull design Locally sourced ingredients Heat recovery from the sea and cooling water Charging current from hydropower at the quay Liquid natural gas that cuts Co2 emissions by 25 % NOx emissions



reduced by 90%



The Small Cruise Ship Collection

[www.small-cruise-ships.com](http://www.small-cruise-ships.com)

**01432 507 280** (within UK)

[info@small-cruise-ships.com](mailto:info@small-cruise-ships.com) | [small-cruise-ships.com](http://small-cruise-ships.com)



# The Small Cruise Ship Collection

[www.small-cruise-ships.com](http://www.small-cruise-ships.com)



[small-cruise-ships.com](http://small-cruise-ships.com)

[info@small-cruise-ships.com](mailto:info@small-cruise-ships.com)

## INSIDE YOUR SHIP

### OUR NEW ECO-FRIENDLY SHIP

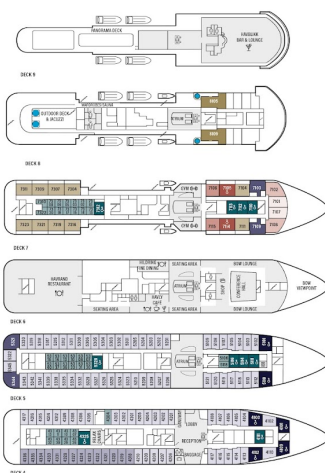
Enjoy silence, variation and comfort on board Havila Voyages. With our ships you can explore the world's most beautiful coast from the world's most eco-friendly vessels.

#### SHIP'S SPECIFICATIONS

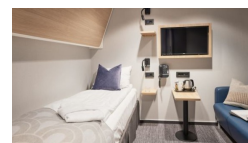
##### HAVILA CAPELLA & HAVILA CASTOR

TOTAL PASSENGERS ..... 140  
CAPACITY ..... 140 GUESTS  
Crew ..... 20  
Length ..... 22.0 m  
Width ..... 3.70 m  
Speed ..... 14.0 knots  
Range ..... 1000  
SHEEPS ..... 10000 TONNAGE (GROSS TONNAGE)

- PUBLIC SPACES
- WATER
- WATER ACCESSIBLE
- SILENCE SUPERIOR DOUBLE
- SILENCE SUPERIOR TWIN
- SILENCE DELUXE
- SILENCE SUPERIOR ACCESSIBLE
- SILENCE DELUXE
- SILENCE DELUXE ACCESSIBLE
- SILENCE SUITES
- SILENCE SUITES



Interior. From



The Small Cruise Ship Collection

[www.small-cruise-ships.com](http://www.small-cruise-ships.com)

01432 507 280 (within UK)

[info@small-cruise-ships.com](mailto:info@small-cruise-ships.com) | [small-cruise-ships.com](http://small-cruise-ships.com)



# The Small Cruise Ship Collection

[www.small-cruise-ships.com](http://www.small-cruise-ships.com)



[small-cruise-ships.com](http://small-cruise-ships.com)

[info@small-cruise-ships.com](mailto:info@small-cruise-ships.com)

## PRICING

### 10-Jan-2026 to 13-Jan-2026

Interior. From	£355 GBP pp
----------------	-------------

### 30-Jan-2026 to 02-Feb-2026

Interior. From	£365 GBP pp
----------------	-------------

### 15-Feb-2026 to 18-Feb-2026

Interior. From	£395 GBP pp
----------------	-------------

### 04-Mar-2026 to 07-Mar-2026

Interior. From	£415 GBP pp
----------------	-------------

### 28-Mar-2026 to 31-Mar-2026

Interior. From	£405 GBP pp
----------------	-------------

### 22-Apr-2026 to 25-Apr-2026

Interior. From	£365 GBP pp
----------------	-------------

### 09-May-2026 to 12-May-2026

Interior. From	£405 GBP pp
----------------	-------------

### 25-May-2026 to 28-May-2026

Interior. From	£435 GBP pp
----------------	-------------

### 13-Jun-2026 to 16-Jun-2026

Interior. From	£475 GBP pp
----------------	-------------

### 30-Jun-2026 to 03-Jul-2026

Interior. From	£495 GBP pp
----------------	-------------

### 19-Jul-2026 to 22-Jul-2026

Interior. From	£475 GBP pp
----------------	-------------

### 05-Aug-2026 to 08-Aug-2026

Interior. From	£475 GBP pp
----------------	-------------

### 18-Aug-2026 to 21-Aug-2026

Interior. From	£455 GBP pp
----------------	-------------



The Small Cruise Ship Collection

[www.small-cruise-ships.com](http://www.small-cruise-ships.com)

**01432 507 280** (within UK)

[info@small-cruise-ships.com](mailto:info@small-cruise-ships.com) | [small-cruise-ships.com](http://small-cruise-ships.com)