

The Small Cruise Ship Collection

www.small-cruise-ships.com

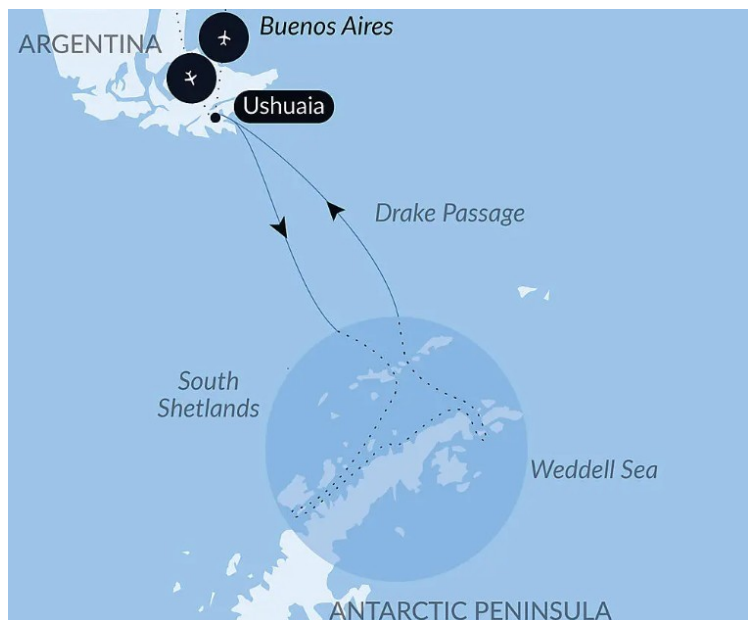
small-cruise-ships.com

info@small-cruise-ships.com

ANTARCTICA: OCEAN (RE)IMAGINED - WITH WOODS HOLE OCEANOGRAPHIC INSTITUTION

In alliance with Woods Hole Oceanographic Institution. _This Antarctica voyage is designed in collaboration with scientists from Woods Hole Oceanographic Institution (WHOI), the world's leading ocean science non-profit organization, as a living expression of its scientific work. PONANT and WHOI invite guests to experience the Southern Ocean--a dynamic system shaping global climate, circulation, and life on Earth--as researchers do. Science unfolds in real time through briefings, deck-based observation, and conversation shaped by conditions, curiosity, and discovery. This voyage is specially tailored for English-speaking travelers who want to engage with the world._ Antarctica is often described as remote, pristine, and untouched. But for ocean scientists, it is something else entirely. It is a driver of planetary systems --regulating climate, circulating heat, storing carbon, and sustaining life far beyond the polar regions. Embark on an unforgettable 11-day polar expedition voyage to the heart of the icy realm that is the Antarctic Peninsula and succumb to the enchantment of the breathtaking landscapes inhabited by astonishing wildlife. The start of your voyage will be marked by the crossing of the mythical Drake Passage , during which you will likely be escorted by several albatrosses and Cape petrels, the sentinels of these often-choppy waters. Your ship will then reach the White Continent , realm of the unexpected. This extreme environment where nature reigns supreme will reveal to you its most beautiful secrets through numerous discoveries. On this uninhabited land, which wasn't explored until the 19th century, your encounters with wildlife are sure to be one of the highlights of your experience. The Gentoo, Ad elie, and Chinstrap penguins,

Humpback whales, seals, and seabirds will provide you with cherished lifelong memories. Each day, whether on land, aboard your ship, or during a Zodiac outing, you will be surrounded by a grandiose landscape ranging from icebergs to ice floe and ancient glaciers. _We are privileged guests in these extreme lands where we are at the mercy of weather and ice conditions. Landings on certain sites and the observation of certain wildlife cannot be guaranteed. They vary from day to day, making each PONANT cruise a unique experience. The Captain and Expedition Leader will make every effort to ensure that your experience is as rich as possible, while complying with the safety rules and instructions imposed



by IAATO. _

The Small Cruise Ship Collection

www.small-cruise-ships.com

01432 507 280 (within UK)

info@small-cruise-ships.com | small-cruise-ships.com



The Small Cruise Ship Collection

www.small-cruise-ships.com

small-cruise-ships.com

info@small-cruise-ships.com

ITINERARY

Days 0 - 1 - Ushuaia

****The day before embarkation - Buenos Aires****

- * Transfer from Ezeiza International Airport in Buenos Aires, Argentina, to the Casa Lucia hotel (or similar).
- * Meet and greet at the hotel and hospitality desk. Check-in from late morning.
- * Lunch and dinner on your own and time at leisure in the afternoon.
- * Overnight at the hotel.

Capital of Argentina's ****Tierra del Fuego**** province, Ushuaia is considered the gateway to the White Continent and the South Pole. Nicknamed **"**El fin del mundo**"** by the Argentinian people, this city at the end of the world nestles in the shelter of mountains surrounded by fertile plains that the wildlife seem to have chosen as the ultimate sanctuary. With its exceptional site, where the Andes plunge straight into the sea, Ushuaia is one of the most fascinating places on earth, its very name evocative of journeys to the unlikely and the inaccessible...

Days 2 - 3 Crossing the Drake Passage

Use your days spent in the ****Drake Passage**** to familiarise yourself with your ship and deepen your knowledge of the Antarctic. The Expedition Leader will first present the IAATO rules of conduct that must be observed during landings in the region and will explain everything you need to know about the zodiac outings. Lectures about the history and wildlife of the Antarctic will be an opportunity for you to learn more about this magical

region, where every cruise is a ****unique experience****. You will experience exceptional sailing moments on board and join the naturalist-guides on your ship's exterior decks to look out for albatrosses, cape petrels, and other seabirds flying over the Drake Passage.

Days 4 - 8 Antarctic Peninsula

Succumb to the magic of a place unlike any other. To this day, the mythical ****Antarctic Peninsula**** still holds real fascination and promises its visitors unforgettable moments. Throughout your adventure in this icy realm, you will find yourself in the heart of a ****spectacular decor**** in subtle shades of blue and white, surrounded by ****exceptional wildlife****. Penguins, humpback whales, seals and giant petrels are at home here, as are elephant seals, fur seals, Antarctic minke whales, and orcas. Depending on which sites you will be lucky enough to visit, you may get the chance to observe them and share with them the beauty of these extreme parts.

Each day, based on ice conditions, the Captain and the Expedition Leader will suggest ****zodiac outings or landings**** to discover the infinite riches of the Antarctic Peninsula. Glaciers, ice floe, tabletop icebergs, mountain peaks that plunge straight into the sea, volcanic beaches, research stations, enchanting bays, and vestiges of the whaling industry: these are the faces of the Antarctic that will likely reveal themselves to you, in a hushed and surreal atmosphere. You will sail in the wake of Jean-Baptiste Charcot, Adrien de Gerlache and Sir Ernest Shackleton, great Antarctic explorers who, from the 19th century, set out to conquer these remote and uninhabited lands.

Days 9 - 10 Crossing the Drake Passage

The Small Cruise Ship Collection

www.small-cruise-ships.com

01432 507 280 (within UK)

info@small-cruise-ships.com | small-cruise-ships.com



The Small Cruise Ship Collection

www.small-cruise-ships.com

small-cruise-ships.com

info@small-cruise-ships.com

If there is one place, one sea, one waterway dreaded by tourists, researchers and hardened seafarers alike, it is undoubtedly **Drake Passage**. Situated at the latitude of the infamous Furious Fifties winds, between Cape Horn and the South Shetland Islands, it is **the shortest route to connect Antarctica to South America**. Seasoned navigators will tell you that you must earn your visit to the White Continent! As the Antarctic convergence zone where cold currents rising up from the South Pole meet warmer equatorial water masses, Drake Passage harbours a very diverse marine fauna. Don't forget to look to the sky to catch a glimpse of elegant albatross and **Cape petrels**, playfully floating about in the wind around your ship.

Day 11 - Ushuaia

Capital of Argentina's **Tierra del Fuego** province, Ushuaia is considered the gateway to the White Continent and the South Pole. Nicknamed **"El fin del mundo"** by the Argentinian people, this city at the end of the world nestles in the shelter of mountains surrounded by fertile plains that the wildlife seem to have chosen as the ultimate sanctuary. With its exceptional site, where the Andes plunge straight into the sea, Ushuaia is one of the most fascinating places on earth, its very name evocative of journeys to the unlikely and the inaccessible...

Please note:

Itineraries are subject to change.

 The Small Cruise
Ship Collection

www.small-cruise-ships.com

01432 507 280 (within UK)

info@small-cruise-ships.com | small-cruise-ships.com

The Small Cruise Ship Collection

www.small-cruise-ships.com

small-cruise-ships.com

info@small-cruise-ships.com

YOUR SHIP: LE LYRIAL

YOUR SHIP:

Le Lyrial

VESSEL TYPE:

LENGTH:

PASSENGER CAPACITY:

BUILT/REFURBISHED:

A sleek silhouette, a welcoming intimate atmosphere, discover aboard this new ship the philosophy that has made our sisterships such a success: the spirit of Yacht Cruises. Sailing under the French flag, this magnificent yacht of only 122 staterooms and Suites, with balconies, will join our fleet in April 2015. You will be enchanted by the contemporary decor inspired by the our destinations and the blue light of the Vega star in the Lyra constellation. The result is a subtle variation around a palette of blues, ranging from the luminous delicate grey-blue of the Polar ice to splashes of the vivid turquoise blue found in Mediterranean coves. A refined ambiance is enhanced by the quality of the workmanship and materials: white Corian counters in the lobby contrast with the warmth of leather to recall a boat's hull, while the central sculpture of enamelled pieces takes its inspiration from the sea. In the loungebar, the carpet picks up a tennis stripe theme symbolising a certain idea of cruising, one synonymous with French elegance and a chic seaside spirit. Please click the following links to read more about Ponant and the other Ponant cruise ships.



The Small Cruise Ship Collection
www.small-cruise-ships.com

01432 507 280 (within UK)

info@small-cruise-ships.com | small-cruise-ships.com



The Small Cruise Ship Collection

www.small-cruise-ships.com



small-cruise-ships.com

info@small-cruise-ships.com

PRICING

07-Dec-2027 to 17-Dec-2027

Superior Stateroom	£8895 GBP pp
Prestige Stateroom Deck 6	£10365 GBP pp
Grand Deluxe Suite	£20215 GBP pp
Owner's Suite	£29915 GBP pp
Prestige Suite	£15285 GBP pp
Grand Privilege Suite	£20805 GBP pp
Deluxe Stateroom	£9505 GBP pp
Prestige Stateroom Deck 4	£9935 GBP pp
Prestige Stateroom Deck 5	£10105 GBP pp
Privilege Suite	£16585 GBP pp
Deluxe Suite	£14685 GBP pp